



Discovering Our Planet Together



Wild Zambia

Walking Safaris, Game Drives & River Exploration in the Unspoiled Heart of Africa

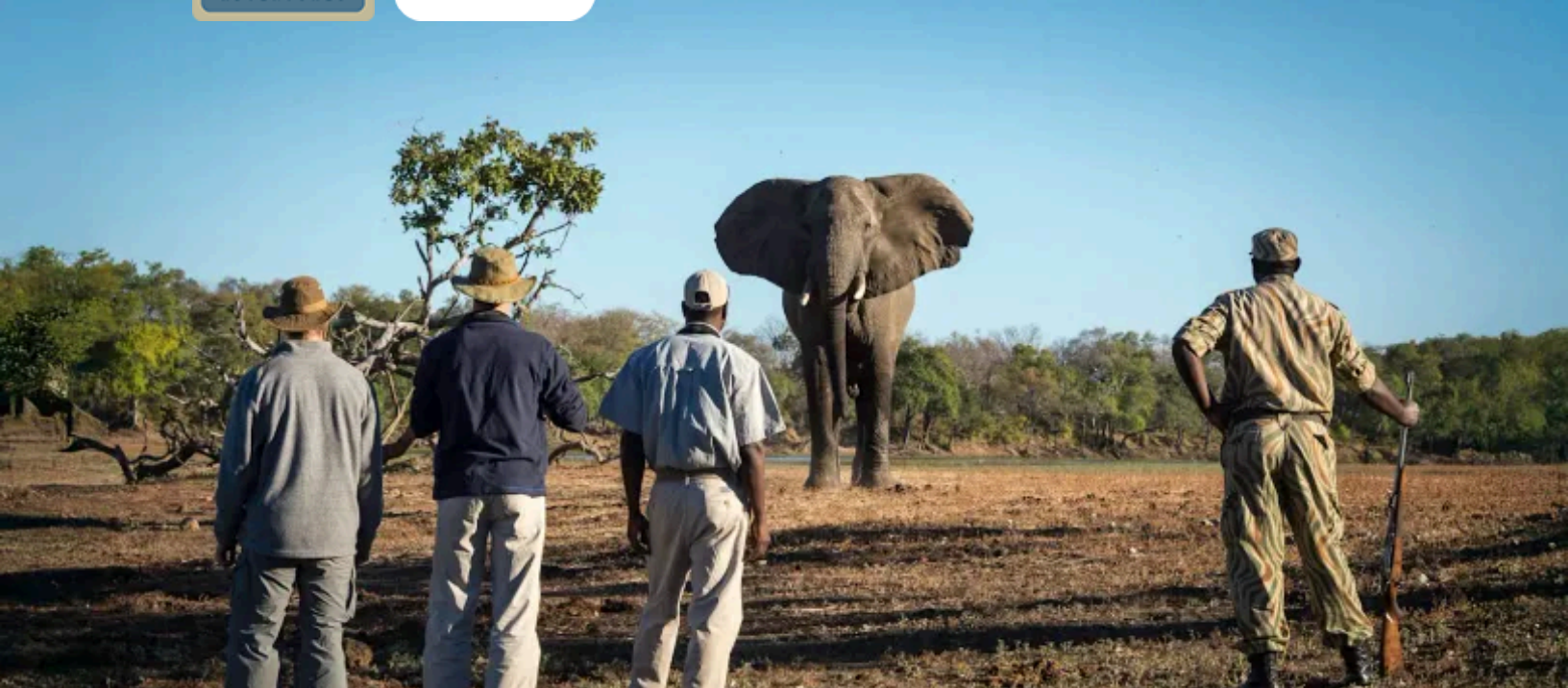


Table of Contents:

| | |
|--|-----------|
| Trip Overview | 3 |
| Trip Itinerary | 4 |
| Trip Accommodations | 8 |
| What Makes Nat Hab Different? | 10 |
| Make It Private | 11 |
| Dates & Pricing Information | 12 |



Discovering Our Planet Together



Trip Details:

Days
11 Days / Jun-
Oct

Price
From \$15995
(+Air)

**Physical
Requirements**
Moderate

Wild Zambia

Walking Safaris, Game Drives & River Exploration in the Unspoiled Heart of Africa

Few places in the world remain as wild as they were 150 years ago, but there are tracts of Africa that still feel primal. Southern Zambia is one of them. Vast, unmarred landscapes teem with great herds of game and stealthy predators, continuing the great dance of life as they have for millennia. When European explorers like David Livingstone ventured into terrain that was terra incognita to the outside world, they were stunned by the vibrancy of these ecosystems, with wildlife thriving in prolific numbers. That sense of awe is just as palpable in Zambia today, as we encounter nature's immensity on a scale rarely matched elsewhere. About 40% of the country is preserved in parks and game reserves, offering an unparalleled wilderness safari experience without the crowds. Come discover Zambia, land of untamed rivers, sprawling plains and abundant animals—where the essence of wild Africa still reigns.

Trip Highlights

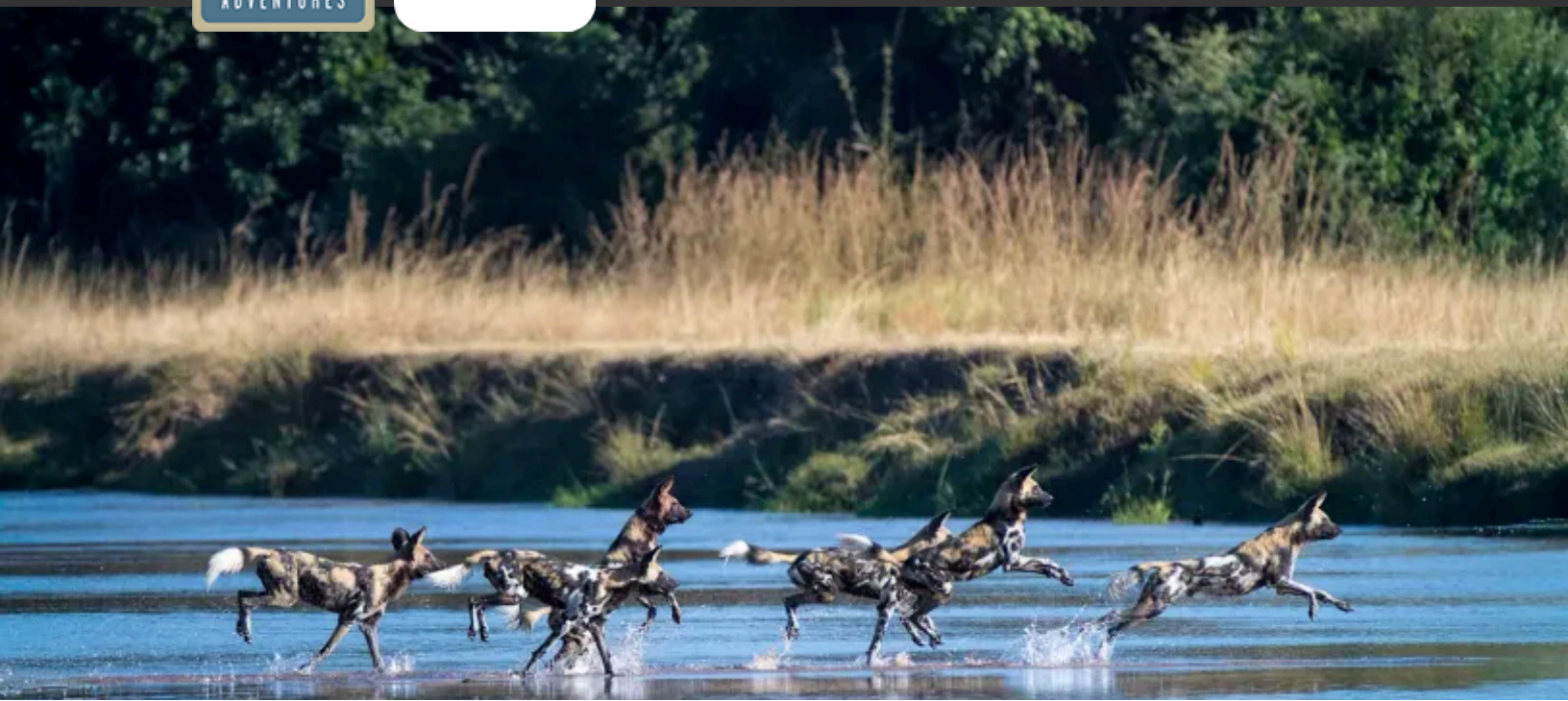
Discover Zambia, an under-the-radar safari destination, before others do—on a far-from-ordinary adventure into its most enticing wildlife reserves

Enjoy exclusive occupancy of small, secluded camps in premier wildlife habitat in South Luangwa and Lower Zambezi national parks

South Luangwa is where walking safaris were pioneered—join expert guides on foot, plus game drives, boat cruises and canoe safaris



Discovering Our Planet Together



Itinerary At A Glance

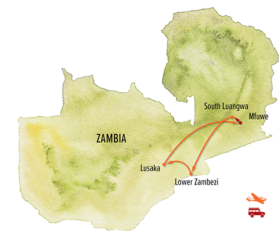
- Day 1**
Lusaka, Zambia
- Day 2**
Chartered Flight to Mfuwe / South Luangwa—Zungulila Camp
- Days 3 & 4**
On Safari in South Luangwa National Park
- Days 5 - 7**
South Luangwa—Bilimungwe Camp
- Day 8**
Private Chartered Flight to Lower Zambezi—Amanzi Camp
- Days 9 & 10**
Exploring Lower Zambezi National Park
- Day 11**
Chartered Flight to Lusaka / Depart

Wild Zambia Itinerary

Walking Safaris, Game Drives & River Exploration in the Unspoiled Heart of Africa

Day 1: Lusaka, Zambia

Arrive in Zambia's capital of Lusaka. Gather for a welcome dinner this evening with your Expedition Leader and fellow adventurers.





Day 2: Chartered Flight to Mfuwe / South Luangwa—Zungulila Camp

From Lusaka, take a chartered flight to Mfuwe, then transfer by road to Zungulila Camp on the Kapamba River, our base for exploring the little-visited southern sector of South Luangwa National Park. Our camp, exclusively for Nat Hab guests, is set on a knoll overlooking natural springs and broad plains that are home to prolific game. Four generous Meru-style tents accommodate just eight guests, their wood and thatch construction evoking the classic ambience of a bygone era while belying the luxury of this intimate camp that offers every comfort in this remote bush setting.

Days 3 & 4: On Safari in South Luangwa National Park

In South Luangwa, one of Africa's last tracts of primal wilderness, we are immersed in an evocative landscape of undulating hills, seasonal floodplains, ebony forests and rushing rivers. The Edenic vistas are a backdrop for tremendous concentrations of game, from massive elephants and Cape buffalo to agile antelope and the lions and leopards that prey upon them. Without even leaving camp, we're likely to see elephants wandering past and scores of buffalo gathered at the river to drink, not to mention regular camp denizens such as giraffe, monkeys and a wide assortment of birds.

The Luangwa Valley is the birthplace of the traditional walking safari, and to explore it on foot with an expert local guide, in the reassuring company of an armed guard, raises the sensory experience of the African wild to a level unmatched by any other mode. Optional walking safaris are a highlight at Zungulila, offering a rare encounter with raw nature at eye level. Learn to track a leopard by identifying its spoor, scout for tracks of antelope eluding predators, and observe crocodile footprints etched in the damp sand. Camp guides teach you to identify tell-tale animal alarm calls and show how to soothe insect bites with the juice of a sausage tree. Game drives take us farther afield in the comfort of a vehicle to look for hyenas on the hunt, prowling packs of African wild dogs and more. And night drives are a special experience, as we go in search of nocturnal predators including leopards.



Days 5 - 7: South Luangwa—Bilimungwe Camp

Transfer to Bilimungwe Camp for another angle on the vast wilderness of South Luangwa. Tucked within a mahogany grove overlooking three waterholes, Bilimungwe blends seamlessly with its wild setting, lying near both the Luangwa River and an open plain where lions and leopards stalk their prey. Plentiful wildlife is on your doorstep as you observe from the private raised deck of your reed and thatch cottage, entertained by giraffes bending low to drink and hippos splashing about. Large families of elephants are also frequent visitors to the waterholes. Other common sightings include zebra, impala, wildebeest, puku, warthog, baboons, spotted hyenas and wild dogs. Some 400 bird species thrive along the river, including saddle bill stork, marabou stork, great white egret, black headed heron and goliath heron.

Walking safaris are a highlight at Bilimungwa. Choose to explore the riverine woodland on foot with guides who are deeply familiar with this terrain, and count on plenty of game drives to maximize your wildlife viewing. In the evening, sundowners await on the riverbank, then retreat to a comfortable chair beneath the winterthorn tree and watch “Bush TV”: look to the orange horizon as animals emerge from their shaded hiding spots, once temperatures drop. On night drives, listen to the entrancing sounds of the African bush as we search for nocturnal predators. Once darkness descends, camp takes on a romantic ambience, when the flicker of paraffin lanterns illumines our retreat beneath a canopy of glittering stars.

Day 8: Private Chartered Flight to Lower Zambezi—Amanzi Camp

From Kapamba airstrip, we fly by private chartered aircraft to Lower Zambezi National Park and transfer to Amanzi Camp, elevated on a steep bank above the Zambezi’s Ngwenya Channel with panoramic views. We have exclusive occupancy of the intimate luxury camp, which has four tents on raised wooden decks overlooking the channel and a large island. The camp is perfectly positioned as a launch point for exploration, offering outstanding access to some of Zambia’s—and Africa’s—best wildlife viewing. The habitat around camp is a mix of miombo, mopane and acacia woodland interspersed with open plains and thick riverine forest—a diverse mosaic supporting a wide range of species.



Days 9 & 10: Exploring Lower Zambezi National Park

Covering 1,580 square miles, Lower Zambezi National Park is supreme wilderness, its silence broken only by the cry of the fish eagle and the bleats, calls, yips and roars of abundant wildlife. The park's lifeblood is the Zambezi River, coursing for 90 miles along its eastern edge, drawing spectacular numbers of animals. We go in search of it on varied land- and water-based activities—game drives and walking safaris, boat cruises on the river and canoe excursions on placid channels.

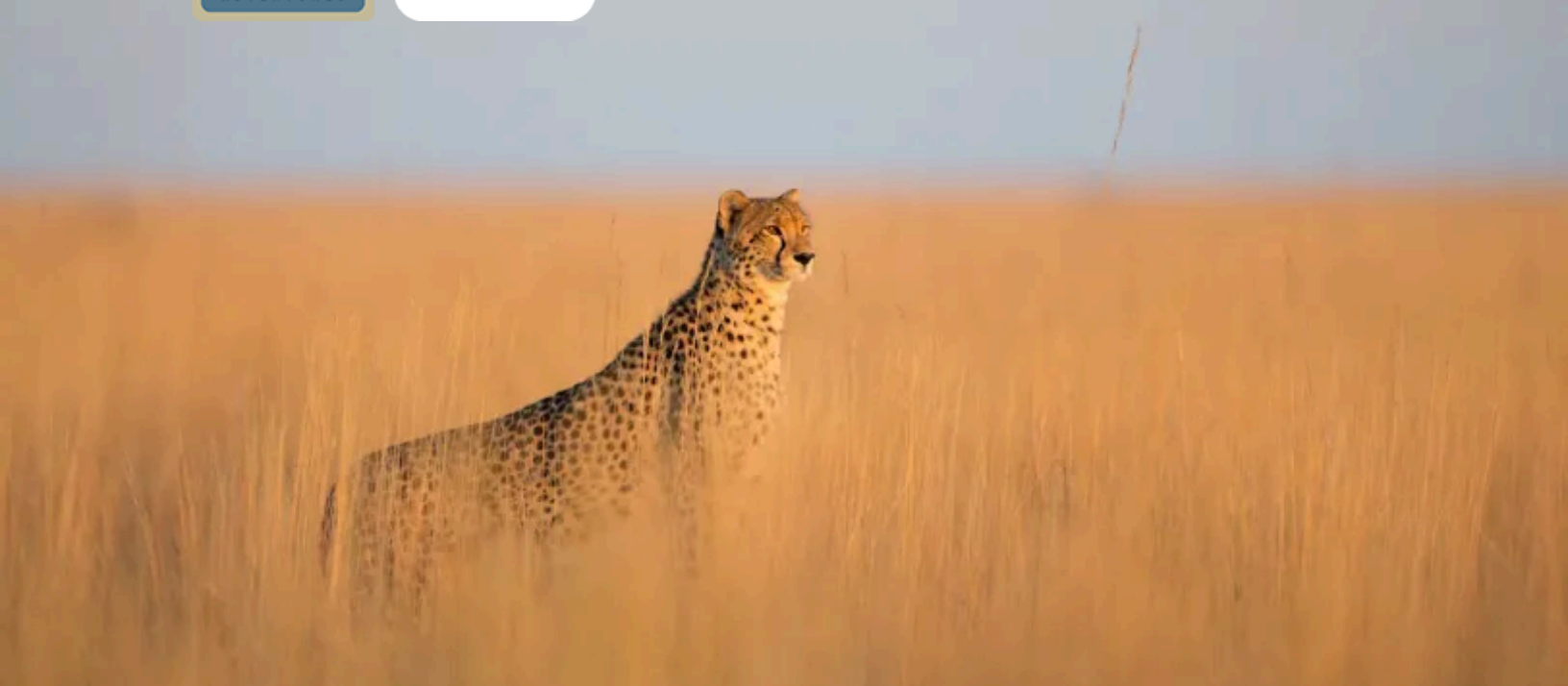
On the opposite bank of the mighty Zambezi is Mana Pools National Park in Zimbabwe, protecting an uninterrupted stretch of habitat for enormous herds of elephant and buffalo. Along the river, hippos are everywhere, snorting in noisy pods, while crocodiles bask in the shallows awaiting their next meal as animals wander down to quench their thirst. Kudu, eland, waterbuck, bushbuck, impala and zebra browse grasses on islands that lie between the two shores, creating an access corridor to both banks. Lion and leopard—the main predators—lie in wait, and our odds of seeing leopards, which thrive in this region, are especially high. Wild dog also roam the area, while spotted hyena and side-striped jackals are never far from the action. Night drives may reveal nocturnal species such as honey badger, porcupine, genet, civet, aardvark and possibly pangolin. The birdlife is magnificent, with both waterfowl and woodland species in abundance. During the late dry season (late August onward), both white-fronted and carmine bee-eaters nest in the banks of the rivers, their iridescent plumage creating a colorful spectacle.

Day 11: Chartered Flight to Lusaka / Depart

After breakfast, fly this morning by private chartered aircraft back to Lusaka, where we meet homeward flights.



Discovering Our Planet Together



Accommodation Details:

Latitude 15

Amanzi

Zungulila

Bilimungwe

For detailed descriptions, visit nathab.com/africa/zambia-walking-safari/accommodations

Wild Zambia Accommodations

Walking Safaris, Game Drives & River Exploration in the Unspoiled Heart of Africa



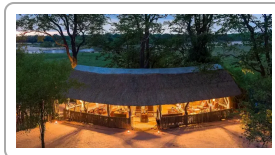
Latitude 15

A stylish eco-conscious hotel that blends modern African design with recycled art, offering upscale rooms, a spa, gym, restaurant and easy airport access.



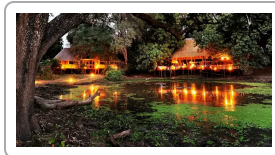
Amanzi

Set on the Zambezi River in Zambia, this solar-powered, eco-conscious lodge offers luxurious tented suites, seasonal cuisine and wildlife views—blending privacy, sustainability, and natural beauty.



Zungulila

Set above the Kapamba River, this solar-powered safari camp features open-air suites, private plunge pools, regional cuisine and views of wildlife and surrounding nature.



Bilimungwe

This solar-powered safari camp sits near three waterholes, offering daily wildlife sightings, open-air lounging, locally sourced meals, handcrafted design and strong ties to the surrounding community.



Discovering Our Planet Together



Discovering Our Planet Together

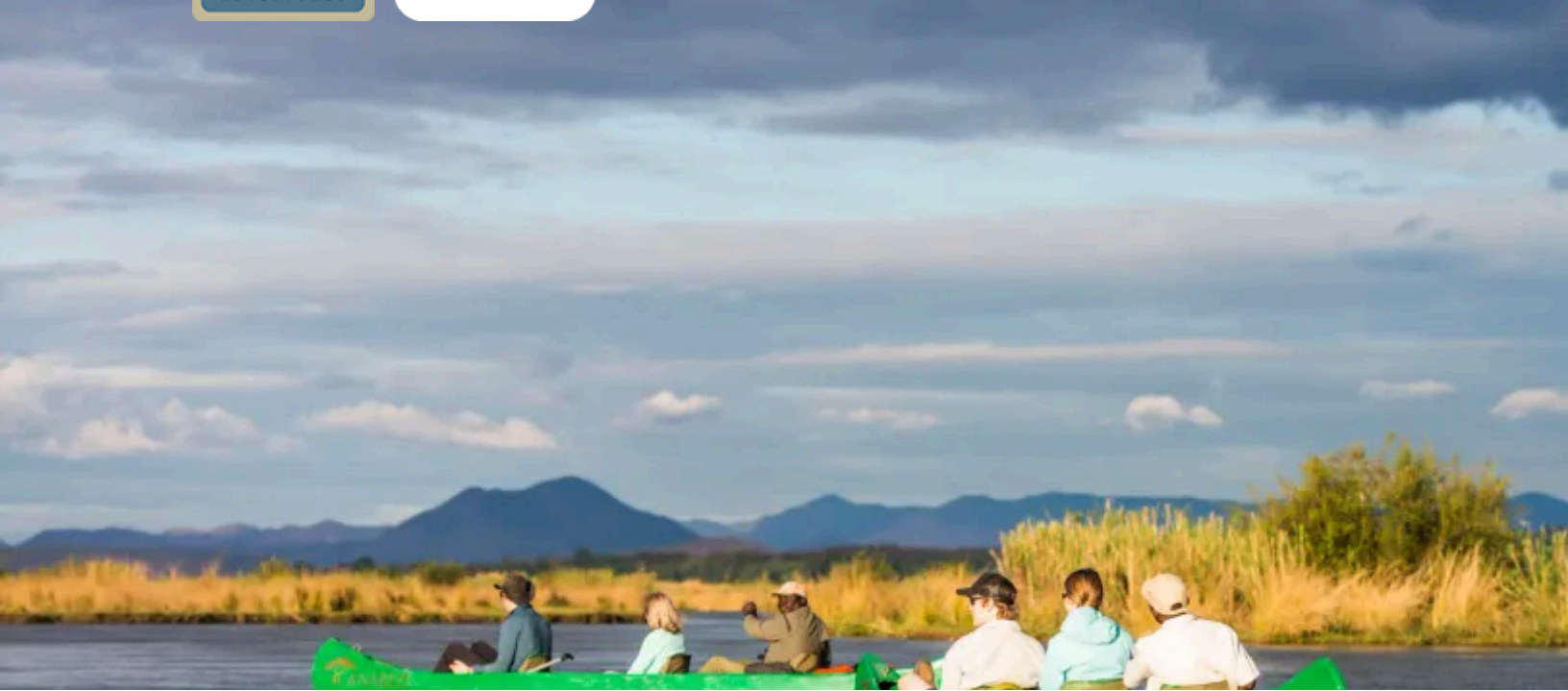


Make It Private or Design Your Own Custom Safari

This **Make It Private** option is available on nearly every Nat Hab trip for family and friend groups. Call an Adventure Specialist at 800-543-8917 or look for the "Make It Private" icon in the **pricing section** of a trip online at nathab.com to see prices based on your specific group size.



Discovering Our Planet Together



Dates & Pricing Summary:

Prices:
From \$15995
(+Air)

Group Size:
Limited to 6
Travelers

Physical Requirements:
Moderate

Wild Zambia Dates, Pricing & Info

Walking Safaris, Game Drives & River Exploration in the Unspoiled Heart of Africa

2026 Departures

| Departure | Return | Notes |
|--------------|--------------|-------|
| Jun 11, 2026 | Jun 21, 2026 | |
| Jul 1, 2026 | Jul 11, 2026 | |
| Jul 13, 2026 | Jul 23, 2026 | |
| Aug 2, 2026 | Aug 12, 2026 | |
| Aug 15, 2026 | Aug 25, 2026 | |
| Sep 1, 2026 | Sep 11, 2026 | |
| Sep 28, 2026 | Oct 8, 2026 | |
| Oct 7, 2026 | Oct 17, 2026 | |



Pricing

2026 Prices

➤ **Trip Price**

\$15995 to \$17495 (+internal air)



Internal Air Cost: \$2487 per person (this will be listed separately on our invoicing).

Single Occupancy: For a single room add \$3995. **Click here** to learn how you can avoid the single supplement.

Deposit: \$500 per person (nonrefundable)

Trip prices are per person based on double occupancy and are given in U.S. dollars.

Please read our Payment & Refund Policy here.

Physical Requirements

Moderate

While all walks are considered optional, walking is considered one of the best ways to see the South Luangwa and you will get the most out of your safari experience if you can walk 2-3 miles over uneven ground without assistance. Walking excursions to view wildlife may include short, casual walks as well as longer walks, depending on the ability and preferences of the group. We recommend that all travelers have an adventurous spirit, as they will often enjoy the closest animal encounters.

Safari drives can be bumpy and long as we traverse rough terrain and pot-holed roads, potentially causing discomfort for those with back, neck, or other health issues. Guests must independently climb into high-profile 4x4 vehicles multiple times daily and they will need upper body strength and dexterity to step up and into the vehicle. Safari days are long, starting before dawn and ending after dusk. Accommodations and vehicles lack climate control, with temperatures varying widely by season and requiring adequate layers and clothing options.

Mandatory Insurance

Since the areas we travel to are remote and wild (that's why we go there!), we require that all guests have, at minimum, medical evacuation insurance for this program. This is for the safety of all guests. We require that your chosen independent insurance plan includes at least \$250,000 in medical evacuation coverage.

To protect your investment and to provide peace of mind while you travel, we also strongly recommend purchasing comprehensive travel insurance. Plans may cover everything from medical treatment to trip cancellations and delays and lost luggage. Please contact our office if you would like more information about the medical evacuation and comprehensive travel insurance policies we offer by calling 800-543-8917.



Natural Habitat & WWF: Discovering Our Planet Together

Natural Habitat Adventures • PO Box 3065 • Boulder, CO USA 80307

USA & Canada: 800-543-8917 • International: 303-449-3711

© 2025 Natural Habitat Adventures

WWF's membership travel program is operated by Natural Habitat Adventures (Nat Hab). To date, Nat Hab has provided more than \$6 million in support of WWF's mission and will continue to give 1% of gross sales plus \$175,000 annually through 2028. WWF® and ©1986 Panda Symbol are owned by WWF. All rights reserved.