



Discovering Our Planet Together



Hidden Yellowstone & Grand Teton Safari

An Intimate, Expertly Guided Encounter with Iconic Western Wildlife & Landscapes



Table of Contents:

Trip Overview	3
Trip Itinerary	4
Trip Accommodations	7
What Makes Nat Hab Different?	9
Make It Private	12
Dates & Pricing Information	13



Discovering Our Planet Together



Trip Details:

Days
7 Days / May-Oct

Price
From \$6995

Physical Requirements
Easy to Moderate

Hidden Yellowstone & Grand Teton Safari

An Intimate, Expertly Guided Encounter with Iconic Western Wildlife & Landscapes

When President Theodore Roosevelt encountered Yellowstone's wondrous geology and abundant animals during a visit to America's first national park in 1903, he proclaimed it "absolutely unique in the world." Embracing natural beauty as a shared asset, he championed the idea of national parks, building a priceless legacy for generations to follow. In the northwest corner of Wyoming, two of America's most treasured parks offer scenic grandeur and prolific wildlife unparalleled in the Lower 48, with outstanding opportunities for nature photography. This classic small-group safari through Yellowstone and the Tetons takes us into the domain of elk and bison, moose, bighorn sheep, coyotes, foxes, bald eagles and, of course, black bears, grizzlies and wolves. From plains to peaks, Yellowstone Country still works strong magic.

Trip Highlights

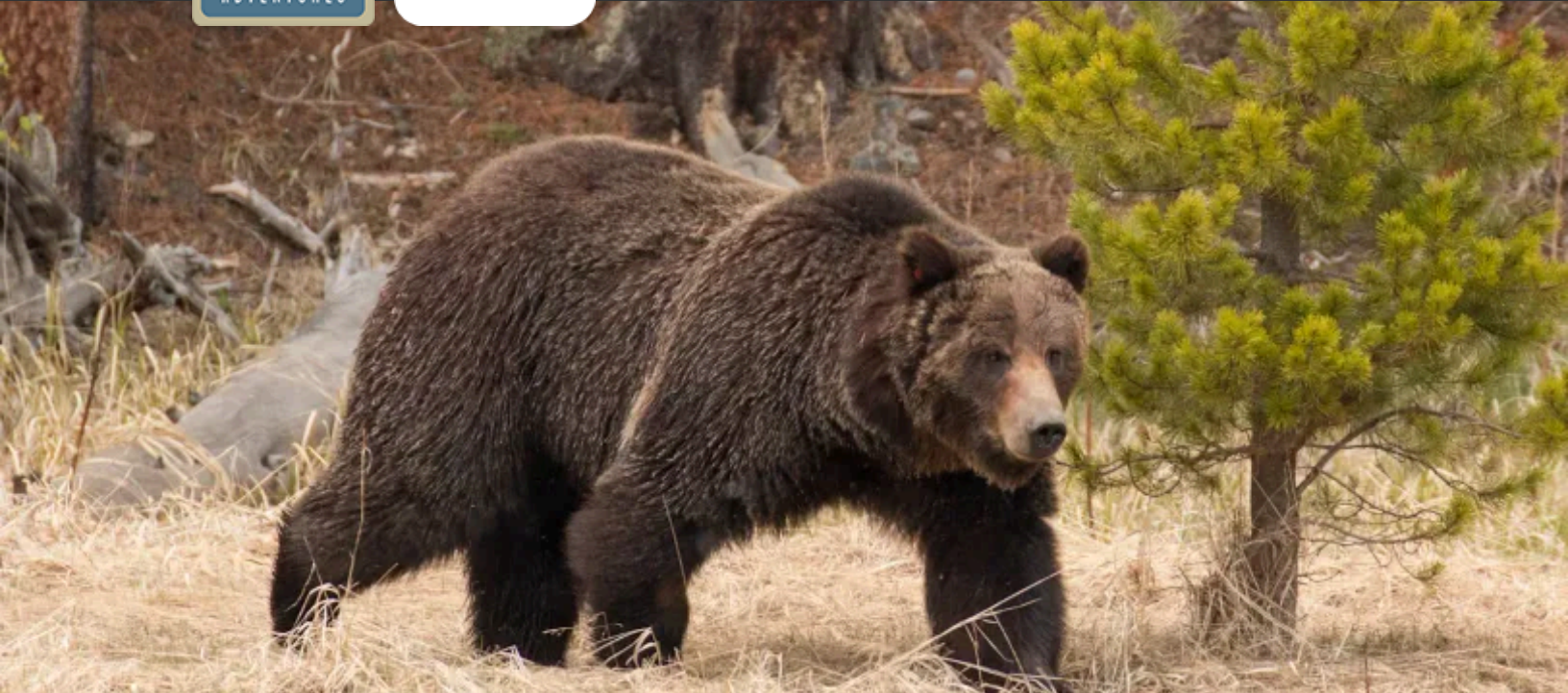
Discover wildlife spots most visitors miss, plus other surprises revealed only by our naturalist Expedition Leaders, who know Yellowstone Country intimately

Take a mellow raft trip through Jackson Hole beneath the spires of the Tetons as we scout for elk, moose and otters and watch for eagles flying overhead

Our new, fully customized Mercedes Sprinters have luxury bucket seats, USB chargers and pop-top roofs that lift completely off for 360-degree views



Discovering Our Planet Together



Itinerary At A Glance

- Day 1**
Jackson, Wyoming
- Day 2**
Grand Teton National Park—
Scenic Float Trip
- Day 3**
Oxbow Bend / Yellowstone
National Park—Old Faithful
- Day 4**
Hayden Valley / Grand Canyon of
the Yellowstone / Lamar Valley /
Gardiner
- Day 5**
Lamar Valley Wildlife Safari
- Day 6**
Mammoth Hot Springs / Wolf
Tracking / Paradise Valley /
Bozeman
- Day 7**
Bozeman / Depart

Hidden Yellowstone & Grand Teton Safari Itinerary

An Intimate, Expertly Guided Encounter with Iconic Western Wildlife & Landscapes

Day 1: Jackson, Wyoming

The Old West town of Jackson sits on the edge of Grand Teton National Park. While retaining its cowboy flavor, Jackson hosts guests with plenty of contemporary panache. We spend the first night of our Yellowstone safari tour here, meeting our Expedition Leaders and fellow adventurers at a welcome dinner this evening.





Day 2: Grand Teton National Park—Scenic Float Trip

Nothing quite prepares you for the drama of the Grand Tetons, which rear up in a row of pointed peaks from the floor of Jackson Hole. Protected forever in one of America's most impressive national parks, the Tetons are emblems of the West's wild majesty. Grand Teton's wildlife is as magnificent as its mountains, and we may see elk, pronghorn antelope, mule deer, bison and eagles as we traverse the park today in our specialty **North American Safari Trucks**. With large windows, leather bucket seats with charging points, and a pop-top roof that lifts completely up for a 360° view on the landscape, these custom vehicles are designed for optimal wildlife viewing. This afternoon, water level permitting, float the placid Snake River beneath the jagged backdrop of the Tetons, looking out for moose, beaver, osprey, pelicans, or even a black bear near the river's edge.

Day 3: Oxbow Bend / Yellowstone National Park—Old Faithful

Moose are our objective this morning as we search the willow-covered bottomlands of Oxbow Bend just east of Jackson Lake. The slow-moving water provides habitat for fish that are food for other wildlife, and we may spy river otter, beaver, muskrat, osprey, bald eagles and American white pelicans. Continuing north to enter Yellowstone, the world's first national park, established in 1872, we get our first glimpse of the geothermal features that dot the landscape. From bubbling mud pots to eruptions of boiling water rocketing skyward, Yellowstone's geyser areas are one of the unique features that captivated early explorers like John Colter and Jim Bridger and prompted conservationists like Teddy Roosevelt to encourage protection of the park's natural assets. We also learn about fire ecology as we drive through recovering areas once ravaged by wildfires. At Old Faithful this afternoon, there's ample time to see the famous geyser erupt and to walk among the fumaroles and hot springs nearby.

Day 4: Hayden Valley / Grand Canyon of the Yellowstone / Lamar Valley / Gardiner

Much more of the park lies ahead, including Hayden Valley, a favored grazing area for large herds of bison and elk. Yellowstone is home to some 4,000 bison, the largest land mammals in North America, which we expect to encounter today. Bighorn sheep may be on display near Mount Washburn, and we may also spot coyotes and bald eagles. A stop at the Grand Canyon of the Yellowstone, where Yellowstone Falls pours off a sheer cliff into a thousand-foot-deep gorge, offers the park's most inspiring vista. This afternoon, continue to the Lamar Valley in the park's remote northeast corner, where we use spotting scopes to search for grizzly bears and wolves. Though Yellowstone's famous gray wolves are elusive and almost always seen at a substantial distance, the Lamar Valley is the best place in North America to look for them. We have the added advantage of working closely with wolf researchers in the park, who help us track them. Tonight, we stay just outside the park's northern boundary in Gardiner, Montana, which lies along the Yellowstone River.



Day 5: Lamar Valley Wildlife Safari

Early this morning, return to the broad meadows of the Lamar Valley in search of wolves, grizzly bears and large herds of elk and bison. Gray wolves were reintroduced here to their native ecosystem amid much controversy in the 1990s. After a 70-year absence following their government-sanctioned eradication, wolves have again flourished, supported by bountiful prey. In addition, their predatory presence has helped to right imbalances in the ecosystem. But as prey numbers have diminished and wolf hunting outside the park has increased, the frequency and proximity of wolf sightings has decreased. We often spy them, though, and our guides' high-powered spotting scopes bring their activities in for a closer view. The afternoon, visit the art gallery of Dan Hartman, a local wildlife photographer whose wolf images are highly renowned. We then return to Gardiner to spend another night.

Day 6: Mammoth Hot Springs / Wolf Tracking / Paradise Valley / Bozeman

This morning, we stop to walk among the white limestone terraces of Mammoth Hot Springs, where we often see many elk in the area. Steaming with thermal water that spills over the travertine layers, the springs have been described as a "cave turned inside out," with heat-loving organisms called thermophiles adding distinct colors to the mineral-laden formations. After a last opportunity for wolf tracking in the Northern Range, we exit the park and follow the Yellowstone River through Emigrant Canyon into the scenic Paradise Valley, flanked by the Absaroka and Gallatin ranges. Arriving in Bozeman, we check in to our hotel in the city's historic downtown and recount our adventures over a farewell dinner this evening.

Day 7: Bozeman / Depart

Our Yellowstone safari concludes this morning. The day is free to enjoy Bozeman, a historic Old West/New West town with a rich mining, ranching and trapping heritage. The city boasts 47 individual properties on the National Register of Historic Places. Today, its thriving economy is increasingly driven by tourism and technology, and it's also home to Montana State University. Bozeman offers a wide range of cultural and outdoor activities. A highlight is the Museum of the Rockies, a Smithsonian Affiliate and repository for state and national dinosaur fossils, including Montana's mounted T. rex skeleton. A transfer to the airport to meet departing flights is included.

Natural Habitat Adventures is an authorized permittee of Grand Teton and Yellowstone national parks.



Discovering Our Planet Together



Accommodation Details:

The Rockwell Inn at Jackson Hole

Jackson Lake Lodge

Old Faithful Snow Lodge

Mammoth Hot Springs Hotel

Canyon Lodge

Yellowstone Gateway Inn

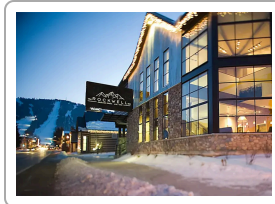
Ridgeline Hotel at Yellowstone

Armory Hotel

For detailed descriptions, visit nathab.com/us-national-parks-tours/yellowstone-safari/accommodations

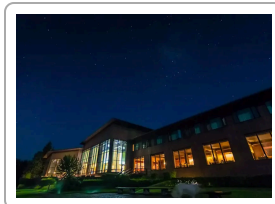
Hidden Yellowstone & Grand Teton Safari Accommodations

An Intimate, Expertly Guided Encounter with Iconic Western Wildlife & Landscapes



The Rockwell Inn at Jackson Hole

Ideally located in the heart of Jackson, Wyoming, the Rockwell Inn accommodates guests in an atmosphere of rustic mountain elegance that perfectly blends Old West heritage with contemporary comforts.



Jackson Lake Lodge

Built in 1955, Jackson Lake Lodge is the first example of modernist architecture in a national park, showcasing the lake and full glory of the Tetons through the 60-foot-tall windows in its dramatic main lounge.



Old Faithful Snow Lodge

Located near Yellowstone's most famous geyser, Old Faithful, the Snow Lodge is the newest of Yellowstone's full-service hotels and has been recognized with the Cody Award for Western Design.



Mammoth Hot Springs Hotel

Built in 1936 near the north entrance of Yellowstone National Park, the Mammoth Hot Springs Hotel is a welcoming lodge built in the Art Moderne architectural style and is famed for its signature map room containing a large wooden map of the United States.



Canyon Lodge

Sprawling Canyon Lodge is located on the east side of Yellowstone National Park near the Grand Canyon of the Yellowstone River. It was recently extensively renovated to be a trailblazer in sustainable national park lodging.



Yellowstone Gateway Inn

Optimally located at the north entrance to Yellowstone National Park in walking distance from historic downtown Gardiner, this homey all-suite hotel gives you plenty of room to relax.



Ridgeline Hotel at Yellowstone

Our rooms at this well-appointed boutique hotel overlook the Yellowstone River, in walking distance of the historic center of Gardiner, the northern gateway to Yellowstone National Park.



Armory Hotel

One block off historic Main Street, Bozeman's only 4-star hotel melds old and new to create sophisticated boutique lodgings that honor the heritage of the landmark Armory building.



Why Choose Our Expertly Guided Small-Group Adventure?

Among America's best-known and best-loved national parks, Yellowstone and Grand Teton host several million visitors each year—which is precisely the reason you should see them with us. Our decades of experience and deep local knowledge make a big difference in providing a richer, easier, less crowded and less commercialized experience of these legendary vacation destinations.

1 Don't Go It Alone—Let Us Take the Hassle Out!

When you travel on your own, you spend a lot of time researching, planning, asking questions, competing for reservations, or driving around trying to figure out where to go and what to do. As a result, you lose precious time and miss the secret spots known only to locals. We've taken out the legwork and guesswork: because we've already researched and tested everything, and we coordinate reservations far in advance, you'll experience much more than most people can accomplish on their own.

2 Small Groups Make a BIG Difference

In contrast to motorcoach tours, our small groups are limited to *just seven guests per private safari vehicle!* With a maximum of 13 guests (in two vehicles) per departure plus two Nat Hab Expedition Leaders and a support staff member, we offer a matchless guide-to-guest ratio and a far more intimate nature adventure. We can move more quickly to areas where wildlife has recently been spotted and access roads and places buses can't reach.

3 "Hidden" Wildlife Enclaves, Private Experiences & Fewer Crowds

Our itinerary features out-of-the-way corners of Yellowstone and Grand Teton national parks that most visitors miss. With in-depth knowledge of the Greater Yellowstone Ecosystem, our Expedition Leaders take you to lesser-known areas where wildlife viewing is better and crowds are fewer. Over the years we've developed relationships with a range of interesting locals, and you'll get personalized experiences you wouldn't have access to on your own, such as a home visit with a famous local wildlife photographer.



4

Expert Naturalist Guides Add Immeasurably to Your Experience

Our Expedition Leaders are professional naturalists and biologists who know this region like few others. Many guide and teach here year-round, all have in-depth knowledge of the places we visit, resident wildlife behavior, and where and when to be in particular places to see animals. Our guides are the most senior in the region, called on to train other local guides. *We can't emphasize enough how much difference this expertise makes to your overall experience.* They are also in constant communication with local wolf researchers, providing our groups the most up-to-date knowledge of wolf locations and activity. **See Expedition Leader bios** with traveler comments regarding the quality of our leaders.

5

Exclusive Nat Hab Safari Cruisers—Pop-Top Roofs Enhance Viewing

A far cry from the typical buses or vans other companies use, Nat Hab has crafted new Mercedes Sprinters into specialty **North American Safari Cruisers**. Featuring luxury bucket seats, USB chargers, expansive side windows and a pop-top roof offering 360° views on the landscape, these impressive vehicles provide a superlative wildlife viewing experience, not to mention exceptional comfort. Every guest has a window seat and plenty of room for camera equipment and other gear. These exclusive vehicles make a big difference!

6

Extended Time with a Local Naturalist Photographer

Exclusively for Nat Hab guests, we have arranged a private home and gallery visit with Dan Hartman, one of Yellowstone's most famous wildlife photographers, whose work has been featured in *National Geographic* and other noted outlets. His wolf images are particularly renowned, and he is an important Yellowstone naturalist in his own right.

7

A Diversity of Seasons So You Can Choose Your Preference

No matter when you visit Yellowstone Country, you are in for an exciting nature display. In spring, crowds are fewer, the landscape is bright green with the peaks still blanketed by snow, and babies abound: bear cubs, bison and moose calves, fawns and wolf pups. Bears are especially active searching for food after hibernation, and cooler temperatures tend to mean more wildlife activity. In high summer, wildflowers are in full bloom and animals are still very active. Long days allow us to rise early and linger late, maximizing time for the best wildlife viewing when visitors have left the park or aren't yet out and about for the day. Fall is splendid here, with autumn's palette of golden aspen and willow contrasting against brilliant blue skies and providing a superb backdrop for wildlife photos. Crowds are fewer again, too, as we listen for bugling elk and look for rotund bears, fattening up before winter.

8

Our Quality-Value Guarantee Ensures Your Yellowstone Adventure

With Natural Habitat Adventures, you receive our exclusive guarantee, stating clearly that we will meet the lofty expectations we set forth in our promotional materials. We think this is the most ambitious guarantee made by any adventure travel company.



9 **Feel Good About Your Carbon-Neutral Journey**

We care deeply about our planet, as we know you do. When you travel with us, the carbon emissions from your trip are 100% offset—including your round-trip flights from home. Natural Habitat Adventures has been the world's first carbon-neutral travel company since 2007.

10 **Natural Habitat Adventures is WWF's Travel Partner**

Because of our commitment to environmentally friendly travel, as well as the exceptional quality of our adventures, World Wildlife Fund—the world's leading environmental conservation organization—has named Natural Habitat Adventures as its worldwide travel partner, a designation that makes us exceedingly proud!



Make It Private with Your Family or Friends

Travel privately, exclusively with your immediate family, multi-generational family or group of friends. And when you choose a private departure, you're assured the most exclusive and authentic Hidden Yellowstone & Grand Teton Safari on offer. Request your private departure by completing the form below.

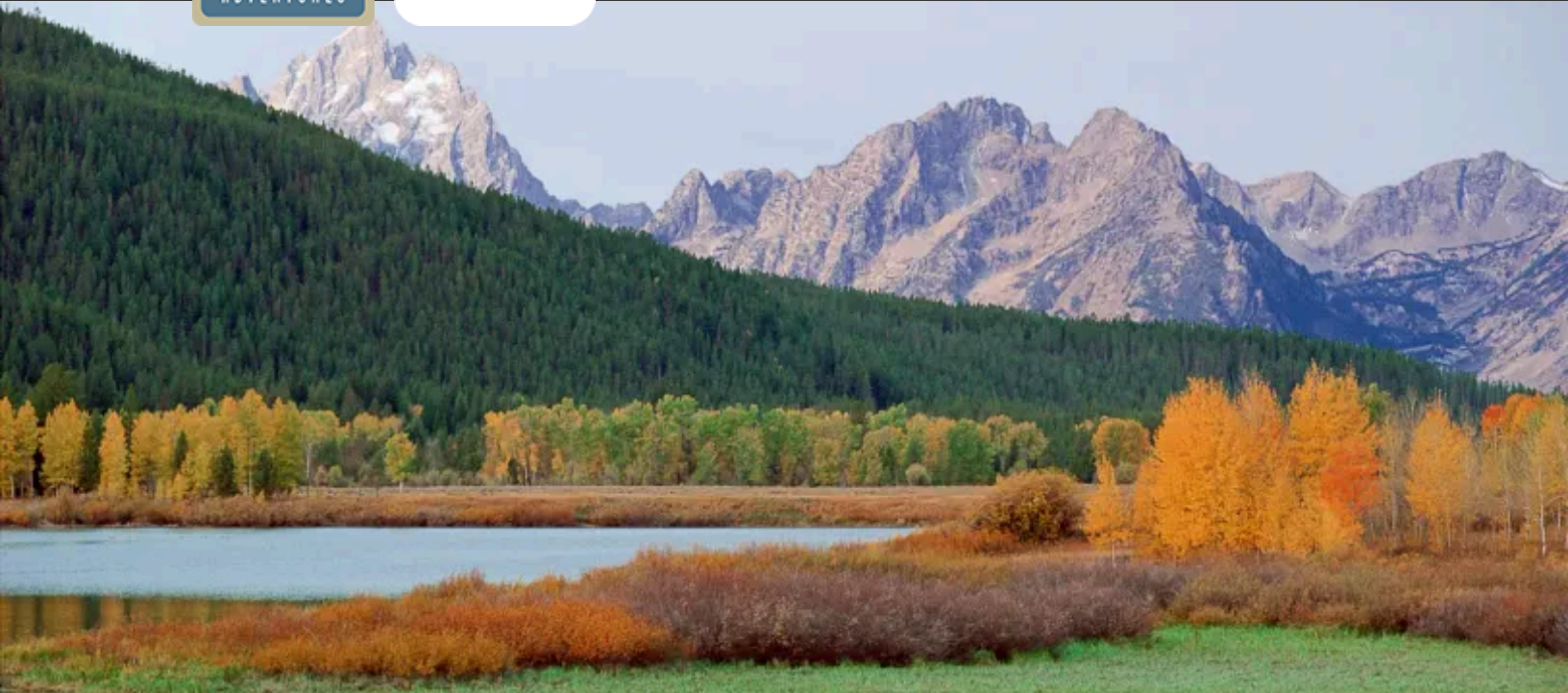
Please note that on Hidden Yellowstone Make It Private departures we require a minimum group size of 6 travelers.

Also, please be aware that your per-person cost on a Make It Private trip will vary depending on the number of travelers in your group and may be as much as 10%-30% higher (ship-based trips may be even higher) than our normal trip cost unless you fill the trip.

This **Make It Private** option is available on nearly every Nat Hab trip for family and friend groups. Call an Adventure Specialist at 800-543-8917 or look for the "Make It Private" icon in the **pricing section** of a trip online at nathab.com to see prices based on your specific group size.



Discovering Our Planet Together



Dates & Pricing Summary:

Prices: From \$6995

Group Size: Limited to 13 Travelers

Physical Requirements: Easy to Moderate

Hidden Yellowstone & Grand Teton Safari Dates, Pricing & Info

An Intimate, Expertly Guided Encounter with Iconic Western Wildlife & Landscapes

2025 Departures

Departure	Return	Notes
May 24, 2025	May 30, 2025	Jackson to Bozeman Wildflower Season
May 31, 2025	Jun 6, 2025	Bozeman to Jackson Wildflower Season
Jun 7, 2025	Jun 13, 2025	Jackson to Bozeman Wildflower Season
Jun 21, 2025	Jun 27, 2025	Jackson to Bozeman Wildflower Season
Jul 5, 2025	Jul 11, 2025	Jackson to Bozeman Wildflower Season Women-Only Departure
Jul 12, 2025	Jul 18, 2025	Bozeman to Jackson Wildflower Season
Aug 2, 2025	Aug 8, 2025	Jackson to Bozeman Habitat Club Pricing Available
Aug 9, 2025	Aug 15, 2025	Bozeman to Jackson
Aug 16, 2025	Aug 22, 2025	Jackson to Bozeman



Dates & Pricing Summary:

Prices:
From \$6995

Group Size:
Limited to 13 Travelers

Physical Requirements:
Easy to Moderate

Departure	Return	Notes
Aug 23, 2025	Aug 29, 2025	Bozeman to Jackson
Sep 6, 2025	Sep 12, 2025	Jackson to Bozeman Fall Foliage Season
Sep 13, 2025	Sep 19, 2025	Bozeman to Jackson Fall Foliage Season
Sep 20, 2025	Sep 26, 2025	Jackson to Bozeman Fall Foliage Season
Sep 27, 2025	Oct 3, 2025	Bozeman to Jackson Fall Foliage Season

2026 Departures

Departure	Return	Notes
May 23, 2026	May 29, 2026	Jackson to Bozeman Wildflower Season
May 30, 2026	Jun 5, 2026	Bozeman to Jackson Wildflower Season
Jun 6, 2026	Jun 12, 2026	Jackson to Bozeman Wildflower Season
Jun 13, 2026	Jun 19, 2026	Bozeman to Jackson Wildflower Season
Jun 20, 2026	Jun 26, 2026	Jackson to Bozeman Wildflower Season
Jun 27, 2026	Jul 3, 2026	Bozeman to Jackson Wildflower Season
Jul 4, 2026	Jul 10, 2026	Jackson to Bozeman Wildflower Season
Jul 11, 2026	Jul 17, 2026	Bozeman to Jackson Wildflower Season
Jul 18, 2026	Jul 24, 2026	Jackson to Bozeman Wildflower Season
Jul 25, 2026	Jul 31, 2026	Bozeman to Jackson
Aug 1, 2026	Aug 7, 2026	Jackson to Bozeman
Aug 8, 2026	Aug 14, 2026	Bozeman to Jackson
Aug 15, 2026	Aug 21, 2026	Jackson to Bozeman
Aug 22, 2026	Aug 28, 2026	Bozeman to Jackson
Aug 29, 2026	Sep 4, 2026	Bozeman to Jackson
Sep 5, 2026	Sep 11, 2026	Jackson to Bozeman Fall Foliage Season
Sep 5, 2026	Sep 11, 2026	Bozeman to Jackson Fall Foliage Season



Discovering Our Planet Together

Departure	Return	Notes
Sep 12, 2026	Sep 18, 2026	Jackson to Bozeman Fall Foliage Season
Sep 12, 2026	Sep 18, 2026	Bozeman to Jackson Fall Foliage Season
Sep 19, 2026	Sep 25, 2026	Jackson to Bozeman Fall Foliage Season
Sep 19, 2026	Sep 25, 2026	Bozeman to Jackson Fall Foliage Season
Sep 26, 2026	Oct 2, 2026	Jackson to Bozeman Fall Foliage Season
Oct 3, 2026	Oct 9, 2026	Bozeman to Jackson Fall Foliage Season



Pricing

2025 Prices

Mouse over or tap dates above to view prices for specific departure dates.

- **Trip Price**
\$6995 to \$7195

Single Occupancy: For a single room add \$1695. **Click here** to learn how you can avoid the single supplement.

Deposit: \$500 per person

Trip prices are per person based on double occupancy and are given in U.S. dollars.

Please read our Payment & Refund Policy here.

2026 Prices

Mouse over or tap dates above to view prices for specific departure dates.

- **Trip Price**
\$7895 to \$8095

Single Occupancy: For a single room add \$1695. **Click here** to learn how you can avoid the single supplement.

Deposit: \$500 per person

Trip prices are per person based on double occupancy and are given in U.S. dollars. **Please read our**

Payment & Refund Policy here.

Included

Accommodations, meals from dinner on Day 1 to breakfast on final day, drinking water throughout the trip, services of Nat Hab Expedition Leaders and local guides, airport transfer on Day 1 and final day, some gratuities, all permits, entrance fees and taxes.

Not Included

Travel to and from start and end points of trip, alcoholic beverages, some gratuities, passport and visa fees, optional activities, items of a personal nature (phone calls, souvenirs, etc.), airline baggage fees, airport and departure taxes, optional travel insurance.





Physical Requirements

Easy to Moderate

This adventure does not require a high degree of physical fitness; however, in order to get the most out of your experience, you must be able to walk at least one mile unassisted on dirt trails with potentially uneven terrain and inclines, and possibly muddy or slippery surfaces, at altitudes of up to 8,400 feet above sea level. In order to view Old Faithful, you must be able to walk 300 yards over gently sloping pavement and boardwalk. To explore Yellowstone's geothermal basins, you must be able to walk at least one mile over boardwalk, dirt trails and undulating paved paths. Depending on the location of wildlife, each day may bring several opportunities for short walks ranging from 300 yards to one mile, sometimes on well-maintained trails or pavement, sometimes on rough, uneven terrain with some inclines. Due to the altitude and terrain, hikes are considered moderate in terms of physical exertion. However, a fair amount of our wildlife viewing takes place from our vehicles that are selected to enhance observation opportunities. Our days generally start quite early, often before sunrise, when wildlife viewing is at its best and other visitors are at a minimum. We stress that all activities are optional.

On custom or private departures with smaller groups, our ability to accommodate varying levels of physical abilities or interests is limited, since these trips are staffed with a single Expedition Leader who may be assisted, pending availability, by local guides.

Important Information About This Trip

While the Lamar Valley and Yellowstone National Park offer some of the best opportunities to see wolves in the wild, they are still very elusive and generally do not come within close range of humans. Since our trip offers a totally natural, uncontrived experience, most wolf viewing is done at a distance through spotting scopes. We are thus able to watch the packs go about their normal behavior uninfluenced by the presence of humans. It is important to understand that it is extremely difficult to see wolves without the use of a spotting scope (which Nat Hab provides). Often, the best way to get wolf photos is with a cell phone camera through a spotting scope. Your Expedition Leader will help you with this technique, called "digiscoping." While a long lens is a must for photographers, even then, we can't guarantee excellent shots of wolves. However, we are likely to see plenty of the region's other iconic species at closer range, and the sheer beauty and grandeur of the landscape provides magnificent nature imagery.

Our Expedition Leaders, who know the Greater Yellowstone region intimately, are adept at getting our groups to less-visited areas away from crowds. But of course, Yellowstone is a very popular destination, so be prepared for a fair amount of company no matter when you travel. We operate this Rocky Mountain safari in a manner similar to our African safaris: visiting prime wildlife locations in the early morning when viewing opportunities are best and most visitors are still asleep.

Getting There & Getting Home

Arrival: Arrive by 4 pm in order to attend a welcome dinner beginning at 6 pm on Day 1.

Departure: You may depart at any time on the final day.



Natural Habitat & WWF: Discovering Our Planet Together

Natural Habitat Adventures • PO Box 3065 • Boulder, CO USA 80307

USA & Canada: 800-543-8917 • International: 303-449-3711

© 2025 Natural Habitat Adventures

WWF's membership travel program is operated by Natural Habitat Adventures (Nat Hab). To date, Nat Hab has provided more than \$6 million in support of WWF's mission and will continue to give 1% of gross sales plus \$175,000 annually through 2028. WWF® and ©1986 Panda Symbol are owned by WWF. All rights reserved.