



Discovering Our Planet Together



The Grand India Wildlife Adventure

An In-Depth Nature Odyssey in Search of Bengal Tigers & Other Rare Wildlife



Discovering Our Planet Together

Table of Contents:

Trip Overview	3
Trip Itinerary	4
Trip Accommodations	10
What Makes Nat Hab Different?	12
Make It Private	14
Dates & Pricing Information	15
Trip Extensions	22



Discovering Our Planet Together



Trip Details:

Days

13 Days / Dec–Apr

Price

From \$12695
(+Air)

Physical Requirements

Easy to
Moderate

The Grand India Wildlife Adventure

An In-Depth Nature Odyssey in Search of Bengal Tigers & Other Rare Wildlife

The Indian subcontinent is one of the world's most stimulating destinations. While its melange of cultures has long drawn the attention of historians and travelers, its wild habitats offer rare treasures for those who are passionate about nature. This comprehensive safari gets you far away from India's intense cities and into its natural realm, a landscape of powerful rivers, fabled jungles and intriguing wildlife. From Bandhavgarh to the Brahmaputra basin, this is the native territory of the Bengal tiger, whose numbers are on the rise after a century of decline. Conservation travel is integral to protecting wildlife in India, and our presence directly benefits the continued existence of tigers and other precious vanishing species, which we go in search of on daily 4x4 wildlife drives. Join us for the grandest Indian wildlife safari we know of!

Trip Highlights

Explore three of India's top national parks on multiple safari drives in open 4x4s—you won't find a richer or more varied itinerary focused on wildlife

Safari with our naturalist Expedition Leaders in search of tigers, one-horned rhinos, Asian elephants, sloth bears, barking deer, hoolock gibbons and more

Relax in comfort at premier ecolodges tucked next to India's best wildlife reserves, and avoid crowds in our quiet, set-apart locations



Discovering Our Planet Together



Itinerary At A Glance

Day 1

Delhi, India—Old Delhi Tour

Day 2

Jabalpur / Bandhavgarh National Park

Days 3 & 4

Bandhavgarh National Park

Day 5

Bandhavgarh / Kanha National Park & Tiger Reserve—Night Safari

Days 6 & 7

On Safari in Kanha National Park—Wildlife Drives

Day 8

Village Visit / Afternoon Game Drive in Kanha

Day 9

Kanha—Jungle Walk / Raipur / Kolkata

The Grand India Wildlife Adventure Itinerary

An In-Depth Nature Odyssey in Search of Bengal Tigers & Other Rare Wildlife



Discovering Our Planet Together

Day 1: Delhi, India—Old Delhi Tour

Arrive in New Delhi and transfer to the 5-star Taj Mahal Hotel in the heart of the leafy capital. This afternoon, explore the more ancient parts of this sprawling, vibrant city on a rickshaw tour that reveals the many layers of Delhi's captivating history. Stroll through the bylanes of Old Delhi and visit bustling Chandni Chowk Market and Jama Masjid, India's largest mosque and the architectural magnum opus of Mughal Emperor Shah Jahan. Built in the mid-17th century, the striking edifice is constructed of alternating vertical strips of red sandstone and white marble, with a vast inner courtyard that can hold 25,000 people. Depending on our timing, we may also visit a memorial to Mahatma Gandhi, or Bangla Sahib, one of the country's most revered Sikh temples. The complex is associated with Guru Har Krishan and includes the main temple, a school, a sacred water tank and a large community kitchen that generously prepares over 10,000 free meals each day, known as langar, all cooked by volunteers using donated ingredients from Sikh farmers. Return to our hotel with time to refresh before a welcome dinner this evening, with an orientation to our India wildlife safari by our Expedition Leader.





Itinerary At A Glance

Day 10

Jorhat / Kaziranga National Park

Days 11 & 12

Kaziranga National Park

Day 13

Guwahati / Delhi / Depart

Day 2: Jabalpur / Bandhavgarh National Park

Transfer to the airport very early this morning for our flight south to Jabalpur. Continue on a half-day's drive through the countryside of Madhya Pradesh to reach Bandhavgarh National Park. An essential stop on any serious India safari, Bandhavgarh is renowned for one of the country's highest concentrations of Bengal tigers. Originally established as a national park in 1968, Bandhavgarh was declared a protected tiger reserve under Project Tiger in 1993. At 444 square miles, it is a relatively small park with a thriving tiger population, offering visitors a good chance of encountering them, as well as other distinctive Indian wildlife. Check in to Kings Lodge, a leading ecolodge surrounded by wild natural forest just outside the park boundary. Then, time permitting, we'll set out on our first wildlife drive in open 4x4 safari vehicles.

Days 3 & 4: Bandhavgarh National Park

Over the next two days, explore Bandhavgarh's varied habitats on morning and afternoon wildlife drives. Covered predominantly with sal and mixed deciduous forest, thickets of bamboo and expansive grasslands that line the stream valleys, the park's hilly terrain harbors one of the world's highest densities of tigers. Bandhavgarh was once a prime hunting reserve for the Maharajas of Rewa, where Maharaja Raman Singh alone shot an astounding 111 tigers by 1914. Today it is a pacesetter in tiger protection. With tigers at the apex of the food chain, Bandhavgarh's rich biodiversity includes a multitude of other wildlife. We expect to see a sampler of its 37 mammal species, among which are leopard, jungle cat, civet, wild boar, sambar, spotted deer, muntjac (barking deer), gaur, sloth bear and Asiatic jackal. Some 250 bird species, 70 different butterflies and various reptiles round out the diverse wildlife population.



Discovering Our Planet Together

Day 5: Bandhavgarh / Kanha National Park & Tiger Reserve—Night Safari

After breakfast, embark on a half-day drive to Kanha National Park. Situated in the Satpura Hills of central India, the park covers 750 square miles of rich and varied wildlife habitat. Its lush sal and bamboo forests, grassy meadows and ravines provided inspiration to Rudyard Kipling for his famous collection of stories in *The Jungle Book*. Kanha was established as a national park in 1955 and forms the core of the Kanha Tiger Reserve, created in 1974 under India's Project Tiger. The park's landmark achievement is the preservation of the rare barasingha, an endangered swamp deer with 12-point antlers, saving it from near-extinction. Strict conservation programs for the overall protection of the park's fauna and flora make Kanha one of the most exemplary national parks in Asia. From our luxurious ecolodge base in the tiger heartland of the world, learn in depth about the Bengal tiger and its habitat and observe how conservation travel directly benefits local communities and the tiger reserve. Following lunch on arrival, enjoy a leisurely afternoon at the lodge, perhaps choosing a swim or a massage. Then, after dinner, we'll take an exciting night safari. Enveloped by the sounds of the jungle, we head out in search of nocturnal wildlife, including after-dark hunters like jackal, civet cats and Bengal fox. Very rarely, we might even spy a leopard on the prowl.

Days 6 & 7: On Safari in Kanha National Park—Wildlife Drives

Scenic Kanha, once a hunting ground for imperial rulers and viceroys, is now one of India's most important conservation reserves. We spend three days exploring this premier national park in search of Bengal tigers and other wildlife on excursions in open 4x4 vehicles. With ideal habitat for tigers and their prey, it offers some of India's best tiger viewing, though it can take effort to locate them in the sun-dappled forest that provides superb camouflage for many species. On our first two days, we greet the dawn with an early wildlife drive, entering the park just as the sun's rays are breaking over the jungle. The open meadows where herbivores graze attract tiger, leopard and dhole (wild dog) to the edges of the clearings, and we'll hope to see some of these predators on the hunt. The Banjaar River bordering the park provides a steady water source for wildlife. Dense jungle interspersed with vast grassy meadows called *maidans* support a range of species similar to those in Bandhavgarh. Other mammals we might see include barasingha (swamp deer), common langur, gaur (the world's largest wild ox) and rhesus monkeys. After returning to our ecolodge for lunch, we head back out for afternoon wildlife drives, anticipating more chances to search for tigers and other wildlife.



Discovering Our Planet Together

Day 8: Village Visit / Afternoon Game Drive in Kanha

Enjoy a leisurely breakfast followed by a walk through the village, including a visit to a local school. Gain insight into the daily lives and traditions of the Indigenous Baiga and Gond tribal people who have been at home in the jungle for centuries. Learn about their enduring culture and customs, including foraging practices, medicinal plants and subsistence hunting and fishing, with a chance to sample some of their foods and the floral alcohol they brew inside mud-plastered homes. We also admire their art, handicrafts, silver jewelry and intricate tattoos as we witness these rich artistic expressions. This afternoon, we have a final game drive in Kanha National Park, for one last chance to spot tigers and other notable wildlife amid the photogenic landscape of rolling hills, dense forest and grasslands. Later this evening, after we gather for dinner, join in some festive dancing around the campfire during a cultural presentation at our lodge.

Day 9: Kanha—Jungle Walk / Raipur / Kolkata

As the morning mists lift, we take a walk with our Expedition Leader in the buffer zone on the edge of the park's core area, following the Bahmani Nature Trail through pristine sal forest along the banks of the Banjar River. To be on foot in the jungle offers an intimate, primal encounter with this dense habitat and its wild inhabitants, in a manner that touches all five senses. Feel the leathery texture of a tendu leaf or size-up a tiger's pugmark with your hand. Smell the medley of fragrances, from blooming flowers to the aromatic herbs trampled by herds of deer. Hear birdsongs, taste wild berries, and feel the thrill of walking on paths imprinted by predators as we listen for alarm calls that resound through the jungle. Our guide shows us how to interpret tracks and other signs of animal activity, and it's especially exciting to find fresh pugmarks on the sandy riverbank. Look, too, for scratch marks, scat, droppings and scent marks that foster our awareness of the multitude of hidden creatures that surround us. Get a glimpse into the ancient geological history of this region, standing on the metamorphic rocks that edge the river, with gneiss, basalt and quartz exposed by the erosive power of water flowing for millions of years. We also learn more about the local Indigenous people who have been hunter-gatherers in the jungle for millennia, living as part of the intricate web of life.

After our jungle walk, we drive a half-day to Raipur, watching scenes of daily rural life unfold along the roadside, then fly to Kolkata late this afternoon. Our luxury hotel not far from the Kolkata airport provides a restful night's sleep after a long day of travel as we transit from one region of the country to another, with convenient access for our early flight tomorrow morning.



Discovering Our Planet Together

Day 10: Jorhat / Kaziranga National Park

Fly from Kolkata to Jorhat and then continue by road into far-eastern India, we reach Kaziranga National Park in the state of Assam. The park, which borders the sacred Brahmaputra River, was created in 1926 as a refuge for the one-horned rhinoceros. Once hunted nearly to extinction, this 2-ton beast today is a conservation success story, its population rebounding to more than 2,000 individuals. Two-thirds of the world's one-horned rhinos are found within the park, and we're sure to see plenty of them grazing in the open. In addition to the rhino, Kaziranga is home to some of India's other largest mammals including Asian elephant, Asian water buffalo and barasingha. Stay at Diphlu River Lodge, whose verdant grounds contain more than 40 species of trees and some 200 species of shrubs, creepers and climbers.

Days 11 & 12: Kaziranga National Park

Morning and afternoon wildlife drives reveal Kaziranga's diverse habitats—a mix of elephant grass, thorny rattan cane, tracts of semi-evergreen forest and shallow marshes. Stretching from the banks of the Brahmaputra River to the dense forests of the Mikir Hills, the reserve hosts an impressive variety of animals. In addition to one-horned rhinoceros, keep a close eye out for buffalo, elephant, wild boar, hog deer, hoolock gibbons, sloth bears and pythons, as well as the elusive Bengal tiger. The national park has been declared an Important Bird Area by Birdlife International and is home to a great variety of resident and migratory birds. Drawn to the life-giving artery of the Brahmaputra River, waterfowl abounds, and we may see egrets, pond herons, river terns, black-necked storks, fishing eagles and pelicans. In the river, look for otters and rare Gangetic dolphins.

A special event during our time in Kaziranga is a chance to meet the park's working elephants up close. These elephants, which accompany rangers on regular patrol missions, are accustomed to interacting with guests. Conditions permitting, on one afternoon an elephant will be brought to our lodge where we can help wash it under the guidance of its handler. On our final evening, revel in memories of our Indian safari adventures as we gather for a farewell dinner.

Day 13: Guwahati / Delhi / Depart

After breakfast, drive to Guwahati to catch our afternoon flight back to Delhi. Upon arrival at the Delhi airport, we transfer to our nearby hotel, just minutes away. An overnight stay is included along with a transfer to the international airport to meet departing flights, most of which leave late this evening.

Please Note: National parks in central India are closed on Wednesday afternoons. Should a portion of our visit to Kanha or Bandhavgarh fall on a Wednesday, we will have alternate afternoon activities planned in place of a wildlife drive.



Discovering Our Planet Together



Accommodation Details:

Taj Mahal Hotel, New Delhi

Kings Lodge

Singinawa Jungle Lodge

Taj City Center New Town
Kolkata

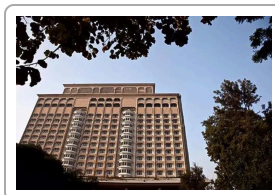
Diphlu River Lodge

JW Marriott Hotel New Delhi
Aerocity

For detailed descriptions, visit
nathab.com/asia-adventure-travel/wild-india/accommodations

The Grand India Wildlife Adventure Accommodations

An In-Depth Nature Odyssey in Search of Bengal Tigers & Other Rare Wildlife



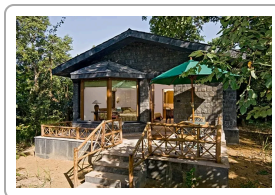
Taj Mahal Hotel, New Delhi

A distinguished address in India's leafy capital district, this 5-star hotel is a New Delhi landmark, with elegant interiors and finely appointed rooms reflecting traditional Mughal heritage in art, antiques and ambience.



Kings Lodge

Nestled with the sal and bamboo forest on a large estate minutes from Bandhavgarh National Park, this esteemed ecolodge feels at one with nature and is a pacesetter when it comes to sustainable practices.



Singinawa Jungle Lodge

This lodge reflects the practice of the Sherpa philosophy of *singinawa*—protection of the sacred forest—and offers all the comforts of a full-service resort within the wild environs of India's tiger heartland.

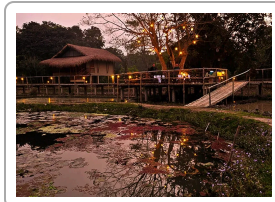


Discovering Our Planet Together



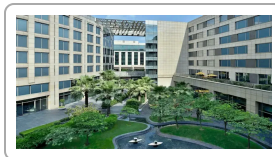
Taj City Center New Town Kolkata

The Taj City Center New Town Kolkata is conveniently located near the airport for ease in transferring between destinations, with all the amenities of a premier full-service hotel.



Diphlu River Lodge

Featuring an expansive common area on raised decks and 12 stilted cottages built with local bamboo and thatch, this acclaimed ecolodge feels at one with the jungle environs—and it's a pacesetter for sustainability.



JW Marriott Hotel New Delhi Aerocity

Conveniently located near New Delhi's international and domestic airports, this stylish, contemporary hotel offers a blend of luxury and convenience, with high-end amenities.



Why Choose Us for Your India Nature Adventure?

India is one of the world's most captivating travel destinations. But choosing a trip can be overwhelming if you're looking to maximize your time in nature, up your odds of seeing tigers, avoid crowds wherever possible, and travel with a superlative guide. That's why we've designed the ideal India odyssey for nature lovers. Our Grand India trip is a comprehensive adventure that is simply the best way to experience India's outstanding wildlife. Here's why:

1

An All-Encompassing Wildlife Itinerary...in Less-Traveled Parks This is the ultimate India experience for nature lovers. Boost your chances of seeing Bengal tigers—plus a host of other Indian wildlife—on visits to three different national parks that are home to some of India's most concentrated tiger populations. Most travelers go to Ranthambore National Park at peak season, which is heavily advertised and very crowded. We visit equally appealing Bandhavgarh National Park instead, plus Kanha and Kaziranga, which are more remote with far fewer tourists. Kanha also offers some of India's best tiger-viewing possibilities, while Kaziranga offers close encounters with rhinos and wild elephants. We also have a chance to see seven deer species and 600-plus bird species among an impressive diversity of wildlife.

2

India's Finest Naturalist Guides

Our India Expedition Leaders average more than 15 years' experience—with top-level training including resources from WWF scientists. You won't find more knowledgeable, personable or enthusiastic guides than those who are proud to work for us. Our philosophy is simple: a nature adventure is only as good as the guide who leads it, so we provide the very best! **See Expedition Leader bios** with traveler comments regarding the quality of our leaders.

3

A Small Group Means More Authentic Nature Experiences Most visitors to India travel in large groups aboard tour buses, focusing on cities and crowded cultural monuments. But that's no way to experience India's rich nature, which is our focus. We take just 11 guests, for a lower impact in nature reserves and more personal encounters with wildlife and local people.

4

Nine Days of Wildlife-Focused Activities in Varied Habitats Spend three days each in three premier wildlife reserves as we explore contrasting Asian habitats: the dry mixed deciduous forests of central India and the moist floodplains and grasslands of the Brahmaputra basin. Morning and afternoon safari outings provide a variety of perspectives.



Discovering Our Planet Together

5

Distinctive Accommodations Enhance Your Safari

When you travel with us to India, our accommodations ensure your every comfort. Environmentally sensitive ecolodges, while secluded, offer exceptional amenities. Each is selected for proximity to wildlife and the high quality of the guest experience. India's luxury urban hotels are renowned worldwide, and the 5-star hospitality of the landmark Taj Mahal Hotel in Delhi and the Taj City Center New Town Kolkata offer welcome indulgences before and between our safari adventures.

6

Our Presence Directly Helps to Protect Tigers

After years of precipitously declining tiger numbers, India is charting steady increases. Its 2022 quadrennial tiger census counted 3,682 tigers, up from 2,967 in 2018, an annual rise of 6%. Conservation groups attribute a share of the increase to responsible ecotourism. The economic value of visitors to India's tiger reserves benefits local communities, offering people an incentive to protect the wildlife they share the land with. Given that India is home to 75% of the world's remaining wild tigers, our presence here for wildlife tourism here is integral to that continued success.

7

Our Quality-Value Guarantee Ensures Your Outstanding India Wildlife Safari

With Natural Habitat Adventures, you receive our exclusive quality value guarantee that promises we will meet the high expectations we set forth in our promotional materials. To our knowledge, this is the most ambitious guarantee made by any adventure travel company.

8

Feel Good About Your Carbon-Neutral Journey

We care deeply about our planet, as we know you do. When you travel with us, the carbon emissions from your trip are 100% offset—including your round-trip flights from home. Natural Habitat Adventures has been the world's first carbon-neutral travel company since 2007.



Discovering Our Planet Together

Make It Private with Your Family or Friends

Travel privately, exclusively with your immediate family, multi-generational family or group of friends. And when you choose a private departure, you're assured the most exclusive and authentic Grand India Wildlife Adventure on offer. Request your private departure by completing the form below.

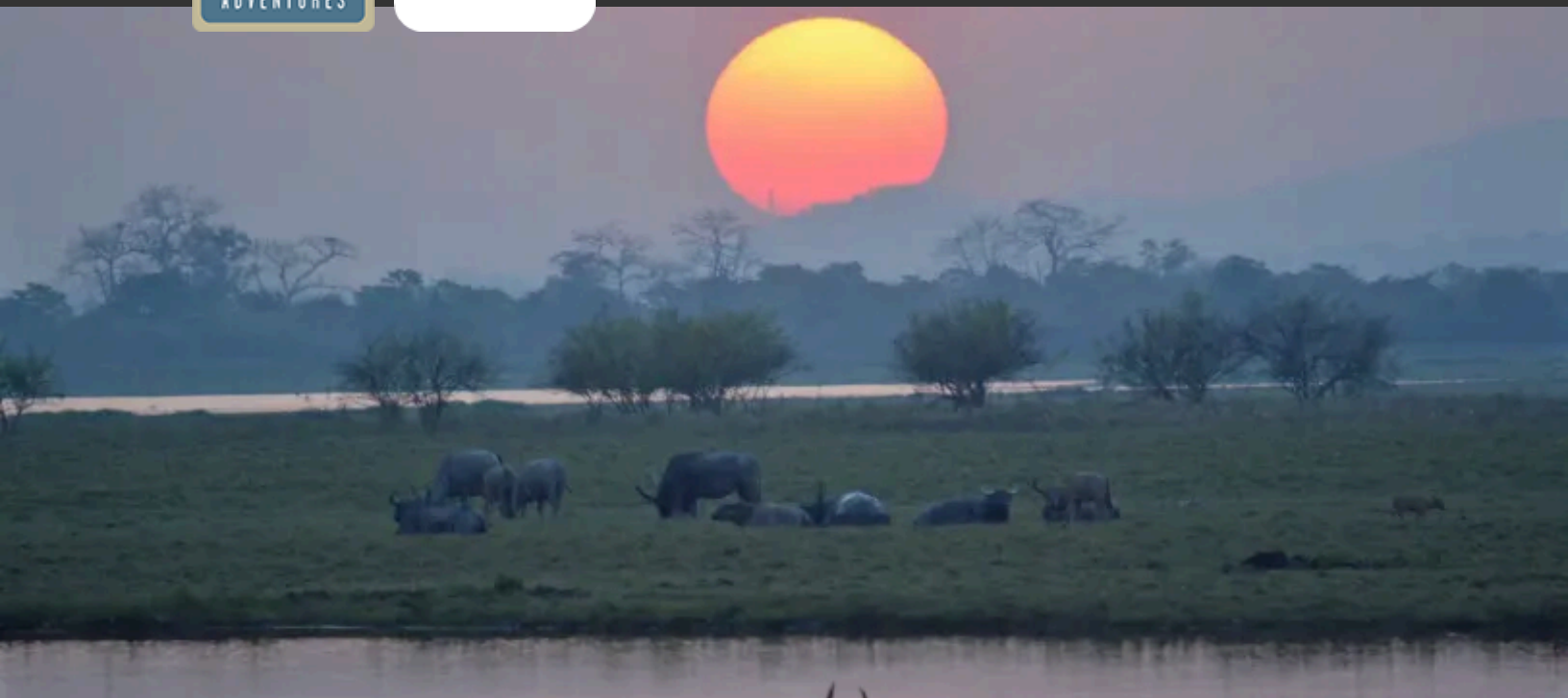
Please note that on Grand India Make It Private departures we require a minimum group size of 6 travelers.

Also, please be aware that your per-person cost on a Make It Private trip will vary depending on the number of travelers in your group and may be as much as 10%-30% higher (ship-based trips may be even higher) than our normal trip cost unless you fill the trip.

This **Make It Private** option is available on nearly every Nat Hab trip for family and friend groups. Call an Adventure Specialist at 800-543-8917 or look for the "Make It Private" icon in the **pricing section** of a trip online at nathab.com to see prices based on your specific group size.



Discovering Our Planet Together



Dates & Pricing Summary:

Prices:
From \$12695
(+Air)

Group Size:
Limited to 11
Travelers

Physical Requirements:
Easy to Moderate

The Grand India Wildlife Adventure Dates, Pricing & Info

An In-Depth Nature Odyssey in Search of Bengal Tigers & Other Rare Wildlife

2025 Departures

Departure	Return	Notes
Apr 17, 2025	Apr 29, 2025	Pair with our Tiger Quest trip*
Apr 24, 2025	May 6, 2025	Habitat Club Pricing Available Pair with our Tiger Quest or Nepal & Bhutan trip*
Dec 15, 2025	Dec 27, 2025	Pair with our Nepal & Bhutan Photo Expedition*
Dec 18, 2025	Dec 30, 2025	Pair with our Nepal & Bhutan Photo Expedition*
Dec 23, 2025	Jan 4, 2026	Pair with our Nepal & Bhutan trip*

2026 Departures

Departure	Return	Notes
Jan 4, 2026	Jan 16, 2026	
Jan 8, 2026	Jan 20, 2026	
Jan 15, 2026	Jan 27, 2026	Pair with our Snow Leopard trip*



Discovering Our Planet Together

Dates & Pricing Summary:

Prices:

From \$12695
(+Air)

Group Size:

Limited to 11
Travelers

Physical Requirements:

Easy to Moderate

Departure	Return	Notes
Jan 22, 2026	Feb 3, 2026	Pair with our Snow Leopard trip or Nepal & Bhutan Photo Expedition*
Jan 27, 2026	Feb 8, 2026	
Feb 1, 2026	Feb 13, 2026	Pair with our Snow Leopard or Nepal & Bhutan trip*
Feb 5, 2026	Feb 17, 2026	
Feb 12, 2026	Feb 24, 2026	Pair with our Snow Leopard or Nepal & Bhutan trip*
Feb 19, 2026	Mar 3, 2026	Pair with our Snow Leopard, Nepal & Bhutan trip or India Tiger Photo Expedition*
Feb 26, 2026	Mar 10, 2026	Pair with our Snow Leopard trip, India Tiger or Snow Leopard Photo Expeditions*
Mar 5, 2026	Mar 17, 2026	Habitat Club Pricing Available Pair with our Nepal & Bhutan or Tiger Quest trip*
Mar 12, 2026	Mar 24, 2026	Pair with our Nepal & Bhutan trip, India Tiger or Snow Leopard Photo Expeditions*
Mar 26, 2026	Apr 7, 2026	Pair with our Snow Leopard, Tiger Quest or Nepal & Bhutan trip*
Apr 2, 2026	Apr 14, 2026	Pair with our Snow Leopard, Tiger Quest or Nepal & Bhutan trip*
Apr 9, 2026	Apr 21, 2026	Pair with our Snow Leopard, Tiger Quest trip or Snow Leopard Photo Expedition*
Apr 16, 2026	Apr 28, 2026	Pair with our Snow Leopard, India Tiger Photo Expedition, or Tiger Quest trip*
Apr 23, 2026	May 5, 2026	Pair with our Snow Leopard or Tiger Quest trip*
Dec 19, 2026	Dec 31, 2026	
Dec 21, 2026	Jan 2, 2027	
Dec 28, 2026	Jan 9, 2027	

2027 Departures

Departure	Return	Notes
Jan 5, 2027	Jan 17, 2027	
Jan 9, 2027	Jan 21, 2027	
Jan 16, 2027	Jan 28, 2027	
Jan 23, 2027	Feb 4, 2027	



Discovering Our Planet Together

Dates & Pricing Summary:

Prices:

From \$12695
(+Air)

Group Size:

Limited to 11
Travelers

Physical**Requirements:**

Easy to Moderate

Departure	Return	Notes
Jan 28, 2027	Feb 9, 2027	
Feb 2, 2027	Feb 14, 2027	
Feb 6, 2027	Feb 18, 2027	
Feb 13, 2027	Feb 25, 2027	
Feb 20, 2027	Mar 4, 2027	
Feb 27, 2027	Mar 11, 2027	
Mar 6, 2027	Mar 18, 2027	
Mar 13, 2027	Mar 25, 2027	
Mar 27, 2027	Apr 8, 2027	
Apr 3, 2027	Apr 15, 2027	
Apr 10, 2027	Apr 22, 2027	
Apr 17, 2027	Apr 29, 2027	
Apr 24, 2027	May 6, 2027	



Discovering Our Planet Together

Pricing

2025 Prices

Mouse over or tap dates above to view prices for specific departure dates.

➤ Trip Price

\$12395 to \$12695 (+internal air)



Internal Air Cost: \$1197 per person (this will be listed separately on our invoicing)

Single Occupancy: For a single room add \$2495. **Click here** to learn how you can avoid the single supplement.

Deposit: \$1500 per person (nonrefundable)

Trip prices are per person based on double occupancy and are given in U.S. dollars.

Please read our Payment & Refund Policy here.

2026 Prices

Mouse over or tap dates above to view prices for specific departure dates.

➤ Trip Price

\$12795 to \$13095 (+internal air)

Internal Air Cost: \$1233 per person (this will be listed separately on our invoicing)

Single Occupancy: For a single room add \$1995. **Click here** to learn how you can avoid the single supplement.

Deposit: \$1500 per person (nonrefundable)

View pricing to take this trip privately with just you and your select travel companions on our Grand India Wildlife Adventure Itinerary.

Trip prices are per person based on double occupancy and are given in U.S. dollars. **Please read our Payment & Refund Policy here.**

2027 Prices

We're still in the process of confirming 2027 pricing. Please contact an Adventure Specialist for more details: 800-543-8917.

Included

➤ **Trip price includes:** Accommodations, services of Nat Hab's professional Expedition Leader(s), local guides, lodge and park staff, all meals from dinner on Day 1 through lunch on final day, some gratuities, still camera fees, airport transfers on Day 1 and final day, all activities and entrance fees, all taxes, permits and service fees.

➤ **Internal air cost includes:** All flights within the itinerary (this will be listed separately on our invoicing).



Not Included

Travel to and from the start and end point of your trip, alcoholic beverages, some gratuities, passport and visa fees, optional activities, items of a personal nature (phone calls, laundry and internet, etc.), airline baggage fees, required medical evacuation insurance, optional travel protection insurance. Note: India requires additional fees for video camera usage in parks, which is not included in your trip fee.

Physical Requirements

Easy to Moderate

In order to participate in this trip you must be able to walk unassisted (without the use of walking aids) at a steady pace for at least two miles over uneven terrain, climb multiple sets of stairs at some accommodations, and climb a short ladder to get into and out of our safari vehicles. Activities include a city walking tour that could be as long as three miles in crowded conditions, walking with luggage through multiple airports, and walking on sometimes dark and uneven paths at our accommodations. Wildlife drives in the parks take place on very rough and bumpy dirt roads with many ruts and potholes, in conditions that are potentially very dusty. Travelers with back problems or other health issues that could be exacerbated by such conditions should take this into consideration. The trip also involves many very early morning starts and long, full days of activities with little downtime, which can be quite tiring. As the national parks we visit are spread over a large area, we are required to fly and drive between several locations, with some drives lasting between 5-6 hours and occurring amid rather chaotic local driving conditions.

On custom or private departures with smaller groups, our ability to accommodate varying levels of physical abilities or interests is limited, since these trips are staffed with a single Expedition Leader who may be assisted, pending availability, by local guides.



Important Information About This Trip

Wildlife Encounters

Our guests choose a trip to India for encounters with the country's unique wildlife. While the nature experiences here are exciting, there is a fundamental difference between the wildlife experience in the Indian jungle and a typical African safari. At times, guests who are lured to India by tourist brochures promising "tiger safaris" can be disappointed to see fewer animals than they expected, or at least fewer than they might normally see in Africa. It is not that the surviving jungles are thinly populated with wildlife, but, similar to places like Costa Rica where the forest vegetation is dense, animals have mastered the art of camouflage in thick cover and can be extremely difficult to spot. We design our itineraries to capitalize on the best places to see tigers. But various factors can affect potential sightings, including inclement weather, which creates small pockets of water that allow the animals to remain hidden in the forest, rather than being driven into the open to drink. There is no doubt that India's nature, and the forests Kipling immortalized, offer wondrous discoveries. The secret for visitors lies in the assistance of expert guides – and we have been told that we have the best! – as well as knowing what to expect, and in understanding that the privilege of stepping into a wild natural realm is a reward in itself.

The Seasons

There are many advantages to traveling at the time of year that we operate our India adventure. While it is true that tiger sightings do take a while to fully pick up after the long monsoon off season (April-September), things begin to change from mid-November onwards. Water begins to evaporate from deep forest pools and streams, the vegetation begins to dry up and, most importantly, tiger activity reaches a high, including mating, which mostly occurs in December and January. During this season, tigers are consistently on the move and walk the game trails extensively, which makes sightings exciting. They are also at their most vocal as they call out to mates and spray and mark their territories, stepping up their breeding efforts. During fall and early winter season, tigers (and many other animals) grow a brilliant winter coat that makes them look their most alluring. Other species, like the hardground swamp deer, also enter their rut in December and are extremely vocal with their rutting bugle. This winter season is definitely also the best time for birdwatching in India's tiger habitats, as large numbers of palearctic migrants arrive. The landscapes through which we travel is also stunning in winter – frost on the grasslands and mist rising til late in the morning create an ethereal atmosphere, shafts of sunlight filter through the canopy and look almost as if they were solid... These settings help create magical images of even "ordinary" jungle animals. When it comes to weather, winter is the most pleasant time of the year to travel through India. Cooler temperatures provide a comfortable experience, and the previous season's rains result in lush green scenery, though, of course, that thick junglescape can impede sightings.

Safari Vehicle Routes & Seating Allocation

Rather different than in nearly every other country we travel to, in India the driving routes in national parks are pre-assigned and must be followed. In most parks this is generally not a problem, but when searching for tigers this can be frustrating as they simply may not be visible on a given route on a given day. Our hope is that we are able to utilize different routes on different days. However, the park service allocates routes at random for each vehicle, so there is no guarantee that vehicles will get a different route for each wildlife drive. We understand that one of the goals for your journey is to view tigers, and but please understand that there is a chance that the vehicle to which you are assigned could take the same route multiple times. Thank you for participating in this adventure knowing that this may be the case.

Also, on rare occasions you may see film crews during your time inside parks. These crews have special permits in order to film inside park boundaries and, as a result, they do enjoy certain advantages that a regular tourist does not, such as spending the entire day inside the park and having access to places where others cannot go.



Discovering Our Planet Together

Indian park regulations are also extremely strict with regard to seating arrangements on wildlife drives. Requirements dictate that guests be confirmed in specific vehicles upon booking, well in advance of the departure date, and we are unable to change vehicles while we are exploring each park. To the best of our ability, we attempt to ensure that guests who are traveling with a partner or friend will have seats together during wildlife drives. Because couples or friends are booked together in the same vehicle and are unable to split up during drives, it may mean that in some instances, certain vehicles will contain fewer guests than others.

It is also important to understand the limitations based on available vehicle space. Each open safari vehicle has two front seats and two rows of bench seats. Regulations require that the front two seats be occupied by a park ranger and registered driver. Our Expedition Leader and local guides are allowed more flexibility and will switch among vehicles for each drive so that all guests are able to spend equal time with them. However, this means that as our Expedition Leaders and local guides rotate vehicles, there may be times when there will be three people (two guests and one Expedition Leader or local guide) to a row—our Expedition Leader/local guides may be required to sit in the rear left seat of the vehicle.

Please know that while there are indeed limiting factors to the tiger viewing experience in India, we have taken great pains to ensure that this special India tiger and wildlife safari with Nat Hab provides the best viewing experience possible.

Mandatory Insurance

Since the areas we travel to on this trip are remote and wild (that's why we go there!), we require medical evacuation insurance for our guests' safety. If you decline the medical evacuation insurance coverage offered by Natural Habitat, we request that you send us documentation of the independent coverage you have selected. We will add the cost of a medical evacuation policy to your tour invoice until you provide our office with proof of coverage including your insurance company's name, contact number and your individual policy number. Thank you for understanding that our policy exists exclusively in the interest of our guests' safety.

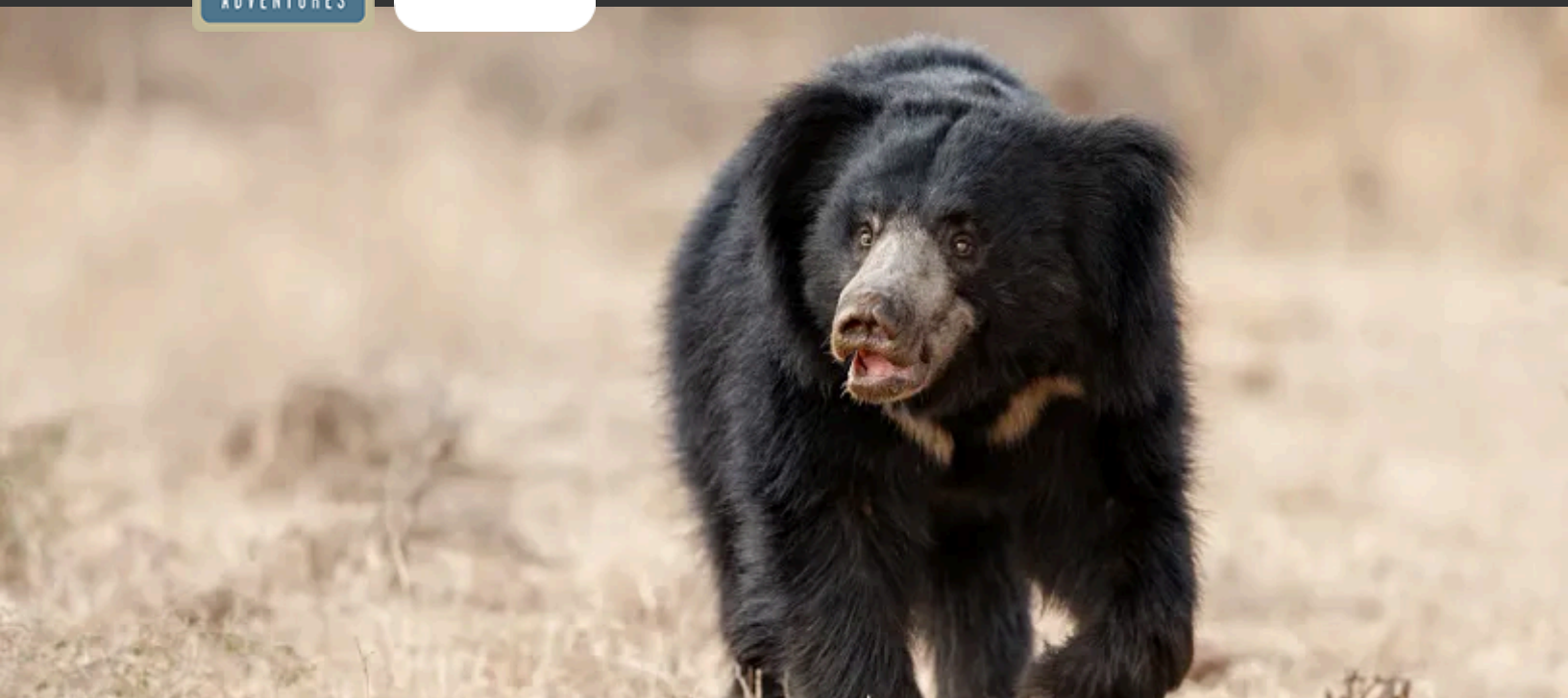
Getting There & Getting Home

Arrive in Delhi by 9 am on Day 1 in order to participate in a guided city tour beginning at approximately 1 pm. You are free to depart Delhi any time after 9 pm on the final day.

We can best serve you if our Natural Habitat Adventures Travel Desk makes your reservations, as we are intimately familiar with the special requirements of this program and can arrange the most efficient travel. Please call us at 800-543-8917. Note that while we offer you the best possible rates available to us on airfare and additional nights' accommodations, you may find special web rates or better fares online.



Discovering Our Planet Together



Extension Details:

Agra & the Taj Mahal
\$2395

Wild & Ancient Himalaya: Nepal & Bhutan
\$13895

Land of the Snow Leopard
\$10995

Snow Leopard Quest Photo Expedition
\$12895

The Grand India Wildlife Adventure Extensions

An In-Depth Nature Odyssey in Search of Bengal Tigers & Other Rare Wildlife



Agra & the Taj Mahal

Extend your India wildlife adventure with this cultural journey to the fabled Taj Mahal and Agra Red Fort, elaborate monuments to the splendors of the Mughal imperial age.

\$2395



Wild & Ancient Himalaya: Nepal & Bhutan

Explore mountain heights and jungle lowlands on this soulful journey through the cultural and wildlife treasures of two neighboring Himalayan nations—including rhino tracking in Chitwan National Park.

\$13895 (+air)



Land of the Snow Leopard

On a winter adventure in far-north India, join a quest to view one of the world's most elusive cats. Stay in the very midst of its high alpine habitat at our private, deluxe ecolodge in a small village in Ladakh.

\$10995 (+air)



Discovering Our Planet Together



Snow Leopard Quest Photo Expedition

In the company of expert spotters, track the world's most elusive big cats in their native Himalayan habitat on our small-group winter photo safari to the remote alpine heights of Ladakh in far-north India.

\$12895 (+air)



Natural Habitat & WWF: Discovering Our Planet Together

Natural Habitat Adventures • PO Box 3065 • Boulder, CO USA 80307

USA & Canada: 800-543-8917 • International: 303-449-3711

© 2025 Natural Habitat Adventures

WWF's membership travel program is operated by Natural Habitat Adventures (Nat Hab). To date, Nat Hab has provided more than \$6 million in support of WWF's mission and will continue to give 1% of gross sales plus \$175,000 annually through 2028. WWF® and ©1986 Panda Symbol are owned by WWF. All rights reserved.