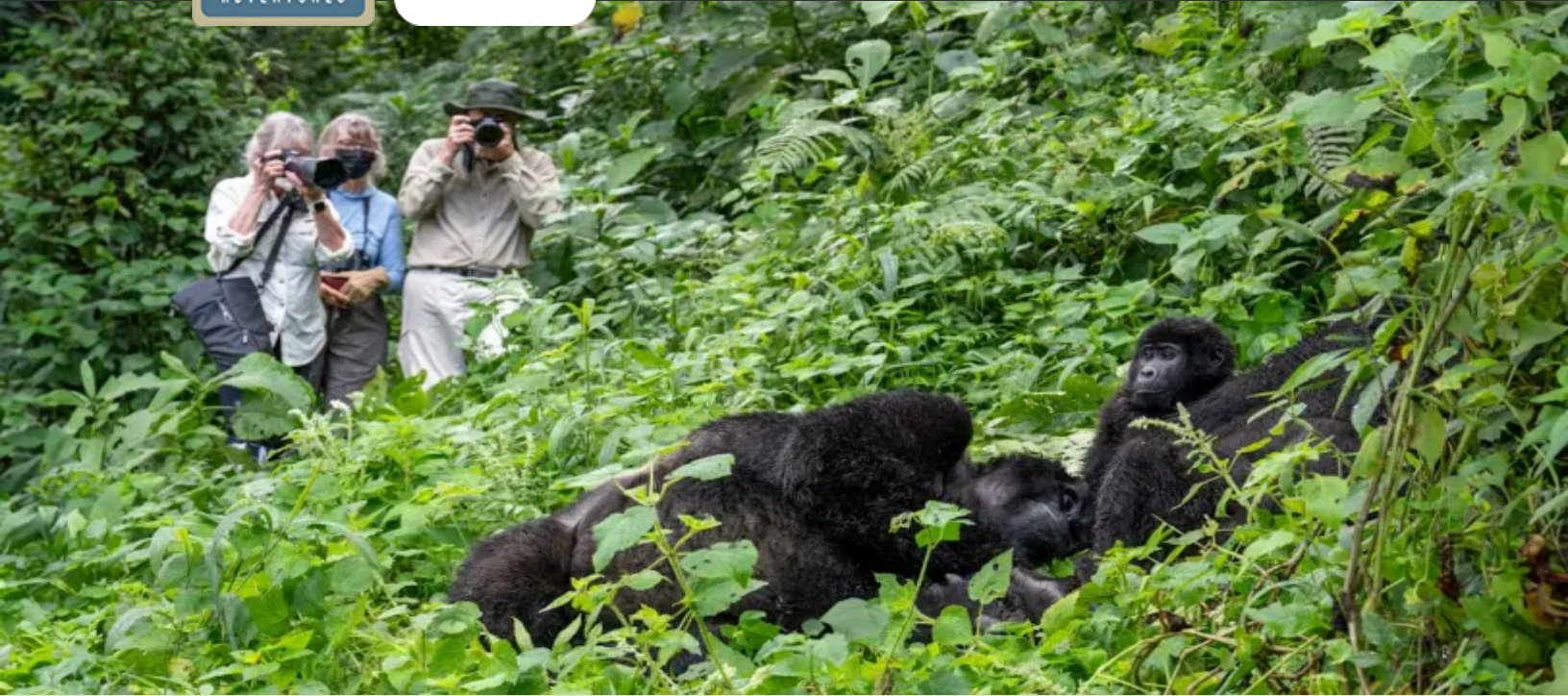




Discovering Our Planet Together



# Ultimate Gorilla Photo Expedition

*A Primate Extravaganza! Photograph Gorillas in Uganda & Rwanda, Plus Chimpanzees & Golden Monkeys*



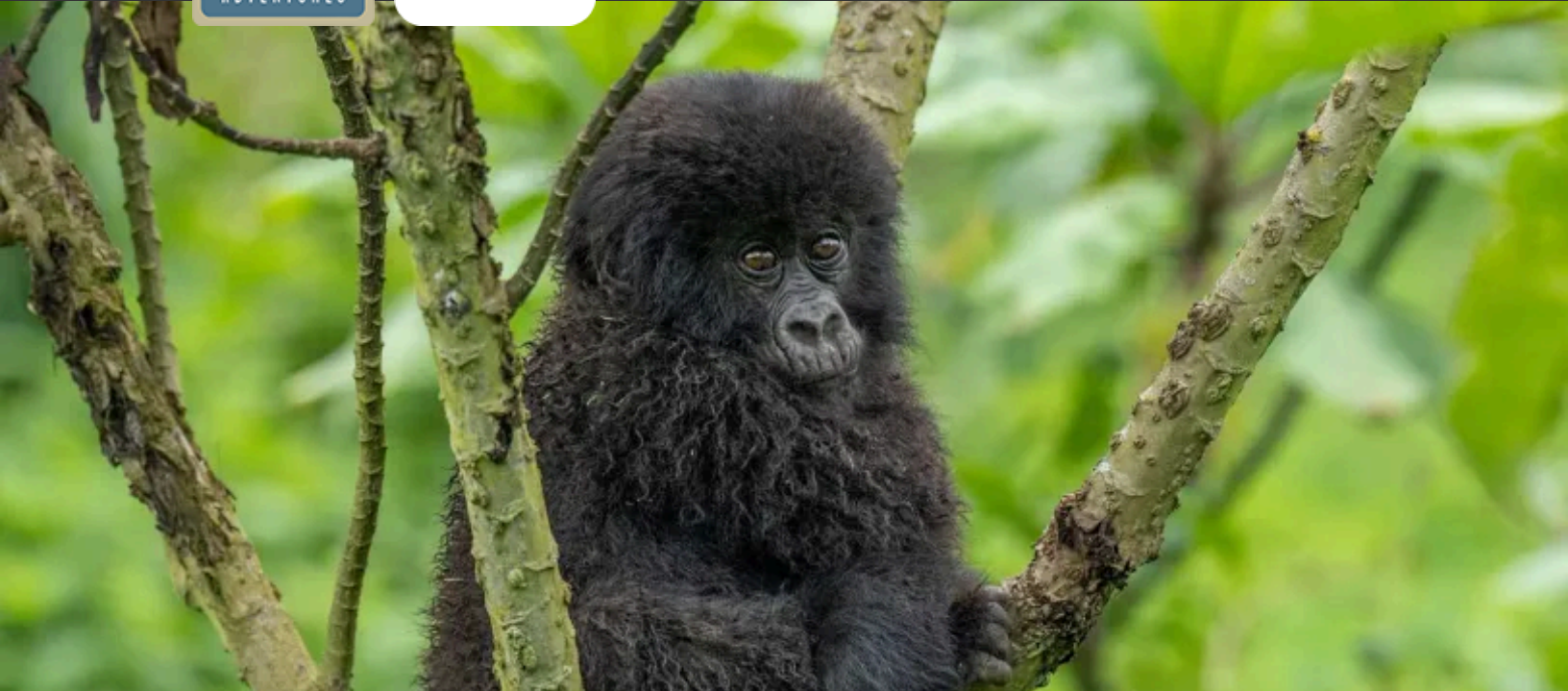
## Table of Contents:

---

<b>Trip Overview</b> .....	<b>3</b>
<b>Trip Itinerary</b> .....	<b>4</b>
<b>Trip Accommodations</b> .....	<b>9</b>
<b>What Makes Nat Hab Different?</b> .....	<b>11</b>
<b>Make It Private</b> .....	<b>13</b>
<b>Dates &amp; Pricing Information</b> .....	<b>14</b>
<b>Trip Extensions</b> .....	<b>19</b>



Discovering Our Planet Together



Trip Details:

**Days**  
13 Days / Year-Round

**Price**  
From \$17995 (+Air/permit)

**Physical Requirements**  
Moderate to Difficult

# Ultimate Gorilla Photo Expedition

**A Primate Extravaganza! Photograph Gorillas in Uganda & Rwanda, Plus Chimpanzees & Golden Monkeys**

For the avid wildlife photographer, few shots are more prized than a portrait of a mountain gorilla. The depths of its liquid brown eyes hold a mystique that words can't capture. From the hulking silverback as he sits and surveys his troop to agile youngsters rollicking in the branches, a gorilla family offers endless wonder and delight for photographers. And our primate photo safari is matchless in helping you get the images that capture that emotion. Four separate gorilla treks offer multiple opportunities to spend time with these creatures so like us, as you document a range of behavior, antics and contemplative moments. We also photograph chimpanzees in Uganda's Kibale Forest and golden monkeys in Volcanoes National Park in Rwanda, rounding out your primate portfolio—plus classic African wildlife and the Victoria Nile in Murchison Falls National Park.

## Trip Highlights

**Maximize your photo opportunities with the last of the world's mountain gorillas on four different gorilla-tracking expeditions—two each in Uganda and Rwanda**

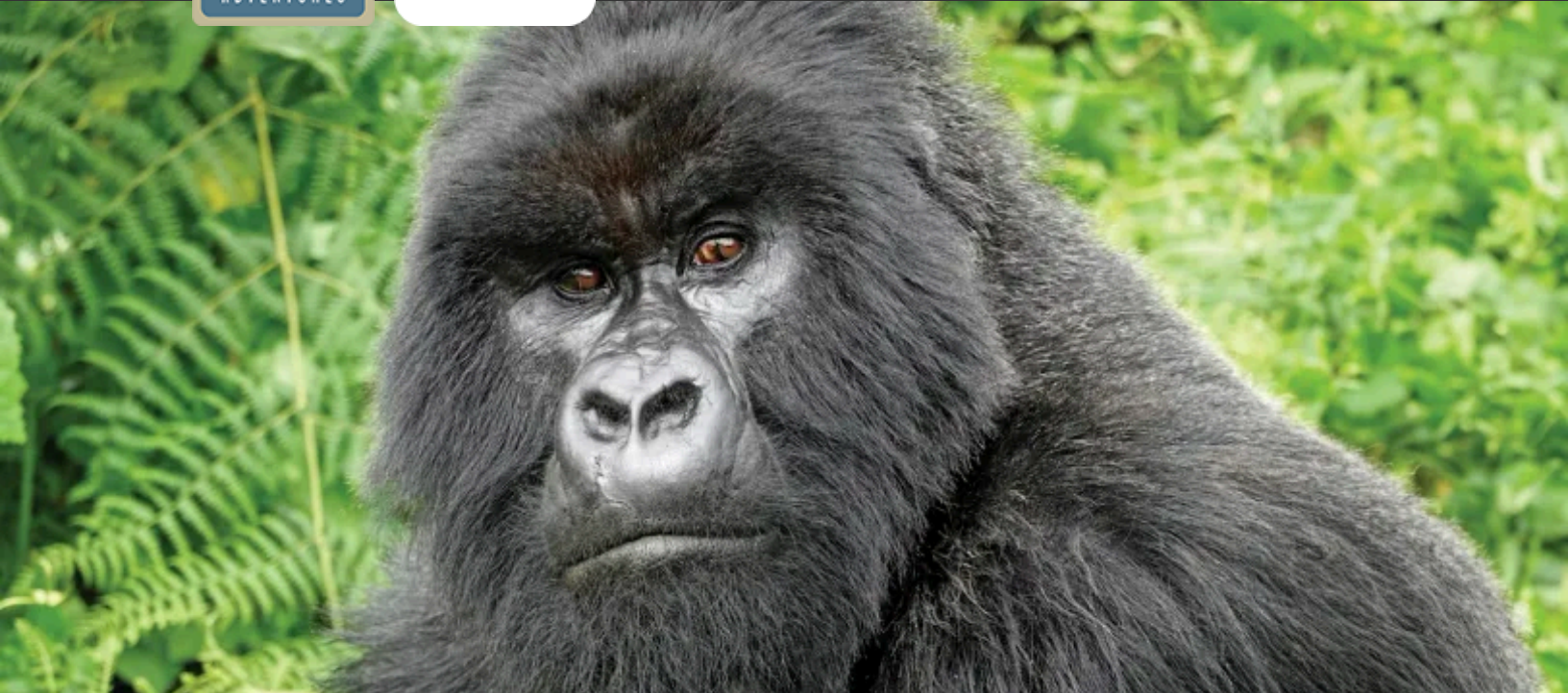
**Chimps are arguably as charismatic as their gorilla cousins, and we enjoy time with them in front of our lens—along with golden monkeys and colobus monkeys**

**Get striking landscape and wildlife shots at Murchison Falls, Lake Albert and the Victoria Nile, where plains game, predators, hippos, crocodiles and birds abound**





Discovering Our Planet Together



## Itinerary At A Glance

### Day 1

Entebbe, Uganda

### Day 2

Ziwa Rhino Sanctuary / Murchison Falls National Park—Private Bush Camp

### Day 3

Murchison Falls National Park—Private Delta Cruise & Game Drive

### Day 4

Chimp Trekking in Budongo Forest Reserve / Private Nile Cruise

### Days 5 & 6

Murchison Falls Game Drive / Kibale National Park—Chimpanzee Trekking

### Day 7

Bwindi Impenetrable National Park

### Days 8 & 9

Gorilla Trekking in Bwindi

## Ultimate Gorilla Photo Expedition Itinerary

**A Primate Extravaganza! Photograph Gorillas in Uganda & Rwanda, Plus Chimpanzees & Golden Monkeys**

### Day 1: Entebbe, Uganda

Arrive in Entebbe and transfer to our hotel. If time permits, you may wish to visit the famous Entebbe Botanical Gardens nearby. Established in 1902, the gardens contain a diverse plant collection from tropical, subtropical and temperate zones. Also home to a wide variety of birds, the gardens offer an excellent introduction to Uganda's avian species. Vervet and black-and-white colobus monkeys are commonly spotted here as well. Meet your Expedition Leader at a welcome dinner this evening, where we'll have a full orientation to our primate photography extravaganza.







## Itinerary At A Glance

### Day 10

Volcanoes National Park, Rwanda

### Days 11 & 12

Gorilla Trekking in Volcanoes National Park

### Day 13

Golden Monkey Trek / Depart

## Day 2: Ziwa Rhino Sanctuary / Murchison Falls National Park—Private Bush Camp

This morning we make a scenic drive to Murchison Falls National Park, stopping en route at Ziwa Rhino Sanctuary to track this endangered species. The only location in Uganda where we have an opportunity to capture images of endangered rhinoceros, Ziwa rounds out our chance to photograph the full Big Five on our photo safari! Six southern white rhinos were introduced to Ziwa back in 2006, and since then, 26 successful births have brought the number to 32.

Continue to our destination of Murchison Falls National Park, covering almost 1,500 square miles of wild and varied terrain at the northern end of the Albertine Rift Valley. Diverse habitats—including savanna, acacia forest, Borassus palm forest, riverine woodlands and papyrus swamp—support a wide variety of wildlife. The park is bisected by the Victoria Nile, a turbulent stretch of whitewater forced through a narrow gap to plunge 140 feet over a sheer wall, creating a thunderous roar. While Murchison Falls is the most powerful waterfall in the world, the calm stretch of river below offers superb wildlife photography, with elephant, giraffe, buffalo, hippo and Nile crocodile frequently in view. Launch trips to the base of the falls and Lake Albert Delta offer outstanding bird photography, with a chance to see rare shoebill storks—a coveted sighting that draws birders to Uganda for this reason alone. The 1951 film *The African Queen*, starring Humphrey Bogart and Katharine Hepburn, was filmed on Lake Albert and the Nile within the park. Other notable figures who have visited here include Theodore Roosevelt, Winston Churchill and Ernest Hemingway.

We spend the next three nights in peaceful seclusion at Nat Hab's private Murchison Bush Camp in the heart of this wildlife mecca. With just eight tents, the low-impact camp is set seasonally in a remote area with unsurpassed proximity for wildlife photography—our location permits us to be first into the park each morning, far sooner than guests staying at outlying lodges. Enjoy total solitude and the safari ambience of a bygone era, with canvas tents and lantern-lit dining.



### **Day 3: Murchison Falls National Park—Private Delta Cruise & Game Drive**

Murchison Falls National Park is Uganda's richest wildlife enclave, with 144 mammal species including chimpanzees and Rothschild's giraffe, Uganda's largest population of Nile crocodiles among its 51 reptile species, and 550 bird species including shoebills, dwarf kingfisher, Goliath heron, great blue turaco and winged gray warbler. We look for a wide variety of animals to photograph today, first on a private cruise in the Lake Albert Delta, where the Victoria Nile enters this swampy wetland as a sluggish stream, threading its way among small islands in a series of tributaries. The alluvial marsh is a designated Important Bird Area and one of the best birding locations in Africa, especially for aquatic birds—keep an eye out for African fish eagles among the 75+ species of waterbirds found here. In the distance, the Congo mountain ranges rise in undulating forested ridges on the horizon. After our cruise, we're met by our safari vehicles for an afternoon game drive. We scout for a great plethora of animals that could include buffalo, elephant, giraffe, Uganda kob, Jackson's hartebeest, oribi, lion, leopard and side-striped jackal.

### **Day 4: Chimp Trekking in Budongo Forest Reserve / Private Nile Cruise**

This morning we set off to go chimpanzee trekking in Budongo Forest Reserve. Located on the escarpment east of Lake Albert, this semi-deciduous tropical rainforest is noted for its large chimp population of approximately 600 individuals, and its native mahogany trees, with some old-growth specimens as tall as 200 feet still standing. The forest is also home to 360 bird species, some of which are endemic to this localized region, including the yellow-footed flycatcher. Research on Budongo's chimpanzees began in the early 1960s, with the establishment of a forest reserve that later became the Budongo Conservation Field Station. Among a trio of pioneer researchers in the 1960s was Jane Goodall. This afternoon, we take another private boat cruise to photograph wildlife along the river channels. In addition to the excitement of seeing scores of hippos and crocodiles, we also have good chances to spot elephants, giraffe, baboons, warthogs, and of course, countless beautiful birds. Our journey includes a voyage to the base of Murchison Falls, with a view into the Devil's Cauldron, the foaming chaos created by the turbulent Nile River as it plummets over the cliff. We also pass the spot where Hemingway's plane crashed when the celebrated author visited Uganda in 1954.





### **Days 5 & 6: Murchison Falls Game Drive / Kibale National Park—Chimpanzee Trekking**

After a last morning game drive in Murchison Falls National Park, transfer to the airstrip for a scenic flight over Uganda's verdant highlands to reach Kibale National Park. This equatorial rainforest reserve is home to one of the world's most important primate populations, including 1,300 chimpanzees. We go in search of them on a trek with local trackers who help us spot chimps and monkeys, with plenty of unhurried time to photograph their entertaining antics. We may also see up to a hundred different bird species on a wetland sanctuary walk. An optional hike to one of the crater lakes near our lodge offers magnificent landscape shots from the rim. After a full and exhilarating day, settle into our thatched cottages at Ndali Lodge overlooking the ancient crater.

### **Day 7: Bwindi Impenetrable National Park**

Depart for the local airstrip this morning for our flight to Kihiki, gateway to Bwindi Impenetrable National Park and our gorilla-trekking base in the rainforest. The park, whose name references the dense, tangled forests it encompasses, is home to roughly half the world's remaining mountain gorillas. Though best known for its outstanding gorilla viewing, it also provides refuge to chimpanzees, monkeys, elephants and various small antelope. Bwindi is also a top Uganda birding destination, with 23 of Uganda's 24 Albertine Rift endemics, including threatened species such as African green broadbill and Shelley's crimson wing.

### **Days 8 & 9: Gorilla Trekking in Bwindi**

Within the World Heritage Site that is Bwindi Impenetrable Forest, discover one of wildlife photography's peak experiences: a visit with wild gorillas in their natural habitat. Just over a thousand mountain gorillas remain in the world, and Bwindi is home to about 460—a population that is growing but still threatened by increasing human population and habitat loss in the surrounding area. Our safari includes two treks to spend time among the gorillas, offering the chance to capture astounding photos at very close range. Early in the morning, we head into the dense rainforest on a quest to locate one of the habituated family groups. Our local guides are expert trackers, reading signs of the gorillas' recent presence in the undergrowth. We can't predict how long it will take to locate them, but finally, we hear and see a gorilla family, watching enrapt as they sit among the trees, chewing leaves, babies clinging to mothers' backs, juveniles swinging from branches, and a big male silverback surveying it all. It's hard to tell who is more intrigued with the other, the gorillas or us! If time permits, we'll visit Conservation Coffee, a local co-op of farmers who grow, process and roast beans to sell at a premium to benefit gorilla conservation. We may have a chance to walk through the coffee fields, pick some beans, and see firsthand how this sustainable community enterprise unfolds.



### **Day 10: Volcanoes National Park, Rwanda**

Leaving Bwindi, we descend to the Rift Valley floor, capturing scenes of local life that unfold along the way as we drive past villages and coffee plantations. Entering Rwanda, continue to Parc National des Volcans—Volcanoes National Park—named for the string of jungle-draped volcanoes inside its borders. The park is rich mosaic of montane ecosystems, with thick forests and steep-sided mountains rising to nearly 15,000 feet above sea level. Within the Virunga Range, the park is one of three areas where mountain gorillas reside. Our destination, Five Volcanoes, is a deluxe boutique lodge that provides an ideal gorilla trekking base for the next three nights. Set seamlessly into its lush surroundings with panoramic vistas of the mountains beyond, the lodge is just a short drive from the national park headquarters, where all gorilla trekking expeditions depart.

### **Days 11 & 12: Gorilla Trekking in Volcanoes National Park**

After breakfast, we drive to park headquarters for a briefing from our guides. This area is where Dian Fossey made her groundbreaking studies on mountain gorillas before she was killed in 1985, and her grave is nearby. Several habituated gorilla families live in the park, and we learn how important our ecotourism presence is to their survival before trekking in search of them. We set out early each morning along paths into the forest, eventually leaving trails behind as our trackers follow signs that lead them to the gorillas' current location. The altitude is above 8,200 feet, so while our pace is unhurried, the hike is tiring, lasting from 30 minutes to several hours. But what a reward: our goal is a chance to sit with a specific gorilla family that has become accustomed to visitors and is nonchalant about human contact—and we enjoy a full hour in their presence, getting photos we could only dream about previously.

### **Day 13: Golden Monkey Trek / Depart**

While gorillas are the highlight, even without them Volcanoes National Park would be fascinating. Its varied ecosystems shelter elephant, buffalo, giant forest hog, bush pig, bushbuck, duiker and spotted hyena, as well as a habituated group of endemic and highly endangered golden monkeys, which are our focus today. We spend the morning on a quest for these agile entertainers that swing through the forest canopy and delight us with their antics. Our environs are also home to 178 bird species, including at least 29 endemics found only in the Rwenzori and Virunga mountains. This afternoon, depart for Rwanda's capital of Kigali. Visit the Kigali Genocide Memorial, a deeply moving tribute to the 800,000 people killed in Rwanda's 1994 genocide. Following a farewell lunch, our gorilla safari comes to a close as we transfer to the airport for departing flights.





Discovering Our Planet Together



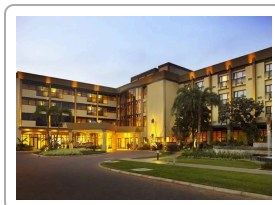
### Accommodation Details:

- Kigali Serena Hotel
- Five Volcanoes Boutique Hotel
- Buhoma Lodge
- Ndali Lodge
- Murchison Bush Camp
- Hotel No. 5

For detailed descriptions, visit [nathab.com/africa/uganda-rwanda-gorilla-photo-expedition/accommodations](http://nathab.com/africa/uganda-rwanda-gorilla-photo-expedition/accommodations)

## Ultimate Gorilla Photo Expedition Accommodations

A Primate Extravaganza! Photograph Gorillas in Uganda & Rwanda, Plus Chimpanzees & Golden Monkeys



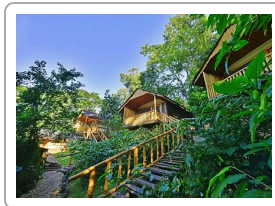
### Kigali Serena Hotel

On one of Kigali's most attractive boulevards, this relaxed, elegant 5-star hotel has air conditioning, a pool, multiple restaurants and a friendly atmosphere. Newly renovated rooms showcase pan-African style.



### Five Volcanoes Boutique Hotel

Surrounded by lush gardens with views of the volcanic Rwenzori range, this new lodge offers deluxe accommodations near Volcanoes National Park, home to Rwanda's endangered mountain gorillas.



### Buhoma Lodge

This inspiring ecolodge, with eight spacious chalets overlooking a rainforest panorama, provides an ideal location for gorilla treks into Bwindi Impenetrable National Park, which begin from the premises.



### **Ndali Lodge**

Dramatically perched on the rim of an extinct volcano that has filled with water to become scenic Lake Nyinambuga, this thatched lodge enjoys panoramic views over the Rwenzori Mountains.



### **Murchison Bush Camp**

This exclusive mobile camp is private for Nat Hab guests, placed optimally for wildlife viewing and first entrance to Murchison Falls National Park, before visitors from outlying lodges arrive.



### **Hotel No. 5**

This stylish boutique hotel tucked within Entebbe's leafy suburbs features luxurious accommodations surrounding a lush lawn, palm-studded gardens and shaded swimming pool.





## Why is This the Ultimate Primate Photo Safari?

Few moments with wildlife are as riveting as those we experience on our Ultimate Gorilla Safari. And no safari we know of is designed as meticulously to offer you the best chance to get captivating photographs of those moments. Take a look at all we've included to ensure the ultimate photography encounters with gorillas, chimpanzees and other African wildlife:

1

### You Won't Find a More In-Depth Primate Itinerary

Many gorilla safaris give you just one day in the rainforest to track these reclusive animals. But we include four separate gorilla tracking expeditions—two days each in Uganda and Rwanda—to maximize your opportunities for incredible photos. Add wild chimpanzee tracking in Kibale and Budongo forests, plus a chance to see golden and colobus monkeys (and others), and you've got the most comprehensive primate safari Africa has to offer.

2

### Photograph a Full Range of African Wildlife

While primates are our focus, we include other wildlife viewing as well, including a chance to spot the Big Five. Look for elephant, buffalo, zebra, giraffe, lion, leopard, crocodile, hippo, and even rhinos on our visit to a rhinoceros sanctuary. Our diverse itinerary features the best of both: primates plus general wildlife viewing on forest treks, 4x4 drives over the savanna, and private boat cruises.

3

### In-Depth Exploration of Murchison Falls National Park

Capture the Victoria Nile plunging over a sheer cliff at Murchison Falls, and make multiple safaris in the park to photograph abundant wildlife, including some of the best birdlife in Africa. What's more, our private bush camp offers immediate proximity to the park—we get there well before groups from the outlying lodges, where most other visitors stay.

4

### Two Private Boat Safaris

Cruise the Victoria Nile and Lake Albert Delta by private boat, photographing abundant wildlife on the banks and in the water, and get exciting shots at the base of Murchison Falls where it creates a turbulent boil in the Devil's Cauldron.

5

### A Window Seat for Every Photographer

Get the best possible photos with a guaranteed window seat for every traveler on board the highest-quality safari trucks. Our state-of-the-art vehicles have features such as multiple roof hatches to enhance viewing. There's no way around it—East Africa's mountainous regions have some pretty rough roads—so full 4-wheel-drive capacity with a top-quality suspension system is a key feature of our vehicles.



6

### Unique Accommodations Offer Ambience & Seclusion

Where you stay on safari makes a big difference to your overall experience. That's our focus is small, intimate camps and lodges in nature. We choose our locations for their scenic settings and proximity to wildlife—in contrast to large lodges in busier areas where hundreds of tourists congregate.

7

### No Tight Weight Limits—Bring the Equipment You Need!

Uganda and Rwanda are among the most beautiful countries in Africa. Our itinerary includes scenic drives between safari locations, offering a chance to photograph the countryside and scenes of rural life. And, crucially important, driving allows you to take more photography equipment, avoiding restrictions on small planes with tight weight limits. Because we do a point-to-point trip from Entebbe to Kigali, we don't do any backtracking, unlike many gorilla itineraries—which means more diversity en route.

8

### Our Nat Hab Expedition Leader is By Your Side Throughout Your Safari

Your trip is led by an Expedition Leader who is both an outstanding wildlife photographer and professional naturalist guide. No matter your ability level, you'll get all the tips and coaching you need to take your images to the next level, from shot composition to handling low light in the rainforest to follow-up editing. Our guides are also privy to resources from WWF's top scientists, enhancing their knowledge even further. Check out our Expedition Leader bios and traveler comments.

9

### Our Quality-Value Guarantee Ensures an Outstanding Photo Expedition

With Natural Habitat Adventures, you receive our exclusive guarantee, which clearly states that we will meet the lofty expectations we set in our promotional materials. To our knowledge, this is the most ambitious guarantee made by any adventure travel company. Read our important promise for yourself!

10

### Feel Good About Your Carbon-Neutral Journey

We care deeply about our planet, as we know you do. When you travel with us, the carbon emissions from your trip are 100% offset—including your round-trip flights from home. Natural Habitat Adventures has been the world's first carbon-neutral travel company since 2007.

11

### Natural Habitat Adventures is WWF's Travel Partner

Because of our commitment to environmentally friendly travel, as well as the exceptional quality of our adventures, World Wildlife Fund—the world's leading environmental conservation organization—has named Natural Habitat Adventures as its worldwide travel partner, a designation that makes us exceedingly proud!





Discovering Our Planet Together

## Design Your Own Custom Photo Expedition

Travel privately, exclusively with your immediate family, multi-generational family or group of friends. Our in-house safari experts can help you design your own custom Africa itinerary—their expertise is second to none! **Click here** to request more info.

---

This **Make It Private** option is available on nearly every Nat Hab trip for family and friend groups. Call an Adventure Specialist at 800-543-8917 or look for the "Make It Private" icon in the **pricing section** of a trip online at nathab.com to see prices based on your specific group size.



Discovering Our Planet Together



### Dates & Pricing Summary:

**Prices:**  
From \$17995  
(+Air/permit)

**Group Size:**  
Limited to 12  
Travelers

**Physical Requirements:**  
Moderate to  
Difficult

## Ultimate Gorilla Photo Expedition Dates, Pricing & Info

A Primate Extravaganza! Photograph Gorillas in Uganda & Rwanda, Plus Chimpanzees & Golden Monkeys

### 2025 Departures

Departure	Return	Notes
Jun 4, 2025	Jun 16, 2025	
Aug 7, 2025	Aug 19, 2025	
Sep 26, 2025	Oct 8, 2025	
Nov 17, 2025	Nov 29, 2025	

### 2026 Departures

Departure	Return	Notes
Jan 16, 2026	Jan 28, 2026	
Jun 4, 2026	Jun 16, 2026	
Aug 8, 2026	Aug 20, 2026	
Oct 4, 2026	Oct 16, 2026	



## Discovering Our Planet Together

Departure	Return	Notes
Nov 3, 2026	Nov 15, 2026	





## Pricing

2025 Prices

- **Trip Price**  
\$17995 to \$18495 (+permits)



**Permit Fees:** Gorilla and chimp permits are an additional \$5200 per person. Rarely, due to factors outside our control, trekking permit fees sometimes increase prior to departure.

**Internal Air:** \$1146

**Single Occupancy:** For a single room add \$2995. **Click here** to learn how you can avoid the single supplement.

**Deposit:** \$1500 per person (nonrefundable)

Trip prices are per person based on double occupancy and are given in U.S. dollars.

**Please read our Payment & Refund Policy here.**

## Included

- **Trip price includes:** Accommodations, services of Nat Hab's professional Expedition Leader(s), local guides, camp staff, gorilla trackers and porter, all meals from dinner on Day 1 to lunch on final day, some gratuities, airport transfers on Day 1 and final day, all activities and entrance fees, all taxes and service fees.
- **Permit fee includes:** Four mountain gorilla treks, two chimpanzee treks and a golden monkey trek.

## Not Included

Travel to and from the start and end point of your trip, alcoholic beverages, some gratuities, passport and visa fees (if any), optional activities, items of a personal nature (phone calls, laundry and internet, etc.), airline baggage fees, airport and departure taxes (if any), required medical evacuation insurance, optional travel protection insurance.



## Physical Requirements

### *Moderate to Difficult*

Trekking in search of mountain gorillas is a strenuous activity. This challenging hike through the rainforest to locate the gorillas usually takes between two and five hours, but it can be as short as 15 minutes or as long as eight hours (on infrequent occasions, we've had a few treks take even longer than that). Travelers must be prepared for a full day outdoors in humid or occasionally rainy conditions, as the exact distance to locate the gorillas is impossible to determine ahead of time. The terrain is often uneven as we traverse the forest floor and usually involves a gradual ascent, but we will travel at a pace to accommodate all hikers with a designated porter to assist each traveler. Travelers are not required to participate in all activities and are welcome to forego any portion of the program, but in order to take full advantage of the itinerary, and in order to view the primates, guests must be able to participate in the hikes. Travelers should be aware that if they turn around due to fatigue, illness or any other reason, the remainder of the group, including the Expedition Leader, will go on. The returning traveler will be escorted by a local guide.

Additionally, wildlife and nature drives pose a particular type of physical demand on the body, as they require long hours of sitting and take place over terrain that is often very rough and bumpy, including dirt roads with many ruts and potholes. Travelers with back or neck problems, or other health issues that could be exacerbated by such conditions, should take this into consideration. Days spent on safari are often long, as mornings typically start before daybreak and evening meals are served after sundown. Safari accommodations and vehicles are not climate-controlled and, depending on the season, temperatures can range from quite cold to extremely humid or hot, so it is critical that travelers come prepared.

On custom or private departures with smaller groups, our ability to accommodate varying levels of physical abilities or interests is limited, since these trips are staffed with a single Expedition Leader who may be assisted, pending availability, by local guides.

## Important Information About This Trip

This trip is designed for those seeking exposure to the range of habitats of the mountain gorilla. NHA has been visiting gorillas in Africa since 1989, and this immersive itinerary, which features four separate gorilla treks, is the pinnacle of our primate trips. We ask our guests to understand that accommodations in this region are not, collectively, of the standard found in other more established safari countries. Some lodges are very luxurious while others are plain but clean and comfortable, yet all offer important proximity and access to wildlife.

## Mandatory Insurance

Since the areas we travel to are remote and wild (that's why we go there!), we require that all guests have, at minimum, medical evacuation insurance for this program. This is for the safety of all guests. We require that your chosen independent insurance plan includes at least \$250,000 in medical evacuation coverage.

To protect your investment and to provide peace of mind while you travel, we also strongly recommend purchasing comprehensive travel insurance. Plans may cover everything from medical treatment to trip cancellations and delays and lost luggage. Please contact our office if you would like more information about the medical evacuation and comprehensive travel insurance policies we offer by calling 800-543-8917.



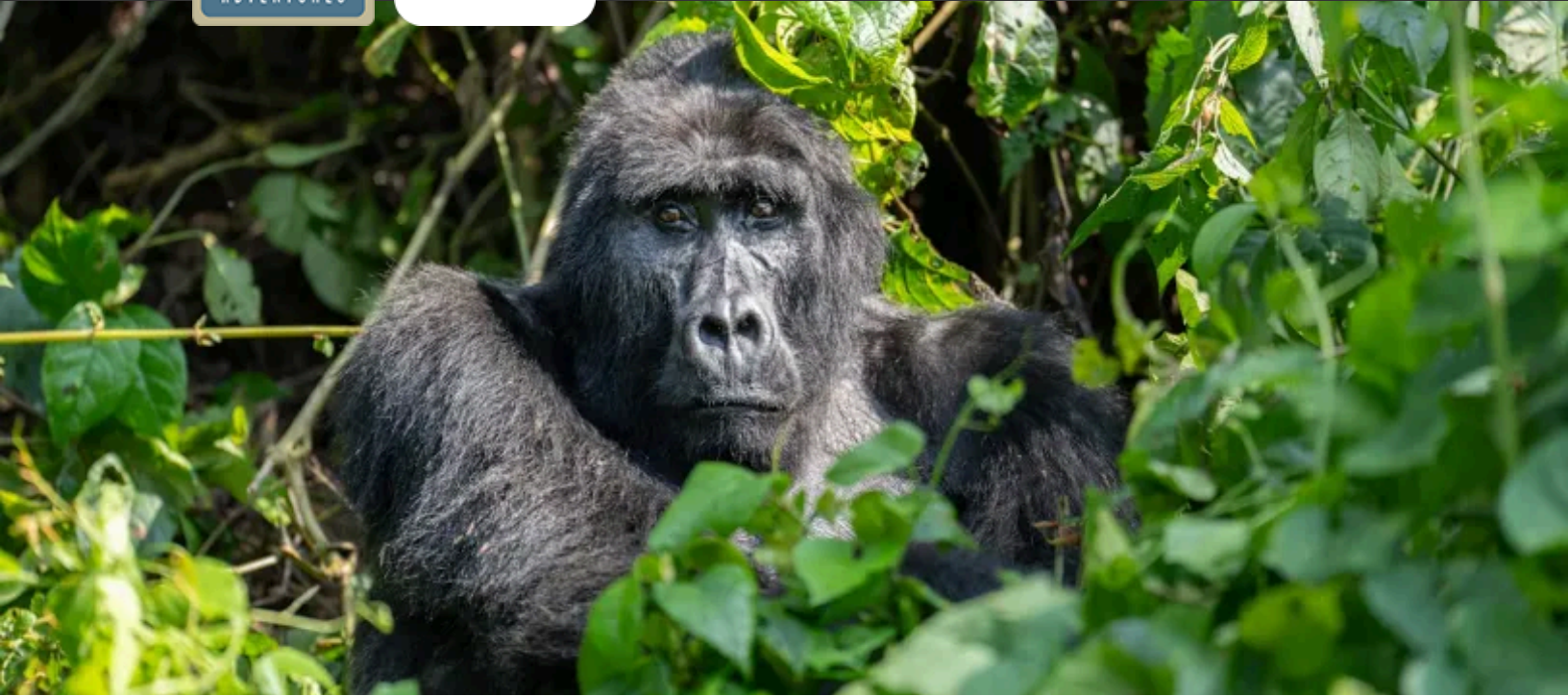
## Getting There & Getting Home

We ask that you arrive Entebbe, Uganda by 5 pm on Day 1 in order to attend a 7 pm welcome dinner. For those who would like to visit the botanical gardens on Day 1, please arrive by 1 pm and inform your Expedition Leader upon arrival that you would like to participate in the guided group excursion to the gardens beginning at 3 pm. We encourage travelers to arrive a day or more early to rest from their plane trip. You are free to depart from Kigali, Rwanda after 7 pm on the final day.

We can best serve you if our Natural Habitat Adventures Travel Desk makes your reservations, as we are intimately familiar with the special requirements of this program and can arrange the most efficient travel. Please call us at 800-543-8917. Note that while we offer you the best possible rates available to us on airfare and additional nights' accommodations, you may find special web rates or better fares online.



Discovering Our Planet Together

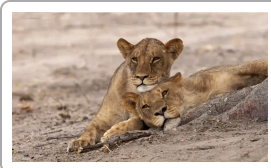


**Extension Details:**

**Akagera National Park Extension**  
\$4995

## Ultimate Gorilla Photo Expedition Extensions

**A Primate Extravaganza! Photograph Gorillas in Uganda & Rwanda, Plus Chimpanzees & Golden Monkeys**



### **Akagera National Park Extension**

An exclusive Big Five safari experience in Rwanda's restored Akagera National Park, where reintroduced species thrive—stay in a luxury safari camp on a lake with fishing and boat rides.

**\$4995**





**Natural Habitat & WWF: Discovering Our Planet Together**

Natural Habitat Adventures • PO Box 3065 • Boulder, CO USA 80307

USA & Canada: 800-543-8917 • International: 303-449-3711

© 2025 Natural Habitat Adventures

WWF's membership travel program is operated by Natural Habitat Adventures (Nat Hab). To date, Nat Hab has provided more than \$6 million in support of WWF's mission and will continue to give 1% of gross sales plus \$175,000 annually through 2028. WWF® and ©1986 Panda Symbol are owned by WWF. All rights reserved.