



Discovering Our Planet Together



Tanzania's Great Migration & Ngorongoro Crater

Encounter Epic African Wildlife on This Coveted Safari to the Serengeti & Beyond



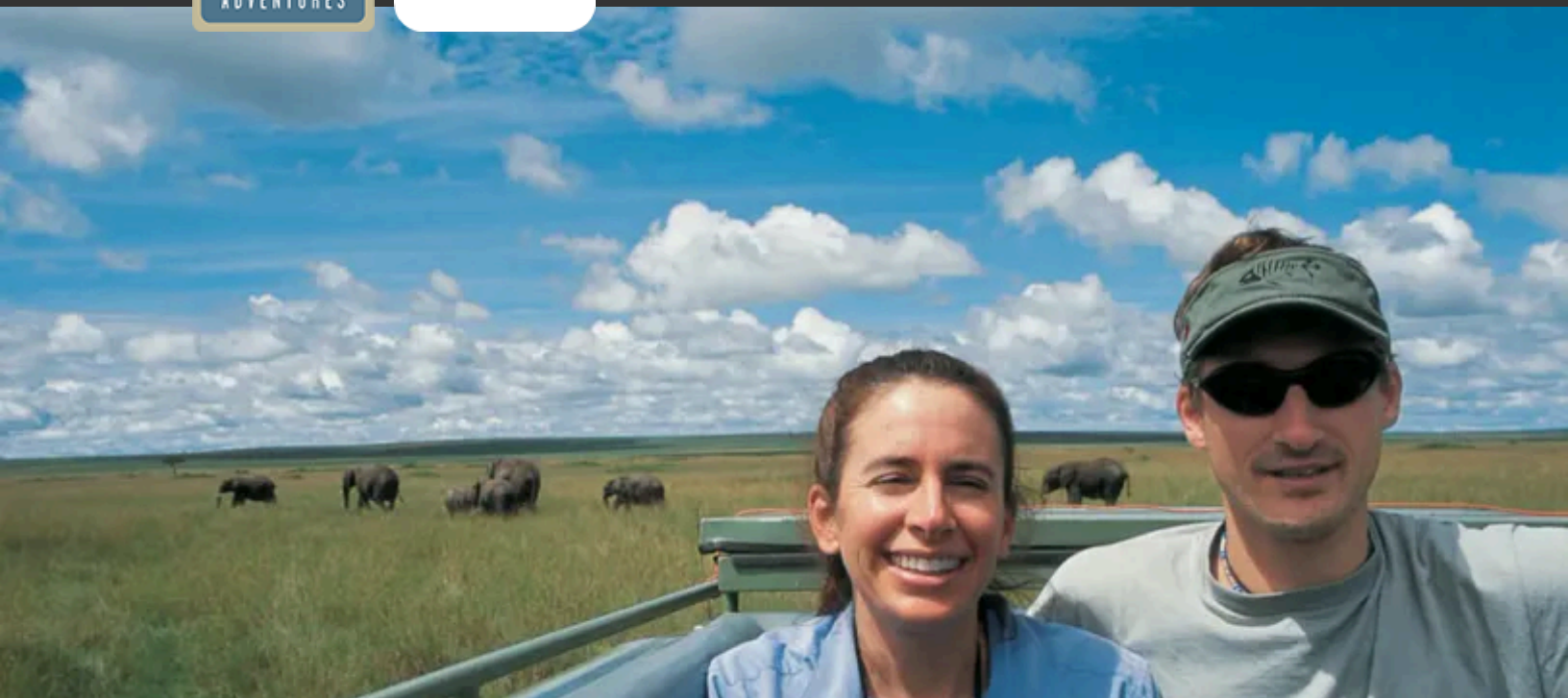
Discovering Our Planet Together

Table of Contents:

Trip Overview	3
Trip Itineraries	4
December–February Itinerary	5
July–October Itinerary	8
Trip Accommodations	11
What Makes Nat Hab Different?	13
Make It Private	15
Dates & Pricing Information	16
Trip Extensions	20



Discovering Our Planet Together



Trip Details:

Days

10 Days / Dec–
Feb & Jul–Oct

Price

From \$14995
(+Air)

Physical Requirements

Easy to
Moderate

Tanzania's Great Migration & Ngorongoro Crater

Encounter Epic African Wildlife on This Coveted Safari to the Serengeti & Beyond

On Africa's Great Plains, the pulse beat of the planet reverberates. Our Land Cruiser is a tiny island in a vast, grassy sea, its idle drowned out by waves of pounding hooves. Wildebeest and zebra flow in a living current across the Serengeti as lion and cheetah follow in their wake, finely tuned hunting machines ready to stalk and take down the weakest members of the herds. From our private mobile camp stationed in the center of the world's greatest ancient migration route, we are subsumed in a primal spectacle as the drama of predator and prey unfolds. Witness it in rare seclusion, immersed in the wonder of one of the world's truly epic wildlife events. And of course, no Tanzania safari is complete without a descent into the famed Ngorongoro Crater. The largest unbroken caldera on Earth, the crater is home to nearly 30,000 animals sustained within its walls.

Trip Highlights

Our route is adjusted seasonally for proximity to the herds, maximizing your chance to witness Africa's most dramatic wildlife phenomenon at close range

Enjoy unparalleled seclusion, comfort and vintage atmosphere at Nat Hab's own private camps, including our luxury mobile camp near the migration route

In addition to the migration, experience an exhilarating safari in Ngorongoro Crater, the world's largest unbroken caldera, home to 30,000 animals



Discovering Our Planet Together



Trip Details:

Days

10 Days / Dec–Feb & Jul–Oct

Price

From \$14995

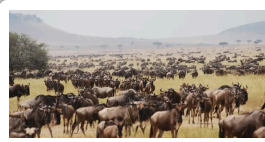
(+Air)

Physical Requirements

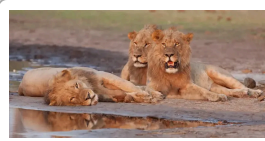
Easy to Moderate

Tanzania's Great Migration & Ngorongoro Crater Itineraries

Encounter Epic African Wildlife on This Coveted Safari to the Serengeti & Beyond



December–February Itinerary



July–October Itinerary



Discovering Our Planet Together



Itinerary At A Glance

Day 1

Arusha, Tanzania

Day 2

Ngorongoro Highlands

Day 3

Ngorongoro Crater Safari

Days 4 - 6

Southern Serengeti—Nat Hab's Migration Camp

Days 7 - 9

East-Central Serengeti—Nat Hab's Serengeti East Camp

Day 10

Arusha / Depart

December–February Itinerary

Encounter Epic African Wildlife on This Coveted Safari to the Serengeti & Beyond

Day 1: Arusha, Tanzania

Arrive at Kilimanjaro Airport and transfer to a peaceful country lodge at the base of Mount Meru. Relax amid the ambience of a 1905 colonial farmhouse and lush gardens, surrounded by mature native forest where colobus and Sykes' monkeys play in the trees. If time permits, take a swim in the pool or enjoy a restorative massage in the open-air tent, serenaded by birdsong. As the afternoon wanes, sip a sundowner on the terrace in view of Mount Kilimanjaro before gathering for a welcome dinner this evening.





Day 2: Ngorongoro Highlands

We depart this morning for our lodge in the Ngorongoro Highlands, a verdant expanse of wild bush and agricultural land comprising the heart of Tanzania's coffee country. The three-hour drive offers beautiful views of the rural countryside, with rolling hills, farms and small villages along the way. At Karatu, a rural town near the Ngorongoro Crater and gateway to Tanzania's wildlife-rich highlands, we visit a local primary school supported by Nat Hab's philanthropy program where we meet the children and learn how our tourism dollars contribute to their education.

This afternoon, arrive at our elegant lodge where you may wish to take an optional tour of a coffee plantation—this is prime terrain for growing some of Africa's finest beans in the moisture-laden, high-altitude cloud forest. Or choose to relax in the lodge's lush garden, perhaps enjoying a swim or a massage before dinner.

Day 3: Ngorongoro Crater Safari

Leave very early this morning for one of Africa's consummate safari experiences: a journey into the massive caldera that is the Ngorongoro Crater. We climb to the rim, then drop down the steep wall to the 100-square-mile crater floor. One of the Seven Natural Wonders of Africa, Ngorongoro Crater is the largest unbroken caldera on Earth—the center of a huge ancient volcano that scientists believe may have been larger than Mount Kilimanjaro. Twelve miles across and 2,000 feet deep, the crater is home to some 30,000 animals that live year-round inside its walls, attracted to its perpetual water sources.

Here in this veritable Eden, a wide variety of wildlife thrives within an ecosystem of abundant resources. Along with many mammals, flocks of pink flamingos cover the soda lakes, while large land birds like ostrich and kory bustard roam the grassy plain. Because of the crater's permanent supply of fresh water, it sustains the densest concentration of wildlife in Africa. Common sightings include elephant, buffalo, hippo, giraffe, zebra, blue wildebeest, eland, gazelle and waterbuck, while lion and hyena are abundant predators. A glimpse of the rare black rhinoceros is a special prize. Late this afternoon, we exit the crater and return to our lodge.



Discovering Our Planet Together

Days 4 - 6: Southern Serengeti—Nat Hab's Migration Camp

Fly this morning to Nat Hab's private mobile camp in the southern Serengeti, the legendary savanna whose name derives from a Maasai word meaning "endless plains." Each season, we place our Migration Camp in an area the herds are known to frequent. The days of heavy canvas hunting camps set for the likes of Roosevelt and Hemingway were nearly over until photo safaris gained popularity in the 1970s. Our camp is redolent with that vintage atmosphere, with candlelight dinners presented on white linen and nothing between you and the night sounds of the bush but the walls of your tent.

While home to a profusion of wildlife year-round, there is nothing like the Serengeti during the phenomenon of the Great Migration. We spend three days among the sea of mammals, following them in 4x4 vehicles with pop-top roofs that offer superb photography access. Optional hot air balloon safaris with a champagne breakfast upon landing are also available (additional cost). During the annual short rains, some 2 million wildebeest trek from Kenya's Maasai Mara to the southern Serengeti and back again, in search of new grass. They migrate with hundreds of thousands of zebra, whose superior vision serves as an early-warning system for predators. Gazelle and other antelope accompany the huge herds as well.

We are in the region during the time when zebra and wildebeest are giving birth, and the herds may be mostly stationary. The majority of baby wildebeest are born during a single 3-week window, after most zebra young have emerged, and we'll hope to see infants (though timing on the calf drop is weather-dependent). Predators seek out the most vulnerable members of the herds, and we may witness a lion seize a sick wildebeest or a cheetah overtaking a newborn that has become separated from its mother. Leopard, hyena and jackal also prey on the migrating herds while vultures hang in the air, waiting to feast on carrion. While the spectacle is at times grim, its primal drama is a wonder to behold.

Days 7 - 9: East-Central Serengeti—Nat Hab's Serengeti East Camp

Embark on a full-day game drive across the vast grasslands to our private camp in the Eastern Serengeti. Along the way, we'll pass the iconic Gol Kopjes, rugged rocky outcrops rising from the plains, known as "islands in a sea of grass." From the base of our exclusive bush camp surrounded by open range and kopjes, we take multiple game drives each day. Our private camp offers fabulous wildlife viewing in diverse habitats, particularly of the abundant feline predators that live and hunt in this area. It also provides exceptional seclusion away from crowds. From canvas tents shaded by giant acacia trees, survey 360-degree views of wildlife traversing the savanna, with more thrilling encounters in store on game drives.

Day 10: Arusha / Depart

This morning we fly back to Arusha and transfer to Ngare Sero Lodge at the base of Mount Meru, where a farewell lunch is served on arrival. Day rooms await in this peaceful setting, offering a chance to relax and refresh before your transfer to Kilimanjaro Airport for international departures this evening.



Discovering Our Planet Together



Itinerary At A Glance

Day 1

Arusha, Tanzania

Day 2

Ngorongoro Highlands

Day 3

Ngorongoro Crater Safari

Days 4 - 6

Northern Serengeti—Nat Hab's Migration Camp

Days 7 - 9

East-Central Serengeti—Nat Hab's Serengeti East Camp

Day 10

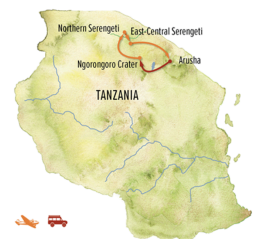
Arusha / Depart

July–October Itinerary

Encounter Epic African Wildlife on This Coveted Safari to the Serengeti & Beyond

Day 1: Arusha, Tanzania

Arrive at Kilimanjaro Airport and transfer to a peaceful country lodge at the base of Mount Meru. Relax amid the ambience of a 1905 colonial farmhouse and lush gardens, surrounded by mature native forest where colobus and Sykes' monkeys play in the trees. If time permits, take a swim in the pool or enjoy a restorative massage in the open-air tent, serenaded by birdsong. As the afternoon wanes, sip a sundowner on the terrace in view of Mount Kilimanjaro before gathering for a welcome dinner this evening.





Day 2: Ngorongoro Highlands

We depart this morning for our lodge in the Ngorongoro Highlands, a verdant expanse of wild bush and agricultural land comprising the heart of Tanzania's coffee country. The three-hour drive offers beautiful views of the rural countryside, with rolling hills, farms and small villages along the way. At Karatu, a rural town near the Ngorongoro Crater and gateway to Tanzania's wildlife-rich highlands, we visit a local primary school supported by Nat Hab's philanthropy program where we meet the children and learn how our tourism dollars contribute to their education.

This afternoon, arrive at our elegant lodge where you may wish to take an optional tour of a coffee plantation—this is prime terrain for growing some of Africa's finest beans in the moisture-laden, high-altitude cloud forest. Or choose to relax in the lodge's lush garden, perhaps enjoying a swim or a massage before dinner.

Day 3: Ngorongoro Crater Safari

Leave very early this morning for one of Africa's consummate safari experiences: a journey into the massive caldera that is the Ngorongoro Crater. We climb to the rim, then drop down the steep wall to the 100-square-mile crater floor. One of the Seven Natural Wonders of Africa, Ngorongoro Crater is the largest unbroken caldera on Earth—the center of a huge ancient volcano that scientists believe may have been larger than Mount Kilimanjaro. Twelve miles across and 2,000 feet deep, the crater is home to some 30,000 animals that live year-round inside its walls, attracted to its perpetual water sources.

Here in this veritable Eden, a wide variety of wildlife thrives within an ecosystem of abundant resources. Along with many mammals, flocks of pink flamingos cover the soda lakes, while large land birds like ostrich and kory bustard roam the grassy plain. Because of the crater's permanent supply of fresh water, it sustains the densest concentration of wildlife in Africa. Common sightings include elephant, buffalo, hippo, giraffe, zebra, blue wildebeest, eland, gazelle and waterbuck, while lion and hyena are abundant predators. A glimpse of the rare black rhinoceros is a special prize. Late this afternoon, we exit the crater and return to our lodge.



Days 4 - 6: Northern Serengeti—Nat Hab's Migration Camp

Early this morning, depart for our flight to the northern Serengeti. This legendary savanna derives its name from a Maasai word meaning “endless plains,” and the vista of golden grasslands stretching to the horizon under a blue bowl of sky provides an iconic image of East Africa. Our destination is Nat Hab's private Migration Camp, our base for a three-day immersion in Africa's Great Migration. In accord with the herds' seasonal movements, we locate our mobile camp in the northern Serengeti from July through October. This deluxe tented outpost rests within one of the main movement corridors for more than 2 million wildebeest, zebra and gazelle that make this annual trek, plus an accompanying cast of predators. Each year, the herds follow an ancient circuit covering 1,800 miles from Kenya's Maasai Mara to the southern Serengeti and back again. On daily game drives, witness this remarkable spectacle as the enormous herds traverse the savanna while big cats and hyenas steal behind. We may behold stunning scenes of predator-prey interaction as a lion takes down a sick animal or a cheetah snatches an infant. The spectacle can be grim, but it is a wonder to behold. Optional hot air balloon safaris with a champagne breakfast upon landing are also available (additional cost).

The days of heavy canvas hunting camps set for the likes of Roosevelt and Hemingway were nearly over until photo safaris gained popularity in the 1970s, and our secluded camp, with its walk-in canvas tents and crackling campfire, is redolent with that vintage atmosphere. Yet despite our remote location, we enjoy impressive luxuries, including candlelight dinners served on white linen under a canopy of stars.

Days 7 - 9: East-Central Serengeti—Nat Hab's Serengeti East Camp

Fly this morning to Seronera within Serengeti National Park. Meeting our safari vehicles and drivers, we set out on a wildlife drive and afterward arrive at our exclusive bush camp surrounded by open range and kopjes, rugged rocky outcrops rising from the plains, known as “islands in a sea of grass.”

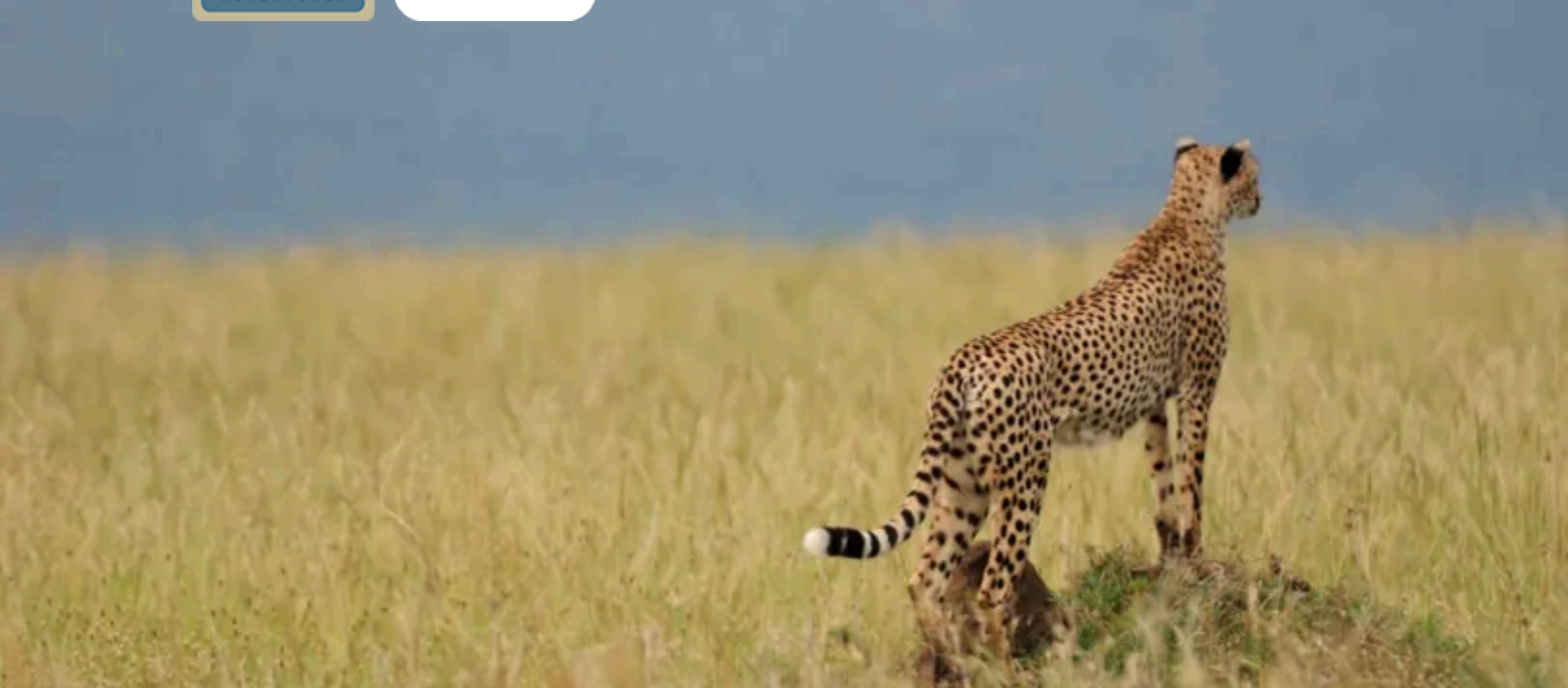
Our private camp offers fabulous wildlife viewing in diverse habitats, particularly of the abundant feline predators that live and hunt in this area. It also provides exceptional seclusion away from crowds. From canvas tents shaded by giant acacia trees, survey 360-degree views of wildlife traversing the savanna, with more thrilling encounters in store on game drives.

Day 10: Arusha / Depart

This morning we fly back to Arusha and transfer to Ngare Sero Lodge at the base of Mount Meru, where a farewell lunch is served on arrival. Day rooms await in this peaceful setting, offering a chance to relax and refresh before your transfer to Kilimanjaro Airport for international departures this evening.



Discovering Our Planet Together



Accommodation Details:

Nat Hab's Migration Camp—Serengeti

Nat Hab's Serengeti East Camp

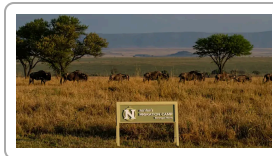
Ngare Sero Mountain Lodge

Plantation Lodge

For detailed descriptions, visit nathab.com/africa/tanzania-migration/accommodations

Tanzania's Great Migration & Ngorongoro Crater Accommodations

Encounter Epic African Wildlife on This Coveted Safari to the Serengeti & Beyond



Nat Hab's Migration Camp—Serengeti

Our own deluxe mobile tented camp is set seasonally for proximity to the flow of wildebeest and zebra herds through the Serengeti, optimizing the chance to witness the migration at close range.



Nat Hab's Serengeti East Camp

Located in a remote sector of the eastern Serengeti where solitude (and big cats!) reign, our mobile safari camp takes bush comfort to a new level, with seven canvas safari tents surrounded by rich wildlife habitat.



Ngare Sero Mountain Lodge

Ten spacious period-style suites front a sprawling lawn and lush gardens surrounding a 1905 German farmhouse, transformed from a colonial home into a tranquil lodge at the foot of Mount Meru.



Discovering Our Planet Together



Plantation Lodge

This elegant, owner-run lodge is set amid tall trees and lavish gardens filled with tropical plants and exotic birds, providing gracious hospitality in an oasis-like setting surrounded by coffee plantations.



Compare Migration Safaris...Here's Why Ours is Better!

No wildlife event on the planet rivals Africa's Great Migration for sheer drama. Twice each year the huge herds make a great circuit across the Serengeti Plains, following the grass that sprouts with the seasonal rains. To witness the migration is on many a wildlife lover's bucket list, and a coveted experience for nature photographers. But it's crucial to do it right—because all Tanzania migration safaris are not the same!

1

An Itinerary Designed for Optimal Migration Viewing Many companies operate the same standard "migration" tour year-round, driving the entire northern circuit of Tanzania with no concern to be in a particular place at a time that jibes with the arrival of the herds. We focus on the best time to see the animals, then build our safari itinerary and dates around that, attempting to time our presence for peak viewing. What's more, we spend three full days amid the migration, for optimal photo prospects.

2

We're Involved from Beginning to End We construct every component of your safari, then ensure that you are personally guided from start to finish by a highly trained Nat Hab Safari Expedition Leader, so you can have the utmost confidence in the quality and safety of our operations. Our oversight is meticulous, because our reputation depends on your safari's success.

3

Fly from Arusha to the Serengeti to Maximize Time with Wildlife Many companies drive you both ways to and from the Serengeti from Arusha. We fly you in to make more time for what you've come to Africa for: watching wildlife on safari!

4

Our Private Mobile Migration Camp Gets You Close to the Herds Rather than using crowded lodges where vehicles depart each morning in large numbers, often surrounding the same animals all at once, we insist on the smallest luxury bush camps located in isolated places where wildlife is prolific. In particular, our own private Migration Camp allows us flexibility to pursue wildlife where concentrations are greatest, rather than utilizing larger accommodations that are nowhere near the migration.

5

Coveted Early Morning Access to Ngorongoro Crater

We've designed our itinerary to make sure we are at the gate to enter Ngorongoro Crater the moment the reserve opens early in the morning. Our timing ensures a full day on safari in the crater, with an early arrival to beat the crowds. With expedited access to wildlife viewing on the crater floor early in the morning, we'll be there when many animals are most active.



Discovering Our Planet Together

6

Small Groups for Intimate Wildlife Encounters A small group is essential for optimal wildlife viewing and photography. We generally have the smallest group sizes in the safari industry. We take a maximum of 12 on this trip, divided into multiple vehicles within radio contact to track the migration. Small groups mean we get closer to the herds, get better photos, and enjoy more personalized interaction with our Expedition Leader and local trackers and guides.

7

A Window Seat for Every Traveler Every guest is guaranteed a window seat. We know how important unimpeded views are when you've come all this way to see and photograph the migration. That's why we split our group into separate top-of-the-line 4x4 safari vehicles, so no one is stuck in a middle seat. With just six guests per vehicle, each traveler gets an open side view with plenty of room.

8

Extra Luggage Allowance

Most airlines and safari companies in East Africa strictly limit luggage to 33 pounds per guest, including carry-on bags, with even the highest priced trips typically having this limitation. We have arranged a special luggage allowance of 44 pounds per guest, making it easier to travel comfortably without leaving behind essential items you need. This makes a big difference!

9

The World's Finest Safari Guides

Natural Habitat Adventures is known worldwide for employing the finest naturalist guides on the planet! In Tanzania, rather relying only on less-qualified local camp guides, our own Safari Expedition Leaders are the most highly trained guides in Africa, renowned for providing exceptional service. With you from beginning to end, our Expedition Leaders average approximately 15 years' guiding experience. Their training is further enhanced by the resources of WWF's premier scientists. **See Expedition Leader bios** and traveler comments regarding the quality of our leaders.

10

Our Quality-Value Guarantee Ensures Your Superior Safari Experience

Natural Habitat Adventures offers an exclusive guarantee, which states that we will meet the lofty expectations we set forth in our promotional materials. To our knowledge, this is the most ambitious guarantee made by any adventure travel company.

11

Feel Good About Your Carbon-Neutral Journey

We care deeply about our planet, as we know you do. When you travel with us, the carbon emissions from your trip are 100% offset—including your round-trip flights from home. Natural Habitat Adventures has been the world's first carbon-neutral travel company since 2007.



Discovering Our Planet Together

Make It Private or Design Your Own Custom Safari

Travel privately, exclusively with your immediate family, multi-generational family or group of friends. Our in-house safari experts can reserve a private departure for your group or help you design your own custom Africa itinerary—their expertise is second to none! **Click here** to request more info.

Please note that on Tanzania's Great Migration Make It Private departures we require a minimum group size of 6 travelers.

Also, please be aware that your per-person cost on a Make It Private trip will vary depending on the number of travelers in your group and may be as much as 10%-30% higher (ship-based trips may be even higher) than our normal trip cost unless you fill the trip.

This **Make It Private** option is available on nearly every Nat Hab trip for family and friend groups. Call an Adventure Specialist at 800-543-8917 or look for the "Make It Private" icon in the **pricing section** of a trip online at nathab.com to see prices based on your specific group size.



Discovering Our Planet Together



Dates & Pricing Summary:

Prices:
From \$14995
(+Air)

Group Size:
Limited to 12
Travelers

**Physical
Requirements:**
Easy to Moderate

Tanzania's Great Migration & Ngorongoro Crater Dates, Pricing & Info

Encounter Epic African Wildlife on This Coveted Safari to the Serengeti & Beyond

2025 Departures

Departure	Return	Notes
Jul 2, 2025	Jul 11, 2025	
Jul 26, 2025	Aug 4, 2025	
Aug 7, 2025	Aug 16, 2025	
Aug 13, 2025	Aug 22, 2025	
Aug 22, 2025	Aug 31, 2025	
Sep 7, 2025	Sep 16, 2025	
Sep 16, 2025	Sep 25, 2025	
Sep 27, 2025	Oct 6, 2025	
Oct 5, 2025	Oct 14, 2025	



Discovering Our Planet Together

Dates & Pricing Summary:

Prices:
From \$14995
(+Air)

Group Size:
Limited to 12
Travelers

Physical Requirements:
Easy to Moderate

Departure	Return	Notes
Dec 14, 2025	Dec 23, 2025	
Dec 30, 2025	Jan 8, 2026	

2026 Departures

Departure	Return	Notes
Feb 5, 2026	Feb 14, 2026	
Jul 3, 2026	Jul 12, 2026	
Jul 10, 2026	Jul 19, 2026	
Jul 16, 2026	Jul 25, 2026	
Aug 13, 2026	Aug 22, 2026	
Aug 22, 2026	Aug 31, 2026	
Aug 25, 2026	Sep 3, 2026	
Sep 10, 2026	Sep 19, 2026	
Sep 21, 2026	Sep 30, 2026	
Sep 26, 2026	Oct 5, 2026	
Oct 3, 2026	Oct 12, 2026	
Dec 16, 2026	Dec 25, 2026	
Dec 30, 2026	Jan 8, 2027	



Discovering Our Planet Together

Pricing

2025 Prices

➤ Trip Price

\$14995 to \$15295 (+internal air)



Internal Air Cost:

— **Jan-Mar & Dec:** \$1180 per person (this will be listed separately on our invoicing)

— **Jul-Oct:** \$1772 per person (this will be listed separately on our invoicing)

Single Occupancy: For a single room add \$1995. **Click here** to learn how you can avoid the single supplement.

Deposit: \$500 per person (nonrefundable)

Trip prices are per person based on double occupancy and are given in U.S. dollars.

Please read our Payment & Refund Policy here.

2026 Prices

➤ Trip Price

\$15995 to \$16295 (+internal air)

Internal Air Cost:

— **Jan-Mar & Dec:** \$1180 per person (this will be listed separately on our invoicing)

— **Jul-Oct:** \$1772 per person (this will be listed separately on our invoicing)

Single Occupancy: For a single room add \$1995. **Click here** to learn how you can avoid the single supplement.

Deposit: \$500 per person (nonrefundable)

Trip prices are per person based on double occupancy and are given in U.S. dollars. **Please read our**

Payment & Refund Policy here.

Included

➤ **Trip price includes:** Accommodations, services of Nat Hab's professional Expedition Leader(s), local guides and camp staff, all meals from dinner on Day 1 through lunch on final day, some alcoholic beverages, some gratuities, airport transfers on Day 1 and final day, all activities and entrance fees, all taxes, permits and service fees.

➤ **Internal air cost includes:** All light aircraft flights within the itinerary (this will be listed separately on our invoicing).

Not Included

Travel to and from start and end point of trip, premium alcoholic beverages, some gratuities, passport and visa fees, optional activities, items of a personal nature (phone calls, souvenirs, etc.), airport and departure taxes, optional travel insurance, and required medical evacuation insurance.



Physical Requirements

Easy to Moderate

To participate in this trip, you must be able to walk unassisted at a steady pace for at least one mile over uneven terrain, climb steps to get into and out of our raised safari vehicles, and be able to tolerate daily outdoor excursions that may last 4-5 hours or even a full day at a time, sometimes in hot, windy and/or dusty conditions. Wildlife drives pose a particular type of physical demand on the body, as they require long hours of sitting and take place over terrain that is often very rough and bumpy, including dirt roads with many ruts and potholes. Travelers with back or neck problems, or other health issues that could be exacerbated by such conditions, should take this into consideration. While any walking safaris are considered optional, travelers must be able to walk unassisted to and from the vehicle to our camp accommodations, sometimes walking over uneven ground or on boardwalks. Days spent on safari are often long, as mornings typically start before daybreak and evening meals are served after sundown. Safari accommodations and vehicles are not climate-controlled and, depending on the season, temperatures can range from quite cold to extremely hot, so it is critical that travelers come prepared.

On custom or private departures with smaller groups, our ability to accommodate varying levels of physical abilities or interests is limited, since these trips are staffed with a single Expedition Leader who may be assisted, pending availability, by local guides.

Mandatory Insurance

Since the areas we travel to on this trip are remote and wild (that's why we go there!), we require medical evacuation insurance for our guests' safety. If you decline the medical evacuation insurance coverage offered by Natural Habitat, we request that you send us documentation of the independent coverage you have selected. We will add the cost of a medical evacuation policy to your tour invoice until you provide our office with proof of coverage including your insurance company's name, contact number and your individual policy number. Thank you for understanding that our policy exists exclusively in the interest of our guests' safety.

Getting There & Getting Home

Please plan to arrive in Arusha, Tanzania by 5 pm on Day 1 in order to attend a 7 pm Welcome Dinner. You are free to depart from Arusha after 5 pm on the final day.

We can best serve you if our Natural Habitat Adventures Travel Desk makes your reservations, as we are intimately familiar with the special requirements of this program and can arrange the most efficient travel. Please call us at 800-543-8917. Note that while we offer you the best possible rates available to us on airfare and additional nights' accommodations, you may find special web rates or better fares online.



Discovering Our Planet Together



Extension Details:

Extra Day in Arusha
\$645

Tarangire National Park
\$5195

Maasai Mara Extension
\$5595

Zanzibar Extension
\$1395

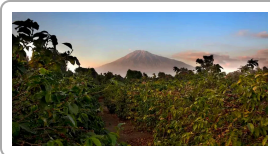
Uganda Mountain Gorilla Extension
\$3995

Rwanda Mountain Gorilla Extension
\$4995

Madagascar Explorer
\$11995

Tanzania's Great Migration & Ngorongoro Crater Extensions

Encounter Epic African Wildlife on This Coveted Safari to the Serengeti & Beyond



Extra Day in Arusha

Arusha is the jumping-off point for safaris to Tanzania's famous national parks—a lively city with a temperate climate at the foot of Mount Meru.

\$645



Tarangire National Park

Less-visited Tarangire, the "Baobab Capital of the World," is home to these giant ancient trees, huge elephant herds and some of Africa's densest wildlife populations.

\$5195



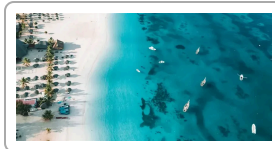
Maasai Mara Extension

Experience wild Africa in Kenya's Maasai Mara, a vast mosaic of savannas and acacia-dotted plains on an exclusive Big Five safari from private mobile camps far from crowds.

\$5595



Discovering Our Planet Together



Zanzibar Extension

Discover a serene oasis with white sand beaches and clear waters in this Indian Ocean archipelago celebrated for natural beauty, history and culture.

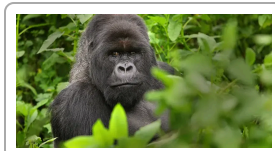
\$1395 (+air)



Uganda Mountain Gorilla Extension

On a 5-day safari extension in the rain forests of Uganda, track endangered mountain gorillas on one of the world's most moving and heartwarming wildlife adventures.

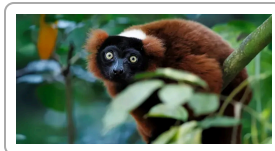
\$3995 (+air/permits)



Rwanda Mountain Gorilla Extension

Track endangered mountain gorillas, hike through the rainforest with expert guides and spend rare moments with a habituated family troop.

\$4995 (+permits)



Madagascar Explorer

Our compact yet diverse itinerary reveals a mix of contrasting ecosystems—primary rainforest, pristine beaches, ancient baobabs and coastal mangroves—as we go in search of rare and endemic flora and fauna.

\$11995



Natural Habitat & WWF: Discovering Our Planet Together

Natural Habitat Adventures • PO Box 3065 • Boulder, CO USA 80307

USA & Canada: 800-543-8917 • International: 303-449-3711

© 2025 Natural Habitat Adventures

WWF's membership travel program is operated by Natural Habitat Adventures (Nat Hab). To date, Nat Hab has provided more than \$6 million in support of WWF's mission and will continue to give 1% of gross sales plus \$175,000 annually through 2028. WWF® and ©1986 Panda Symbol are owned by WWF. All rights reserved.