



Discovering Our Planet Together



Secluded Botswana Photo Expedition

Matchless Wildlife Encounters on an Exclusive Small-Group Photography Safari

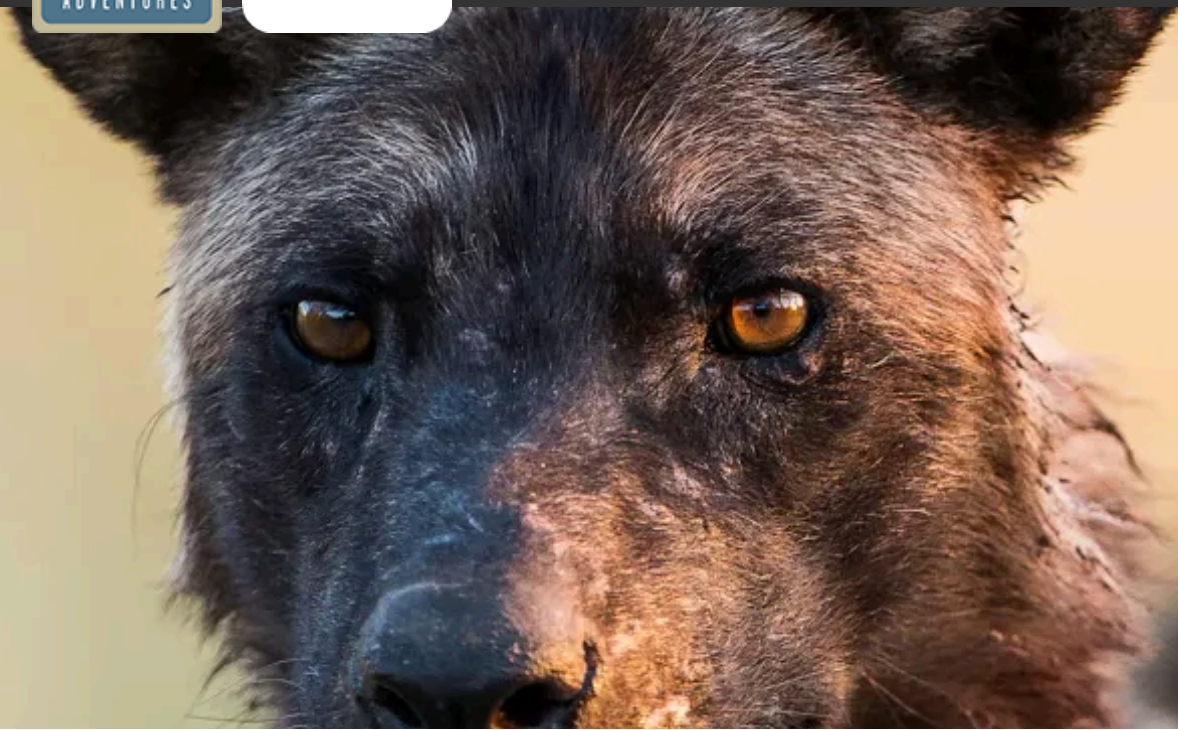


Table of Contents:

Trip Overview	3
Trip Itinerary	4
Trip Accommodations	8
What Makes Nat Hab Different?	10
Make It Private	12
Dates & Pricing Information	13
Trip Extensions	17



Discovering Our Planet Together



Trip Details:

Days
12 Days / Jun-Oct

Price
From \$19795 (+Air)

Physical Requirements
Easy to Moderate

Secluded Botswana Photo Expedition

Matchless Wildlife Encounters on an Exclusive Small-Group Photography Safari

Botswana is an epic safari destination for nature photographers. Boasting an extraordinary amount and diversity of wildlife, Botswana's celebrated reserves offer an encounter with genuine African wilderness far from crowds. We take advantage of classic tented bush camps on remote private reserves that enhance your proximity to abundant wildlife. Head out at sunrise to capture shots of leopard and cheetah hunting in the cool morning air on the Linyanti and Gomoti savannas. Photograph buffalo, giraffe, zebra and antelope at watering holes that sustain life on the arid plains. In the marshes of the Okavango Delta, witness a dazzling array of birds, water-adapted game, and lurking crocodiles. Along the Chobe River, photograph gregarious hippos and elephant herds massing to drink. Secluded Botswana will exceed every wildlife photographer's wildest dreams!

Trip Highlights

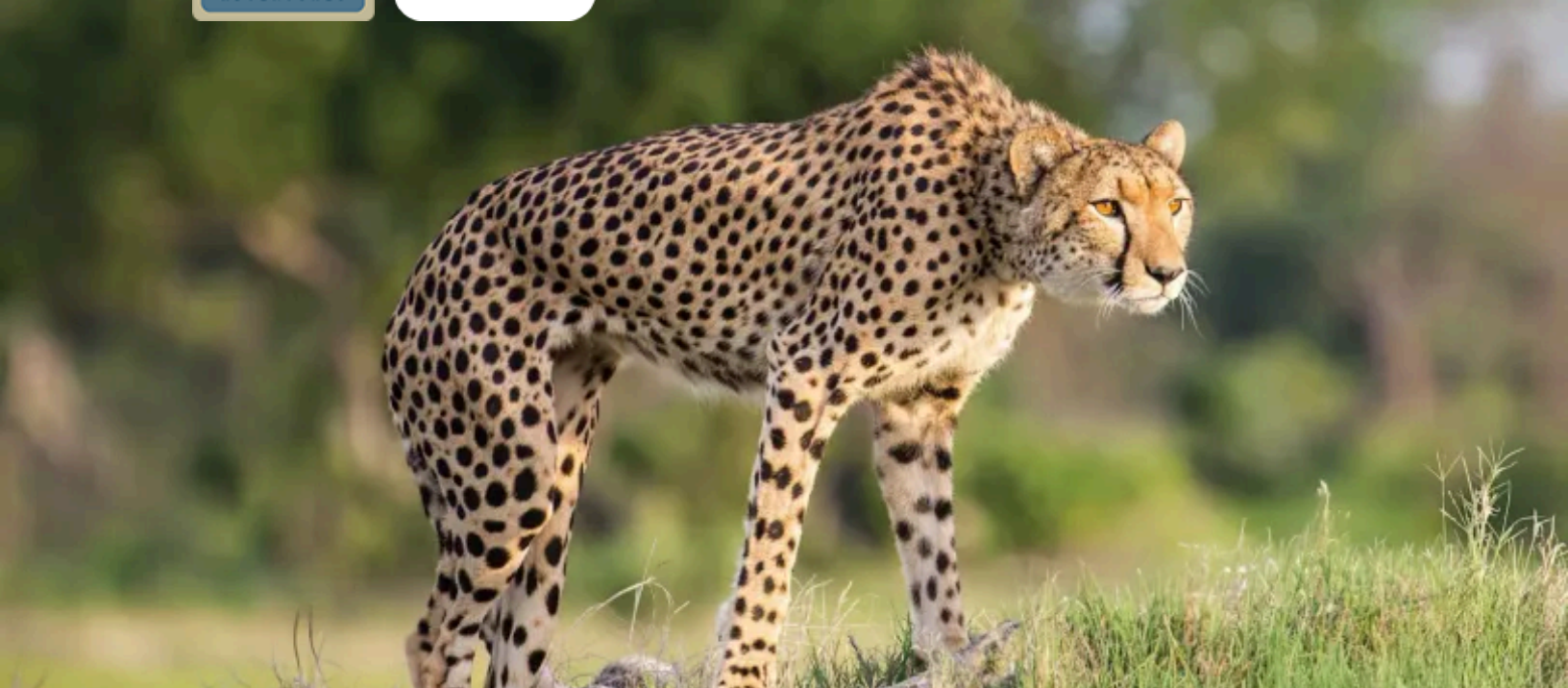
You won't find a better supported, more in-depth photography adventure designed for maximum wildlife encounters—for just eight guests, with zero crowds!

Our own luxury safari camps, isolated on remote private reserves, offer vintage ambience, unsurpassed comfort and astounding proximity to wildlife

Led by top naturalist-photographer guides, capture shots of big cats, rhinos, huge elephant herds and more, on 4x4 drives and a private doors-off helicopter safari



Discovering Our Planet Together



Itinerary At A Glance

Day 1

Livingstone, Zambia—Zambezi River Cruise

Day 2

Mosi-oa-Tunya National Park—Victoria Falls / Village Visit / Rhino Walk

Days 3 - 5

Chobe National Park, Botswana / Linyanti Private Reserve

Days 6 - 8

Linyanti / Okavango Delta—Helicopter Flight

Days 9 - 11

Southeast Okavango—Santawani Private Concession—Predator Researcher Visit

Day 12

Maun / Depart

Secluded Botswana Photo Expedition Itinerary

Matchless Wildlife Encounters on an Exclusive Small-Group Photography Safari

Day 1: Livingstone, Zambia—Zambezi River Cruise

Our Botswana photo safari begins just over the border in Livingstone, Zambia, where you're met on arrival and transferred to Toka Leya to spend the night. This luxury camp sits in a prime location overlooking the mighty Zambezi River upriver from Victoria Falls, surrounded by Mosi-oa-Tunya National Park, a UNESCO World Heritage Site. The park's name means "The Smoke that Thunders," and it's an apt moniker, as we see mist clouds rising off the falls from miles away. Great photo opportunities are on offer right away during a classic sunset cruise, as we look for hippos and crocodiles on the riverbanks. Afterward, join our Expedition Leader for a welcome dinner.





Day 2: Mosi-oa-Tunya National Park—Victoria Falls / Village Visit / Rhino Walk

Our focus today is Mosi-oa-Tunya National Park with its centerpiece, Victoria Falls, which we explore on a guided walking tour along the rim this morning. The world's most astounding cataract, Victoria Falls spans more than a mile and plummets 350 feet into the Zambezi Gorge below, producing so much spray that the intense moisture has created a rain forest microecosystem on the rim. A network of walkways offers varying viewpoints over the falls, with exciting photography opportunities.

Next, we visit a nearby village to learn about the culture and daily life of the local people. Then, we head farther into the national park to look for white rhinos—our best chance to see them up close. This small but growing population currently numbers 10 individuals including calves. They're carefully managed and protected from poaching by around-the-clock armed guards. Because predators do not live in the park, we approach the rhinos via a short walk through the diverse landscape, a combination of tall riverine forests, woodland and open grasslands. We're likely to see elephants, giraffes, baboons, plentiful birds and zebra. But the true prize is encountering the placid rhinos, endangered icons of the African wild. During the excursion, we follow the rhinos' movements and observe their behavior as we learn about the critical conservation measures striving to bring this population — and the entire species — back from the brink.

Days 3 - 5: Chobe National Park, Botswana / Linyanti Private Reserve

Traveling by road, we cross the Chobe River into Botswana's Chobe National Park, famed for its vast elephant herds—a population that exceeds 70,000. On a private boat cruise down the river and its myriad channels, we sometimes see several hundred elephants in a single day, with excellent chances for close-up photos. Waterbirds abound, including herons and storks, and hippos and crocodiles are on display along the muddy banks. Keep an eye out for egrets perched on the backs of elephants cooling off in the water—they make entertaining subjects.

This afternoon, fly to the private Linyanti Wildlife Reserve, some of Africa's most dramatic big-game country. Its tree-dotted plains are home to lion, leopard, spotted hyena and African wild dog, as well as enormous elephant herds. We'll expect to encounter wildlife in amazing proximity along the Linyanti River and surrounding environs, capturing thrilling close-ups of elephants, hippos and numerous birds. In the evenings, relax at our secluded camp, where well-appointed walk-in tents evoke an earlier romantic era of safari travel. Through the thorny acacia branches we see more stars than we ever dreamed of, scattered across an impossibly black sky.



Days 6 - 8: Linyanti / Okavango Delta—Helicopter Flight

After a final wildlife drive in the wilds of Linyanti, transfer by light aircraft to the Okavango Delta. Earth's largest inland water system, the delta's headwaters lie in the western highlands of Angola. They join with other rivers in Namibia and Botswana to meet the Kalahari Desert, creating a green oasis that sprawls amid the sands and dry savanna. When rains are typical and floodwaters are able to rise, it is a vast network of waterways and wetlands, and the Okavango is home to a profuse collection of wildlife and lush vegetation.

Jacana Camp is a dream base for wildlife photographers. Located in the heart of the delta, it's surrounded by a maze of canals and lagoons that sustain a profusion of wildlife. The wetlands and islands are home to many rare birds, and we may see wattled cranes, Pel's fishing owls, jacanas, rails, crakes and moorhens. Following the reed-fringed channels, we may also capture shots of water-adapted antelope such as red lechwe browsing in the grasses. Depending upon water levels and wildlife movement, explore the constantly shifting marsh by *mokoro*, a traditional poled dugout canoe, offering a chance to photograph wildlife at eye level in complete quiet. During our stay at Jacana, we also capture aerial images from an exhilarating doors-off helicopter flight over the watery maze below, with an unimpeded view for each guest. We also hope to do a guided walk, for an intimate perspective on the small wonders that also surround us. (Please note that water levels and activities may vary based on actual amounts of anticipated annual rainfall.)

Days 9 - 11: Southeast Okavango—Santawani Private Concession—Predator Researcher Visit

This morning we fly by light aircraft to Gomoti Tented Camp in the heart of the Santawani Concession, a private reserve encompassing nearly 15,000 acres in the southeast corner of the Okavango Delta. The aerial transfer offers exhilarating photo opportunities of the landscape below. While some areas of the delta are permanently flooded, other habitats create a mosaic of varied landscapes, including drier regions like the area that surrounds our camp. A mix of dense riverine woodland, open savanna and acacia scrub provide ample food for a large array of browsers and grazing species, as well as predators including cheetah, leopard, lion and rare wild dog.

The Gomoti River is a year-round lifeline for animals, while inland waterholes also sustain them during the dry season. The diverse range of habitats makes the Gomoti region ideal for all-day photography excursions, including traditional 4x4 wildlife drives, picnic lunches and night drives in search of nocturnal species. A special highlight of our time at Gomoti is the chance to view wildlife from our own fully **electric safari vehicle**, charged with renewable solar energy. During our stay in Santawani, we're joined by a local researcher to learn about studies on the wide range of predators in the area, including research projects on wild dog, cheetah and leopard. After each exhilarating day, our intimate private camp offers a tremendous sense of seclusion in the wilderness.



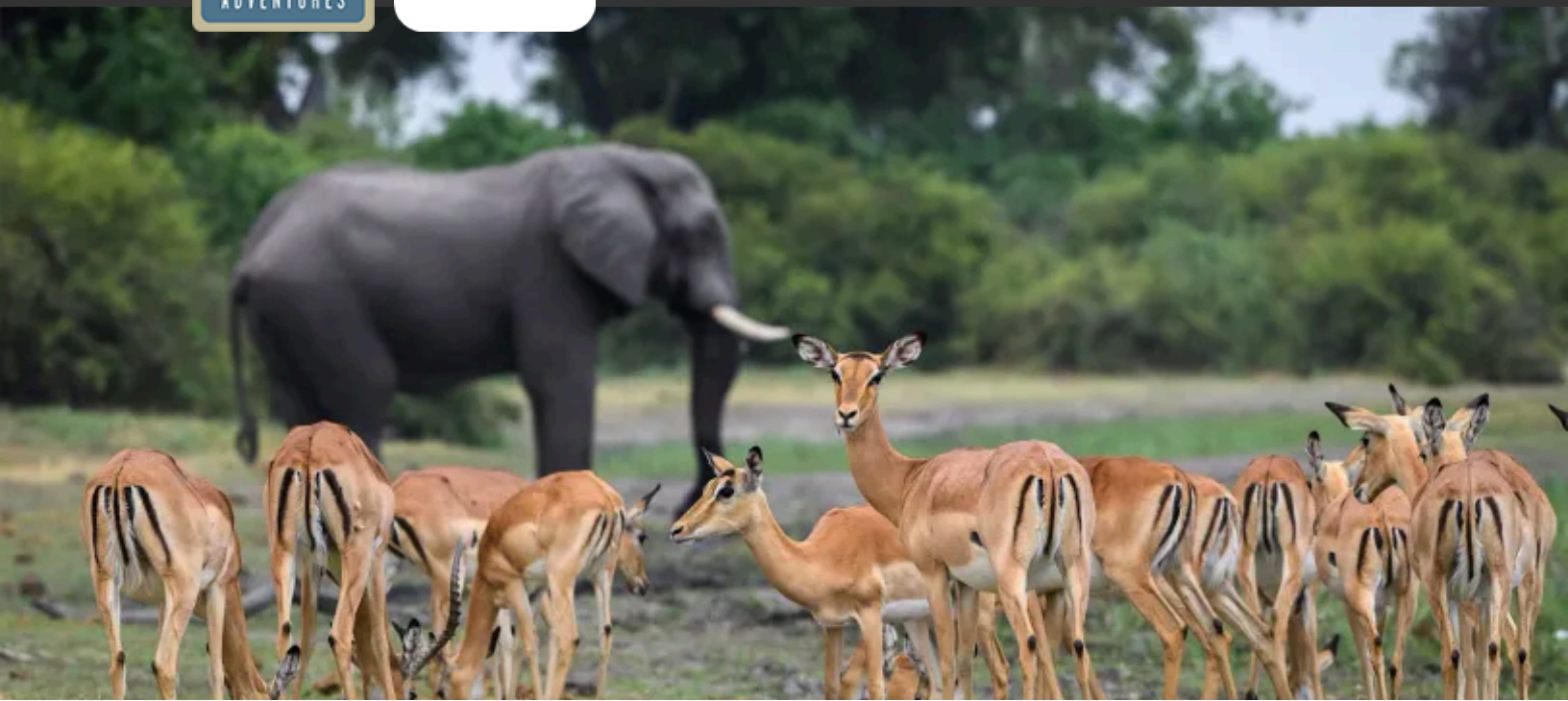
Day 12: Maun / Depart

Our Botswana photo safari comes to a close when we depart by air for Maun, where we connect with homeward flights or continue with onward extensions.

Click here to view the seasonal variations of weather and wildlife viewing in Botswana.



Discovering Our Planet Together



Accommodation Details:

Toka Leya

Nat Hab's Linyanti Camp–
Linyanti Private Reserve

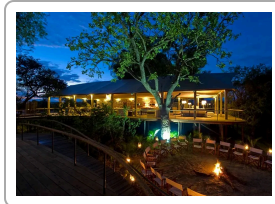
Nat Hab's Pelo Camp–Heart of
the Delta

Nat Hab's Gomoti Camp–
Okavango South

For detailed descriptions, visit
nathab.com/africa/secluded-botswana-photo-expedition/accommodations

Secluded Botswana Photo Expedition Accommodations

Matchless Wildlife Encounters on an Exclusive Small-Group Photography Safari



Toka Leya

This luxurious camp on the Zambia side overlooks the Zambezi River and its islands, with hippos and crocodiles on view from tents that are raised on stilts and connected by wooden walkways.



Nat Hab's Linyanti Camp–Linyanti Private Reserve

Magnificent knob thorn acacia trees shade this authentic bush camp where luxurious tents capitalize on a splendid view over the Linyanti waterways in an intimate, wild setting.



Nat Hab's Pelo Camp–Heart of the Delta

From this seasonal tented camp on the Jao Concession in the heart of the delta, guests experience a watery wilderness immersion with lodging and excursions inside permanently flooded terrain.



Discovering Our Planet Together



Nat Hab's Gomoti Camp–Okavango South

Our private camp, exclusively for our use, has just five canvas tents in an intimate setting evocative of an earlier safari era, illuminated by the vintage glow of paraffin lanterns and a crackling campfire.



What Makes This Photography Safari So Much Better Than Most?

For the ultimate Africa photo safari, Botswana has few rivals. More than 45% of the country is protected within national parks, game reserves and private concessions. Visitor numbers are limited. And animals are prolific in Botswana's varied ecosystems, allowing for exceptional close-up photography. Yet not every safari operator takes full advantage of these elements the way we do. Here's why you'll get better photos when you travel with Nat Hab:

- 1 Maximum Group Size Just 8 Travelers**

Our exceptionally small group means quiet, intimate encounters with wildlife. You won't have to jockey for position to get great photos. And you'll have the close attention and personalized guidance from our Photo Expedition Leader every step of the way.
- 2 An Open "Window" Seat for Every Traveler**

Nothing is more important on a photo safari than access to the edge of the vehicle for unimpeded shots. The state-of-the-art vehicles we charter have open sides and 10 cushioned passenger seats—one in front next to the driver, followed by three rows of three seats each—though we limit our capacity to just 4 travelers in each vehicle on wildlife drives, for maximum viewing, comfort and photo opportunities. This means plenty of room for all your gear, too.
- 3 An Outstanding Itinerary for Wildlife Photography**

Our itinerary features a diverse mix of habitats and secluded photo opportunities from private reserves where crowds are non-existent – meaning you'll see more species, in quieter settings, at closer range.
- 4 Helicopter Flightseeing for Aerial Imagery**

Capture shots and video of wildlife on the move from on high during an exhilarating doors-off helicopter flight over the Okavango Delta and Gomoti River, a year-round lifeline for a wide array of animals
- 5 Chartered Flights Maximize Your Time on Safari**

Chartered flights by light aircraft (rather than long drives over rough dirt roads) between most safari locations lets you spend more time actually taking photos on safari, rather than in tiring transit..



6

Maximize Your Photo Opportunities on Private Reserves

Rather than staying in more heavily visited national parks, we concentrate on private reserves where access and visitor numbers are strictly limited. Our small, secluded camps in the Linyanti and Moremi regions are set amid a profusion of wildlife. Private reserves also allow us to shoot at sunset when the light is best—other groups staying in national parks must be back at camp by sunset due to park regulations. Likewise, we are allowed to take guided bush walks, not permitted on public lands, for a more intimate perspective on smaller subjects.

7

The World's Finest Naturalist-Photographer Guides

At the helm of our safaris are some of the most highly certified and experienced naturalist guides in Africa. They are also professional photographers and instructors, offering personalized attention and coaching every step of the way—no matter your ability level. With additional training and resources provided by WWF's top scientists, our guides are second to none. **See Photo Expedition Leader bios** and traveler comments regarding the quality of our leaders.

8

Our Quality-Value Guarantee Ensures Your Superior Botswana Photo Safari

With Natural Habitat Photo Expeditions you receive our exclusive guarantee, which clearly states that we will meet the lofty expectations we set in our promotional materials. To our knowledge, this is the most ambitious guarantee made by any adventure travel company.

9

Feel Good About the Way You Travel; We care deeply about our planet, just as you do.

When you travel with us, the carbon emissions from your trip are 100% offset. Natural Habitat Adventures is the world's first carbon-neutral travel company.

10

Natural Habitat Adventures is WWF's Travel Partner

Because of our commitment to environmentally friendly travel, as well as the exceptional quality of our adventures, World Wildlife Fund—the world's leading environmental conservation organization—has named Natural Habitat Adventures as its worldwide travel partner, a designation that makes us exceedingly proud!



Make It Private or Design Your Own Custom Safari

Travel privately, exclusively with your immediate family, multi-generational family or group of friends. Our in-house safari experts can reserve a private departure for your group or help you design your own custom Africa itinerary—their expertise is second to none! **Click here** to request more info.

Please note that on Secluded Botswana Photo Expedition Make It Private departures we require a minimum group size of 4 travelers.

Also, please be aware that your per-person cost on a Make It Private trip will vary depending on the number of travelers in your group and may be as much as 10%-30% higher (ship-based trips may be even higher) than our normal trip cost unless you fill the trip.

This **Make It Private** option is available on nearly every Nat Hab trip for family and friend groups. Call an Adventure Specialist at 800-543-8917 or look for the "Make It Private" icon in the **pricing section** of a trip online at nathab.com to see prices based on your specific group size.



Discovering Our Planet Together



Dates & Pricing Summary:

Prices: From \$19795 (+Air)

Group Size: Limited to 8 Travelers

Physical Requirements: Easy to Moderate

Secluded Botswana Photo Expedition Dates, Pricing & Info

Matchless Wildlife Encounters on an Exclusive Small-Group Photography Safari

2025 Departures

Departure	Return	Notes
Jun 27, 2025	Jul 8, 2025	
Jul 27, 2025	Aug 7, 2025	
Aug 23, 2025	Sep 3, 2025	
Sep 13, 2025	Sep 24, 2025	
Oct 25, 2025	Nov 5, 2025	

2026 Departures

Departure	Return	Notes
Jun 28, 2026	Jul 9, 2026	
Jul 28, 2026	Aug 8, 2026	



Departure	Return	Notes
Aug 24, 2026	Sep 4, 2026	
Sep 14, 2026	Sep 25, 2026	
Oct 14, 2026	Oct 25, 2026	

2027 Departures

Departure	Return	Notes
Sep 15, 2027	Sep 26, 2027	



Pricing

2025 Prices

- **Photo Expedition Price**
\$19795 to \$20995 (+internal air)



Internal Air Cost: \$2176 per person (this will be listed separately on our invoicing).

Single Occupancy: For a single room add \$1895. **Click here** to learn how you can avoid the single supplement.

Deposit: \$500 per person (nonrefundable)

Trip prices are per person based on double occupancy and are given in U.S. dollars.

Please read our Payment & Refund Policy here.

2026 Prices

Mouse over or tap dates above to view prices for specific departure dates.

- **Photo Expedition Price**
\$21995 (+internal air)

Internal Air Cost: \$2343 per person (this will be listed separately on our invoicing).

Single Occupancy: For a single room add \$1895. **Click here** to learn how you can avoid the single supplement.

Deposit: \$500 per person (nonrefundable)

Trip prices are per person based on double occupancy and are given in U.S. dollars. **Please read our**

Payment & Refund Policy here.

Included

- **Trip price includes:** Accommodations in luxury safari camps, services of Nat Hab's professional Expedition Leader, local guides and camp staff, premier open-sided 4-wheel drive Land Cruisers or Rovers, private Chobe boat cruise, visit with predator researcher at Gomoti Camp, all meals from dinner on Day 1 through breakfast on final day, some alcoholic beverages, some gratuities, airport transfers on Day 1 and final day, all activities and entrance fees, all taxes, permits and service fees.
- **Private helicopter flight** over the Okavango Delta, plus extra luggage allowance.
- **Internal air cost includes:** All light aircraft flights within the itinerary (this will be listed separately on our invoicing).

Not Included

Travel to and from the start and end point of your trip, some alcoholic beverages, some gratuities, passport and visa fees (if any), optional activities, items of a personal nature (phone calls, laundry and internet, etc.), airline baggage fees, airport and departure taxes (if any), required medical evacuation insurance, optional travel protection insurance.



Physical Requirements

Easy to Moderate

Our safari drives can be bumpy and long as we traverse rough terrain and pot-holed roads, potentially causing discomfort for those with back, neck, or other health issues. Guests must independently climb into high-profile 4X4 vehicles multiple times daily, using narrow steps with only a wire for a railing, and they will need upper body strength and dexterity to step up and into the vehicle. All travelers should be able to walk a mile unassisted over uneven ground and often by flashlight after dark. Short walks on safari are optional but recommended, as they greatly enhance the experience. We travel between camps by small bush planes, requiring comfort with compact aircraft and the ability to climb steep, narrow steps with minimal support. Safari days are long, starting before dawn and ending after dusk. Accommodations and vehicles lack climate control, with temperatures varying widely by season and requiring adequate layers and clothing options. We recommend that all travelers have an adventurous spirit, as you will often enjoy the closest of animal encounters.

Important Information About This Trip

This photo safari includes Botswana's best and most remote wildlife locales while staying in comfortable bush accommodations. Each is small and intimate (usually accommodating only our small group of eight guests) with full electricity and private bathrooms with hot and cold running water. The accommodations are a highlight of the trip, following on the amazing wildlife experiences discovered by our Expedition Leaders throughout the day. On these trips, changes to the itinerary may occur in order to take advantage of conditions unique to the season and/or accommodate unexpected changes in water levels; therefore, itineraries may need to be rerouted or redesigned without notice.

Mandatory Insurance

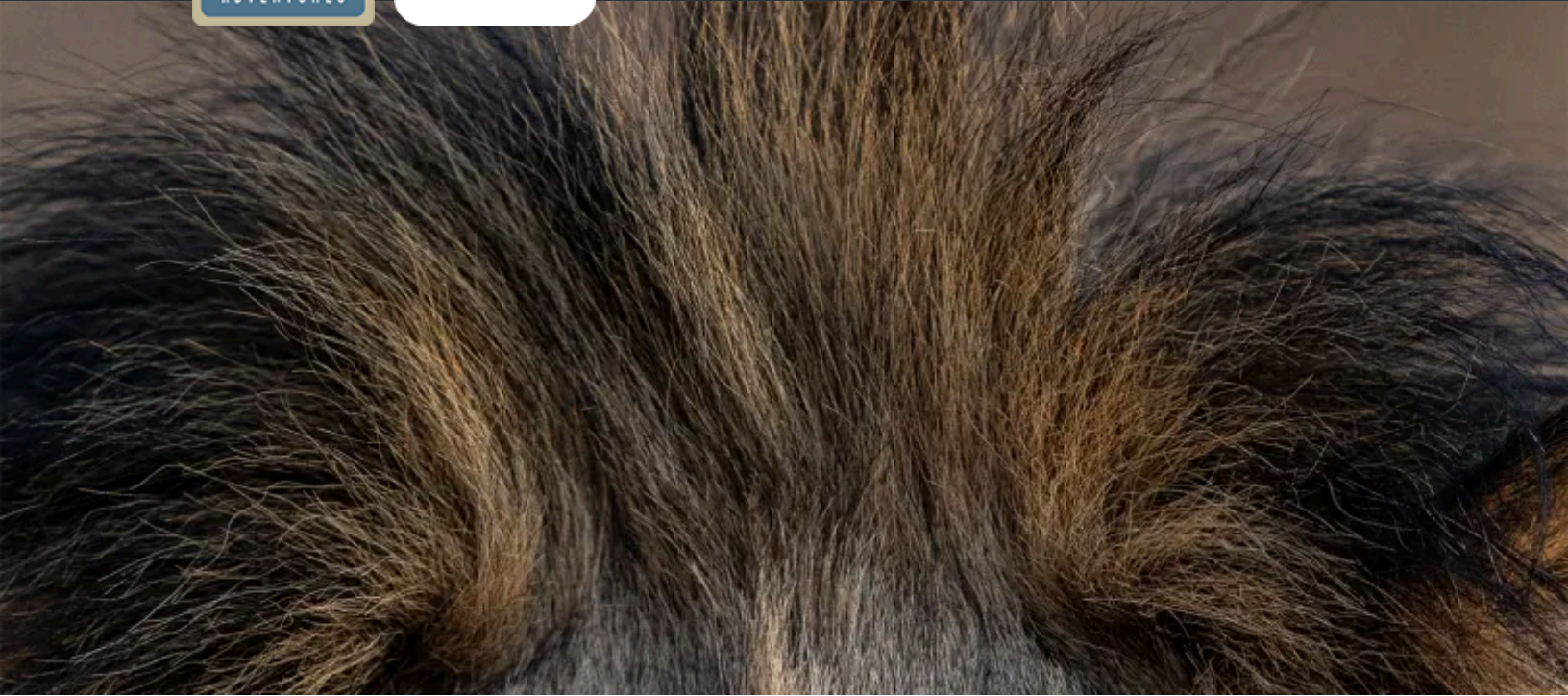
Since the areas we travel to on this trip are remote and wild (that's why we go there!), we require medical evacuation insurance for our guests' safety. If you decline the medical evacuation insurance coverage offered by Natural Habitat, we request that you send us documentation of the independent coverage you have selected. We will add the cost of a medical evacuation policy to your tour invoice until you provide our office with proof of coverage including your insurance company's name, contact number and your individual policy number. Thank you for understanding that our policy exists exclusively in the interest of our guests' safety.

Getting There & Getting Home

You must arrive in Livingstone, Zambia by 1 pm on Day 1 and you may depart Maun, Botswana anytime after 1:30 pm on the final day. We can best serve you if our Natural Habitat Adventures Travel Desk makes your reservations, as our staff is intimately familiar with the special requirements of these programs and can arrange the most efficient travel. Please call us at 800-543-8917. Note that while we offer you the best possible rates available to us on airfare and additional nights' accommodations, you may find special web rates or better fares online.



Discovering Our Planet Together



Extension Details:

Cape Town Extension
\$1995

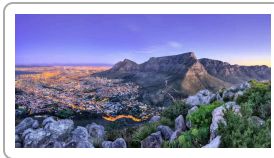
Wild Cape Coast Extension
\$2995

Namibia Desert Extension
\$5795

Sabi Sand Extension
\$4395

Secluded Botswana Photo Expedition Extensions

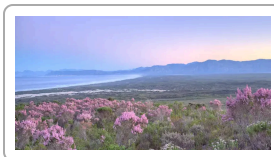
Matchless Wildlife Encounters on an Exclusive Small-Group Photography Safari



Cape Town Extension

Discover one of the world's most entrancing cities and its natural environs. Survey the view from Table Mountain, explore the Cape Peninsula, visit Cape Point Nature Reserve, see penguins at Boulders Beach, and tour the Winelands.

\$1995



Wild Cape Coast Extension

From our luxury ecolodge base on the Grootbos Private Nature Reserve, explore pristine coastal wilderness including the rare Cape Floral plant kingdom and Stony Point penguin colony.

\$2995



Namibia Desert Extension

Namibia's towering sand dunes, arid canyons and desert-adapted wildlife offer a distinct contrast to other southern Africa safari destinations—look for endangered black rhino, desert elephant and more.

\$5795 (+air)



Discovering Our Planet Together



Sabi Sand Extension

An exclusive safari experience on a 160,000-acre private reserve that's one of Africa's best places to spot the famous Big Five—choose among intimate luxury camps and secluded boutique lodges.

\$4395

