



Discovering Our Planet Together



Churchill Polar Bear Photo Expedition

An Expert Photographer-Naturalist Leads This Immersive Journey into the Realm of the Polar Bear



Discovering Our Planet Together

Table of Contents:

Trip Overview	3
Trip Itinerary	4
Trip Accommodations	7
What Makes Nat Hab Different?	8
Make It Private	11
Dates & Pricing Information	12
Trip Extensions	16



Discovering Our Planet Together



Trip Details:

Days

7 Days / Oct–Nov

Price

From \$9995
(+Air)

Physical Requirements
Easy

Churchill Polar Bear Photo Expedition

An Expert Photographer-Naturalist Leads This Immersive Journey into the Realm of the Polar Bear

You won't find another Churchill polar bear photography tour with this much proximity to the King of the Arctic, coupled with our intensive focus on helping you get outstanding photos. Your photo adventure spends three full days on the tundra where polar bears congregate on the shores of Hudson Bay each fall, awaiting freeze-up and the start of their winter hunting season. Custom-designed Polar Rovers take us into the heart of their wild habitat, with plenty of space for equipment and room to maneuver for stunning shots. On-site guidance from our Expedition Leader, who is both an expert naturalist and professional photographer, is complemented by evening lectures on how best to capture Arctic wildlife through the camera's lens—most notably polar bears, but also Arctic fox, Arctic hare and more!

Trip Highlights

Our Polar Rovers have large plate glass windows (and a window seat for every photographer) plus an outdoor observation deck, for the best possible shots!

With decades of collective experience, our professional guides are second to none in expertise as photographers, instructors and naturalists

Spend three full days photographing polar bears on the tundra, increasing opportunities to capture various behaviors and interactions, including mothers with cubs and lone males.



Discovering Our Planet Together



Itinerary At A Glance

Day 1
Winnipeg, Manitoba

Day 2
Winnipeg / Churchill

Days 3 - 5
Polar Bear Photography

Day 6
Churchill—Dog Sledding /
Winnipeg

Day 7
Winnipeg / Depart

Churchill Polar Bear Photo Expedition Itinerary

An Expert Photographer-Naturalist Leads This Immersive Journey into the Realm of the Polar Bear

Day 1: Winnipeg, Manitoba

Arrive in Winnipeg, a former fur-trading post and boomtown for the Canadian Pacific Railway, which today is Manitoba's provincial capital on the eastern edge of the prairie. A transfer is included to the historic Fort Garry Hotel, a prestigious Winnipeg landmark that dates to the opening of the Canadian West. Meet your Expedition Leader and fellow travelers at an orientation dinner this evening.





Discovering Our Planet Together

Day 2: Winnipeg / Churchill

Fly to the small town of Churchill this morning. This hospitable frontier outpost, originally a Hudson's Bay Company fur-trading post, is our base for adventure. Kick it off this evening with a presentation on Arctic photography and our northern environs by our Expedition Leader, who is both an accomplished photographer and seasoned naturalist guide.

Days 3 - 5: Polar Bear Photography

Rise early to board our custom Polar Rovers, specialty vehicles that allow us to get within prime photography range of polar bears on the open tundra. Although each vehicle can accommodate up to 35 passengers, we take a maximum of 16, ensuring that everyone has a window seat, plenty of space for camera gear, and room to shoot comfortably without interference. For three full days, we spend our daylight hours on the tundra, photographing polar bears roaming the edge of Hudson Bay waiting for the ice to freeze and their winter seal-hunting season to begin. From the warm interior of our Rover, we may see mothers with cubs and young adult males play-fighting. A large adult male may turn his attention toward us, sometimes approaching within feet or even lifting his massive paws onto the side of our vehicle to peer inside. The outdoor observation platform offers an open vantage point for exceptional photos.

On the wide-open expanse of the tundra, we may spy other northern wildlife, too, including Arctic fox, Arctic hare, snowy owl, ptarmigan and gyrfalcon. In addition to sharing photography advice, our Expedition Leader provides a captivating interpretation of the animal behavior and natural phenomena we observe. By late afternoon, if the weather is relatively clear, we often enjoy vivid sunsets that linger a long time at this latitude, offering stunning photo opportunities. As dusk descends over the austere northern landscape, we return to town for dinner and presentations on photography, wildlife and local cultures. Occasionally, we're graced with the good fortune to see the aurora borealis on a cloudless night, and if this is the case, we'll head away from the lights of town to capture photos of this wondrous event in total darkness.

Day 6: Churchill—Dog Sledding / Winnipeg

Our return flight is scheduled to depart in the mid- to late afternoon, in order to provide as much time as possible to explore more of Churchill today. A highlight this morning is an authentic dog sled excursion. Just outside town, we meet a local musher and his team, spending time with the frisky dogs before being pulled behind them on an exhilarating ride through the boreal forest. And, if time permits, those who wish may opt to visit nearby Cape Merry, a promising spot for photographing Arctic fox, hare and birdlife. Or, stay in town for some last-minute shopping to pick up local handicrafts and souvenirs. Another option is a helicopter flight over the tundra, for dramatic aerial views of our environs and the possibility of spotting polar bears from the air. Enjoy a farewell lunch in Churchill before we depart, followed by an evening reception in Winnipeg.



Day 7: Winnipeg / Depart

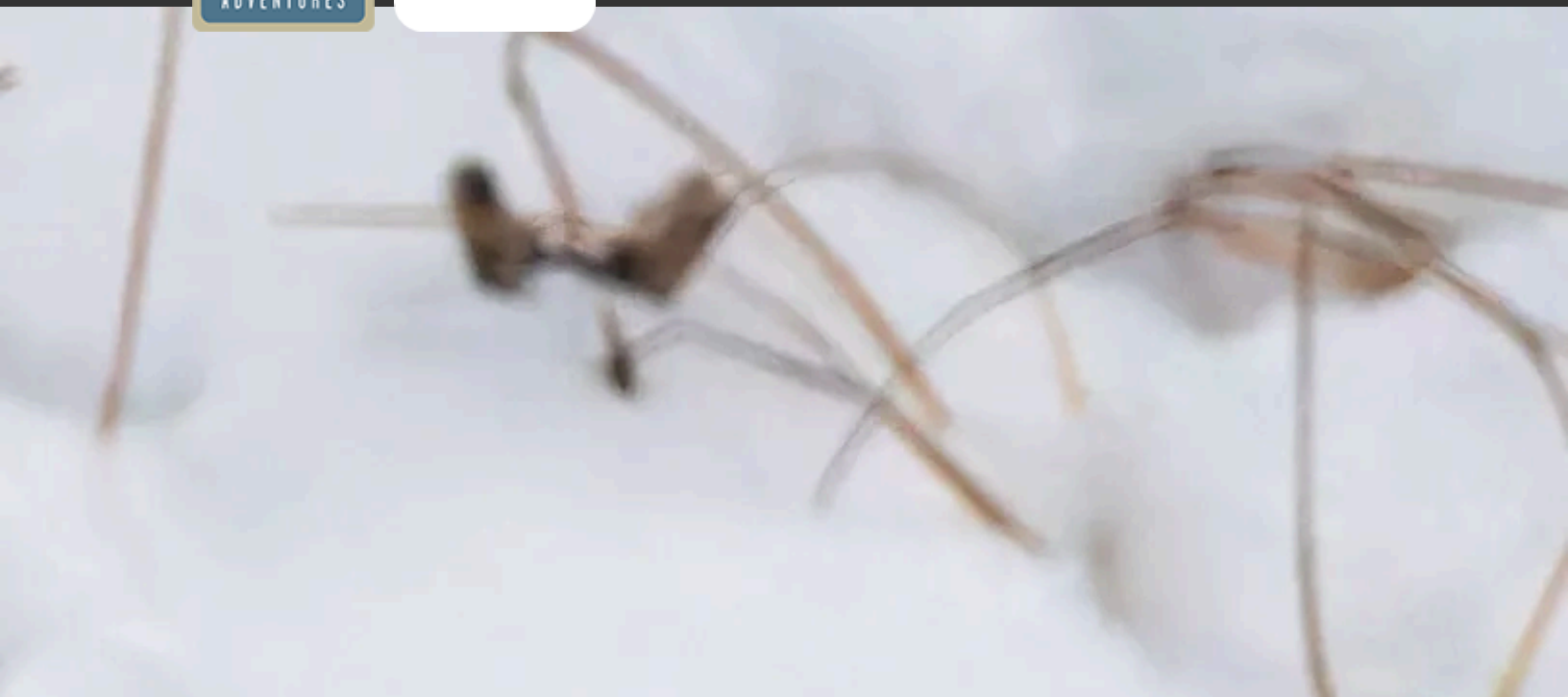
After breakfast, transfer to the airport for flights home.

An important note on polar bear viewing: Since 1989, we have run approximately 1,500 departures to Churchill to view polar bears, and we've missed seeing them on just a handful of occasions. Some of our sightings are up close, and others are from afar, or even from a helicopter. It's important to remember that while there is no better opportunity to see polar bears in the wild than our Churchill trips offer, the experience is weather-dependent. That means viewing polar bears—and the distance at which we may see them—is unpredictable and not guaranteed.

Check out details on **the ebbs and flows of the Churchill polar bear viewing season** .



Discovering Our Planet Together



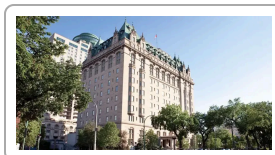
Accommodation Details:

Winnipeg & Churchill Hotels

For detailed descriptions, visit nathab.com/polar-bear-tours/polar-bear-photo-expedition/accommodations

Churchill Polar Bear Photo Expedition Accommodations

An Expert Photographer-Naturalist Leads This Immersive Journey into the Realm of the Polar Bear



Winnipeg & Churchill Hotels

In Winnipeg, stay at the historic Fort Garry Hotel, an elegant landmark built by the Grand Trunk Pacific Railway in 1913. In remote Churchill, our simple hotels are clean, comfortable and centrally located.



There is a Difference in Polar Bear Photo Tours: Choose Wisely!

Choosing the right polar bear photo tour is crucial if you're set on getting once-in-a-lifetime images. And getting the image comes down to commitment. When you're investing in a nature photography trip as significant as this one, our promise of a superior experience makes all the difference. That's why we want you to be aware of some important facts before you make that key decision:

1

Exclusive Permits Allow Us to Go Where Others Cannot The ability to access the permit-only Churchill Wildlife Management Area (WMA) is a vital part of a rewarding polar bear adventure, particularly one focused on photography. While polar bears can appear anywhere in the Churchill region, the occurs in the WMA. With our partner Great White Bear Tours, we hold a coveted permit to enter this carefully controlled area. If you want the best possible polar bear photos, you must choose a company that can get you closest to the greatest number of bears.

2

Our Polar Rovers are the Best Tundra Exploration Vehicles, Hands Down

Unusually rugged with an uncommon ability to travel where other vehicles cannot (thanks to our innovative drive train), our exclusive Polar Rover is a truly impressive means of facilitating your polar bear photo opportunities. With large plate glass windows and a window seat for every photographer, an angled front windshield that affords you a clear view of polar bears in front of us, plus a rear outdoor platform, you won't find another vehicle that's comparable! Add interior heating and a flush toilet, and your comfort is ensured.

3

Our Steel Mesh Deck Lets You Photograph Polar Bears at Your Feet!

Since polar bears sometimes like to walk directly beneath the rear viewing platform on our elevated vehicles, each Polar Rover is outfitted with steel-mesh flooring built into the observation deck—offering the chance to watch polar bears sometimes just inches away! Many travelers tell us that this feature, exclusive to our vehicles, provided them with a highlight of their trip.

4

The Smallest Groups for the Finest Nature Photography Experience

With nature travel, especially when photography is the focus, small groups are essential. That's why we limit our group size to approximately 16 guests aboard one Polar Rover—less than half the capacity they are designed to carry. This ensures you have plenty of room for your gear, and to angle for the shots you want without intrusion by other travelers.



Discovering Our Planet Together

5

Spend Three Full Days on the Tundra

Our Photo Expeditions maximize the time you spend in the polar bear's wild domain. You'll spend three full days exploring the tundra as you look for polar bears, Arctic fox, ptarmigan and, on rare occasions, snowy owl. More unhurried time on your Arctic safari provides a more chances to get the shots you covet.

6

Our Private Chartered Plane Maximizes Your Time for Photography

We charter our own private plane to fly you directly from Winnipeg to Churchill at a time that suits our convenience. We'd know you'd rather spend time exploring the tundra and photographing wildlife instead of dealing with less-than-optimal flight schedules and waiting in line for airport security screenings.

7

The Finest Photographer-Naturalist Guides Whether you're a beginner looking for full instruction, an intermediate looking for a few tips, or an expert looking for an accomplished comrade to shoot alongside, our Photo Expedition guides are second to none. With decades of collective experience, annual in-depth training and access to special resources from WWF scientists, they are constantly by your side to share their knowledge. Our philosophy on guiding is simple: Any nature adventure is only as good as the guide, so we simply must provide the best! **See Photo Expedition Leader bios** and traveler comments regarding the quality of our leaders.

8

Dog Sledding Included on Every Trip

Polar bears may be our focus, but sled dogs provide an engaging photography subject, too. We include a personal visit with a local dog musher and his huskies, plus a thrilling chance to race through the boreal forest behind the team! Early in the season, if snow cover is insufficient, we'll be pulled behind the dogs in a wheeled cart.

9

Cultural Interactions Enhance Our Adventures

After years of building relationships with the people of Churchill, we are able to offer our guests a chance to enjoy exclusive presentations by respected elders of local Indigenous cultures. These storytellers are some of the last in their communities, and our small groups enjoy a personal perspective on northern lifestyles most visitors aren't privy to.

10

Our Quality-Value Guarantee Ensures Your Superior Experience

With Natural Habitat Adventures, you receive our exclusive guarantee that clearly states that we will meet the high expectations set forth in our promotional materials. To our knowledge, this is the most ambitious guarantee made by any adventure travel company.



Discovering Our Planet Together

11

Feel Good About Your Carbon-Neutral Journey

We care deeply about our planet, as we know you do. When you travel with us, the carbon emissions from your trip are 100% offset—including your round-trip flights from home. Natural Habitat Adventures is the world's first carbon-neutral travel company.

12

Natural Habitat Adventures is World Wildlife Fund's Travel Partner

Because of our commitment to environmentally friendly travel, as well as the exceptional quality of our adventures, World Wildlife Fund, the world's leading environmental conservation organization, has named Natural Habitat Adventures as its worldwide travel partner, a designation that makes us exceedingly proud!



Discovering Our Planet Together

Make It Private with Your Family or Friends

Travel privately, exclusively with your immediate family, multi-generational family or group of friends. And when you choose a private departure, you're assured the most exclusive and authentic *Churchill Polar Bear Photo Expedition* on offer. Request your private departure by completing the form below.

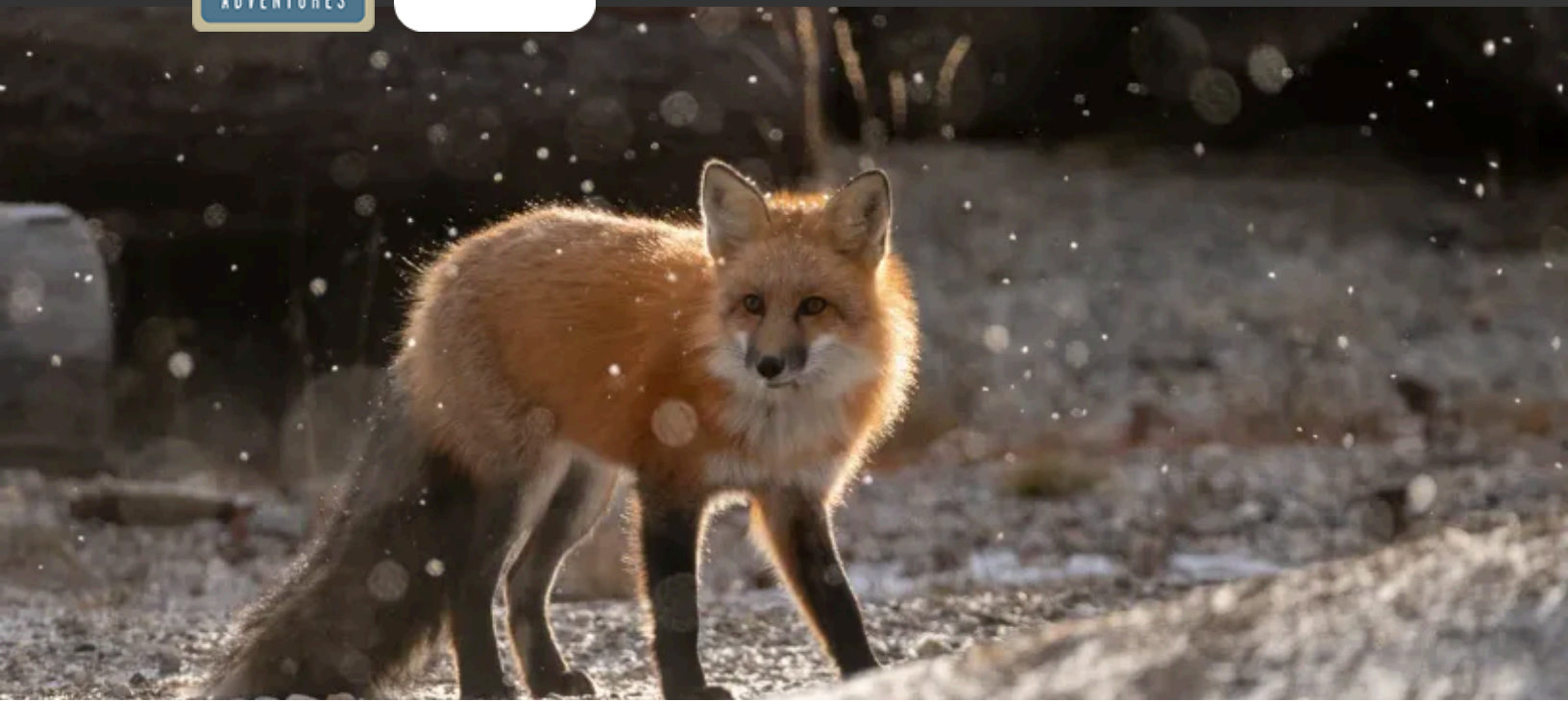
Please note that on Churchill Polar Bear Photo Expedition Make It Private departures we require a minimum group size of 8 travelers.

Also, please be aware that your per-person cost on a Make It Private trip will vary depending on the number of travelers in your group and may be as much as 10%-30% higher (ship-based trips may be even higher) than our normal trip cost unless you fill the trip.

This **Make It Private** option is available on nearly every Nat Hab trip for family and friend groups. Call an Adventure Specialist at 800-543-8917 or look for the "Make It Private" icon in the **pricing section** of a trip online at nathab.com to see prices based on your specific group size.



Discovering Our Planet Together



Dates & Pricing Summary:

Prices:
From \$9995
(+Air)

Group Size:
Limited to 16
Travelers

Physical Requirements:
Easy

Churchill Polar Bear Photo Expedition Dates, Pricing & Info

An Expert Photographer-Naturalist Leads This Immersive Journey into the Realm of the Polar Bear

2025 Departures

Departure	Return	Notes
Oct 26, 2025	Nov 1, 2025	
Oct 27, 2025	Nov 2, 2025	
Oct 28, 2025	Nov 3, 2025	
Nov 2, 2025	Nov 8, 2025	
Nov 3, 2025	Nov 9, 2025	
Nov 4, 2025	Nov 10, 2025	
Nov 9, 2025	Nov 15, 2025	
Nov 10, 2025	Nov 16, 2025	
Nov 12, 2025	Nov 18, 2025	



Discovering Our Planet Together

Dates & Pricing Summary:

Prices:
From \$9995
(+Air)

Group Size:
Limited to 16
Travelers

**Physical
Requirements:**
Easy

2026 Departures

Departure	Return	Notes
Oct 26, 2026	Nov 1, 2026	
Oct 27, 2026	Nov 2, 2026	
Oct 28, 2026	Nov 3, 2026	
Nov 2, 2026	Nov 8, 2026	
Nov 3, 2026	Nov 9, 2026	
Nov 4, 2026	Nov 10, 2026	
Nov 9, 2026	Nov 15, 2026	
Nov 10, 2026	Nov 16, 2026	
Nov 12, 2026	Nov 18, 2026	

2027 Departures

Departure	Return	Notes
Oct 24, 2027	Oct 30, 2027	
Oct 26, 2027	Nov 1, 2027	
Oct 28, 2027	Nov 3, 2027	
Nov 1, 2027	Nov 7, 2027	
Nov 3, 2027	Nov 9, 2027	
Nov 4, 2027	Nov 10, 2027	
Nov 9, 2027	Nov 15, 2027	
Nov 10, 2027	Nov 16, 2027	
Nov 12, 2027	Nov 18, 2027	



Discovering Our Planet Together

Pricing

2025 Prices

➤ Trip Price

7-Day Photo Expedition: \$9995 (+internal air)



Internal Air Cost: \$1497 per person (this will be listed separately on our invoicing)

Single Occupancy: For a single room add \$1295. **Click here** to learn how you can avoid the single supplement.

Deposit: \$500 per person

Trip prices are per person based on double occupancy and are given in U.S. dollars.

Please read our Payment & Refund Policy here.

2026 Prices

We're still in the process of confirming 2026 pricing. Please contact an Adventure Specialist for more details: 800-543-8917.

2027 Prices

We're still in the process of confirming 2027 pricing. Please contact an Adventure Specialist for more details: 800-543-8917.

Included

- **Trip price includes:** Accommodations, services of Nat Hab's professional Expedition Leader(s) and assistants, Polar Rover excursions, dog sledding excursion, evening wildlife and cultural presentations, all meals from dinner on Day 1 through breakfast on final day, including the use of a parka and boots during your trip, some gratuities, airport transfers on Day 1 and final day, all activities and entrance fees, all taxes, permits and service fees.
- **Internal air cost includes:** Round-trip private charter flights from Winnipeg to Churchill (this will be listed separately on our invoicing).

Not Included

Travel to and from the start and end point of your trip, alcoholic beverages, some gratuities, passport and visa fees (if any), optional activities, items of a personal nature (phone calls, laundry and internet, etc.), airline baggage fees, airport and departure taxes (if any), optional travel protection and medical evacuation insurance.



Physical Requirements

Easy

A polar bear tour with Natural Habitat Adventures requires very little walking. Travelers must be able to walk up/down stairs. Our Polar Rover vehicles, designed to travel over the tundra for polar bear observation, can sometimes offer a bumpy ride. Travelers must be prepared for below-freezing temperatures and slippery surfaces.

On custom or private departures with smaller groups, our ability to accommodate varying levels of physical abilities or interests is limited, since these trips are staffed with a single Expedition Leader who may be assisted, pending availability, by local guides.

Important Information About This Trip

Our Photo Expeditions include three full days photographing bears and exploring the tundra by Polar Rover. In the evenings, our guides share their knowledge of the tundra ecosystem, polar bears and other local wildlife while coaching guests in how to best capture varied subjects in their photos

Regarding polar bears: They are typically in the Churchill area year-round. The highest concentration occurs in October and November as the bears gather to await freeze-up on Hudson Bay and the beginning of their winter hunting season. But bear viewing is never predictable. Sometimes the best viewing happens at the beginning of the season, sometimes it occurs in the middle, and sometimes it's at the end—we never know for sure. Once the bay freezes, many of the bears depart. Historically, this has happened in early December, but an unusually early cold spell can sometimes occur, hastening their departure to the ice. Please be aware that conditions vary, and polar bears here live wild and free: we can never guarantee that you will see them or promise exactly what your experience will be.

Meals

Please understand that the meals in Churchill are specially planned and prepared for well in advance. With ample notice, dietary requirements due to serious medical conditions or strict personal restrictions can be met but must be adhered to during the trip. If you have a very restricted diet, we recommend bringing your own preferred snacks along with the understanding that certain foods are limited in this remote part of the world.

Mandatory Insurance

Since the areas we travel to are remote and wild (that's why we go there!), we require that all guests have, at minimum, medical evacuation insurance for this program. This is for the safety of all guests. We require that your chosen independent insurance plan includes at least \$250,000 in medical evacuation coverage.

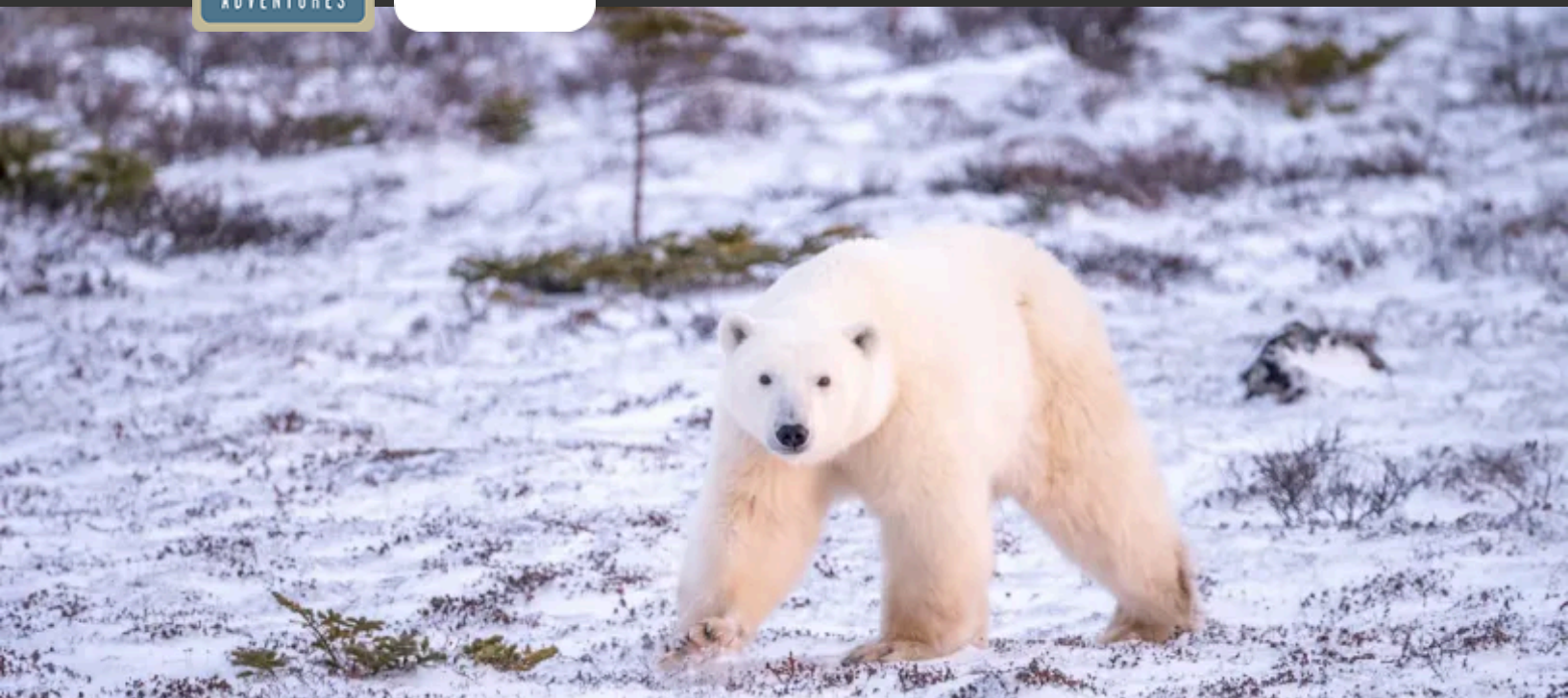
To protect your investment and to provide peace of mind while you travel, we also strongly recommend purchasing comprehensive travel insurance. Plans may cover everything from medical treatment to trip cancellations and delays and lost luggage. Please contact our office if you would like more information about the medical evacuation and comprehensive travel insurance policies we offer by calling 800-543-8917.

Getting There & Getting Home

In case of flight or weather delays, we recommend that you arrive a day early. Please schedule your flights to arrive by 5 pm in order to attend a 7 pm orientation dinner on Day 1 of your program. You are free to depart at any time on the final day.



Discovering Our Planet Together



Extension Details:

Northern Tundra Helicopter
Adventure
\$690

Churchill Polar Bear Photo Expedition Extensions

An Expert Photographer-Naturalist Leads This Immersive Journey into the Realm of the Polar Bear



Northern Tundra Helicopter Adventure

Our exclusive helicopter flight over the tundra is an exhilarating way to view northern wildlife. Track migrating caribou, Arctic fox and the mighty polar bear from an exciting aerial perspective.

\$690



Natural Habitat & WWF: Discovering Our Planet Together

Natural Habitat Adventures • PO Box 3065 • Boulder, CO USA 80307

USA & Canada: 800-543-8917 • International: 303-449-3711

© 2025 Natural Habitat Adventures

WWF's membership travel program is operated by Natural Habitat Adventures (Nat Hab). To date, Nat Hab has provided more than \$6 million in support of WWF's mission and will continue to give 1% of gross sales plus \$175,000 annually through 2028. WWF® and ©1986 Panda Symbol are owned by WWF. All rights reserved.