



Discovering Our Planet Together



New Zealand Nature Explorer

A Small-Group Immersion in the Scenic Splendors of New Zealand's South Island



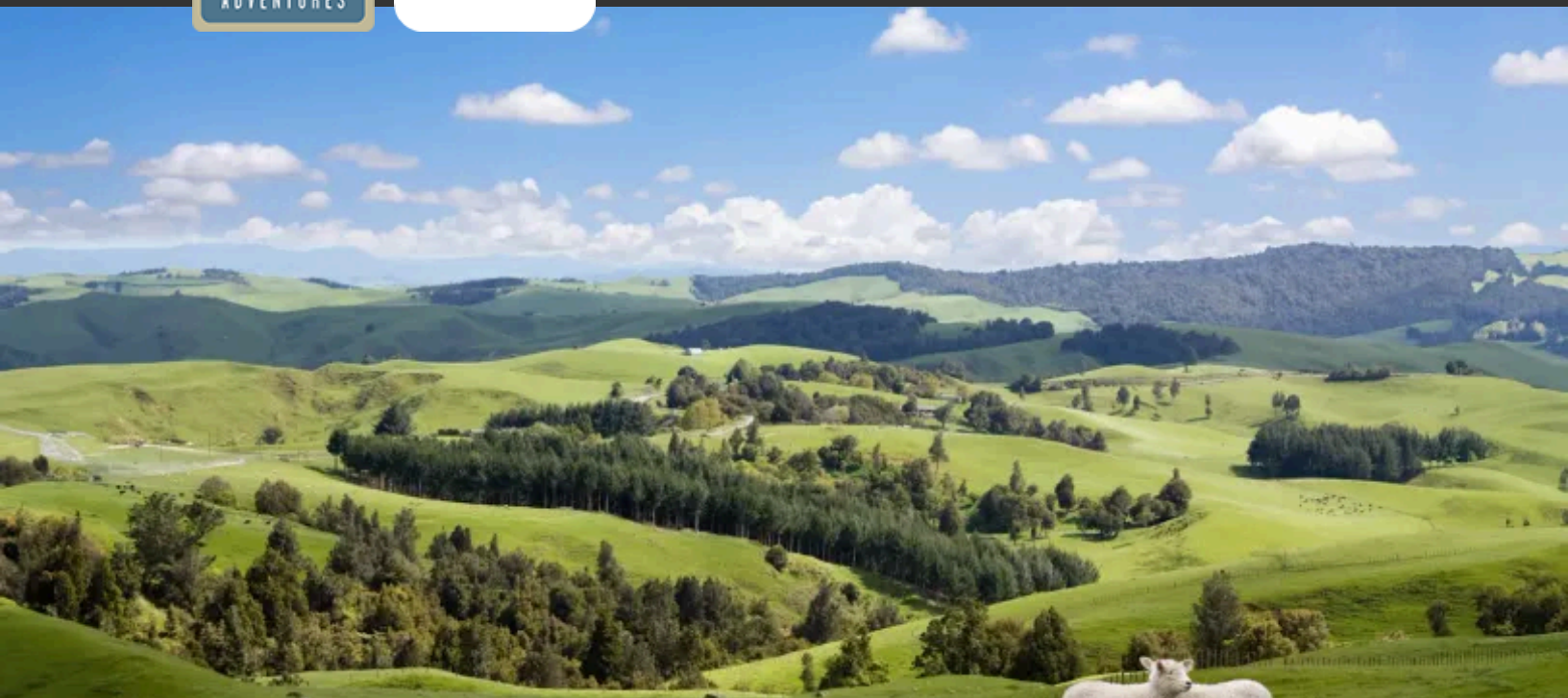
Discovering Our Planet Together

Table of Contents:

Trip Overview	3
Trip Itinerary	4
Trip Accommodations	10
What Makes Nat Hab Different?	12
Make It Private	14
Dates & Pricing Information	15
Trip Extensions	23



Discovering Our Planet Together



Trip Details:

Days

12 Days / Sep–Mar

Price

From \$14195
(+Air)

Physical Requirements
Moderate

New Zealand Nature Explorer

A Small-Group Immersion in the Scenic Splendors of New Zealand's South Island

Among travelers who covet spectacular natural scenery, New Zealand is legendary. Our focus is the South Island, a land of topographic extremes, from seaside rain forests and sapphire lakes to ice-crowned peaks, active glaciers and frigid fjords. On a dramatic itinerary that winds from alpine heights to Pacific shores, we are immersed in nature at its showiest. Explore lush mountains and deep gorges in Fiordland National Park, hike on remote Mou Waho Island in Lake Wanaka, and walk among towering ferns to wild Monro Beach. Within these diverse landscapes, we find rare and intriguing creatures such as the flightless buff weka, yellow-eyed penguins and the famous brown kiwi. We also experience the hospitality New Zealanders are renowned for as we meet sheep farmers, learn about Maori culture, and find a bit of Scottish heritage in the South Pacific.

Trip Highlights

From secluded ecolodges, search for rare birds on rain forest hikes, paddle a kayak on a mountain lake, and stargaze beneath some of the darkest skies on Earth

On little-visited Stewart Island, a Dark Sky Sanctuary, look for elusive kiwis on a guided night walk, and view breeding seabirds on a private boat excursion

Aboard our chartered boat, cruise this glacial-carved fjord where waterfalls plummet in silver ribbons from sheer peaks, then fly over the sound to Queenstown



Discovering Our Planet Together



Itinerary At A Glance

Day 1

Dunedin, New Zealand

Day 2

Catlins / Invercargill / Stewart Island

Day 3

Stewart Island / Ulva Island—
Private Boat Trip

Day 4

Riverton / Te Anau

Day 5

Fiordland National Park / Milford Sound Private Cruise / Scenic Helicopter Flight / Wanaka

Day 6

Lake Wanaka—Private Boat Tour to Mou Waho Island

Day 7

Regenerative Farm Tour / Haast Pass / Lake Moeraki

New Zealand Nature Explorer Itinerary

A Small-Group Immersion in the Scenic Splendors of New Zealand's South Island

Day 1: Dunedin, New Zealand

Our New Zealand nature adventure starts in Dunedin. Dunedin boomed during a series of gold rushes in the 19th century and today remains one of New Zealand's most important commercial centers. Gather for a group orientation at 2 pm, then set off with our Expedition Leader on a tour to view albatross and visit the Otago Peninsula Eco Restoration Alliance, formerly known as Penguin Place, a private conservation reserve and rehabilitation center for endangered yellow-eyed penguins. The reserve was founded in 1985 when just eight breeding pairs inhabited the property. This penguin species, found only in New Zealand, is one of the rarest in the world, with fewer than 4,000 remaining. This evening, we gather for a welcome dinner at Larnach Castle, built in 1871.





Discovering Our Planet Together

Itinerary At A Glance

Day 8

Exploring Lake Moeraki & Monro Beach

Day 9

Westland Tai Poutini National Park / Arthur's Pass

Day 10

Arthur's Pass—Hiking & Kayaking

Day 11

Arthur's Pass / Christchurch

Day 12

Christchurch / Depart

Day 2: Catlins / Invercargill / Stewart Island

This morning we set off through the little-visited Catlins, a rugged coastal region that is one of the most sparsely populated areas of New Zealand. Hemmed by a rockbound shoreline, this windswept region holds lush woodlands, a petrified forest, hidden lakes and cascading waterfalls. Large tracts of rain forest are filled with native flora including tree ferns, rata, kahikatea, miro, kamaha and silver beech, while the coastline is defined by stark cliffs, sea caves, rock stacks and sandy bays. Wildlife is plentiful—keep an eye out for seabirds and forest-dwelling birds including tui, bellbird, fantail and native pigeon, plus New Zealand sea lions, fur seals and Hector's dolphins offshore.

Reaching Invercargill, New Zealand's southernmost city, we board a short flight this afternoon to idyllic Stewart Island, 19 miles offshore, where we spend two nights. Much of this rugged granite island lies within Rakiura National Park, whose Maori name means "Land of Glowing Skies." Its rain forests shelter many native plants, which we discover on nature walks through the unique habitat. The island is a haven for birds, and we listen for the songs of parakeets, bellbirds, tui and kaka. And of course we'll hope to spy the elusive brown kiwi on a guided night walk—Stewart Island is one of the best places in New Zealand to seek them. And if we're very lucky, we might catch a glimpse of the aurora australis in the southern sky.

Day 3: Stewart Island / Ulva Island—Private Boat Trip

On a private boat excursion off Stewart Island this morning, view the multitudes of pelagic seabirds that live and breed in these coastal waters. We expect to see a great variety at close range—albatrosses, shearwaters, shags, skua and several penguin species including yellow-eyed, blue and Fiordland crested. Take an intimate nature walk with a local naturalist who works closely with Stewart Island native and birder extraordinaire Ulva Goodwillie, the namesake of the Ulva Island sanctuary.

On Ulva, just a short boat ride away from neighboring Stewart Island, explore pristine trails and beaches, observing rare bird species that no longer exist on the main islands, such as the South Island saddleback and mohua (yellowhead). Ulva has been carefully managed to be free of invasive predators and pests since 1997, allowing native wildlife to flourish as it did prior to the arrival of introduced species. The small island has also never been logged, offering visitors an immersion in an untouched rain forest that provides shelter for Ulva's healthy bird population.



Discovering Our Planet Together

Day 4: Riverton / Te Anau

After a short flight back to the mainland from Riverton, continue this morning to Te Anau, following the Southern Scenic Route that connects the rugged south coast with the eastern edge of Fiordland National Park. Te Anau is a picturesque village on Lake Te Anau, the largest of New Zealand's southern glacial lakes, and the gateway to the national park. Backdropped by the Kepler and Murchison ranges, most of Lake Te Anau lies within the boundaries of Fiordland National Park and the Te Wahipounamu World Heritage Site. This afternoon we visit Te Anau Bird Sanctuary to see the rare flightless takahe, an endemic bird with blue-black and olive-green plumage and a large red bill. The sanctuary is one of two that have been integral to the success of New Zealand's Takahe Recovery Program, which has pioneered conservation techniques to bring this endangered bird back from the very brink of extinction. As of 2023, about 500 are in existence. The sanctuary is also home to indigenous kaka (a mountain parrot species), parakeets, pateke (brown teal), tui, wood pigeon and more.

Day 5: Fiordland National Park / Milford Sound Private Cruise / Scenic Helicopter Flight / Wanaka

This morning, one of the world's most scenic drives awaits: follow the winding Milford Road as we travel through Fiordland National Park to the sea. It's no wonder this mythical-looking land of pointed peaks and sheer rock walls, high waterfalls and drifting mists was chosen as one of the main settings for the film adaptation of J.R.R. Tolkien's *The Fellowship of the Ring*. Once we reach the head of the fjord that is Milford Sound, board a private chartered boat for a scenic cruise around this glacier-carved wonderland. As we ply the steep-walled inlets that wind beneath a perpetual cap of snow and ice, watch ribbons of water plummet from above, and look for fur seals, crested penguins and bottlenose dolphins. If we're lucky, the mists will clear enough to reveal pyramid-shaped Mitre Peak rising two-thirds of a mile straight out of the sea. Our naturalist Expedition Leader, an expert on New Zealand wildlife and geography, interprets all we see.

Just when you thought the scenery could not be surpassed, it's time to board a helicopter for a spectacular flight to Queenstown. As we lift off, view Milford Sound from the air, with multiple waterfalls pouring down the near-vertical peaks surrounding the fjord. We land at Lake Quill and Tutuko Glacier before we are eventually dropped off in Queenstown. From here, it's less than hour to Wanaka, as more scenic drama unfolds with every bend in the road. Skirt Lake Wakatipu and climb the Crown Range Road, New Zealand's highest paved highway, where a panorama of the aptly named Remarkables Range unfolds. Once we pass the historic hamlet of Cardrona, site of the Central Otago Gold Rush of the 1860s, the vast blue expanse of Lake Wanaka comes into view, portal to Mount Aspiring National Park. The basin filled by Lake Wanaka was gouged out by the Wanaka Glacier, born high in the ice fields that crown the jagged peaks in the distance. In the Maori language, Wanaka means "renewal of the soul"—exactly what our time here offers.



Discovering Our Planet Together

Day 6: Lake Wanaka—Private Boat Tour to Mou Waho Island

Our day begins with a 3-hour private boat excursion on Lake Wanaka. Cruising into the sparkling waters, we quickly leave any sign of civilization behind, surrounded only by tawny hills rising on all sides, with higher peaks beyond. Step ashore on remote Mou Waho Island, a predator-free nature reserve that's home to the rare flightless buff weka—a curious, amiable bird that has been extinct on the mainland since 1920. A guided bush walk to the top of the island reveals a hidden lake on the summit, a photogenic spot where we'll enjoy a cup of afternoon tea with the panorama of the Southern Alps on display before us. Our tour of the island reveals an impressive conservation success story, as we find out how invasive species—including the weasel-like stoat—were eradicated to preserve the buff weka as well as the mountain stone weta, a prehistoric insect as big as a person's thumb.

Later this afternoon, enjoy a short hike to explore some of the Wanaka environs on foot – or choose to relax or wander the town on your own before dinner. After nightfall, step outside and look up: the Wanaka region has some of the darkest, starriest night skies on Earth.

Day 7: Regenerative Farm Tour / Haast Pass / Lake Moeraki

Just outside Wanaka this morning, we stop at Lake Hawea Station for a private regenerative farm tour. Meet the animals, learn about the station's approach to climate-positive and restorative agricultural practices, and see how the farm supports the environment and contributes to healthier animals and wool fiber. We might even get to meet the shepherd and his 17 dogs!

Then, leaving Wanaka's golden mountains behind, traverse moss-draped beech forest as we cross Haast Pass this afternoon into the heart of the West Coast glacier country. We stop to take in the view at the top of the pass, which is one of three main passages across the Southern Alps and was once an important Maori trading route. The lush scenery is glorious, and trails lead from the road's edge along turquoise streams into the rain forest to dramatic waterfalls, including Thunder Falls where we stop for a nature walk to view Haast River. Paralleling the river as we descend the pass, we ultimately reach the ocean, where we stop to walk through Ships Creek Ancient Forest. Among windswept sand dunes, we get a real taste of the wild West Coast and another opportunity to view the Hector dolphin, the world's smallest marine dolphin endemic to New Zealand. Turning north, we follow the dramatic coastal route before cutting inland to Lake Moeraki for a two-night stay at a secluded wilderness lodge in this exceptionally scenic region, which remains lightly visited.



Discovering Our Planet Together

Day 8: Exploring Lake Moeraki & Monro Beach

Lake Moeraki lies at the heart of a natural paradise in the Te Wahipounamu–South West New Zealand World Heritage Area. Virtually unchanged since the Polynesians discovered New Zealand, this dramatic landscape has been shaped by successive glaciations into fjords, rocky coastlines, sheer cliffs, waterfalls, lakes, rivers, ancient forests and volcanic sand beaches. From our lodge base, explore the natural environs on locally guided excursions, including kayaking on Lake Moeraki and a walk among head-high ferns to wild Monro Beach. Look for the kea, the world's only endangered alpine parrot, often seen in this area.

Located far from urban light pollution, we take advantage of Lake Moeraki's cover of darkness on a guided night walk. A star talk is included, as well as a chance to look for glowworms, whose bioluminescent pearl strands dangle from the trees. October and November departures include a private outing to see rare Tawaki penguins, found only on the southwest coast of New Zealand. Also called Fiordland crested penguins, these are the only penguins that live in the rain forest. About 2,000 pairs remain, with 10% of the population found along the shores of Lake Moeraki. January to March departures include a rain forest hike with conservation biologist Dr. Gerry McSweeney, who founded Wilderness Lodge where we stay – we'll discover thousand-year-old trees, myriad ferns and orchids, and search for birdlife in the protected natural environs.

Day 9: Westland Tai Poutini National Park / Arthur's Pass

More of New Zealand's magnificent scenery unfolds as we travel along the west coast into glacier country. Two World Heritage Site national parks, Aoraki Mount Cook and Westland Tai Poutini, encompass many of New Zealand's highest mountains, turquoise lakes, braided rivers and massive glaciers, including the Tasman, Franz Josef and Fox. Spawned in the ice fields of the Southern Alps, they wind down like frozen highways into primeval rain forest, almost reaching the ocean.

We stop at Hokitika, a historic river port born out of the 1860 gold rush. Today, the laid-back small town is known for an indigenous greenstone called pounamu, or New Zealand jade, prized by the Maori for its strength, durability and beauty, and used for weapons, tools and personal ornaments. Walk along the sandy beach where plentiful driftwood is formed into imaginative sculptures before continuing to Westland Tai Poutini National Park. Heading inland, our route traverses the Craigieburn Range, where endemic scree plants and giant weta insects thrive. Our destination is Arthur's Pass Wilderness Lodge, a deluxe ecolodge set amid mountain beech forest and surrounding Arthur's Pass National Park. Keep an eye out here for the kea, the endangered alpine parrot endemic to this part of New Zealand and often seen in this area.



Discovering Our Planet Together

Day 10: Arthur's Pass—Hiking & Kayaking

Our lodge lies at the heart of a spectacular 4,000-acre property where half the land is dedicated to protecting rare plants and animals and the other half is a working sheep station, where some 3,000 sheep are raised for fine merino wool. During a full day of exploration, we learn about the region's natural history and agricultural heritage, gaining a firsthand look at sheep farming as we watch agile sheepdogs work, hand-feed tame sheep, and learn about shearing and the production of merino wool, renowned for its use in creating soft, fine-gauge garments, and enjoy a private kayaking excursion on Lake Pearson, a placid high-country lake tucked between steep mountainsides. There are also several options to hike forest trails around the lodge with a local naturalist, getting a close-up look at the mossy beech trees and unusual moa shrubs as you learn about the native ecosystem.

Day 11: Arthur's Pass / Christchurch

On our final morning, take a last leisurely nature walk before departing for Christchurch. New Zealand's oldest city, Christchurch is noted for its British character and Victorian architecture, although much of the latter was lost in the devastating 2010 and 2011 Canterbury earthquakes. A brief city tour includes a stop at Quake City, an exhibit about the natural and human dimensions of the disaster, from which the city is still recovering. This evening, enjoy a farewell dinner together.

Day 12: Christchurch / Depart

Our New Zealand adventure draws to a close as we transfer to the airport for flights home.



Discovering Our Planet Together



Accommodation Details:

Larnach Castle

Kaka Retreat

Bay Motel

Distinction Te Anau

Edgewater Resort

Oakridge Resort

Wilderness Lodge Lake Moeraki

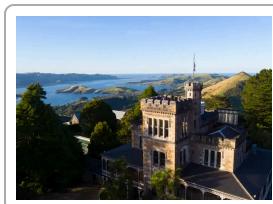
Wilderness Lodge Arthur's Pass

Distinction Christchurch Hotel

For detailed descriptions, visit
nathab.com/asia-adventure-travel/new-zealand-explorer/accommodations

New Zealand Nature Explorer Accommodations

A Small-Group Immersion in the Scenic Splendors of New Zealand's South Island



Larnach Castle

New Zealand's 1871 castle and its award-winning gardens with sweeping sea views are a beacon on the picturesque Otago Peninsula, with a dozen lodge rooms next to the historic stables.



Kaka Retreat

Located in a tranquil spot surrounded by Stewart Island's native bush, the rustic KaKa Retreat enjoys a peaceful atmosphere just a short walk from the beach and town center.



Bay Motel

With views over Halfmoon Bay and the bush-clad hills of Stewart Island, this comfortable hotel at the edge of Rakiura National Park has just nine rooms that overlook the town and water.



Discovering Our Planet Together



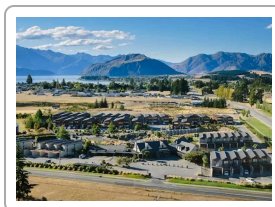
Distinction Te Anau

Overlooking Lake Te Anau and the Fiordland ranges, this recently renovated hotel offers contemporary rooms with plenty of amenities and private balconies with views of the lake.



Edgewater Resort

The only hotel located directly on the shore of Lake Wanaka, the Edgewater features rooms with private balconies or patios with lake and mountain views...plus outdoor hot tubs for a soak under the stars.



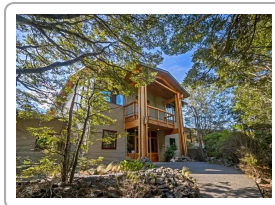
Oakridge Resort

The Oakridge Resort offers well-appointed mountain-view accommodations just a short hop from Lake Wanaka, with nine free-form heated swimming pools on the beautifully landscaped grounds.



Wilderness Lodge Lake Moeraki

At the forefront of nature conservation in this pristine region, this landmark ecolodge was created to demonstrate a sustainable alternative to logging, and today is part of a 6.7 million-acre World Heritage area of lowland rain forest.



Wilderness Lodge Arthur's Pass

In the heart of the Southern Alps, midway between Christchurch and the South Island's west coast, the lodge is surround by a 4,000-acre conservation reserve and high-country merino sheep station.



Distinction Christchurch Hotel

This newly renovated hotel on rejuvenated Cathedral Square in heart of Christchurch is a sanctuary within the city, combining an optimal location with sophistication, warmth and every amenity.



See More of Natural New Zealand, Farther off the Standard Track

Most New Zealand tours focus on the same few popular highlights, like Milford Sound. While we'd never dream of skipping those notable draws, we take you farther into New Zealand's remote reaches, away from crowds, for a Down Under nature odyssey you'll have a hard time finding anywhere else. When you travel with us, you'll enjoy distinctive experiences like these:

1

Fly by Small Plane to Stewart Island to Look for Rare Endemic Wildlife

Few travelers to New Zealand visit lushly forested Stewart Island. But we've included it, with the unusual opportunity to look for the endemic flightless brown kiwi bird on a guided night walk. This island is also a breeding and nesting site for one of the world's rarest birds: the Fiordland crested penguin.

2

Visit the Isolated Nature Sanctuary of Ulva Island

Just minutes from Stewart Island lies wild Ulva Island, a predator-free environment for rare and endangered birds. Explore pristine trails and beaches, observing bird species that no longer exist on the main islands. Not on your standard itinerary!

3

Stargaze Under Some of Earth's Darkest Skies

In two places, we'll have a chance to experience some of the darkest skies on the planet. Look for glowworms and glittering stars on a guided night walk from Lake Moeraki Wilderness Lodge, located near (as the crow flies) Aoraki Mackenzie International Dark Sky Reserve. We also take two night walks on Stewart Island, known as Rakiura in the Maori language, which means "Land of Glowing Skies." If we're lucky, we might even see the aurora australis on the southern horizon.

4

A Small-Group Nature Experience from Beginning to End

Nat Hab has always been committed to the principle that nature is best experienced in small groups. You'll travel in a group of no more than 11 in a private mini-coach—no big tour buses for us. Few other companies come anywhere near our small numbers, which means you have more intimate and authentic experiences wherever we go.

5

Visit a Working Sheep Farm—Not a Tourist Set-Up

It's often said that New Zealand has more sheep than people, and you'll want to get to know more about these famous residents. We visit an authentic working sheep farm to learn from our hosts about the role these animals have played in the country's history, and their current significance.



Discovering Our Planet Together

6

Small Chartered Boats for Private Wildlife Viewing

Most companies send their groups on marine wildlife-watching excursions aboard larger commercial vessels shared with other passengers. With Nat Hab, you'll cruise on privately chartered small boats for a quiet, personal experience of nature, including on Milford Sound.

7

Stay in Nature's Most Dramatic Locations No cookie-cutter chain hotels for us. Although they range from simple to luxurious, our lodgings place us in the most striking natural places New Zealand has to offer. Sleep in a lodge tucked into an open forest clearing and run by a family that traces its farming roots back to 1860. On the shores of Lake Wanaka, enjoy spectacular views of the lake and Southern Alps. In every case, we choose our accommodations for their authenticity, history, atmosphere and proximity to nature.

8

Your Naturalist Expedition Leader Is a New Zealand Native Nat Hab has earned an international reputation for employing the highest-quality Expedition Leaders in the industry. Our guides average 15 years of experience and training, with additional resources and access to WWF's top scientists. On this trip, you'll also have the advantage of a New Zealander as your guide, for a truly personalized interpretive experience. **Read our Expedition Leader bios** and traveler comments regarding the quality of our leaders.

9

Our Quality-Value Guarantee Ensures Your Outstanding Nature Adventure Natural Habitat Adventures is proud to offer our exclusive guarantee that clearly states that we will meet the high expectations we set forth in our promotional materials. To our knowledge, this is the most ambitious guarantee made by any adventure travel company.

10

Feel Good About Your Carbon-Neutral Journey We care deeply about our planet, as we know you do. When you travel with us, the carbon emissions from your trip are 100% offset—including your round-trip flights from home. Natural Habitat Adventures has been the world's first carbon-neutral travel company since 2007.

11

Natural Habitat Adventures is WWF's Travel Partner

Because of our commitment to environmentally friendly travel, as well as the exceptional quality of our small-group nature adventures, World Wildlife Fund, the world's leading environmental conservation organization, has named Natural Habitat Adventures its worldwide travel partner—a designation that makes us exceedingly proud!



Discovering Our Planet Together

Make It Private with Your Family or Friends

Travel privately, exclusively with your immediate family, multi-generational family or group of friends. And when you choose a private departure, you're assured the most exclusive and authentic New Zealand Nature Explorer adventure on offer. Request your private departure by completing the form below.

Please note that on New Zealand Make It Private departures we require a minimum group size of 5 travelers.

Also, please be aware that your per-person cost on a Make It Private trip will vary depending on the number of travelers in your group and may be as much as 10%-30% higher (ship-based trips may be even higher) than our normal trip cost unless you fill the trip.

This **Make It Private** option is available on nearly every Nat Hab trip for family and friend groups. Call an Adventure Specialist at 800-543-8917 or look for the "Make It Private" icon in the **pricing section** of a trip online at nathab.com to see prices based on your specific group size.



Discovering Our Planet Together



Dates & Pricing Summary:

Prices:
From \$14195
(+Air)

Group Size:
Limited to 11
Travelers

Physical Requirements:
Moderate

New Zealand Nature Explorer Dates, Pricing & Info

A Small-Group Immersion in the Scenic Splendors of New Zealand's South Island

2025 Departures

Departure	Return	Notes
Sep 30, 2025	Oct 11, 2025	Pair with our Australia South trip
Oct 11, 2025	Oct 22, 2025	
Oct 18, 2025	Oct 29, 2025	
Oct 29, 2025	Nov 9, 2025	Pair with our Australia South trip
Nov 7, 2025	Nov 18, 2025	Pair with our Ultimate Australia trip
Nov 16, 2025	Nov 27, 2025	Pair with our Australia South trip
Dec 4, 2025	Dec 15, 2025	
Dec 9, 2025	Dec 20, 2025	Pair with our Australia South trip

2026 Departures

Departure	Return	Notes
Jan 10, 2026	Jan 21, 2026	Pair with our Australia South trip



Discovering Our Planet Together

Dates & Pricing Summary:

Prices:
From \$14195
(+Air)

Group Size:
Limited to 11
Travelers

Physical Requirements:
Moderate

Departure	Return	Notes
Jan 18, 2026	Jan 29, 2026	
Jan 23, 2026	Feb 3, 2026	Pair with our Australia South trip
Jan 31, 2026	Feb 11, 2026	Pair with our Australia South trip
Feb 2, 2026	Feb 13, 2026	Pair with our Australia South trip
Feb 13, 2026	Feb 24, 2026	Pair with our Australia South or Ultimate Australia trip
Feb 28, 2026	Mar 11, 2026	Pair with our Australia South or Ultimate Australia trip
Mar 15, 2026	Mar 26, 2026	Pair with our Ultimate Australia trip
Mar 20, 2026	Mar 31, 2026	Pair with our Australia South or Ultimate Australia trip
Oct 1, 2026	Oct 12, 2026	Pair with our Australia South trip
Oct 5, 2026	Oct 16, 2026	Pair with our Australia South trip
Oct 20, 2026	Oct 31, 2026	Pair with our Australia South or Ultimate Australia trip
Oct 24, 2026	Nov 4, 2026	Pair with our Australia South trip
Nov 2, 2026	Nov 13, 2026	Pair with our Australia South or Ultimate Australia trip
Nov 8, 2026	Nov 19, 2026	
Nov 12, 2026	Nov 23, 2026	Pair with our Australia South or Ultimate Australia trip
Dec 1, 2026	Dec 12, 2026	Pair with our Ultimate Australia trip
Dec 5, 2026	Dec 16, 2026	

2027 Departures

Departure	Return	Notes
Jan 16, 2027	Jan 27, 2027	Pair with our Australia South trip
Jan 20, 2027	Jan 31, 2027	
Jan 24, 2027	Feb 4, 2027	Pair with our Australia South trip
Jan 28, 2027	Feb 8, 2027	Pair with our Australia South trip
Feb 2, 2027	Feb 13, 2027	Pair with our Australia South trip



Discovering Our Planet Together

Dates & Pricing Summary:

Prices:
From \$14195
(+Air)

Group Size:
Limited to 11
Travelers

Physical Requirements:
Moderate

Departure	Return	Notes
Feb 11, 2027	Feb 22, 2027	Pair with our Australia South or Ultimate Australia trip
Feb 14, 2027	Feb 25, 2027	Pair with our Australia South or Ultimate Australia trip
Mar 1, 2027	Mar 12, 2027	Pair with our Australia South or Ultimate Australia trip
Mar 12, 2027	Mar 23, 2027	Pair with our Ultimate Australia trip
Mar 19, 2027	Mar 30, 2027	Pair with our Australia South or Ultimate Australia trip
Oct 2, 2027	Oct 13, 2027	Pair with our Australia South trip
Oct 8, 2027	Oct 19, 2027	Pair with our Australia South trip
Oct 14, 2027	Oct 25, 2027	Pair with our Australia South trip
Oct 20, 2027	Oct 31, 2027	Pair with our Australia South or Ultimate Australia trip
Oct 27, 2027	Nov 7, 2027	Pair with our Australia South trip
Nov 3, 2027	Nov 14, 2027	Pair with our Australia South or Ultimate Australia trip
Nov 9, 2027	Nov 20, 2027	
Nov 15, 2027	Nov 26, 2027	Pair with our Australia South or Ultimate Australia trip
Nov 22, 2027	Dec 3, 2027	
Dec 2, 2027	Dec 13, 2027	Pair with our Ultimate Australia trip

2028 Departures

Departure	Return	Notes
Jan 15, 2028	Jan 26, 2028	Pair with our Australia South trip
Jan 19, 2028	Jan 30, 2028	
Jan 23, 2028	Feb 3, 2028	Pair with our Australia South trip
Jan 27, 2028	Feb 7, 2028	Pair with our Australia South trip
Feb 1, 2028	Feb 12, 2028	Pair with our Australia South trip
Feb 10, 2028	Feb 21, 2028	Pair with our Australia South or Ultimate Australia trip
Feb 13, 2028	Feb 24, 2028	Pair with our Australia South or Ultimate Australia trip



Discovering Our Planet Together

Departure	Return	Notes
Feb 29, 2028	Mar 11, 2028	Pair with our Australia South or Ultimate Australia trip
Mar 11, 2028	Mar 22, 2028	Pair with our Ultimate Australia trip
Mar 18, 2028	Mar 29, 2028	Pair with our Australia South or Ultimate Australia trip
Oct 1, 2028	Oct 12, 2028	Pair with our Australia South trip
Oct 7, 2028	Oct 18, 2028	Pair with our Australia South trip
Oct 13, 2028	Oct 24, 2028	Pair with our Australia South trip
Oct 19, 2028	Oct 30, 2028	Pair with our Australia South or Ultimate Australia trip
Oct 26, 2028	Nov 6, 2028	Pair with our Australia South trip
Nov 2, 2028	Nov 13, 2028	Pair with our Australia South or Ultimate Australia trip
Nov 8, 2028	Nov 19, 2028	
Nov 14, 2028	Nov 25, 2028	Pair with our Australia South or Ultimate Australia trip
Nov 21, 2028	Dec 2, 2028	
Dec 1, 2028	Dec 12, 2028	Pair with our Ultimate Australia trip



Discovering Our Planet Together

Pricing

2025 Prices

➤ Trip Price

\$13695 - \$13995 (+internal air)

Internal Air: \$996 (this will be listed separately on our invoicing)

Single Occupancy: \$1995. **Click here** to learn how you can avoid the single supplement.

Deposit: \$500 per person (nonrefundable)

Trip prices are per person based on double occupancy and are given in U.S. dollars.

Please read our Payment & Refund Policy here.



2026 Prices

Mouse over or tap dates above to view prices for specific departure dates.

➤ Trip Price

\$14995 (+internal air)

Internal Air: \$996 (this will be listed separately on our invoicing)

Single Occupancy: \$1995. **Click here** to learn how you can avoid the single supplement.

Deposit: \$500 per person (nonrefundable)

Trip prices are per person based on double occupancy and are given in U.S. dollars. **Please read our Payment & Refund Policy here.**

Included

➤ **Trip price includes:** Accommodations, services of Nat Hab's professional Expedition Leader(s), local guides and lodge staff, all meals from dinner on Day 1 through breakfast on final day, private boat tour in Milford Sound, private boat tour to Mou Waho Island, all kayaking equipment, some gratuities, airport transfers for those arriving by air on Day 1 and final day, all activities and entrance fees, all taxes, permits and service fees.

➤ **Internal air fee includes:** Flights from Invercargill to Stewart Island and back to Invercargill, and private chartered scenic helicopter flight from Milford Sound to Queenstown, including scenic glacier and alpine lake landings, plus any additional taxes and fees on these flights (this will be listed separately on our invoicing).

Not Included

Travel to and from the start and end point of your trip, some alcoholic beverages, some gratuities, passport and visa fees (if any), optional activities, items of a personal nature (phone calls, laundry and internet, etc.), airline baggage fees, airport and departure taxes (if any), required medical evacuation insurance, optional travel protection insurance.



Physical Requirements

Moderate

This itinerary includes several walks of approximately two to three miles over several hours each in varying conditions and environments that can include steep, uneven and/or slippery terrain. Travelers must be able to walk a minimum of two miles at a time in order to participate on this trip. Many days involve long drives on winding roads over mountain passes; the highest altitude we reach is 3,000 feet. We spend a moderate time on boats, where conditions may be rough. Guests prone to motion sickness may wish to take precautions. Guests are required to embark and disembark from water taxis and small planes unassisted which will involve steps. There are a variety of night walks offered throughout the itinerary. The group will be led at times by a dim light carried by the guide. Depending on how much time it takes to locate the elusive Kiwi birds, it is possible that we will be walking in the dark for several hours. Travelers may have the opportunity to participate in optional kayaking, weather permitting. Though no prior kayaking experience is required, general fitness and mobility, including the ability to get into and out of a kayak, are essential. Those travelers who would like to take longer or more strenuous hikes may have opportunities to do so. While travelers are not required to participate in all activities, should you opt out of the day's scheduled activities, we cannot always guarantee that alternatives will be available.

On custom or private departures with smaller groups, our ability to accommodate varying levels of physical abilities or interests is limited, since these trips are staffed with a single Expedition Leader who may be assisted, pending availability, by local guides.



Important Information About This Trip

The South Island of New Zealand is vast, and we attempt to take in as much of this beautiful land as possible without rushing, from mountain passes to ocean fjords. Our comprehensive exploration covers more than 900 miles, and the trip involves a fair amount of driving. There are three days with more than three hours of driving and several other days where we will be in the vehicle for two to three hours. These are scenic drives that we break up with activities and short stops. They're always worth the windshield time, allowing us to visit iconic nature destinations like Steward Island, Milford Sound, Lake Wanaka and the beautiful Wilderness Lodges at Lake Moeraki and Arthur's Pass. Our Expedition Leader knows the land and its flora and fauna intimately as well as its less-visited sites.

New Zealand's climate is quite complex and varied. Travelers should expect a cool, temperate climate on the South Island, with alpine conditions in the mountainous areas. Mountain chains extending the length of New Zealand provide a barrier for the prevailing westerly winds, dividing the country into dramatically different climate regions. The west coast of the South Island is the wettest area of New Zealand; thus, when traveling in this region, you should be prepared to encounter some rain. The areas just to the east of the mountains are the driest. Keep in mind you should be prepared for chilly wet weather.

Most of New Zealand experiences between 23 and 63 inches of rainfall spread throughout the year, with a drier period during the summer. Parts of the west coast can get 300 inches a year! The temperatures during your adventure will range from 45°F to 90°F.

There are varying benefits based on seasonality traveling to New Zealand from their spring to fall. During our trips the following seasonality can generally be can be expected:

October and November: spring transitioning to summer

December and January: summer

March: summer transitioning to fall

Sunshine hours are relatively high in areas that are sheltered from the west, and most of New Zealand experiences at least 2,000 hours annually. The midday summer solar radiation index (UVI) is often very high in most places and can be extreme in northern New Zealand and in mountainous areas. Autumn and spring UVI values can also be high in most areas.

Mandatory Insurance

Since the areas we travel to are remote and wild (that's why we go there!), we require that all guests have, at minimum, medical evacuation insurance for this program. This is for the safety of all guests. We require that your chosen independent insurance plan includes at least \$250,000 in medical evacuation coverage.

To protect your investment and to provide peace of mind while you travel, we also strongly recommend purchasing comprehensive travel insurance. Plans may cover everything from medical treatment to trip cancellations and delays and lost luggage. Please contact our office if you would like more information about the medical evacuation and comprehensive travel insurance policies we offer by calling 800-543-8917.



Discovering Our Planet Together

Getting There & Getting Home

Please arrive in Dunedin by 12 pm on Day 1 in order to join your group for an orientation meeting at 2 pm, followed by a tour of the Otago Peninsula to view royal albatross and yellow-eyed penguins. For those that are traveling on the North Island pre-trip extension, you have an included pre-trip night in Dunedin and will be joined with the group for the start of the tour.

We can serve you best if Natural Habitat Adventures' Travel Desk makes these reservations for you, as they are intimately familiar with the special requirements of this program and can arrange the most efficient and cost effective travel for you. Please call us at 800-543-8917. Note that while we offer you the best possible rates available to us on airfare and additional nights' accommodations, you may find special web rates or better fares online.



Discovering Our Planet Together



Extension Details:

New Zealand North Island Extension
\$3695

New Zealand North Island Extension
\$3695

Ultimate Australia Safari
\$28195

Australia South: Tasmania, Kangaroo Island & the Great Ocean Road
\$16495

New Zealand Nature Explorer Extensions

A Small-Group Immersion in the Scenic Splendors of New Zealand's South Island



New Zealand North Island Extension

The ideal complement to your South Island adventure, this sampler of North Island highlights includes Rotorua and the Coromandel Peninsula—explore mist-clad mountains, pristine beaches, waterfalls, geysers, mineral springs and Maori culture.
\$3695 (+air)



New Zealand North Island Extension

The ideal complement to your South Island adventure, this sampler of North Island highlights includes Rotorua and the Coromandel Peninsula—explore mist-clad mountains, pristine beaches, waterfalls, geysers, mineral springs and Maori culture.
\$3695 (+air)

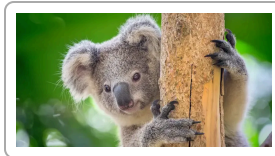


Ultimate Australia Safari

A three-week nature extravaganza from Australia's tropical top to Tasmania down south, including the Great Barrier Reef and Outback. Eight national parks, seven private reserves and four World Heritage Sites!
\$28195 (+air)



Discovering Our Planet Together



Australia South: Tasmania, Kangaroo Island & the Great Ocean Road

Discover the diverse landscapes and ecology of far-south Australia as we explore four national parks and a host of private nature reserves teeming with endemic and endangered wildlife.

\$16495 (+air)



Natural Habitat & WWF: Discovering Our Planet Together

Natural Habitat Adventures • PO Box 3065 • Boulder, CO USA 80307

USA & Canada: 800-543-8917 • International: 303-449-3711

© 2025 Natural Habitat Adventures

WWF's membership travel program is operated by Natural Habitat Adventures (Nat Hab). To date, Nat Hab has provided more than \$6 million in support of WWF's mission and will continue to give 1% of gross sales plus \$175,000 annually through 2028. WWF® and ©1986 Panda Symbol are owned by WWF. All rights reserved.