



Discovering Our Planet Together



Land of the Snow Leopard

Explore the Indian Himalaya's Alpine Heights on a Search for One of Earth's Rarest Cats



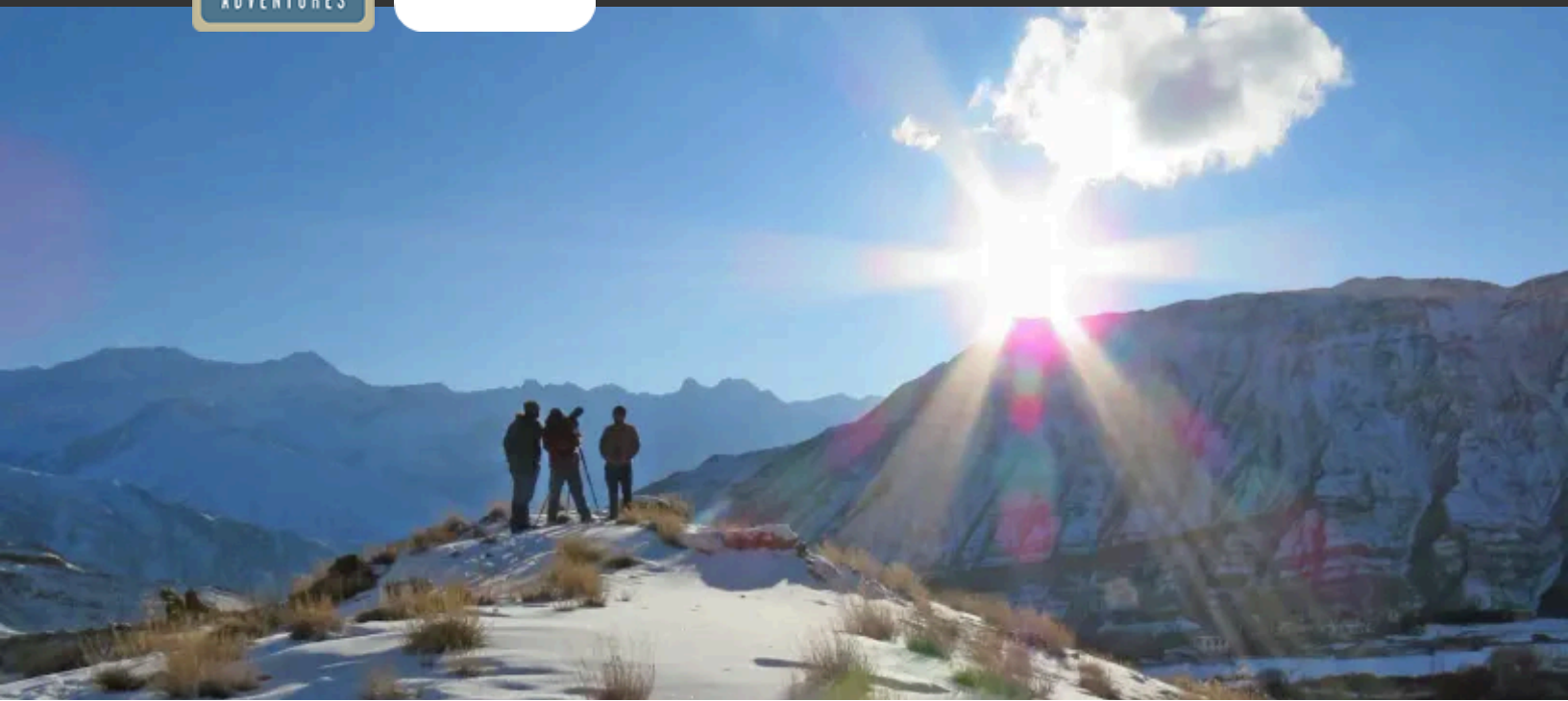
Discovering Our Planet Together

Table of Contents:

Trip Overview	3
Trip Itinerary	4
Trip Accommodations	8
What Makes Nat Hab Different?	10
Make It Private	12
Dates & Pricing Information	13
Trip Extensions	19



Discovering Our Planet Together



Trip Details:

Days

10 Days / Dec–
Apr

Price

From \$10995
(+Air)

Physical Requirements

Difficult

Land of the Snow Leopard

Explore the Indian Himalaya's Alpine Heights on a Search for One of Earth's Rarest Cats

The Himalayas have long held allure for adventurers, and in the world's highest mountains, no creature is more captivating than the snow leopard. This elegant feline, with its rosette-spotted silver coat, patrols lofty ridges in Earth's most forbidding altitudes. Agile and solitary, built for hunting bharal and ibex, it uses its long, thick tail for balance and warding off winter's cold bite, traversing snowfields on broad paws that serve as snowshoes and pad rocky landings after a 50-foot pounce onto unwitting prey. From our luxurious base—a strategically located luxury ecolodge with thick walls, insulated windows, radiant floor heating and abundant hot running water—search for these mysterious cats in the heights of Ladakh. In this former Silk Road kingdom in northern India, a vibrant Tibetan Buddhist culture thrives. Icy peaks tower above whitewashed monasteries and vibrant prayer flags flutter atop mountain passes. Here, our wilderness quest in search of the elusive snow leopard awaits.

Trip Highlights

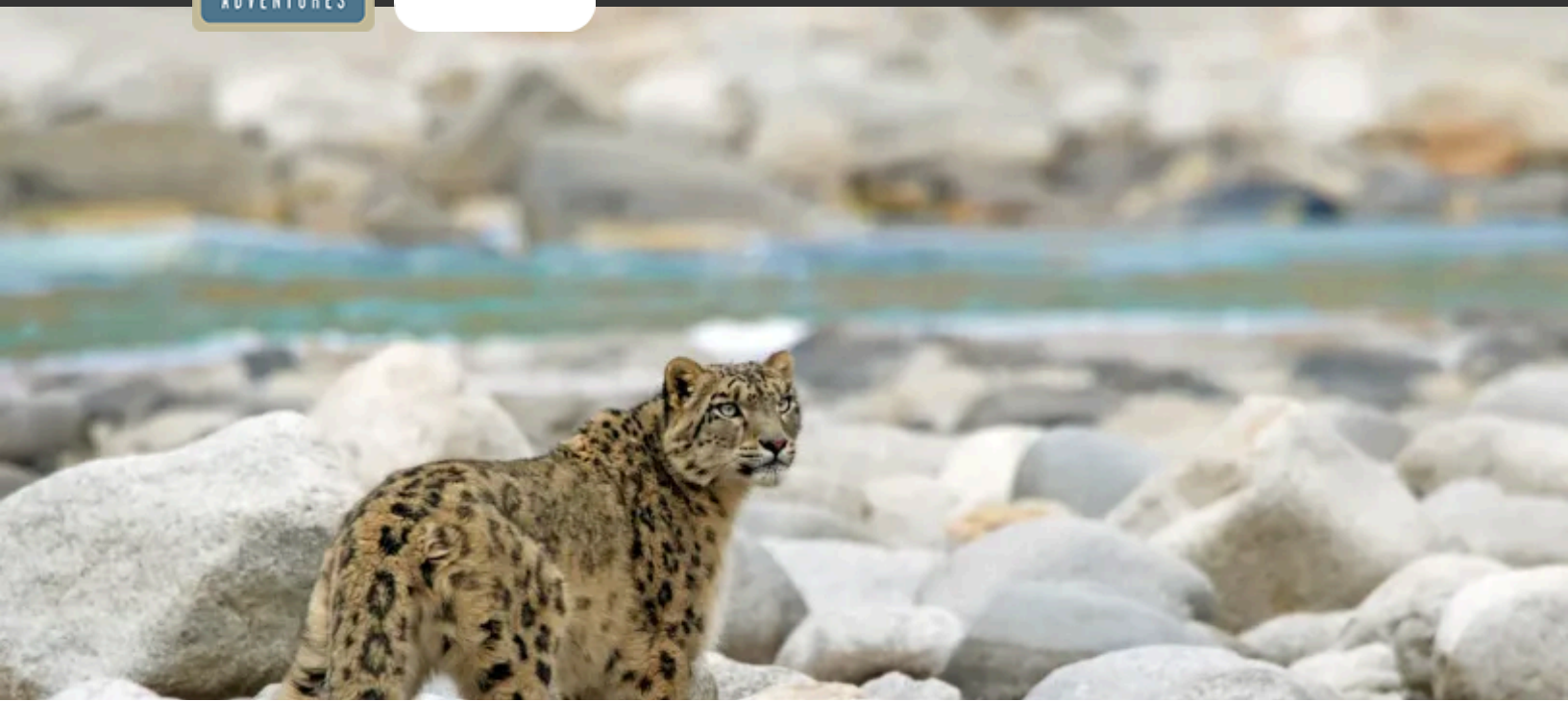
With our naturalist Expedition Leader and top local trackers, search for snow leopards and other Himalayan wildlife including bharal, urial, ibex and wolves

Explore the Himalayan landscape of Ladakh, steeped in Tibetan Buddhist culture, as we visit villages, monasteries and passes adorned with prayer flags

Our deluxe, newly built mountain lodge features en suite heated showers, radiant floor heating and floor-to-ceiling windows throughout—and it's ours alone



Discovering Our Planet Together



Itinerary At A Glance

Day 1

Delhi, India / Gurgaon

Day 2

Delhi / Leh, Ladakh

Day 3

Leh—Exploring the Indian Himalaya

Days 4 - 8

Rumbak—Snow Leopard Tracking from Our Private Expedition Lodge

Day 9

Rumbak / Leh

Day 10

Leh / Delhi / Depart

Land of the Snow Leopard Itinerary

Explore the Indian Himalaya's Alpine Heights on a Search for One of Earth's Rarest Cats

Day 1: Delhi, India / Gurgaon

Arrive at the international airport in India's capital of Delhi and transfer to our luxury hotel in the high-tech suburb of Gurgaon outside the city center. This elegant contemporary low-rise hotel is surrounded by seven acres of gardens, courtyards and reflecting pools, lending a resort-like ambience. This evening, join our Expedition Leader for a welcome dinner and preview of our journey into the Indian Himalaya and the realm of *Panthera uncia*, the snow leopard.





Day 2: Delhi / Leh, Ladakh

Early this morning, we fly north to the former Himalayan kingdom of Ladakh. This is one of India's least-populated regions, known for dramatic peaks, monasteries filled with golden Buddhas, and the elusive snow leopards that prowl the snowfields of an otherwise rocky, arid mountainscape. Once we touch down at 11,500 feet in the capital city of Leh, our high-altitude acclimatization begins. For centuries, Leh was a crossroads for Indus Valley trade between Tibet, Kashmir, India and China—routes that carried salt, cashmere wool, indigo and silk. The local people are ethnic Tibetans who speak Ladakhi, and Buddhism and Islam have co-existed peacefully here since the 8th century. Our lodging in the heart of this ancient city sits in the shadow of an unoccupied 17th-century palace designed to evoke the Dalai Lama's former residence in Lhasa—the famous Potala Palace. The rest of the day is at leisure as we settle in and adjust to the high elevation.

Day 3: Leh—Exploring the Indian Himalaya

Today we travel into Leh's rural surroundings, exploring the rugged Indus River Valley. It's easy to see why this enclave at the northern tip of India is often called "Little Tibet," as we cross passes marked with colorful prayer flags beneath towering Himalayan peaks. We stop in Gya, the oldest village in Ladakh, perched on a gorge overlooking the river. A contingent of villagers greets us with a traditional welcome before leading us on a guided tour of their town. We learn about animal husbandry, handicrafts and textiles, along with traditional barley roasting and cooking. Archery is an important element of traditional Ladakhi life, and we stop at a range where we can witness archers in their element—and to try our own hand with a bow and arrow! After a traditional lunch in a local home, set out on foot with our guide to explore the landscape, where the likelihood is high of seeing blue sheep and birdlife. Return to Leh by late afternoon, with time to rest for a bit as we continue to acclimate.



Days 4 - 8: Rumbak—Snow Leopard Tracking from Our Private Expedition Lodge

Following the Indus River westward, we venture deep into the snow leopard's realm. The Rumbak region is the gateway to an expansive landscape ruled by the “gray ghost of the mountains”—a name bequeathed upon the snow leopard for its solitary and elusive nature. As we drive the scenic road toward our snow leopard expedition base, be on the lookout for ibex, noted for their magnificent horns, standing vigil over rocky outcrops and couloirs.

Our private lodge was recently constructed using traditional Ladakhi techniques and materials, including stone, mud and timber, all chosen for their natural insulating properties. The most luxurious lodge in the region, it features radiant floor heating, abundant running hot water and double-glazed windows for an intimate and warm experience.

Over the next five days, we search the alpine heights in and around Hemis National Park, which holds the highest density of snow leopards in any protected area in the world—about 200. These trans-Himalayan cats have evolved to thrive in some of Earth's harshest alpine terrain, mostly above tree line and up to 18,000 feet in elevation. Our base for exploration is a private ecolodge set on a plateau with unimpeded views of the snowcapped mountains and Rumbak River below. The nearby village of Rumbak, population 250, is a short walk away. The surrounding landscape provides habitat for three large ungulates—ibex, bharal (blue sheep) and urial (mountain sheep)—along with fox, hare, pika and packs of Tibetan wolves.

For our best chance to see snow leopards, we rely on the expertise and keen eyes of a team of local spotters, plus our naturalist Expedition Leader. These seasoned trackers scour the landscape early each morning to help us plan our route for the day and increase our luck of seeing these cats whose camouflage enables them to blend in seamlessly with their habitat. We also retain radio contact with trackers throughout the day, so we know when snow leopards wander into our area. Private vehicles maximize our flexibility to move to where the snow leopards are. Typically, we spot them on high ridges around our lodge or within a short walk from the vehicles, but longer hikes are available for those who desire.

In between excursions, the lodge offers a cozy respite for warming up with hot chai. Nearby are intriguing Ladakhi cultural sites like Buddhist temples and monasteries that we visit if time allows.

Day 9: Rumbak / Leh

After breakfast, enjoy a final morning in Rumbak, relishing our last chance to soak in the wild peace of this alpine domain. Later, say farewell to our gracious Ladakhi hosts whose lodge is helping to enhance protection for snow leopards in the area. These majestic cats face threats from habitat loss due to climate change, reduced prey, poaching and human conflict, and we leave knowing that our presence here makes a difference for their future, with the value of our economic contribution and our advocacy. Back in Leh, we attend a private culinary immersion at a local Ladakhi kitchen. Later this evening, share reflections over a farewell dinner.



Discovering Our Planet Together

Day 10: Leh / Delhi / Depart

Fly from Leh to Delhi this morning and continue to our hotel where an overnight room is reserved. A delicious lunch awaits at the hotel, followed by time to relax among landscaped gardens and pools. A transfer to the international airport is included to meet departing flights this evening.



Discovering Our Planet Together



Accommodation Details:

Trident Gurgaon

House of Rumbak Wildlife Lodge

The Grand Dragon Ladakh

JW Marriott Hotel New Delhi Aerocity

For detailed descriptions, visit nathab.com/asia-adventure-travel/india-snow-leopard-tour/accommodations

Land of the Snow Leopard Accommodations

Explore the Indian Himalaya's Alpine Heights on a Search for One of Earth's Rarest Cats



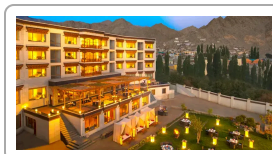
Trident Gurgaon

Set among landscaped gardens, courtyards, reflection pools and fountains, this contemporary oasis offers resort-style ambience in a serene setting away from the bustle of Delhi, just 30 minutes from the airport,.



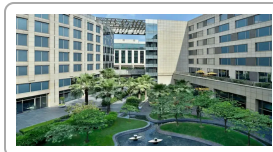
House of Rumbak Wildlife Lodge

Located at 12,800 feet above sea level and offering excellent proximity for snow leopard tracking, this new ecolodge provides a warm and cozy base exclusively for Nat Hab guests.



The Grand Dragon Ladakh

In the heart of ancient Leh, enjoy the luxuries of Ladakh's premier 5-star hotel, combining elements of traditional Ladakhi art and culture with state-of-the-art amenities and expansive views of snowcapped peaks.



JW Marriott Hotel New Delhi Aerocity

Conveniently located near New Delhi's international and domestic airports, this stylish, contemporary hotel offers a blend of luxury and convenience, with high-end amenities.



Discovering Our Planet Together



The Ultimate Quest to See Snow Leopards in the Wild

Northern India is one of the world's most captivating travel destinations. But getting to far-flung places like Ladakh in winter can be daunting. And if you want the best odds of seeing elusive snow leopards and other Himalayan wildlife, you must have access to superlative guides. This is an expedition of a lifetime that you need our expertise for!

1

An Intensive Focus on Snow Leopards

Based at our private lodge in snow leopard territory, we spend five days with the finest trackers and naturalist guides. Spotters attempt to locate the snow leopards each morning and stay in constant radio contact regarding their movement. Private vehicles allow maximum flexibility to seek out snow leopards and other wildlife such as Tibetan wolves, urial, blue sheep, ibex and lammergeiers.

2

A Small Group is Essential for a Fruitful Search

With no more than 10 travelers, our small group has a quiet presence, upping our chances of encountering snow leopards and other wildlife. And since we have the additional support of local guides from the lodge, there will be opportunities for longer hikes for those who prefer a more active adventure.

3

Our Private Expedition Lodge is an Optimal Base

Our stunning and environmentally conscious ecolodge—for our exclusive use—provides unparalleled comfort with en suite bathrooms, running hot water, radiant floor heating and gourmet meals. Built in the region's traditional architectural style, the lodge's fine details plus proximity to snow leopards and other Himalayan wildlife are the ultimate in luxury.

4

India's Finest Naturalist Guides

Our India Expedition Leaders average more than 15 years' experience—with top-level training including resources from WWF scientists. You won't find more knowledgeable, personable or enthusiastic guides than those who are proud to work for us. Our philosophy is simple: a nature adventure is only as good as the guide who leads it, so we provide the very best! **See Expedition Leader bios** with traveler comments regarding the quality of our leaders.



Discovering Our Planet Together

5

Local Guides & Expert Trackers Improve Odds for Sightings

We maximize chances of seeing snow leopards by relying upon local guides who are deeply familiar with this terrain and the cats' behavior. Our spotters search the landscape for signs of snow leopards early each morning, and we plan our days with the utmost flexibility so we can follow their paths accordingly. Sightings often happen on high ridges surrounding our lodge, or within a short walk from our vehicles.

6

Encounter Ladakh's Tibetan Buddhist Culture

While Ladakh is part of India, it truly stands apart. Ladakhis gained status as a separate union territory in 2019, and this Himalayan state is often referred to as "Little Tibet." Ethnic Tibetans have been largely left alone in this remote mountain environment, where their cultural and spiritual traditions thrive. Their long and vibrant Buddhist history is on display in roadside prayer flags and ancient monasteries where monks reside and practice. Absorb Ladakh's cultural sites in a quiet, non-touristy way, including our stay among yak-herding locals in the small Himalayan village of Mangyu.

7

Our Presence Directly Helps Protect Snow Leopards

Snow leopards are a vulnerable species under threat from habitat loss, retaliatory killings, poaching and climate change. Their range continues to decline from human settlement, while a warming climate is on target to diminish up to 30% of their traditional terrain. Responsible nature tourism is part of the solution. As conservation travelers, the investment we make to view Ladakh's snow leopards benefits local communities. Our being there creates an incentive to protect wild creatures they share the land with. In addition, we will make a donation to the Snow Leopard Conservancy India Trust for each traveler on this journey.

8

Our Quality-Value Guarantee Insures Your India Snow Leopard Expedition

With Natural Habitat Adventures, you receive our exclusive quality value guarantee that promises we will meet the high expectations we set forth in our promotional materials. To our knowledge, this is the most ambitious guarantee made by any adventure travel company.

9

Feel Good About Your Carbon-Neutral Journey

We care deeply about our planet, as we know you do. When you travel with us, the carbon emissions from your trip are 100% offset—including your round-trip flights from home. Natural Habitat Adventures has been the world's first carbon-neutral travel company since 2007.



Make It Private with Your Family or Friends

Travel privately, exclusively with your immediate family, multi-generational family or group of friends. And when you choose a private departure, you're assured the most exclusive and authentic Land of the Snow Leopard adventure on offer. Request your private departure by completing the form below.

Please note that on Land of the Snow Leopard Make It Private departures we require a minimum group size of 5 travelers.

Also, please be aware that your per-person cost on a Make It Private trip will vary depending on the number of travelers in your group and may be as much as 10%-30% higher (ship-based trips may be even higher) than our normal trip cost unless you fill the trip.

This **Make It Private** option is available on nearly every Nat Hab trip for family and friend groups. Call an Adventure Specialist at 800-543-8917 or look for the "Make It Private" icon in the **pricing section** of a trip online at nathab.com to see prices based on your specific group size.



Discovering Our Planet Together



Dates & Pricing Summary:

Prices:

From \$10995
(+Air)

Group Size:

Limited to 10
Travelers

Physical

Requirements:
Difficult

Land of the Snow Leopard Dates, Pricing & Info

Explore the Indian Himalaya's Alpine Heights on a Search for One of Earth's Rarest Cats

2025 Departures

Departure	Return	Notes
Dec 8, 2025	Dec 17, 2025	Habitat Club Pricing Available Pair with our Grand India or Nepal & Bhutan trip*

2026 Departures

Departure	Return	Notes
Jan 29, 2026	Feb 7, 2026	Pair with our Grand India trip or Nepal & Bhutan Photo Expedition*
Feb 4, 2026	Feb 13, 2026	Pair with our Grand India trip or Nepal & Bhutan Photo Expedition*
Feb 14, 2026	Feb 23, 2026	Habitat Club Pricing Available Pair with our Grand India trip*
Feb 26, 2026	Mar 7, 2026	Pair with our Grand India or Nepal & Bhutan trip*
Mar 5, 2026	Mar 14, 2026	Pair with our Grand India trip or Nepal & Bhutan Photo Expedition*
Mar 10, 2026	Mar 19, 2026	Pair with our Grand India, Tiger Quest or Nepal & Bhutan trip*
Apr 11, 2026	Apr 20, 2026	Pair with our Grand India, Tiger Quest or Nepal & Bhutan trip*



Discovering Our Planet Together

Dates & Pricing Summary:

Prices:

From \$10995
(+Air)

Group Size:

Limited to 10
Travelers

Physical**Requirements:**

Difficult

Departure	Return	Notes
Apr 16, 2026	Apr 25, 2026	Pair with our Grand India, Tiger Quest trip or India Tiger Photo Expedition*
Apr 21, 2026	Apr 30, 2026	Pair with our Grand India or Tiger Quest trip*
Apr 26, 2026	May 5, 2026	Pair with our Grand India, Tiger Quest or Nepal & Bhutan trip*

2027 Departures

Departure	Return	Notes
Jan 30, 2027	Feb 8, 2027	
Feb 5, 2027	Feb 14, 2027	
Feb 15, 2027	Feb 24, 2027	
Mar 6, 2027	Mar 15, 2027	
Mar 11, 2027	Mar 20, 2027	
Apr 12, 2027	Apr 21, 2027	
Apr 17, 2027	Apr 26, 2027	
Apr 22, 2027	May 1, 2027	
Apr 27, 2027	May 6, 2027	
Dec 12, 2027	Dec 21, 2027	



Discovering Our Planet Together

Pricing

2025 Prices

➤ Trip Price

\$10995 to \$11295 (+internal air)



Internal Air Cost: \$547 per person (this will be listed separately on our invoicing)

Single Occupancy: For a single room add \$3195. **Click here** to learn how you can avoid the single supplement.

Deposit: \$500 per person (nonrefundable)

Trip prices are per person based on double occupancy and are given in U.S. dollars.

Please read our Payment & Refund Policy here.

2026 Prices

Mouse over or tap dates above to view prices for specific departure dates.

➤ Trip Price

\$10995 to \$11395 (+internal air)

Internal Air Cost: \$581 per person (this will be listed separately on our invoicing)

Single Occupancy: For a single room add \$2995. **Click here** to learn how you can avoid the single supplement.

Deposit: \$500 per person (nonrefundable)

Make It Private: **View pricing** to take this trip privately with just you and your select travel companions.

Trip prices are per person based on double occupancy and are given in U.S. dollars. **Please read our Payment & Refund Policy here.**

2027 Prices

We're still in the process of confirming 2027 pricing. Please contact an Adventure Specialist for more details: 800-543-8917.

Included

➤ **Trip price includes:** Accommodations, services of Nat Hab's professional Expedition Leader(s), local guides, spotters and lodge staff, all meals from dinner on Day 1 through lunch on final day, local wine and beer at dinner while at the Snow Leopard Lodge, some gratuities, airport transfers on Day 1 and final day, donation fees to the Snow Leopard Conservancy, all activities and entrance fees, all taxes, permits and service fees.

➤ **Internal air cost includes:** All flights within the itinerary, additional luggage allowance (this will be listed separately on our invoicing).



Not Included

Travel to and from the start and end point of your trip, alcoholic beverages (other than those listed above), some gratuities, passport and visa fees, optional activities, items of a personal nature (phone calls, laundry and internet, etc.), airline excess baggage fees, required medical evacuation insurance, optional travel protection insurance.

Physical Requirements

Difficult

This is a remote and rugged nature adventure with wildlife viewing as the primary objective. Good health and general physical fitness and mobility are essential for participation in this trip. Our schedule is flexible to accommodate the movement of snow leopards and other wildlife. Sometimes we may spot wildlife directly on the mountain ridges surrounding our lodge, while other times we may need to drive 30 minutes or more to nearby valleys.

When our trackers spot wildlife, we often need to walk short distances from our lodge or vehicles to get the best views. In cold temperatures and at altitudes of 12,000 to 14,000 feet, hiking can feel strenuous, even though it will not be overly taxing in terms of distance and elevation gain. Although our walks are generally shorter in nature, as a guideline, travelers must be capable of hiking a minimum of 2 miles daily (in total, with stops) at a relaxed pace on narrow, rocky trails that may be covered with snow and ice. We may also walk off-trail at times, which requires extra agility and stability. Our staff is available to assist for safety purposes, but travelers must be able to comfortably negotiate uneven and unstable conditions, at extremely high altitudes, on their own. Longer or more strenuous optional hikes may be offered, too, to access additional areas of exceptional scenic beauty.

Our days start early. On the days we track snow leopards, expect to be outdoors for 2 or more hours at a time in cold winter weather, though wearing proper boots and clothing will ensure your comfort. Weather can be variable, and travelers should be prepared for the possibility of high winds, intense sun and very cold temperatures. Heavy snowfall is not uncommon. During the winter months, the average daytime temperatures in this part of the Himalaya can range from the low teens to 30 F. Evenings and early mornings can be extremely cold, with temperatures dropping below zero and wind chill that may make it feel even colder. Temperatures progressively warm up in March and April.

Ladakh is a high-altitude desert. The capital, Leh, sits above 11,000 feet. Our lodge in the Rumbak Valley sits at 12,800 feet and activities take place between 12,000 and 14,000 feet. At these elevations, it is possible that some individuals may experience altitude sickness. We recommend consulting your doctor about bringing altitude-sickness medication with you, since it is impossible to predict who may be affected. Travelers with a history of medical problems—particularly cardiac or respiratory ailments—should consult a doctor before deciding to participate in this expedition.

The drive to our expedition-style lodge takes approximately 1 hour from Leh, depending upon local conditions, and involves travel on very narrow, winding mountain roads with steep drop-offs. Although oxygen is provided at the lodge if required, Leh offers the closest comprehensive medical care. Flight transfers require walking with luggage through airports and climbing stairs to board and disembark planes.

On custom or private departures with smaller groups, our ability to accommodate varying levels of physical abilities or interests is limited, since these trips are staffed with a single Expedition Leader who may be assisted, pending availability, by local guides.



Important Information About This Trip

Our snow leopard journey is a conservation-focused wildlife expedition for intrepid travelers with a desire for deeper discovery, and an awareness that staying in proximity to wilderness and wildlife is the ultimate luxury. To search for snow leopards we'll spend five nights in the best area at the best time of year for potential sightings, but there are no guarantees we will see this elusive animal. Many sightings are in the distance, on mountain ridges and seen through scopes—thrilling nonetheless! This is the Himalayan winter, and weather and high-altitude conditions can sometimes be hostile. Essential requirements for travel in Ladakh include flexibility, a sense of humor, a true spirit of adventure, and an openness to the unexpected.

Accommodations

Because of its location and the staff's commitment to our guests, our dedicated lodge in Rumbak offers the most comfortable and authentic way to view snow leopards in the wild. Accommodations there are modern and comfortable, with twin or queen-sized beds and warm bedding, 24-hour electricity, heated floors, and private en suite Western toilets and showers with hot running water. Because it is a Ladakhi-style lodge, you will reside in relatively close quarters with fellow travelers. Thus, a flexible and tolerant attitude toward other participants is paramount for the enjoyment of all. While considered rustic by our usual standards, all in all a stay at the Snow Leopard Lodge is one of the most inspiring and memorable hotel experiences in the world of adventure travel!

Wildlife Viewing in Ladakh

When viewing wildlife in Ladakh, guests will be stationary for long periods of time. After reaching the point of a snow leopard sighting and setting up, we may be seated and simply waiting for any wildlife movement for the majority of the morning or afternoon. Hot refreshments and seating will be provided by our lodge for all outings.

Additionally, the distance from which we typically view wildlife on this trip is extremely far—often miles across a valley on the opposite mountainside or on the top of a mountain ridge line. While it's possible sightings can be closer – and unforgettable when they are – typically, we will be viewing wildlife from far away. This is when proper camera equipment and spotter's scopes will help to bring that wildlife into focus, and we will make use of this equipment for all sightings.

Landscape serving as the backdrop can also present challenges when viewing wildlife in Ladakh. These animals are adapted to this mountainous environment and remarkably can blend into the intricate jagged rocks of a mountainside. While the expert eyes of our spotters are well accustomed to spotting wildlife in this setting, it can take patience to spot creatures against the mountains for most visitors.

Safety & Health

Your safety is of paramount importance to us. Toward that end, we provide highly competent guides and local staff with extensive experience in high-altitude terrain. Our Expedition Leaders are thoroughly trained in emergency wilderness first-aid techniques. Ultimately, our guides and local staff make decisions with everyone's comfort and safety in mind, while trying to maximize the adventure experience for each individual. Listening carefully to your Expedition Leader's instructions and directions is ultimately your responsibility, and your astute attention is always in your best interest and that of the group.

Oxygen is available at all times at our expedition lodge. A military hospital is 1 hour away in Leh. Anyone who experiences acute mountain sickness will immediately be taken down to a lower altitude for treatment at the hospital in Leh.

Meals

Meals are hearty and delicious, and they are specially planned and prepared for well in advance. Dietary requirements due to serious medical conditions or strict personal restrictions can be met with ample notice, but must be adhered to while on the adventure.



Communication

There is no Wi-Fi or cell reception at our expedition lodge. There are nearby areas where our guides can drive for cell service.

Mandatory Insurance

Since the areas we travel to are remote and wild (that's why we go there!), we require that all guests have, at minimum, medical evacuation insurance for this program. This is for the safety of all guests. We require that your chosen independent insurance plan includes at least \$250,000 in medical evacuation coverage.

To protect your investment and to provide peace of mind while you travel, we also strongly recommend purchasing comprehensive travel insurance. Plans may cover everything from medical treatment to trip cancellations and delays and lost luggage. Please contact our office if you would like more information about the medical evacuation and comprehensive travel insurance policies we offer by calling 800-543-8917.

Getting There & Getting Home

You should plan to arrive in Delhi by 2 pm on Day 1 in order to participate in an orientation and group welcome dinner beginning at approximately 5:30 pm. You are free to depart Delhi any time after 8 pm on the final day.

We can best serve you if our Natural Habitat Adventures Travel Desk makes your reservations, as we are intimately familiar with the special requirements of this program and can arrange the most efficient travel. Please call us at 800-543-8917. Note that while we offer you the best possible rates available to us on airfare and additional nights' accommodations, you may find special web rates or better fares online.



Discovering Our Planet Together



Extension Details:

Sri Lanka Wildlife & Cultural Treasures
\$11895

Wild & Ancient Himalaya: Nepal & Bhutan
\$13895

India Tiger Quest — Ranthambore 2025
\$9495

The Grand India Wildlife Adventure
\$12695

Land of the Snow Leopard Extensions

Explore the Indian Himalaya's Alpine Heights on a Search for One of Earth's Rarest Cats



Sri Lanka Wildlife & Cultural Treasures

In this biodiversity hotspot, virgin rain forests shelter monkeys, tropical birds and leopards while gigantic blue whales cruise offshore. Discover World Heritage wonders in a beguiling melange of nature and culture.

\$11895



Wild & Ancient Himalaya: Nepal & Bhutan

Explore mountain heights and jungle lowlands on this soulful journey through the cultural and wildlife treasures of two neighboring Himalayan nations—including rhino tracking in Chitwan National Park.

\$13895 (+air)



India Tiger Quest — Ranthambore 2025

Deep within the jungles of Rajasthan, Ranthambore National Park offers some of India's most famous tiger viewing—and we take you there at the very best time of year to find them.

\$9495



Discovering Our Planet Together



The Grand India Wildlife Adventure

Look for rare Bengal tigers, one-horned rhinos and other endangered animals as we discover India's wild side on an exploration of three premier national parks. You won't find a richer Indian nature safari!

\$12695 (+air)



Natural Habitat & WWF: Discovering Our Planet Together

Natural Habitat Adventures • PO Box 3065 • Boulder, CO USA 80307

USA & Canada: 800-543-8917 • International: 303-449-3711

© 2025 Natural Habitat Adventures

WWF's membership travel program is operated by Natural Habitat Adventures (Nat Hab). To date, Nat Hab has provided more than \$6 million in support of WWF's mission and will continue to give 1% of gross sales plus \$175,000 annually through 2028. WWF® and ©1986 Panda Symbol are owned by WWF. All rights reserved.