



Discovering Our Planet Together



East Greenland Arctic Adventure

Explore Arctic Wilderness from Our Luxury Expedition Camp in View of the Greenland Ice Sheet



Table of Contents:

Trip Overview	3
Trip Itinerary	4
Trip Accommodations	9
What Makes Nat Hab Different?	11
Make It Private	13
Dates & Pricing Information	14
Trip Extensions	20



Discovering Our Planet Together



Trip Details:

Days
10 Days / Jul-Aug

Price
From \$13795 (+Air)

Physical Requirements
Moderate - Remote

East Greenland Arctic Adventure

Explore Arctic Wilderness from Our Luxury Expedition Camp in View of the Greenland Ice Sheet

"All true wisdom is only to be found far from the dwellings of man, in great solitudes." — Knud Rasmussen, Danish-Inuit polar explorer

As technology shrinks our planet and its farthest reaches become more accessible, novel adventures are ever rarer. But that's what you'll find at Base Camp Greenland, our deluxe safari-style outpost near the edge of the Greenland ice sheet. In East Greenland, one of the most isolated places on Earth, we are immersed in raw Arctic beauty while staying in surprising comfort. Summer here is glorious! Miniature wildflowers dot the tundra, and by early autumn, lowbush blueberries and crowberries ripen as dwarf birch turns gold. Whales frequent the fjord, and seals bob among icebergs, spawned from massive glaciers, which glitter in the late sunset light. Beneath granite peaks that tower over deep inlets, we find stunning hiking and kayaking. Nothing compares to East Greenland for an epic Arctic expedition—and there's no better way to experience it than from our wilderness base camp!

Trip Highlights

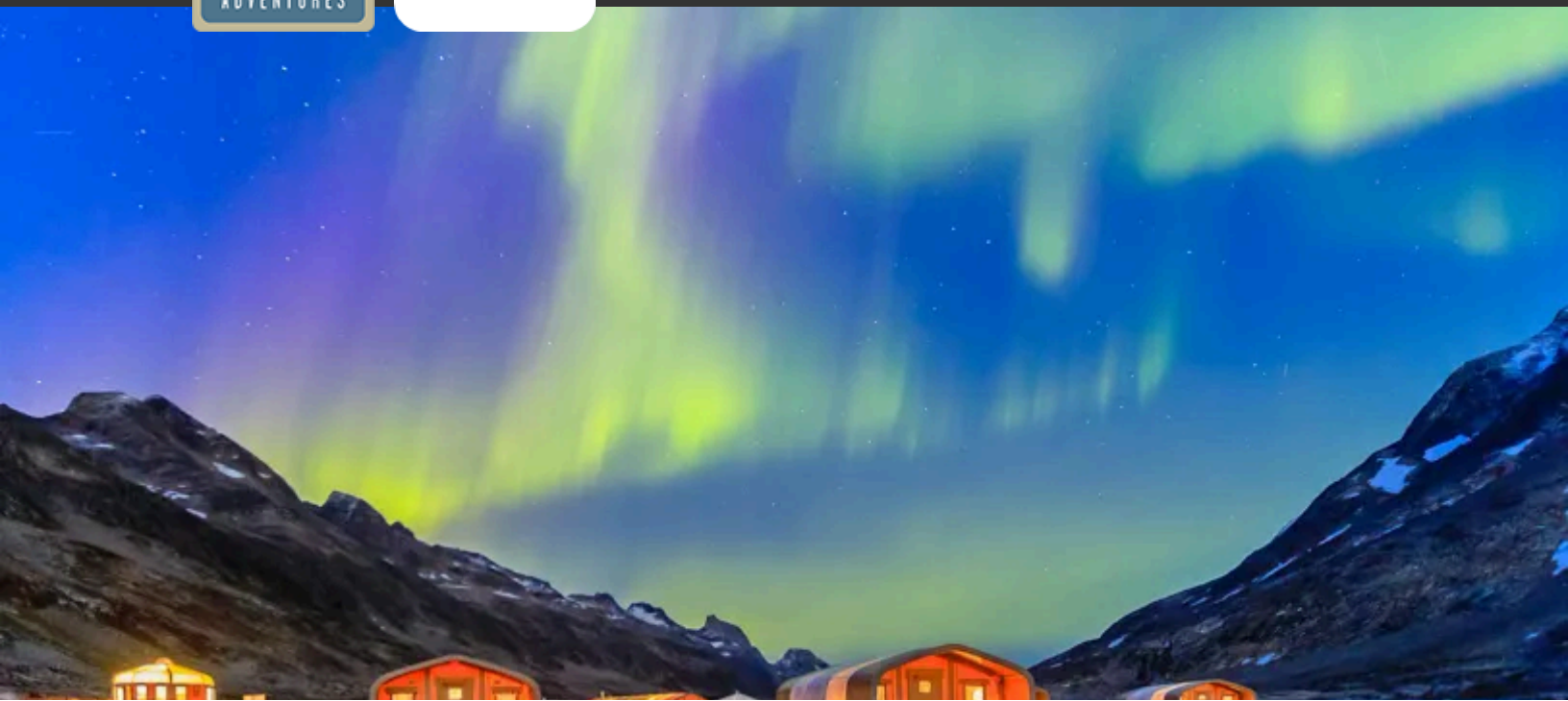
Most visitors go to Greenland's populated west side, but our focus is on the wild, virtually uninhabited and rarely visited east coast, where silence and solitude reign

Enjoy warmth, comfort and fresh meals at our private safari-style camp in view of the Greenland ice sheet, surrounded by monumental peaks

Explore fjords and islands by boat, helicopter, kayak and hikes; learn about climate change among melting glaciers; and meet local Inuit residents



Discovering Our Planet Together



Itinerary At A Glance

- Day 1**
Keflavik, Iceland / Reykjavik
- Day 2**
Lava Tunnel / Seltun Geothermal Area / Kulusuk, Greenland / Tasiilaq
- Day 3**
Tasiilaq—Valley of Flowers & Town Tour
- Day 4**
Tasiilaq / Journey to Nat Hab's Base Camp Greenland
- Days 5 - 7**
Base Camp Greenland—Exploring Sermilik Fjord by Zodiac, Foot & Kayak
- Day 8**
Base Camp Greenland / Helicopter or Boat to Kulusuk / Coastal Walk
- Day 9**
Private Glacier Walk / Kulusuk Town Tour & Drum Dancing / Keflavik

East Greenland Arctic Adventure Itinerary

Explore Arctic Wilderness from Our Luxury Expedition Camp in View of the Greenland Ice Sheet

Day 1: Keflavik, Iceland / Reykjavik

Arrive at Keflavik International Airport where you're met on arrival and transferred to our hotel in Reykjavik, the capital of Iceland, less than an hour's drive. If you arrive very early, you may store your bags at our conveniently located hotel while you explore this compact city on your own. This evening, gather for a welcome dinner and presentation with our Expedition Leaders.





Itinerary At A Glance

Day 10
Keflavik / Depart

Day 2: Lava Tunnel / Seltun Geothermal Area / Kulusuk, Greenland / Tasiilaq

Our adventure begins with an immersion in Iceland's dramatic volcanic and geothermal features. First, we have a private tour of the Raufarholshellir Lava Tunnel to witness the inner workings of an ancient volcanic eruption that happened 5,200 years ago. Inside the lava tube—one of the longest in Iceland at 4,500 feet—we learn the origins of the vibrant colors and intriguing rock formations. Then we head down the Reykjanes Peninsula to explore Seltun, one of Iceland's most important high-temperature geothermal areas. Lying on the fissure zone of the Mid-Atlantic Ridge separating the Eurasian and North American tectonic plates, this dynamic landscape is pocked with boiling mudpots and hissing fumaroles belching steam. As we follow the boardwalk through the animated landscape where mineral deposits have created colorful sediments, the pungent odor of sulphur hangs in the air. The Reykjanes Peninsula is one of Iceland's most active volcanic areas, with seven separate eruptions occurring in 2024 alone.

Continue to Keflavik, returning to Iceland's international airport where we board our late afternoon flight to Kulusuk, Greenland. As we approach, get a preview of the magnificent scenery to come, with icebergs drifting below and perhaps even a chance to spot a whale from the air. From Kulusuk, transfer by helicopter or boat to Ammassalik Island, landing in Tasiilaq, the small administrative center of East Greenland. Tasiilaq's collection of charming wooden houses painted in bright primary colors hugs King Oscar's Harbor, surrounded by pointed peaks iced with glaciers. The town of 2,000 is a hub for outdoor adventure, from hiking and kayaking in summer to dog sledding and glacier skiing in winter. Most of East Greenland is uninhabited, however, except for a handful of small subsistence hunting communities. Greenland's east coast is often called "the back side" by those on the west, where most of the population, its capital and institutions are located. East Greenland's people had no contact with the outside world until the beginning of the 20th century, and that isolation has fostered a distinct and resilient culture. Our introduction to Greenland begins here where Arctic wilderness and traditional lifestyles meet. Once we check in to our hotel, we gather for dinner, surveying the 180-degree view of the town below and mountains beyond.



Day 3: Tasiilaq—Valley of Flowers & Town Tour

Though interior Greenland is covered by a massive ice cap, a few habitable areas exist around the bays and coastal islands, and the region we visit enjoys a surprisingly mild and dry summer climate. Set out this morning with our Expedition Leader to explore the area around Tasiilaq on foot, hiking into the Valley of Flowers above the scenic bay that fronts the town. Bring your camera: the ice-clad gneiss and granite peaks provide a striking backdrop for waterfalls and small lakes fringed by northern wildflowers in season. We spend the afternoon in town learning about the region's history and contemporary daily life. The small Ammassalik Museum, a highlight, showcases Greenlandic Inuit culture and traditions. Its collection includes East Greenlandic masks, kayaks, sleds, tools, beadwork, old and new tupilak figures, and works by local artists. Later this afternoon, we also hear firsthand experiences from a local resident who shares personal perspectives on daily life and subsistence in this remote Arctic realm.

Day 4: Tasiilaq / Journey to Nat Hab's Base Camp Greenland

Depart by boat for Nat Hab's private wilderness Base Camp, located on the east side of Sermilik Fjord. Our destination is near the tiny village of Tinit, which we'll visit during our stay. This hilltop hamlet is one of the most picturesque outposts in East Greenland, overlooking a panorama of Sermilik Fjord littered with huge icebergs, with the Greenland ice sheet in view beyond. Behind the town, glacier-clad peaks rise over a mile high, jutting up like sharp black teeth through the ice. Tinit is home to fewer than a hundred hardy people who live a subsistence lifestyle, fishing and hunting amid the constantly shifting ice.

Keep an eye out for whales as we travel, as they are often seen in these waters when ice conditions permit. The area is filled with evidence of ancient habitation, including graves and ruins of old Inuit sod house foundations, and it is an evocative place to learn more about Inuit history and lore. Reaching Base Camp Greenland, we find ourselves in one of the most remote places on the planet. After settling in to our private tent cabins, sit down for coffee or tea in the yurt where we have an orientation to our environs, followed by a gear fitting to prepare for our Arctic adventures ahead. After lunch, our first exploratory venture is likely to include a paddle among the small icebergs and calm waters of our protected bay if weather permits. Then we'll gather for dinner and a lecture to acquaint us with the region's natural history. Through presentations and personal visits during our stay, we also learn about Greenland's cultural heritage and aspects of modern life. Traditional Inuit identity remains dominant in East Greenland, and we share an authentic encounter with this enduring ancient culture that still exists in close harmony with nature.



Days 5 - 7: Base Camp Greenland—Exploring Sermilik Fjord by Zodiac, Foot & Kayak

The landscape along Greenland's isolated and rarely visited east coast is dramatic. Great fjords indent the coastline, penetrating far into sheer-sided mountains capped by the world's second-largest ice sheet—and Sermilik Fjord is the mightiest of them all. The 60-mile-long "iceberg highway" is primarily fed by the highly active Helheim Glacier, the fastest-flowing tidewater glacier on Greenland's east coast. Our base camp provides a safe and comfortable outpost from which to explore this vast expanse of wild terrain just below the Arctic Circle. Beyond our location at the mouth of a glacial valley, the wider region is dotted with a few isolated villages where Greenlandic Inuit people have thrived for centuries in this uncompromising Arctic environment. In varied encounters, we learn about their culture and how they are retaining their traditions while adapting to contemporary life in the 21st century.

On Zodiac excursions, navigate among a flotilla of blue icebergs in an array of wild shapes, some as big as buildings. While marine life sightings are sporadic, we sometimes see seals and less frequently whales. The latter are found seasonally in these waters, and when ice conditions permit—if we are lucky, we might catch a glimpse of a fin, minke or humpback, all of which are occasionally present. Guided sea kayaking is also an option for an eye-level view on the frigid waters and bobbing ice. Ashore, we traverse the mountainsides and wander near glaciers that wind down from the Greenland ice sheet. This huge ice mass—second in size only to Antarctica—stretches more than 1,500 miles from north to south, is nearly 2 miles deep at its thickest point, and covers 80 percent of the island. Learn about the crucial role the ice sheet plays in regulating Earth's climate, and see with your own eyes how rapidly it is being affected by a warming climate.

Long hours of summer daylight allow for extensive exploration. Witness the effect of geological forces on naked bedrock, and walk atop patches of tundra. Amid fields of Arctic cotton grass and miniature berry bushes, look for Arctic fox and birdlife including ptarmigan, northern wheatear, and possibly gyrfalcon. Each evening, we retreat to Base Camp for creative meals freshly prepared by our accomplished chef. After dinner, gather for interpretive presentations by our naturalist Expedition Leaders, who share their extensive knowledge of Greenland's geology, glaciology, ecology and human history. And, though the sun gleams late into the evening just below the Arctic Circle, a good night's sleep is in order to refuel for the next day's adventures. Wrapped in profound silence in our isolated cabins, we're sure to get it. On our late-season departures, we may even have a chance to see the northern lights, if the aurora is active in the darkening night sky.



Day 8: Base Camp Greenland / Helicopter or Boat to Kulusuk / Coastal Walk

Our day begins with a last morning activity from Base Camp, which may be a hike over the tundra in search of wildflowers, or another option, depending on the weather. Then it's time to begin the long journey back to more civilized climes, as we first make our way back to Kulusuk by helicopter or boat, depending on conditions. On the return trip, survey jagged peaks and huge U-shaped valleys gouged by glaciers, forever awed by the grandeur of Greenland. On arrival in Kulusuk, we check in to our hotel surrounded by more of East Greenland's imposing mountains—the small town is a well-known gathering point for adventurers and scientists heading out to the ice sheet. If time permits, we'll take an exploratory coastal walk with sweeping views of icebergs and mountains before dinner.

Day 9: Private Glacier Walk / Kulusuk Town Tour & Drum Dancing / Keflavik

This morning, we board a boat to head out for a half-day glacier walk excursion. In addition to large chunks of ice calved from glaciers that feed the region's fjords, we may also see tabular icebergs—ocean-going slabs of ice, some of which have been drifting for months, driven down the coast by the strong East Greenland Current. Reaching a small island, we disembark to walk on a glacier, surrounded by spectacular views of fjords and mountain ranges. Atop its rough surface, examine unique formations such as moulins, which are whirlpool-like shafts in the ice. Walking farther, we reach a vantage point for a full view of the glacier's face, and if we're lucky, we might witness an iceberg calve into the sea.

Returning to Kulusuk, it's time to celebrate our extraordinary adventure over a farewell lunch at the hotel. In the afternoon, we'll explore the town and witness a private performance of traditional Greenlandic drumming and dancing, followed by our flight back to Iceland's Keflavik International Airport, arriving late this evening. We spend the night at an airport hotel nearby to facilitate easy connections for tomorrow's onward departures.

Day 10: Keflavik / Depart

A transfer is included from the hotel to Keflavik International Airport to meet departing flights.

***Please Note:** This itinerary is meant as a guideline and can change due to weather and ice conditions. Given the expeditionary nature of our trip, on some occasions, adverse conditions may require us to deviate from our intended itinerary, in which case we will provide the best available alternative. And we'll make a great adventure of it!*



Discovering Our Planet Together



Accommodation Details:

Hotel Reykjavik Saga

Hotel Angmagssalik

Base Camp Greenland

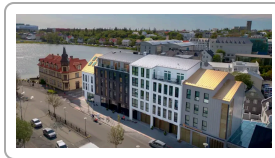
Hotel Kulusuk

Park Inn by Radisson Reykjavik Keflavik Airport

For detailed descriptions, visit nathab.com/europe/greenland-nature-adventure/accommodations

East Greenland Arctic Adventure Accommodations

Explore Arctic Wilderness from Our Luxury Expedition Camp in View of the Greenland Ice Sheet



Hotel Reykjavik Saga

This elegant new 4-star hotel in the heart of Reykjavik features sleek contemporary design elements and is just steps from all the city center attractions.



Hotel Angmagssalik

Perched high above the seaside village of Tasilaq in remote East Greenland, 30 simple yet comfortable rooms offer guesthouse-style ambience with stunning views from a spacious contemporary lounge.



Base Camp Greenland

A singular, exclusive refuge of rustic Arctic luxury surrounded by raw wilderness. Eight heated safari-style tent cabins offer exceptional comfort and amenities for these ultra-remote environs.



Discovering Our Planet Together



Hotel Kulusuk

The only lodging in this small and traditional Inuit community, Hotel Kulusuk enjoys a scenic perch on Greenland's rocky east coast, with views of Apusiaajik Glacier and Isikajia Mountain.



Park Inn by Radisson Reykjavik Keflavik Airport

Located in Keflavik just ten minutes from the airport, the hotel provides a convenient landing spot for our final night, with easy access for departing flights.



Nat Hab's Deluxe Base Camp — The Best Way to Experience Greenland!

For adventure travelers looking for the ultimate Arctic experience, this is it. Experience the rugged beauty of East Greenland in complete comfort, surrounded by some of the most remote wilderness on Earth. Previously this region was accessible only via hiking or kayaking while camping in tents, or on a very limited basis by boat via short day excursions. Base Camp Greenland brings our travelers an exceptional alternative—exclusively for Nat Hab guests.

1

An Exclusive Itinerary—We Go Where No One Else Does Only Natural Habitat Adventures offers this unique itinerary into an exceedingly remote realm of vast fjords, huge icebergs and close-range views of the Greenland ice sheet. While other outfitters offer trips to Greenland, most go to the west coast, which is where the bulk of the population lives. Virtually no commercial trips visit the east coast, and no one has the experience and expertise we do in the Sermilik Fjord complex.

2

The Only "Luxury" Base Camp in Greenland

Constructed in 2015 and still without competitors, our Arctic expedition camp offers comforts you'd never expect in this remote sector of Greenland, including hot showers, private toilets and chef-prepared gourmet meals. From camp, we have access to close-up views of the Greenland ice sheet by Zodiac. Our location near the edge of Sermilik Fjord grants us an eye-level vantage on huge icebergs floating by, and we often see whales and seals in the frigid waters.

3

A Small-Group Wilderness Immersion

Our camp accommodates a maximum of 13 travelers. This small group size ensures an experience of solitude in the wilderness and personal attention from our guides. It's a markedly different experience to explore Greenland this way, rather than with hundreds of other travelers aboard a cruise ship, all going ashore together. You'll also benefit from enlightening evening lectures presented by our guides, who are expert Arctic naturalists.

4

Scenic Helicopter Flight from Kulusuk to Tasiilaq

To expedite our arrival to Ammassalik Island where our Base Camp adventure begins, we make a scenic transfer via helicopter from Kulusuk to East Greenland's small administrative capital of Tasiilaq. Depending on weather and ice conditions, we may also utilize helicopter transfers over the snowcapped coastal mountains to return from Base Camp.



5

An Authentic Encounter with Contemporary Greenlandic Culture

In addition to our time at Base Camp, we spend time in Kulusuk; Tasiilaq, the capital of East Greenland; and the tiny village of Tinit, a 20-minute boat ride from camp. Learn about East Greenland's history and culture on walks, personal visits and a tour of the town museum in Tasiilaq. Most visitors never get to these remote communities, but our overnight stays allow us to meet the local Greenlandic Inuit, appreciate their enduring culture and traditions, and gain insight into the challenges and rewards of life in modern Greenland.

6

Unmatched Depth of Greenland Guiding Experience

Our company has more East Greenland experience than any other outfitter. Nat Hab colleague Olaf Malver pioneered commercial kayaking trips on Greenland's east coast in the 1980s, including many historic exploratory paddling "firsts," and his deep expertise has placed us in an unparalleled position today. We know a nature adventure is only as good as the guide at the helm, and we provide the very best! **See Expedition Leader bios** and traveler comments regarding the quality of our leaders.

7

The Absolute Best Equipment

As part of our unwavering commitment to safety and comfort, we use the best and most up-to-date expedition Zodiacs and kayaks available, as well as top-of-the-line safety gear. Our equipment is meticulously maintained, reducing the chance for unexpected mishaps. We also provide the highest-quality Mustang expedition suits for our guests' safety and warmth while on the water. When safety counts, only the best will do—and not every outfitter provides it.

8

Our Quality-Value Guarantee Ensures Your Outstanding Greenland Adventure

When you travel with Natural Habitat, you receive our exclusive guarantee, clearly stating that we will meet the lofty expectations we set in our promotional materials. To our knowledge, this is the most ambitious guarantee made by any adventure travel company.

9

Feel Good About Your Carbon-Neutral Journey

We care deeply about our planet, as we know you do. When you travel with us, the carbon emissions from your trip are 100% offset—including your round-trip flights from home. Natural Habitat Adventures has been the world's first carbon-neutral travel company since 2007.

10

Natural Habitat Adventures is WWF's Travel Partner

Because of our commitment to environmentally friendly travel, as well as the exceptional quality of our worldwide adventures, we have been chosen by World Wildlife Fund—the world's leading environmental conservation organization—as its worldwide travel partner, a designation that makes us exceedingly proud.



Make It Private with Your Family or Friends

Travel privately, exclusively with your immediate family, multi-generational family or group of friends. And when you choose a private departure, you're assured the most exclusive and authentic *East Greenland Arctic Adventure* on offer. Request your private departure by completing the form below.

Please note that on East Greenland Make It Private departures we require a minimum group size of 6 travelers.

Also, please be aware that your per-person cost on a Make It Private trip will vary depending on the number of travelers in your group and may be as much as 10%-30% higher (ship-based trips may be even higher) than our normal trip cost unless you fill the trip.

This **Make It Private** option is available on nearly every Nat Hab trip for family and friend groups. Call an Adventure Specialist at 800-543-8917 or look for the "Make It Private" icon in the **pricing section** of a trip online at nathab.com to see prices based on your specific group size.



Discovering Our Planet Together



Dates & Pricing Summary:

Prices:
From \$13795
(+Air)

Group Size:
Limited to 13
Travelers

Physical Requirements:
Moderate -
Remote

East Greenland Arctic Adventure Dates, Pricing & Info

Explore Arctic Wilderness from Our Luxury Expedition Camp in View of the Greenland Ice Sheet

2025 Departures

Departure	Return	Notes
Jul 13, 2025	Jul 22, 2025	Wildflower Season Pair with our Iceland trip Pair with our Iceland Photo Expedition Habitat Club Pricing Available
Jul 18, 2025	Jul 27, 2025	Wildflower Season Pair with our Iceland trip Pair with our Iceland Photo Expedition
Jul 24, 2025	Aug 2, 2025	Habitat Club Pricing Available
Aug 3, 2025	Aug 12, 2025	Climate Change Departure Pair with our Iceland trip
Aug 8, 2025	Aug 17, 2025	Women-Only Departure Pair with our Iceland trip or our Iceland Photo Expedition Habitat Club Pricing Available
Aug 19, 2025	Aug 28, 2025	

2026 Departures

Departure	Return	Notes
Jul 12, 2026	Jul 21, 2026	Wildflower Season Pair with our Iceland trip Pair with our Iceland Photo Expedition Pair with Iceland's Wild West



Dates & Pricing Summary:

Prices:
From \$13795 (+Air)

Group Size:
Limited to 13 Travelers

Physical Requirements:
Moderate - Remote

Departure	Return	Notes
Jul 23, 2026	Aug 1, 2026	Pair with our Iceland trip
Aug 2, 2026	Aug 11, 2026	Climate Change Departure Pair with our Iceland trip Pair with our Iceland Photo Expedition Pair with Iceland's Wild West
Aug 7, 2026	Aug 16, 2026	Pair with our Iceland trip Pair with our Iceland Photo Expedition Pair with Iceland's Wild West
Aug 18, 2026	Aug 27, 2026	Pair with our Iceland trip

2027 Departures

Departure	Return	Notes
Jul 11, 2027	Jul 20, 2027	
Jul 22, 2027	Jul 31, 2027	
Aug 1, 2027	Aug 10, 2027	
Aug 6, 2027	Aug 15, 2027	
Aug 17, 2027	Aug 26, 2027	



Pricing

2025 Prices

> **Trip Price**

\$13795 (+internal air)

Internal Air Cost: \$2377 per person (this will be listed separately on our invoicing).

Single Occupancy: For a single room add \$1595. If requested, we can also match you with a roommate. If we are unable to find you a match, you will not be charged for a single room.

Deposit: \$1000 per person (nonrefundable)

Make It Private: View pricing to take this trip privately with just you and your select travel companions.

Trip prices are per person based on double occupancy and are given in U.S. dollars.

Please read our Payment & Refund Policy here.



2026 Prices

Mouse over or tap dates above to view prices for specific departure dates.

> **Trip Price**

\$13995 (+internal air)

Internal Air Cost: \$2536 per person (this will be listed separately on our invoicing).

Single Occupancy: For a single room add \$1995. If requested, we can also match you with a roommate. If we are unable to find you a match, you will not be charged for a single room.

Deposit: \$1000 per person (nonrefundable)

Make It Private: View pricing to take this trip privately with just you and your select travel companions.

Trip prices are per person based on double occupancy and are given in U.S. dollars. **Please read our Payment & Refund Policy here.**

2027 Prices

We're still in the process of confirming 2027 pricing. Please contact an Adventure Specialist for more details: 800-543-8917.

Included

> **Trip price includes:** Accommodations, services of Nat Hab's professional Expedition Leaders, local guides and camp staff, all meals from dinner on Day 1 through breakfast on Day 10, select beer and wine at camp, some gratuities, airport transfers for those arriving by air on Day 1 and departing by air from Keflavik on final day, private whale watching tour, gear including Mustang expedition suits for Zodiac excursions and all kayaking equipment, all activities and entrance fees, all taxes, permits and service fees.

> **Internal air includes:** Round-trip flights between Reykjavik, Iceland and Kulusuk, Greenland, and a helicopter flight between Kulusuk and Tasiilaq (this will be listed separately on our invoicing).



Not Included

Travel to and from the start and end point of your trip, some alcoholic beverages, some gratuities, passport and visa fees (if any), optional activities, items of a personal nature (phone calls, laundry and internet, etc.), airline baggage fees, airport and departure taxes (if any), required medical evacuation insurance, optional travel protection insurance.

Physical Requirements

Moderate — Remote

Our East Greenland adventure is a **genuine wilderness experience** and expeditionary in nature, with each day's activities determined in part by weather and local conditions. Good health and general physical fitness are a must, as we are far from medical facilities in an area inaccessible by road. Walks and hikes are typically off-trail and often uphill, **requiring strong mobility and stability**. Although all activities are optional, and alternate activities are sometimes available at varying levels of physical demand, **all guests must be able to hike unassisted for at least two miles at a time over uneven, rocky and sometimes steep terrain without trails**. Our deluxe safari-style base camp, accessed boat transfer and/or short helicopter flight, is located in an **exceptionally remote and rugged area**. Guests must be prepared for activities that take place in such a setting and in unpredictable weather conditions, often being away from camp facilities for a full day. An optional guided glacier walk is included, and travelers must be comfortable hiking "off-trail" over wet and uneven terrain. This excursion requires the use of helmets and crampons (all specialized equipment is provided) and the glacier walk has a few steep parts. Kayaking is optional and no previous paddling experience is required, however you should be able to sit in a kayak and paddle for up to two hours should you wish to participate.

While at Base Camp, daily activities include nature walks or hiking, kayaking and Zodiac excursions of varying durations. We use **open Zodiac motorized rafts** to explore the fjord and access the shore for exploration, and landings can be unstable. Zodiac outings in the nearby fjords can last up to 8 or 9 hours (including stops), with opportunities for hikes ashore to explore geological and historic sights. We expect to operate in generally calm seas, but conditions can and do change quickly, and **we may be exposed in open boats to cold, windy or rainy weather for hours at a time**. Landings may be either wet or dry, and may require navigating over rocks or large boulders that can be slippery with seaweed and water. Our staff is available to assist for safety purposes, but guests need to be able to comfortably negotiate such uneven and unstable conditions, as well as be able to embark and disembark the Zodiac with minimal help. **Mobility and balance are essential** on this adventure.

On custom or private departures with smaller groups, our ability to accommodate varying levels of physical abilities or interests is limited, since these trips are staffed with a single Expedition Leader who may be assisted, pending availability, by local guides.



Important Information About This Trip

Our journey to Base Camp Greenland offers the only opportunity to encounter one of the planet's most isolated locations via luxury camping. As we head way off the grid on Greenland's remote east coast, guests must be prepared for all the vagaries that come with travel to such an isolated destination. These include inclement weather, varying ice conditions, and a scarcity of operational support, all of which makes a journey to our exclusive Base Camp Greenland an adventure in the truest sense. At times, flights may be canceled due to poor weather, routes may be closed due to changing ice conditions, and some amenities may become unavailable until a new shipment arrives. But the adventure is part of the excitement, and we will use our 25+ years of Greenland operating experience to make the best of even substantial itinerary changes, should they occur.

Terrain

Terrain in Greenland is mostly off-trail and more difficult than the terrain you might be accustomed to hiking on. **Click here to see example photos of walks and hikes from our adventure.** We take your safety and risk management seriously. If it is determined by the Expedition Leader(s) that you are physically unfit for certain activities, you will be required to sit out or stay back at camp.

Medical Form

Due to the extremely remote nature of this adventure, we require that all travelers submit a medical form before departure. This form must be completed and signed by your primary care physician.

Meals

Please understand that the meals at camp, while hearty and tasty, are specially planned and prepared for well in advance. Dietary requirements due to serious medical conditions or strict personal restrictions can be met, with ample notice, but must be adhered to while on the trip. If you have a restricted diet (such as vegetarian, gluten-free, vegan, dairy-free, etc), we recommend bringing some of your preferred snacks along with the appreciation that certain foods are limited in this part of the world, and there might not be many options at the Greenland hotels.

Flight Delays

It is possible that your flight to Greenland or back to Iceland could be delayed or cancelled due to inclement weather. In these cases, we provide alternate activities and accommodations during the trip time frame.

Safety

Your safety is of paramount concern to us. Toward that end, we provide highly competent guides with extensive experience in polar regions, and the very best equipment. Our guides are thoroughly trained in emergency wilderness first-aid techniques, traveling in polar bear terrain, and with maritime survival in polar waters. Ultimately, our guides make decisions with everyone's comfort and safety in mind, while trying to maximize the adventure experience for each individual. We must stress that listening carefully to your guide's instructions and directions is ultimately your responsibility and in your best interest and that of the group.

Specialized Equipment

We provide all group gear such as Mustang survival suits, kayaks and kayaking gear (dry suits, pogies, booties, PFDs) dry bags and a comprehensive first-aid kit and satellite communication devices for emergency communications. We will supply you with a comprehensive Clothing & Equipment list prior to your departure.



Mandatory Insurance

Since the areas we travel to on this trip are remote and wild (that's why we go there!), we require medical evacuation insurance for our guests' safety. If you decline the medical evacuation insurance coverage offered by Natural Habitat, we request that you send us documentation of the independent coverage you have selected. We will add the cost of a medical evacuation policy to your tour invoice until you provide our office with proof of coverage including your insurance company's name, contact number and your individual policy number. Thank you for understanding that our policy exists exclusively in the interest of our guests' safety.

Getting There & Getting Home

Please arrive in Reykjavik in time for a 5:30 pm briefing and dinner on Day 1. For those arriving by air, upon arrival at Keflavik International Airport you will be met by our representative and transferred to our hotel in Reykjavik, about an hour's drive.

Guests are free to depart anytime from Keflavik on the final day of the trip.

Weather can be extremely unpredictable in this part of the world, and our return flight from Greenland to Iceland can be delayed or canceled due to inclement weather or other unforeseen circumstances. Given this possibility, we recommend adding an extra night in Keflavik or Reykjavik to ensure you do not miss your connecting flight home.

We can best serve you if our Natural Habitat Adventures Travel Desk makes your reservations, as we are intimately familiar with the special requirements of this program and can arrange the most efficient travel. Also, in the case you might be delayed in Kulusuk, we would be able to make international flight changes on your behalf. Please call us at 800-543-8917 to have us book your flights, or to learn more. Note that while we offer you the best possible rates available to us on airfare and additional nights' accommodations, you may find special web rates or better fares online.



Discovering Our Planet Together



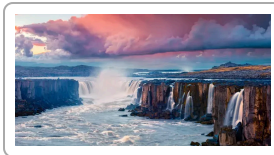
Extension Details:

Iceland: Circling the Land of Fire & Ice
\$15695

Ultimate Iceland Photo Expedition
\$17995

East Greenland Arctic Adventure Extensions

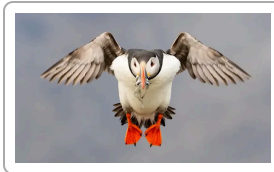
Explore Arctic Wilderness from Our Luxury Expedition Camp in View of the Greenland Ice Sheet



Iceland: Circling the Land of Fire & Ice

An immersive journey into the rugged grandeur of a land sculpted by intense geological forces. Make a full loop around Iceland on the most comprehensive nature adventure this compact country has to offer.

\$15695 (+air)



Ultimate Iceland Photo Expedition

Go longer, farther and deeper into the most remote corners of Iceland in pursuit of stunning landscape shots and native wildlife—with private flightseeing and boat tours for every possible perspective.

\$17995 (+air)



Natural Habitat & WWF: Discovering Our Planet Together

Natural Habitat Adventures • PO Box 3065 • Boulder, CO USA 80307

USA & Canada: 800-543-8917 • International: 303-449-3711

© 2025 Natural Habitat Adventures

WWF's membership travel program is operated by Natural Habitat Adventures (Nat Hab). To date, Nat Hab has provided more than \$6 million in support of WWF's mission and will continue to give 1% of gross sales plus \$175,000 annually through 2028. WWF® and ©1986 Panda Symbol are owned by WWF. All rights reserved.