



Discovering Our Planet Together



Discover Newfoundland & Labrador

Explore a Slice of Far-East Canada Where Wildlife & Raw Landscapes Reign



Discovering Our Planet Together

Table of Contents:

Trip Overview	3
Trip Itinerary	4
Trip Accommodations	10
What Makes Nat Hab Different?	12
Make It Private	14
Dates & Pricing Information	15



Discovering Our Planet Together



Trip Details:

Days

12 Days / Jun–Aug

Price

From \$13695 (+Air)

Physical Requirements
Moderate

Discover Newfoundland & Labrador

Explore a Slice of Far-East Canada Where Wildlife & Raw Landscapes Reign

Canada's most easterly province of Newfoundland and Labrador is indeed a realm of new-found discovery for nature travelers. Its rugged northern landscapes, profuse wildlife, rich history and cultural heritage combine to create a wealth of surprises for adventurers seeking a nature encounter beyond more well-trodden destinations. Here, the world's largest summer population of humpback whales plies the waters off the Avalon Peninsula, and 35 million seabirds, including huge colonies of Atlantic puffins, nest on the cliffs of myriad islands. Traditional fishing villages dot the coastline and a glacier-scoured landscape showcases rocks from the earth's mantle and oceanic crust. From the 400-year-old capital of St. John's, steeped in maritime heritage, to far-flung bays filled with marine life, Newfoundland and Labrador offers new realms for exploration.

Trip Highlights

View a diversity of whale species, see breeding colonies of Atlantic puffins and other prolific seabirds, and look for caribou and Arctic fox.

Explore the planet's geological evolution atop its exposed mantle in this World Heritage Site where the theory of plate tectonics was confirmed

Visit the historic fishing village of Battle Harbour, once a vibrant economic and cultural hub, now transformed into a living museum on remote Battle Island



Discovering Our Planet Together



Itinerary At A Glance

Day 1

St. John's, Newfoundland

Day 2

Witless Bay—Whale-Watching & Puffin Tour / Hiking / Petty Harbour-Maddox Cove

Day 3

St. John's / Trinity / Private Whale-Watching Cruise / Dinner Theater

Day 4

Bonavista Peninsula—Puffin Viewing / UNESCO Global Geopark / Cape Bonavista Lighthouse

Day 5

Trinity Historic Walking Tour / Skerwink Trail / Private Sunset Whale-Watching Cruise

Day 6

Private Flight and Transfer to Labrador / Battle Harbour National Historic Site

Days 7 & 8

Exploring Battle Harbour—Private Boat Tour

Discover Newfoundland & Labrador Itinerary

Explore a Slice of Far-East Canada Where Wildlife & Raw Landscapes Reign

Day 1: St. John's, Newfoundland

Arrive at St. John's International Airport where you're met and transferred to our downtown hotel. Situated on the eastern tip of the Avalon Peninsula on the island of Newfoundland in Atlantic Canada, St. John's is North America's easternmost city and one of the continent's oldest municipalities. Its rich cultural heritage blends Indigenous, English and Irish influences, some of which are on view in the downtown Quidi Vidi Trail, a series of interpretive panels and artwork. If time permits, explore on your own before gathering this evening for a welcome dinner and orientation with our Expedition Leader.





Discovering Our Planet Together

Itinerary At A Glance

Day 9

Mary's Harbour / Red Bay / Port au Choix, Newfoundland—Caribou Viewing

Day 10

Gros Morne National Park—Private Western Brook Pond Cruise

Day 11

Gros Morne National Park—Tablelands / Bonne Bay

Day 12

Deer Lake / Depart

Day 2: Witless Bay—Whale-Watching & Puffin Tour / Hiking / Petty Harbour-Maddox Cove

Our adventure begins with a boat cruise around Witless Bay, where nutrient-rich waters attract large numbers of migrating humpback whales each summer that feed, breach and slap the water in exhilarating displays. Keep an eye out for minke whales, too, plus blue and sperm whales, though such sightings are less common. Prolific seabirds are also a highlight. The Witless Bay Ecological Reserve consists of four islands that are home to North America's largest Atlantic puffin colony, with half a million puffins returning each spring and summer to nest. It is also a significant breeding site for about 50% of the Newfoundland and Labrador population of black-legged kittiwakes and home to the world's second-largest storm petrel colony, with more than 620,000 nesting pairs. Among the hundreds of thousands of seabirds nesting in Witless Bay, we also find murrelets, herring gulls, Atlantic razorbills and black guillemots.

Ashore, walk Tinkers Point Path from the woods to the rocky coastline. As we cross cobblestone beaches, enjoy unimpeded views of rocky shores and distant islands before reaching the scenic fishing community of Tors Cove. After a picnic lunch, continue to Petty Harbour-Maddox Cove, one of the oldest European settlements in North America. Continuously occupied since at least 1598, the town's current population of about 950 sustains itself with fishing and ecotourism. There's ample time to explore the maritime village on foot before a traditional Newfoundland seafood dinner and catching the sunset at the historic Cape Spear Lighthouse.

Day 3: St. John's / Trinity / Private Whale-Watching Cruise / Dinner Theater

A scenic three-hour drive is in store from St. John's to Trinity, the coastal village where *The Shipping News* was filmed. After lunch, we head to sea in search of Newfoundland's abundant whales on a two-hour private marine safari aboard an RHIB—a Rigid Hull Inflatable Boat, offering agility that bigger vessels don't have. The largest annual whale migration in the northern hemisphere starts off the Newfoundland coast in early June, with various species present until September or later. With our boat's low profile, we get close enough to whales to see barnacles on their underbellies as they breach, fish and play. As we follow the coast of Trinity Bay, passing scattered islands and remote communities, scout for humpback, fin, sperm and minke whales, orcas, dolphins and porpoises, seals, basking sharks, eagles, and seabirds including puffins, gannets and more.

Return to Trinity to enjoy some free time this afternoon, then regroup for a fun evening at Rising Tide Dinner Theater, a renowned drama company in operation since 1978. Producing plays that celebrate the province's storied past and contemporary voices, the company's performances are equally entertaining and educational. When weather permits, many performances take place outdoors.



Discovering Our Planet Together

Day 4: Bonavista Peninsula—Puffin Viewing / UNESCO Global Geopark / Cape Bonavista Lighthouse

Today's focus is the dramatic coast of the Bonavista Peninsula, which is home to hundreds of nesting pairs of Atlantic puffins. From Elliston, we take a short walk to the colony that roosts on a rocky outcrop, offering a close vantage for the best land-based puffin viewing in North America. Exploring the geology and natural history of the area, we witness the power of the ocean to relentlessly erode and reshape the soft sedimentary rock shoreline. This phenomenon is vividly demonstrated by a dramatic feature at Discovery UNESCO Global Geopark called The Dungeon. A large sinkhole formed by the collapse of two adjacent sea caves, The Dungeon will one day erode to become a single pillar known as a sea stack. We also visit Cape Bonavista Lighthouse, one of the most photographed in Newfoundland. Built in 1843 and painted in the classic red-and-white style of the region, the lighthouse contains a rare 19th-century catoptric lamp system that once burned seal oil to produce light.

This afternoon, our Expedition Leader leads us on a scenic hike offering more opportunities to explore the fascinating geology and striking coastal features of the area, with a refreshment stop at a local tearoom. Return to Trinity where we have dinner at a local restaurant and spend another night.

Day 5: Trinity Historic Walking Tour / Skerwink Trail / Private Sunset Whale-Watching Cruise

Enjoy a leisurely breakfast, then meet for a mid-morning walking tour of Trinity. Its rich heritage goes back more than 500 years, and we learn about the history of Trinity's many inhabitants over the centuries, including the Beothuk Indians, and French, Irish and English settlers. Experience its magnificent built and cultural history through stories, photos, burial records, shipwrecks and disasters as we time-travel through Newfoundland with our local guide, a Trinity native whose ancestors arrived in the "New Founde Land" from Dorset, England in the early 1800s.

After lunch, hike the Skerwink Trail with our Expedition Leader for stunning views of the rugged coastline, sea stacks, arches and beaches. Scan the deep blue ocean for humpback and minke whales as seals bask on the rocks at the base of cliffs. Seabirds abound, especially puffins, and we frequently see bald eagles soaring overhead. The trail passes historic Green Island Lighthouse, built in 1857, and the abandoned community of Murphy's Cove. Continue to Fort Point Lighthouse where we enjoy a classic Newfoundland summer dinner: a seafood boil on the ocean, followed by a sunset whale-watching cruise.



Day 6: Private Flight and Transfer to Labrador / Battle Harbour National Historic Site

From Gander, a small town that gained international recognition after the 9/11 attacks when it welcomed stranded passengers whose planes were diverted due to the closure of American air space, we board a private chartered flight to Blanc Sablon, a small village on the north coast of the Gulf of St. Lawrence. We transfer to a small bus and drive northeast along the Labrador coast to Mary's Harbour where we board a ferry for a scenic 9-mile ride through the waters of the Labrador coast. Weaving through narrow channels and passing various islands, our route takes us through calm inlets where seals, whales and other marine life congregate.

As we approach Battle Island, brightly painted cottages come into view, scattered along the hill overlooking the historic settlement. Ashore, step back in time as we explore this restored former fishing outpost. Despite its isolation and exposure to the harsh elements, Battle Harbour was once known as the "Capital of Labrador." For centuries, it served as an economic and cultural stronghold for the region's sparsely populated southeast coast, sustaining a thriving fishing community until the 1990s when the cod fishery drastically declined and the permanent settlement was abandoned. Restored by the Battle Harbour Historical Trust, Battle Harbour today is a car-free island without cell service or reliable Wi-Fi, offering overnight visitors (day tripping is not allowed) an uncrowded and immersive experience.

A tour of the settlement brings Battle Harbour's past to life. From the shoreline, scan the horizon for whales or look for Arctic fox as you traverse the small island on one of the many hiking trails that wind among Arctic vegetation and quirky rock formations. A sanctuary from modern distractions, Battle Harbour provides time and space to truly appreciate this grand landscape that has captivated people for centuries.



Discovering Our Planet Together

Days 7 & 8: Exploring Battle Harbour—Private Boat Tour

Over the course of two days, delve into Battle Harbour's origins as a fishery in the early 1770s, where fishermen would salt and preserve their catches. Witness its evolution into a thriving 19th-century fishing community and its modern incarnation as a living museum. Through interactive experiences and guided tours, we gain insight into the resilience and determination that allowed this isolated community to thrive in the face of harsh conditions as it relied on the bounty of the sea. Battle Harbour's well-preserved buildings, including its red-and-white striped lighthouses, salt fish and merchant's premises, offer a tangible link to the island's rich heritage.

On a popular short hike, wander through once-thriving communities, now abandoned, which offer a glimpse into the past. Stroll to Cape St. Charles, the easternmost point in North America, for views that have remained virtually unchanged for centuries. Explore Battle Harbour's maritime heritage on a private boat tour along the island's shoreline, or participate in a hands-on baking experience, learning to create sweet buns that have been an island staple for generations.

Day 9: Mary's Harbour / Red Bay / Port au Choix, Newfoundland—Caribou Viewing

An early morning ferry ride returns us to Mary's Harbour, looking for whales along the way, with sightings that could include blue, humpback, beluga, minke, sperm and fin whales. Ashore once more, we turn south to follow the Labrador coastline to Red Bay National Historic Site. With UNESCO World Heritage status, Red Bay encompasses the remains of a major 16th-century Basque whaling operation. Between 1550 and 1620, Red Bay was among the largest whaling ports in the world, attracting nearly 2,000 Basque whalers from Spain and France. They hunted bowhead and right whales, both currently endangered species, for their oil, used primarily as fuel for lighting in Europe at the time. Today, the archaeological remains include shipwrecks, rendering ovens, cooperages, and a cemetery containing the remains of 140 whalers.

L'Anse Amour, our next stop, is the oldest known burial mound in North America. Located in one of the largest and longest-used Aboriginal habitation sites in Labrador, occupied by the Maritime Archaic people between 9,000 and 2,000 years ago, the low circular mound of large stones measures about 25 feet in diameter. We also see Atlantic Canada's tallest lighthouse, at 109 feet. Then it's time to return to Newfoundland as we board a ferry across the Strait of Belle Isle, watching for more marine life. Continue to the fishing village of Port au Choix, home to a small resident caribou herd accustomed to human presence, allowing for close observation and photo opportunities.



Discovering Our Planet Together

Day 10: Gros Morne National Park—Private Western Brook Pond Cruise

Gros Morne National Park is acclaimed for its dramatic geology that provides a rare visible illustration of plate tectonics and the process of continental drift. A UNESCO World Heritage Site, the park contains exposed rocks from the earth's mantle and oceanic crust, which were thrust to the surface of the earth through a process called subduction around 500 million years ago. The geology also showcases events that occurred around 1.2 billion years ago when the ancient continental margin of North America collided with another continent and formed a vast mountain range. Explore this fascinating phenomenon this morning on a private boat ride on Western Brook Pond. Steep rock walls rising 2,000 feet high surround this spectacular fjord created by receding glaciers. Fed by Stag Brook and refreshed with numerous waterfalls, the pond formed when land rebounded following the melting of the glacier, creating a natural dam.

Continuing to Bonne Bay, we transfer to Gros Morne Inn for two nights. The remainder of the afternoon is free to enjoy the cedar sauna or hot tubs, or relax on the patio by the fire pit before dinner.

Day 11: Gros Morne National Park—Tablelands / Bonne Bay

Today we get a rare glimpse into an intriguing slice of the planet's geology at Tablelands, a glaciated landscape comprised of exposed mantle rock typically found deep within Earth's interior. Orange-brown in color, the rock, called peridotite, creates a barren landscape that stands in stark contrast to the surrounding verdant hills and valley. The terrain is devoid of vegetation due to a heavy concentration of metals that are toxic to most—but not all—plants. Perhaps not surprisingly, given the otherworldly atmosphere of the landscape, several carnivorous plants thrive here, and we view the most prolific, which survive mainly on insects.

Continue to Trout River, a fishing hamlet at the southern end of Gros Morne National Park. Renowned for its natural beauty and waterfront vistas, the popular town has is home to one of Newfoundland's most famous eateries, Seaside Restaurant. Tuck into a hearty lunch of fresh-caught seafood—lobster, mussels, crab and cod take center stage—sourced from the pristine cold waters that surround Newfoundland. After lunch, visit local artist studios or simply enjoy the serene setting of the Gros Morne Inn. Gather this evening for a festive farewell dinner, reveling in our shared discovery of this lesser-known side of Canada.

Day 12: Deer Lake / Depart

Transfer to Deer Lake Regional Airport for departing flights home.



Discovering Our Planet Together



Accommodation Details:

Alt Hotel St. John's

Rosewood Suites at Trinity

Battle Harbour Merchant Building

Torrent River Inn

Gros Morne Inn

For detailed descriptions, visit nathab.com/alaska-northern-adventures/explore-newfoundland-labrador/accommodations

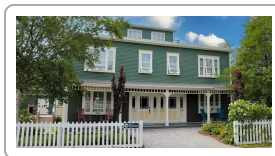
Discover Newfoundland & Labrador Accommodations

Explore a Slice of Far-East Canada Where Wildlife & Raw Landscapes Reign



Alt Hotel St. John's

This bright and modern hotel located on St. John's Harbor is a short drive to the airport, with trendy design features and rooms with floor-to-ceiling windows, down duvets and Egyptian cotton linens.



Rosewood Suites at Trinity

In a restored heritage building in the heart of downtown Trinity, this boutique hotel embodies early 20th-century charm with traditional furnishings, polished hardwood and a welcoming front porch.



Battle Harbour Merchant Building

This restored 200-year-old building overlooking the water, now an inn replete with historic decor, once served as the hub of mercantile operations for Battle Island's commercial fishing operation.

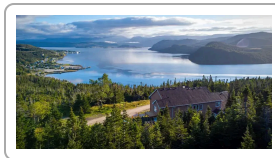


Discovering Our Planet Together



Torrent River Inn

A recently renovated riverside lodge located near some of northern Newfoundland's most famous wild destinations, the inn offers immediate access to the Torrent River and surrounding nature.



Gros Morne Inn

This sustainability-focused boutique ecolodge, new in 2022, showcases views of ocean and mountain through large picture windows, while a cedar sauna and hot tubs offers relaxation after adventuring.



A More Intimate Encounter with Newfoundland & Labrador

Complementing Newfoundland and Labrador's pristine nature is a rich tapestry of history and culture. Nat Hab gets you closest, in greater depth, to the province's wild, lesser-known natural features while also introducing you to its intriguing human heritage and hardy, hospitable people. Here are the features that make our trip so distinctive:

1

No One Shows You More of Newfoundland & Labrador Look closely at other itineraries:

We doubt anyone else gives you a more comprehensive, unhurried encounter with this little-visited province. You'll explore coastline and interior alike, with three days in Labrador alone—a rare inclusion on most other trips.

2

Save Time with Our Private Chartered Flight Between Newfoundland & Labrador

Our private flight between Gander, Newfoundland, and Blanc Sablon, Quebec, en route to Battle Harbour, Labrador, saves hours of driving, setting you up to explore much more of the region.

3

Skip the Crowds on a Private Boat Tour of Western Brook Pond Most visitors experience

this stunning freshwater fjord aboard a packed 75-passenger boat. We charter that same boat exclusively for our small group of 14 guests—you'll have a peaceful experience, and everyone gets a superlative view at the rail.

4

Spend Three Nights on a Remote Labrador Island Once the commercial fishing capital of the region, historic Battle Harbour today is a restored community on Battle Island, nine miles off the coast of Labrador. From this secluded base, look for icebergs, whales, and Arctic fox as we learn about the rewards and challenges facing Labrador's hardy mariners. No other trip we know of offers this in-depth immersion in this special place.

5

A Small Group Ensures Intimate Nature Encounters Unlike typical tours, our adventure is limited to just 14 guests. Our small group size allows exclusive access to secluded hikes and walks, privately chartered small boats, watching wildlife without disturbing it, and true serenity in nature. With our high guide-to-guest ratio—you'll travel with an Expedition Leader and a local guide—we can tailor daily activities to travelers' personal interests and physical ability levels, impossible to do in a larger group.



Discovering Our Planet Together

6

Intimate, Distinctive Accommodations Reflect Local Character Our small group size allows us to choose authentic inns noted for their history and atmosphere, and boutique ecolodges close to nature—a real contrast to larger, impersonal chain hotels.

7

The World's Finest Naturalist Guides Natural Habitat Adventures has a well-deserved global reputation for employing the highest-quality guides in the industry. Our Expedition Leaders have years of experience and training, including resources from WWF's top scientists. You won't find more knowledgeable—or more personable—guides than those who work with us. Our philosophy is simple: a nature adventure is only as good as the guide who leads it, so we provide the very best! **See Expedition Leader bios** with traveler comments regarding the quality of our leaders.

8

Our Quality-Value Guarantee Ensures Your Outstanding Experience With Natural Habitat Adventures, you receive our exclusive guarantee that clearly states that we will meet the high expectations we set forth in our promotional materials. To our knowledge, this is the most ambitious guarantee made by any adventure travel company.

9

Feel Good About Your Carbon-Neutral Journey We care deeply about our planet, as we know you do. When you travel with us, the carbon emissions from your trip are 100% offset—including your round-trip flights from home. Natural Habitat Adventures has been the world's first carbon-neutral travel company since 2007.

10

Natural Habitat Adventures is WWF's Travel Partner Because of our commitment to environmentally friendly travel, as well as the exceptional quality of our small-group nature adventures, World Wildlife Fund, the world's leading environmental conservation organization, has named Natural Habitat Adventures its worldwide travel partner—a designation that makes us exceedingly proud!



Discovering Our Planet Together

Make It Private with Your Family or Friends

Travel privately, exclusively with your immediate family, multi-generational family or group of friends. And when you choose a private departure, you're assured the most exclusive and authentic Newfoundland & Labrador adventure on offer.

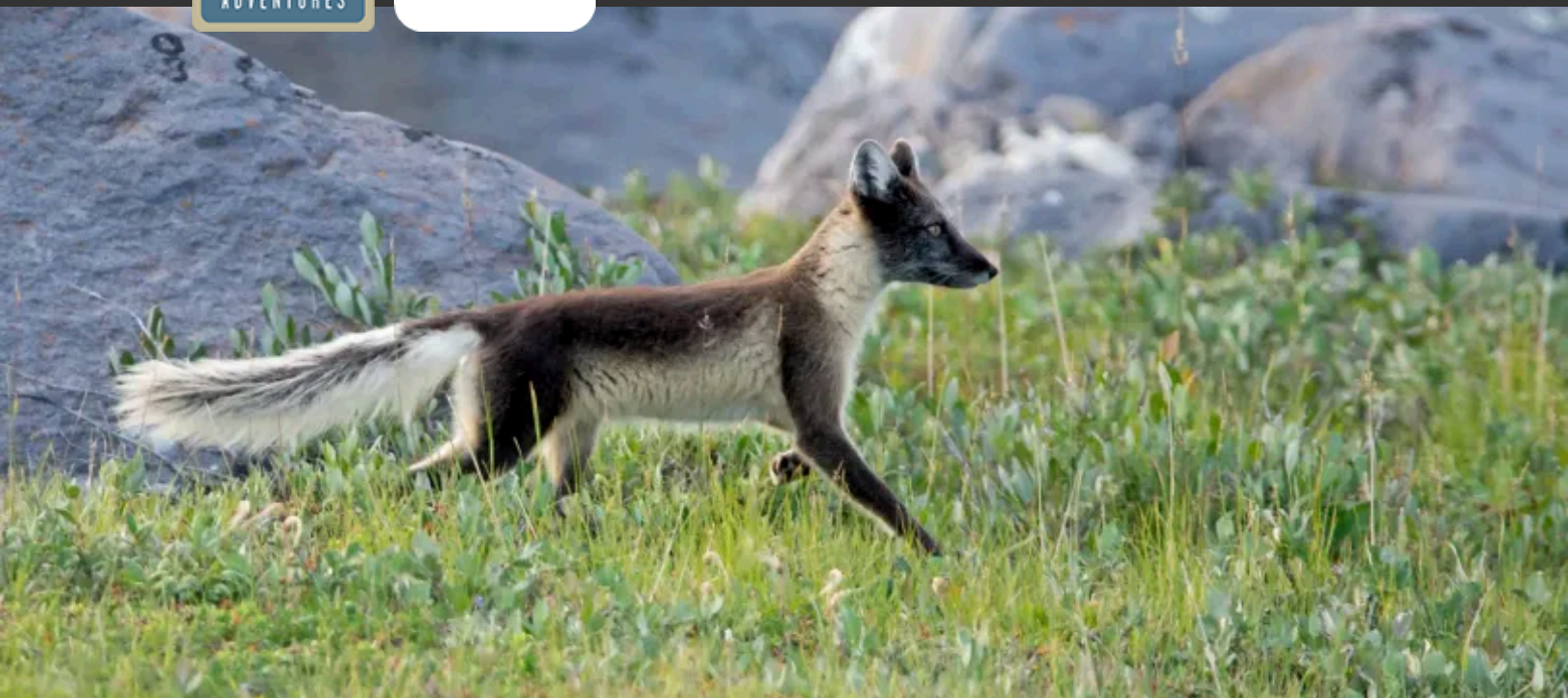
Please note that on Newfoundland & Labrador Make It Private departures we require a minimum group size of 7 travelers.

Also, please be aware that your per-person cost on a Make It Private trip will vary depending on the number of travelers in your group and may be as much as 10%-30% higher (ship-based trips may be even higher) than our normal trip cost unless you fill the trip.

This **Make It Private** option is available on nearly every Nat Hab trip for family and friend groups. Call an Adventure Specialist at 800-543-8917 or look for the "Make It Private" icon in the **pricing section** of a trip online at nathab.com to see prices based on your specific group size.



Discovering Our Planet Together



Dates & Pricing Summary:

Prices:
From \$13695
(+Air)

Group Size:
Limited to 14
Travelers

Physical Requirements:
Moderate

Discover Newfoundland & Labrador Dates, Pricing & Info

Explore a Slice of Far-East Canada Where Wildlife & Raw Landscapes Reign

2025 Departures

Departure	Return	Notes
Jun 22, 2025	Jul 3, 2025	
Jul 6, 2025	Jul 17, 2025	
Jul 13, 2025	Jul 24, 2025	
Jul 20, 2025	Jul 31, 2025	
Aug 3, 2025	Aug 14, 2025	

2026 Departures

Departure	Return	Notes
Jun 21, 2026	Jul 2, 2026	
Jun 28, 2026	Jul 9, 2026	



Discovering Our Planet Together

Dates & Pricing Summary:

Prices:

From \$13695
(+Air)

Group Size:

Limited to 14
Travelers

Physical Requirements:

Moderate

Departure	Return	Notes
Jul 5, 2026	Jul 16, 2026	
Jul 12, 2026	Jul 23, 2026	
Jul 19, 2026	Jul 30, 2026	
Jul 26, 2026	Aug 6, 2026	
Aug 2, 2026	Aug 13, 2026	
Aug 9, 2026	Aug 20, 2026	
Aug 16, 2026	Aug 27, 2026	
Aug 23, 2026	Sep 3, 2026	

2027 Departures

Departure	Return	Notes
Jun 20, 2027	Jul 1, 2027	
Jul 4, 2027	Jul 15, 2027	
Jul 11, 2027	Jul 22, 2027	
Jul 18, 2027	Jul 29, 2027	
Aug 1, 2027	Aug 12, 2027	
Aug 9, 2027	Aug 20, 2027	
Aug 16, 2027	Aug 27, 2027	



Discovering Our Planet Together

Pricing

2025 Prices

➤ Trip Price

\$13695 to \$13995 (+internal air)



Internal Air Cost: \$988 per person (this will be listed separately on our invoicing).

Single Occupancy: For a single room add \$2495. **Click here** to learn how you can avoid the single supplement.

Deposit: \$500 per person (nonrefundable, but transferable)

Prices are per person based on double occupancy and are given in U.S. dollars. **Please read our Payment & Refund Policy here.**

2026 Prices

Mouse over or tap dates above to view prices for specific departure dates.

➤ Trip Price

\$14695 to \$14995 (+internal air)

Internal Air Cost: \$994 per person (this will be listed separately on our invoicing).

Single Occupancy: For a single room add \$2495. **Click here** to learn how you can avoid the single supplement.

Deposit: \$500 per person (nonrefundable, but transferable)

Prices are per person based on double occupancy and are given in U.S. dollars. **Please read our Payment & Refund Policy here.**

Included

- **Trip price includes:** Accommodations, services of Nat Hab's professional Expedition Leader, local guides, whale watching and puffin viewing excursions, private boat tour of Western Brook Pond, evening wildlife and cultural presentations, all meals from dinner on Day 1 through breakfast on final day, some gratuities, all ferry transfers, airport transfers on Day 1 and final day, all activities and entrance fees, all taxes, permits and service fees.
- **Internal air cost includes:** Private charter flight from Gander to Blanc Sablon (this will be listed separately on our invoicing).

Not Included

Travel to and from the start and end point of your trip, most alcoholic beverages, gratuities for your Expedition Leader, passport and visa fees (if any), optional activities, items of a personal nature (phone calls, laundry and internet, etc.), international airline baggage fees, airport and departure taxes (if any), required medical evacuation insurance, optional travel protection insurance.



Physical Requirements

Moderate

In order to participate in this trip, you must be able to walk unassisted at a steady pace for a minimum of 3 miles at a time over uneven terrain. Our itinerary involves daily walks or hikes over a variety of surfaces, including single-track hiking trails that can be muddy, slippery and uneven with roots and rocks (please note that all walks can be more difficult to navigate during inclement weather). Some hikes involve walking up and down hills or may include stairs.

Accommodations throughout the trip have rooms only accessed via stairs with no elevator access, so you must be able to walk up and down a few flights of stairs comfortably. Battle Harbour, where we spend 3 nights, is located on an island without paved streets or cars, so guests must be able to walk to and from meals and the boat dock. The small island is just .62 miles (1 km) long and .31 miles (1/2 km) wide so walking distances are relatively short. Most accommodations are less than 200 meters from the dining hall.

Several boat and ferry trips are also included, and while we generally spend time in more sheltered waters, there can be periods of rougher water during our excursions. Travelers concerned about bumpy movement or who are prone to seasickness should take this into consideration and may wish to take precautions. All travelers must also be able to get into and out of RIB boats, Zodiacs (rigid rubber boats) and other types of boats with minimal assistance. The trip involves many very early morning starts and long, full days of activities with little down time. Some drives between locations are long (3-5 hours or longer, depending on local conditions).

On custom or private departures with smaller groups, our ability to accommodate varying levels of physical abilities or interests is limited, since these trips are staffed with a single Expedition Leader who may be assisted, pending availability, by local guides.

Important Information About This Trip

Our journey to Newfoundland and Labrador offers an exclusive opportunity to encounter eastern Canada's rugged landscapes as few travelers do. We immerse ourselves in this landscape and explore more of it than any competitor. As we delve into the remote lands and coastlines, guests must be prepared for adventure, solitude and culinary elements.

Meals

Newfoundland and Labrador are renowned for abundant and high-quality seafood sourced from the cold, pristine North Atlantic. Guests with allergies or strong aversion to seafood must be aware that many of the meals on this trip showcase local seafood. Dietary requirements due to serious medical conditions or strict personal restrictions can be met, with ample notice.

Transportation

Where possible, we have scheduled flights between destinations to minimize long drives. However, some of our remote stops are accessible only by roads, and travelers should be prepared for several long drives over the course of the trip.



Mandatory Insurance

Since the areas we travel to are remote and wild (that's why we go there!), we require that all guests have, at minimum, medical evacuation insurance for this program. This is for the safety of all guests. We require that your chosen independent insurance plan includes at least \$250,000 in medical evacuation coverage.

To protect your investment and to provide peace of mind while you travel, we also strongly recommend purchasing comprehensive travel insurance. Plans may cover everything from medical treatment to trip cancellations and delays and lost luggage. Please contact our office if you would like more information about the medical evacuation and comprehensive travel insurance policies we offer by calling 800-543-8917.

Getting There & Getting Home

We recommend that you arrive in St. John's by 4 pm on Day 1 in order to join your group orientation at the hotel at 6 pm. The arrival transfer from the airport to the group hotel in St. John's is usually around 15 minutes. You are free to depart Deer Lake any time on the final day of the trip, though keep in mind that your transfer from the group hotel in Gros Morne to the Deer Lake Regional Airport will take about 1 hour. Early morning departure flights out of Deer Lake will therefore require a very early wakeup.



Natural Habitat & WWF: Discovering Our Planet Together

Natural Habitat Adventures • PO Box 3065 • Boulder, CO USA 80307

USA & Canada: 800-543-8917 • International: 303-449-3711

© 2025 Natural Habitat Adventures

WWF's membership travel program is operated by Natural Habitat Adventures (Nat Hab). To date, Nat Hab has provided more than \$6 million in support of WWF's mission and will continue to give 1% of gross sales plus \$175,000 annually through 2028. WWF® and ©1986 Panda Symbol are owned by WWF. All rights reserved.