



Discovering Our Planet Together



Grand Canyon, Bryce & Zion

Iconic Vistas & Magical Light—Discover the Red Rock Wonders of the American Southwest



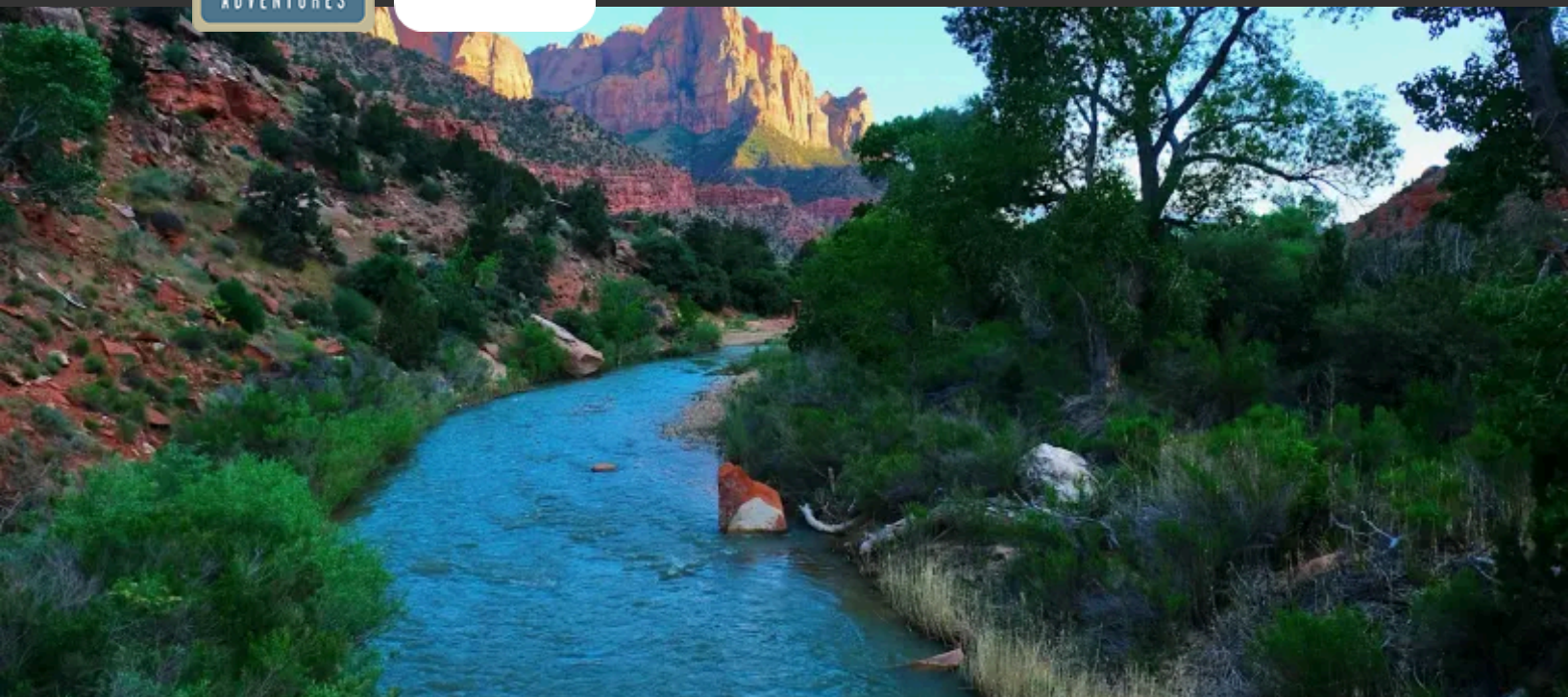
Discovering Our Planet Together

Table of Contents:

Trip Overview	3
Trip Itinerary	4
Trip Accommodations	9
What Makes Nat Hab Different?	11
Make It Private	14
Dates & Pricing Information	15



Discovering Our Planet Together



Trip Details:

Days

8 Days / May–
Jun & Sep–Oct

Price

From \$6995

Physical Requirements

Moderate

Grand Canyon, Bryce & Zion

Iconic Vistas & Magical Light—Discover the Red Rock Wonders of the American Southwest

Standing on the edge of the Grand Canyon, searching the shadowy depths for the silver ribbon of the Colorado River thousands of feet below, we are overcome by wonder at our own tiny instant in geological history. The canyon's sedimentary layers, stacked more than a mile thick, are a calendar for the millennia, formed by the erosive power of water and wind over eons. While this region is known as Red Rock Country, the canyon walls glow gold, rose, rust and violet, ever-changing as the high desert light works its magic. No less moving are neighboring Bryce and Zion, whose pink pinnacles and soaring sandstone ramparts round out this trio of famed Southwest national parks. Explore highlights and hidden corners of all three on this classic Western nature adventure, guided by natural history experts.

Trip Highlights

Gaze into the multihued layers of the Grand Canyon from less-visited overlooks on the North Rim, as our Expedition Leader unveils millennia of natural history

Witness the geological drama of Zion National Park, Smith Mesa, Kolob Canyons and surrounding environs with thrilling aerial views on a private helicopter flight

Bryce, Zion and Grand Canyon are all International Dark Sky reserves: Ignite your awe as you observe through telescopes with a Bryce Canyon park ranger



Discovering Our Planet Together



Itinerary At A Glance

Day 1

St. George, Utah

Day 2

Cedar Breaks National Monument
/ Bryce Canyon National Park—
Dark Sky Experience

Day 3

Hiking in Bryce Canyon National
Park

Day 4

Bryce Canyon Sunrise / Zion
National Park

Day 5

Hiking in Zion National Park /
Scenic Helicopter Flight

Day 6

Morning Hike in Zion / Grand
Canyon National Park—North Rim

Day 7

Grand Canyon Sunrise / Hiking
the North Rim

Grand Canyon, Bryce & Zion Itinerary

Iconic Vistas & Magical Light—Discover the Red Rock Wonders of the American Southwest

Day 1: St. George, Utah

Our canyonlands adventure begins in the red rock country of St. George, Utah. This evening we meet for a welcome dinner at a local restaurant. Our Expedition Leader offers a brief orientation to the history, geology, wildlife and ecology of the Colorado Plateau, which we explore in depth on our foray through three of the world's most magnificent national parks.





Discovering Our Planet Together

Itinerary At A Glance

Day 8

Grand Canyon / St. George /
Depart

Day 2: Cedar Breaks National Monument / Bryce Canyon National Park—Dark Sky Experience

En route to Bryce Canyon, we stop at several scenic spots including Cedar Breaks National Monument. From the rim at 10,350 feet, gaze down into a half-mile-deep geological amphitheater of stacked orange layers, fins and pinnacles. Dynamic natural forces over millennia have exposed and sculpted this terraced terrain topped with ancient bristlecone pines and subalpine forest. Cedar Breaks crowns the Grand Staircase, which our itinerary follows throughout the trip as we descend this series of five sedimentary “steps” into ever older geological features, each characterized by a different color and biome over a time span of more than 200 million years.

Later this afternoon we reach Bryce Canyon. The national park was established in 1925 to protect and draw visitors to its fantastical landscape, which feels like a portal to another world. Its pink pinnacles, limestone formations and natural amphitheaters capture the imagination with geological surprises. Red rock walls are rent with deep channels while whimsical hoodoos—rock spires carved eons ago by erosion—rise hundreds of feet into the sky. Rising early to watch the sunrise and lingering over radiant sunsets, experience the ever-changing grandeur of this astounding landscape.

After dark, another wonder awaits: a chance for some of the best stargazing in North America. The night skies around Bryce are some of the darkest in the United States, thanks to the park’s high elevation above 8,000 feet, its remote location, and its clear, clean air. Joined by a park ranger, we head just outside the park bounds, away from any artificial light, to witness the night sky through telescopes. Offering an extraordinary view of the cosmos, Bryce holds International Dark Sky status, and the absence of light pollution reveals more than 7,500 stars on a clear night, while the Milky Way arcs in a luminous band across the dark tapestry overhead. During a new moon, the sight is otherworldly, as planets, constellations and distant galaxies seem close enough to touch.

Day 3: Hiking in Bryce Canyon National Park

Today we discover Bryce Canyon on foot, the only way to explore its intricate sedimentary depths at close range. Guided by our Expedition Leader, we drop below the rim on series of switchback trails that descend 550 feet into the lower canyon, where we find pinyon pines and junipers. Heading back up again, gain a different perspective on the forest of hoodoos as we weave among their unique shapes [Guests who don’t wish to tackle the elevation gain can walk the paved trails on the rim.] In the afternoon, more opportunities await to explore Bryce from different vantage points, including a panorama across the vast landscape of the natural amphitheater crowded with hoodoos.



Discovering Our Planet Together

Day 4: Bryce Canyon Sunrise / Zion National Park

Given our optimal location near the rim, it's easy to rise early to watch the sunrise over Bryce Canyon. We witness a striking array of colors as the changing light illumines the stone pinnacles and sheer cliffs. A morning hike offers yet more angles on this wondrous landscape, more evocative with each turn in the trail.

Then it's time to head for Zion National Park on one of the most scenic drives in the American Southwest. Keep an eye out for bighorn sheep as we follow the narrow two-lane road that cuts through canyons and twists below towering monoliths. As we approach Zion, we pass Checkerboard Mesa, a 6,250-foot landmark of striated Navajo Sandstone. Early Mormon pioneers gave Zion its name—so striking was its beauty that it evoked images of the biblical Promised Land. The U.S. government agreed and made it a national park in 1919. Multi-hued sandstone ramparts rise above the valley floor where the Virgin River flows among the cottonwoods, carving a deep canyon over millennia and blending lush greenery with dramatic rockscapes.

Day 5: Hiking in Zion National Park / Scenic Helicopter Flight

Begin the day exploring Zion Canyon on foot, following narrow trails below 2,000-foot cliffs of Navajo Sandstone that soar above us on either side. On the canyon floor, see lush and colorful hanging gardens growing out of the rock. Trails along the river lead to quiet recesses, where we may hear and see many birds unique to the American West. Listen for the haunting cry of canyon wrens, look to the skies overhead for golden eagles and prairie falcons, and find American dippers and phoebes in the willows along the riverbanks. Then climb higher for dramatic views of the towering canyon walls and shadowy depths below. Varied overlooks reveal different vantage points on Zion's geological drama, as we witness the tremendous power of water and wind to sculpt this landscape.

A highlight of our visit is a helicopter flight in and around Zion National Park, featuring aerial views of Smith Mesa, Kolob Canyons and Red Butte Mountain, in addition to notable landmarks of the park itself.



Day 6: Morning Hike in Zion / Grand Canyon National Park—North Rim

Following a peaceful morning hike in Zion, we travel south to one of America's most iconic national parks: Grand Canyon, established in 1919. Lying entirely within the state of Arizona, the park encompasses 278 miles of the Colorado River and adjacent plateau. Located on the ancestral homelands of 11 tribal communities that hold the space sacred, Grand Canyon is one of the most spectacular examples of erosion anywhere on Earth. Humans have lived in the Grand Canyon region for 25,000 years, a mere blip in time compared to the 1.7 billion-year-old Vishnu Schist rocks visible along the Colorado River in the bottom of the canyon.

The Grand Canyon's popularity can mean many visitors, so we avoid the bulk of the crowds by concentrating on the less-visited but no less spectacular North Rim. It sees just 10% of the total number of visitors to the national park each year, most of whom stay on the far more developed South Rim. We spend two nights at Grand Canyon Lodge, tucked among the ponderosa pines at 8,000 feet on the canyon's edge. The classic lodge, now a National Historic Landmark, is the only accommodation inside the park on the North Rim. Built in 1928 by architect Gilbert Stanley Underwood, the lodge on Bright Angel Point was constructed of native Kaibab limestone and heavy timber logs that capture the rustic national park style of the era. After a fire four years later, it was rebuilt in 1936, preserving the original stone, and that venerable structure endures today.

With two days here, there's plenty of time to explore and absorb the drama of one of the planet's most magnificent natural landscapes, watching the variegated canyon walls change color as the light shifts throughout the day.



Day 7: Grand Canyon Sunrise / Hiking the North Rim

No western adventurer should miss gazing into the mile-deep chasm of the Grand Canyon in the ethereal light of sunrise and sunset, and it's easy to do since from our coveted location right on the rim. Our Expedition Leader knows the best overlooks to capture the beauty of sunrise, including Cape Royal and Point Imperial, though really, any spot on the rim is going to offer a stunning experience. Sunset will likewise bring astonishment as we watch the canyon depths shift from orange and rust to pink and purple as the sinking sun casts its glow in contrast to with the shadows moving across the etched peaks and crevasses.

We spend the day on several hikes, tapping the deep knowledge of our Expedition Leader who knows the best trails and viewpoints for a more secluded encounter with this extraordinary geological phenomenon. Admire vistas from different viewpoints along the rim and just below, enjoying moments of relative solitude away from the crowds that frequent the opposite side. Tonight, we share a farewell dinner together at the lodge. Then, step out onto the stone terrace once night falls for a final chance to stargaze: Grand Canyon National Park was recognized as an International Dark Sky Park in 2019, after a three-year endeavor to protect its night skies by altering light fixtures and taking measures to reduce light pollution.

Day 8: Grand Canyon / St. George / Depart

Rise at dawn for a last sunrise over the North Rim before we depart after breakfast. Leaving the red rock wonders of the America's canyon country behind, our Grand Canyon tour concludes as we travel back to St. George, arriving in time for afternoon flights home (book no earlier than 12:30 pm). **Please note:** *This itinerary is subject to change, as departures may visit Grand Canyon, Zion and Bryce in a different order than what is outlined above. Your precise itinerary will be communicated to you once your trip dates are confirmed.*



Discovering Our Planet Together



Accommodation Details:

Hyatt Place St. George

Bryce Canyon Lodge

Ruby's Inn

Bryce Canyon Grand Hotel

SpringHill Suites Zion

Zion Lodge

Grand Canyon Lodge

For detailed descriptions, visit
nathab.com/us-national-parks-tours/canyons-adventure/accommodations

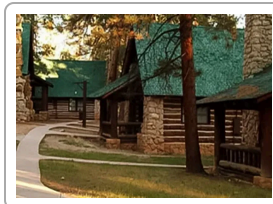
Grand Canyon, Bryce & Zion Accommodations

Iconic Vistas & Magical Light—Discover the Red Rock Wonders of the American Southwest



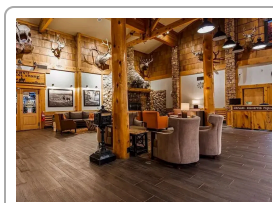
Hyatt Place St. George

The premier place to stay in St. George, Hyatt Place offers a central location, grand views of the red rock surroundings, and large, light-filled rooms in earthy desert tones.



Bryce Canyon Lodge

This venerable 1920s lodge stands alone inside the national park, offering rustic cabins, contemporary hotel rooms and unrivaled access to trails, stunning views and the Bryce Amphitheater.

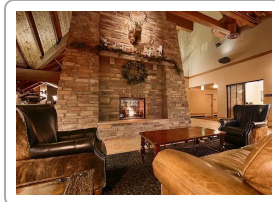


Ruby's Inn

Opened to Bryce Canyon visitors as "Tourist Rest" in 1919, the original historic lodge was rebuilt after a 1984 fire yet retains the same family-run hospitality with a fourth generation at the helm.



Discovering Our Planet Together



Bryce Canyon Grand Hotel

The newest lodging in the Bryce Canyon area, this highly acclaimed full-service hotel offers deluxe accommodations in spacious 350-square-foot guest rooms



SpringHill Suites Zion

Just a mile from the entrance to Zion National Park, this stylish jumping-off point for exploring Utah's canyonlands offers spacious modern suites filled with natural light and red rock views for breakfast.



Zion Lodge

The only accommodation located inside the national park, Zion Lodge offers coveted proximity and classic 1920s atmosphere, backdropped by the canyon's massive sandstone ramparts.



Grand Canyon Lodge

The North Rim's only lodging inside the national park, this historic 1928 lodge on Bright Angel Point was built in harmony with nature using native Kaibab limestone and ponderosa pine timbers.



See the Corners, Colors & Characters Most Visitors Miss

While travelers may be familiar with the sweeping panoramas and fantastic formations of Bryce, Zion and the Grand Canyon, few get to experience these iconic national parks off the conventional track. Relegated to bus tours or navigating crowded park roads in your own vehicle, along with heavily traveled trails, most visitors miss a quieter encounter with the Southwest's magnificent monuments, including secret spots revealed by our in-the-know guides. Here's what makes our approach better:

1

Experience All the Wonder & None of the Hassle Zion, Bryce and Grand Canyon are some of America's most popular parks, globally coveted destinations. It's imperative to book accommodations months out, and the in-demand park lodges often fill within hours of space made available annually. Most visitors end up fighting to see the sights with hundreds of other visitors, juggling brochures, maps and guidebooks. When you travel with us, you'll worry about none of that: we arrange the best places to stay, provide outstanding interpretation, and show you hidden corners of the parks via our "insider" knowledge.

2

Small Groups Led by Two Expedition Leaders Our trips are limited to 13 travelers. Each is guided by two Expedition Leaders, for the utmost in flexibility, quiet nature encounters and personalized service. We divide into even smaller groups, traveling in two vehicles that can access places buses can't reach, while providing the opportunity to pursue different activities to suit varying physical ability levels.

3

Private Helicopter Flightseeing over Zion & Surroundings

Gain a rare and thrilling perspective on Zion's canyon walls and neighboring geological formations, including Smith Mesa and Kolob Canyons, on a 20-minute private helicopter flight covering 35 miles. Our swift aircraft flies low enough for an exhilarating view on the intricate landscapes below, offering panoramic vistas you can't get on the ground.

4

Dark Sky Experience in Bryce Canyon

Bryce Canyon, like the other two parks we visit, holds International Dark Sky designation. Once night falls, we head out with a park ranger to view an astonishing array of glittering stars under some of the darkest night skies on Earth, viewing planets, constellations and galaxies through high-powered telescopes.



Discovering Our Planet Together

5

A Quieter Experience of the Grand CanyonFor a less-crowded experience of the Grand Canyon, our North Rim itinerary delivers. More remote and harder to get to, the North Rim evokes a feel for what the Grand Canyon was like decades ago, when the predominant sound was wind in the pines, and you could wander trails on the rim without huge crowds.

6

Take Part in Both Classic and One-of-a-Kind ActivitiesOf course we include coveted highlights, like walking along the Virgin River in Zion and an optional Grand Canyon mule ride. But we also add more unusual sights and pursuits that most visitors don't have access to. Our Expedition Leaders are intimately familiar with this region and introduce you to the crannies, cultures and local characters that make it truly come alive.

7

Enjoy Personal Interactions with Local ResidentsWhile the geology of the Southwest is the greatest draw of canyon country, the human history of the region is also fascinating. From Native Americans to Mormon pioneers, from cowboys to river runners, explorers and settlers of the canyons have inspired their fellow humans for eons. You'll get to meet some of the local people who have a history here—and a few stories to tell.

8

Chase the Best Light for Dramatic Vistas and PhotographyThe overhead sunlight is a dominant midday feature in the desert Southwest. But it doesn't make for the best views of canyon country, let alone photos. That's why we pursue light conditions that enhance the geological drama we've come to see. We rise early to catch the first rays of dawn bathing the rock formations in a vermillion glow. As the morning sun climbs, it reveals a shifting palette that transforms the natural bridges, cliffs and canyon walls. And we linger at sunset, watching the colors glow, deepen and fade.

9

Nat Hab's Exclusive North America Safari Cruisers Enhance Viewing

Our are customized luxury vans that are exceptionally comfortable and equipped with either a pop-top roof or wide roof hatches that open for unimpeded sightseeing and photography. Designed for exploring America's national parks, they offer the best of both necessities: an expedition-ready exterior and a spacious, luxurious interior for the ultimate in comfort. We never fill them to capacity, so every guest gets a window seat plus plenty of room for your personal belongings.

10

Stay in the Most Coveted Locations

We select atmospheric inns and lodges for their ambience and proximity to nature, including two famous hotels inside the parks—Bryce Canyon Lodge and Grand Canyon Lodge on the North Rim (ask for details re: specific hotels on your chosen departure date, which may vary). Staying at these fine rustic inns that are a classic part of national park heritage adds to your experience—and you don't have to scramble for reservations, which are almost impossible to get on your own.



Discovering Our Planet Together

11

Our Guides Know Canyon Country Intimately With decades of collective experience, our naturalist guides know where to find the “paths less traveled” for wildlife watching and striking views. They have secret spots where we can avoid the swarms of tourists that besiege the parks' most crowded locations, and they'll inform you about every aspect of the region's wildlife, geology, natural history and Indigenous cultures. With lots of surprises up their sleeves, our Expedition Leaders share a side of Canyon Country most visitors miss. **See Expedition Leader bios** with traveler comments regarding the quality of our leaders.

12

Our Quality-Value Guarantee Ensures an Exceptional Canyons Experience With Natural Habitat Adventures, you receive our exclusive guarantee that clearly states that we will meet the high expectations we set forth in our promotional materials. To our knowledge, this is the most ambitious guarantee made by any adventure travel company.

13

Feel Good About Your Carbon-Neutral Journey We care deeply about our planet, as we know you do. When you travel with us, the carbon emissions from your trip are 100% offset—including your round-trip flights from home. Natural Habitat Adventures has been the world's first carbon-neutral travel company since 2007.

14

Natural Habitat Adventures Is World Wildlife Fund's Travel Partner

Because of our commitment to environmentally friendly travel, as well as the exceptional quality of our small-group nature adventures, World Wildlife Fund, the world's leading environmental conservation organization, has named Natural Habitat Adventures its worldwide travel partner—a designation that makes us exceedingly proud!



Discovering Our Planet Together

Make It Private with Your Family or Friends

Travel privately, exclusively with your immediate family, multi-generational family or group of friends. And when you choose a private departure, you're assured the most exclusive and authentic Grand Canyon, Bryce & Zion adventure on offer. Request your private departure by completing the form below.

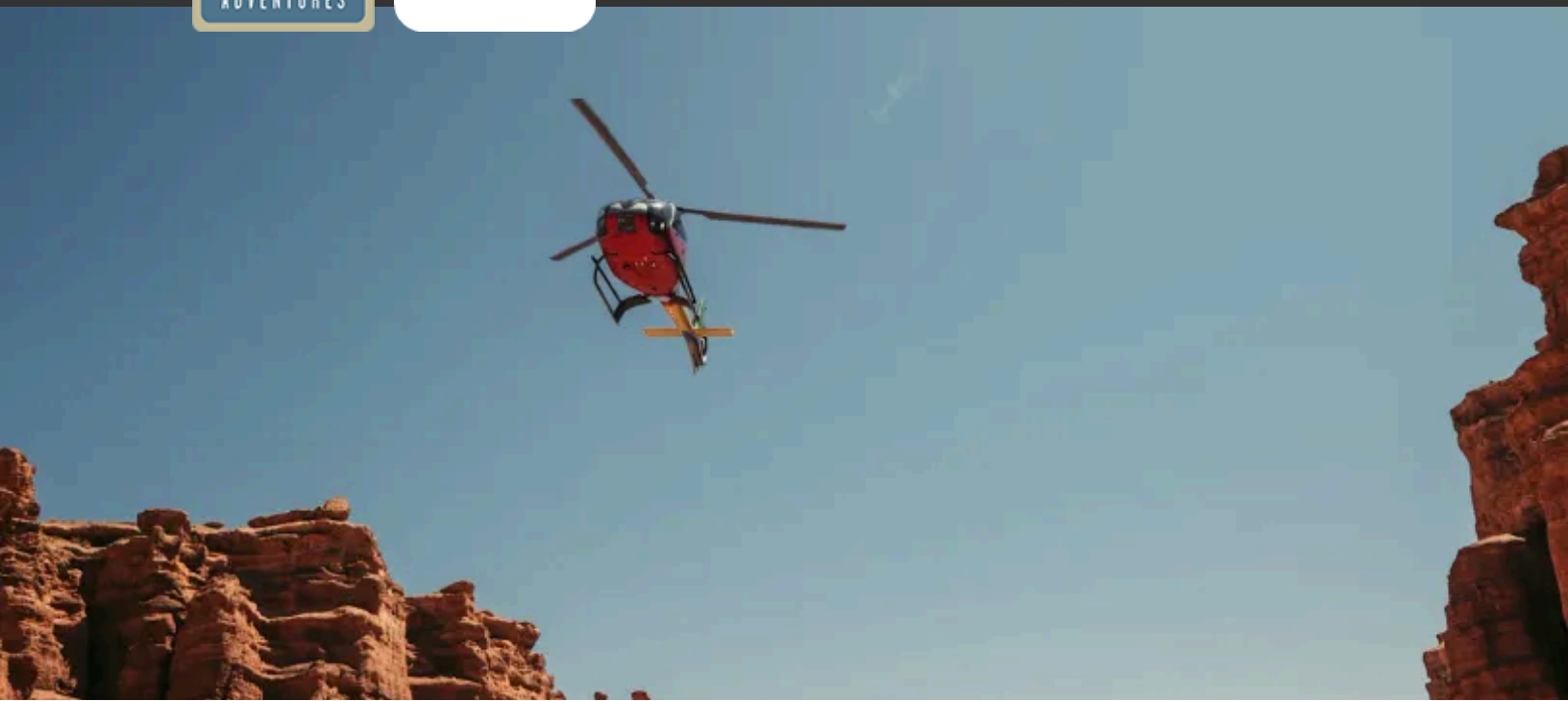
Please note that on Grand Canyon, Bryce & Zion Make It Private departures we require a minimum group size of 7 travelers.

Also, please be aware that your per-person cost on a Make It Private trip will vary depending on the number of travelers in your group and may be as much as 10%-30% higher (ship-based trips may be even higher) than our normal trip cost unless you fill the trip.

This **Make It Private** option is available on nearly every Nat Hab trip for family and friend groups. Call an Adventure Specialist at 800-543-8917 or look for the "Make It Private" icon in the **pricing section** of a trip online at nathab.com to see prices based on your specific group size.



Discovering Our Planet Together



Dates & Pricing Summary:

Prices:
From \$6995

Group Size:
Limited to 13 Travelers

Physical Requirements:
Moderate

Grand Canyon, Bryce & Zion Dates, Pricing & Info

Iconic Vistas & Magical Light—Discover the Red Rock Wonders of the American Southwest

2025 Departures

Departure	Return	Notes
May 26, 2025	Jun 2, 2025	Habitat Club Pricing Available
Jun 4, 2025	Jun 11, 2025	
Jun 13, 2025	Jun 20, 2025	
Sep 10, 2025	Sep 17, 2025	
Sep 19, 2025	Sep 26, 2025	
Oct 7, 2025	Oct 14, 2025	

2026 Departures

Departure	Return	Notes
May 20, 2026	May 27, 2026	
May 29, 2026	Jun 5, 2026	
Jun 7, 2026	Jun 14, 2026	



Discovering Our Planet Together

Departure	Return	Notes
Jun 16, 2026	Jun 23, 2026	
Sep 11, 2026	Sep 18, 2026	
Sep 20, 2026	Sep 27, 2026	
Oct 7, 2026	Oct 14, 2026	



Discovering Our Planet Together

Pricing

2025 Prices

- **Trip Price**
\$6995 - \$7395

Single Occupancy: For a single room add \$1795. **Click here** to learn how you can avoid the single supplement.

Deposit: \$500 per person

Trip prices are per person based on double occupancy and are given in U.S. dollars.

Please read our Payment & Refund Policy here.



2026 Prices

Mouse over or tap dates above to view prices for specific departure dates.

- **Trip Price**
\$6995 to \$7395

Single Occupancy: For a single room add \$1795. **Click here** to learn how you can avoid the single supplement.

Deposit: \$500 per person

Trip prices are per person based on double occupancy and are given in U.S. dollars. **Please read our Payment & Refund Policy here.**

Included

Accommodations, services of Nat Hab's professional Expedition Leader(s) and local staff, scenic helicopter ride over Bryce Canyon, van transportation, all meals from dinner on Day 1 through breakfast on final day, some gratuities, airport transfers on Day 1 and final day, all activities and entrance fees, all taxes, permits and service fees.

Not Included

Travel to and from the start and end point of your trip, alcoholic beverages, some gratuities, passport and visa fees (if any), optional activities, items of a personal nature (phone calls, laundry and internet, etc.), airline baggage fees, airport and departure taxes (if any), optional travel protection and medical evacuation insurance.



Physical Requirements

Easy to Moderate

This adventure does not require a high degree of physical fitness. However, in order to participate, travelers should be able to walk at least two miles unassisted over uneven terrain and inclines, with some altitude gain, and at altitudes up to 9,115 feet above sea level. Most of the trip takes place in an arid desert environment, and the sun can often be intense. Our days generally start quite early and are very full with activities, including a few long drives. While travelers are not required to participate in all activities, should you opt out of the day's scheduled activities, we cannot always guarantee that alternatives will be available.

On custom or private departures with smaller groups, our ability to accommodate varying levels of physical abilities or interests is limited, since these trips are staffed with a single Expedition Leader who may be assisted, pending availability, by local guides.

Important Information About This Trip

This trip offers our guests a chance to encounter a side of the American Southwest that most casual tourists miss. The main goal of our seasoned Expedition Leaders is to get our travelers to less-visited areas away from heavy crowds in order to experience the wildlife and natural grandeur of the canyonlands in the most secluded manner possible. Specific dates cannot be booked with the national parks until August (for the following year). Trip dates listed are likely to change slightly and will be confirmed at that time. Depending upon availability, itineraries may run in a different order.

Getting There & Getting Home

We recommend that you arrive to St. George, Utah, by 5 pm on Day 1 in order to join your group orientation at 6 pm. If you are departing out of St. George, Utah, you are free to depart after 12:30 pm on the final day and will be transferred to the airport. If you are traveling to Las Vegas via shuttle, you are free to depart on the shuttle any time after 12 pm and will be transferred to the shuttle station. We recommend booking flights out of Las Vegas for 3 pm or later, depending on your shuttle departure time.



Natural Habitat & WWF: Discovering Our Planet Together

Natural Habitat Adventures • PO Box 3065 • Boulder, CO USA 80307

USA & Canada: 800-543-8917 • International: 303-449-3711

© 2025 Natural Habitat Adventures

WWF's membership travel program is operated by Natural Habitat Adventures (Nat Hab). To date, Nat Hab has provided more than \$6 million in support of WWF's mission and will continue to give 1% of gross sales plus \$175,000 annually through 2028. WWF® and ©1986 Panda Symbol are owned by WWF. All rights reserved.