



Discovering Our Planet Together



Fat Bears of Brooks Falls Photo Expedition

A Fall Photography Extravaganza in Katmai with Alaska's Biggest Brown Bears



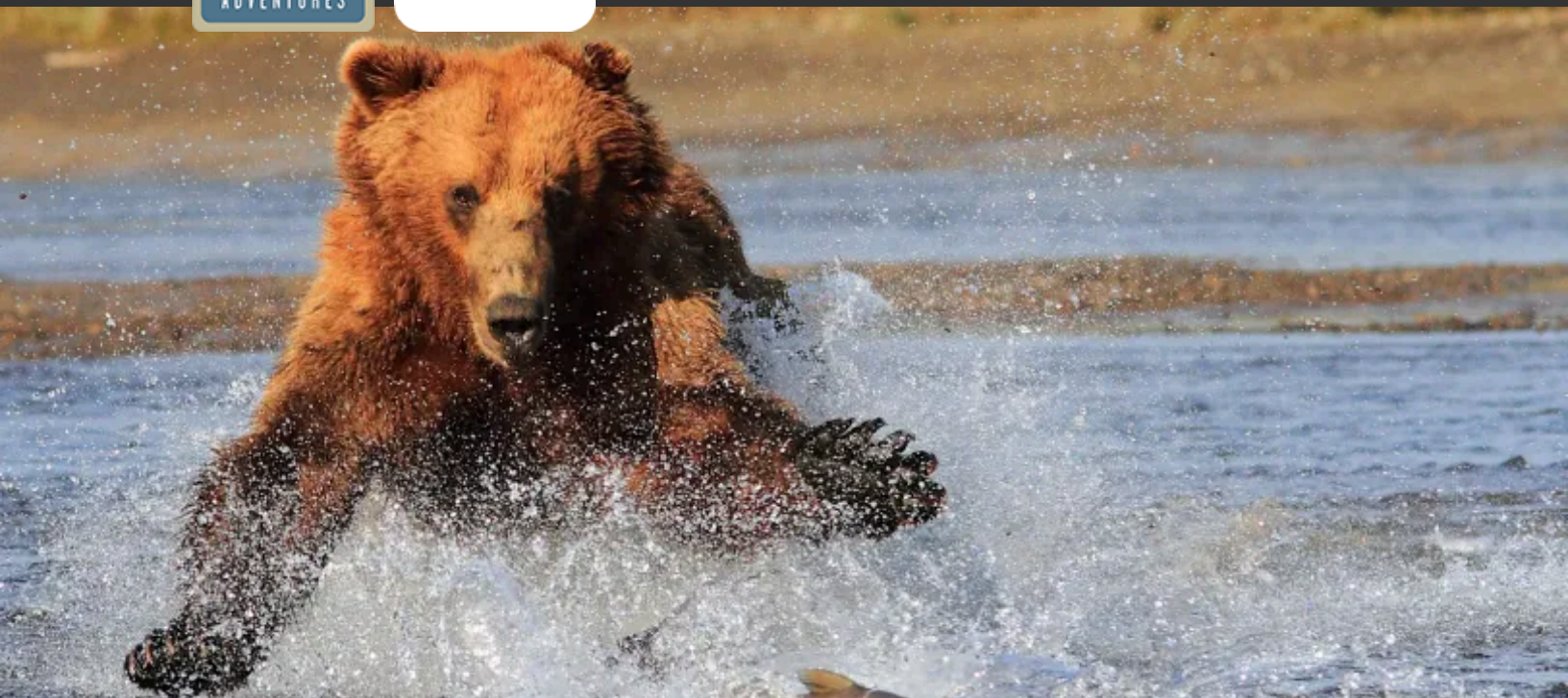
Discovering Our Planet Together

Table of Contents:

Trip Overview	3
Trip Itinerary	4
Trip Accommodations	7
What Makes Nat Hab Different?	8
Make It Private	10
Dates & Pricing Information	11
Trip Extensions	16



Discovering Our Planet Together



Trip Details:

Days

6 Days / Sep & Oct

Price

From \$10895
(+Air)

Physical

Requirements
Moderate

Fat Bears of Brooks Falls Photo Expedition

A Fall Photography Extravaganza in Katmai with Alaska's Biggest Brown Bears

Katmai National Park's annual "Fat Bear Week" has made global celebrities of its most renowned residents—and you can join us here to photograph Alaska's burliest bears for yourself! After Brooks Lodge closes for the season and crowds have disappeared, dozens of bears still congregate in the Brooks River system, indulging in a final round of gluttony before settling in for a long winter's rest. Fly each morning by private floatplane from our lodge in King Salmon to spend unhurried days in some of the world's most stunning bear habitat around Brooks Camp. Compose thrilling images of tawny bruins against a rich autumn palette of changing foliage, golden light, and perhaps the season's first snow dusting the mountains. On foot and by raft, navigate the winding river system in search of exhilarating close-ups of playful cubs and their mothers, giant males, and plucky subadults who are sated and relaxed, on an epic photo expedition you won't find anywhere else!

Trip Highlights

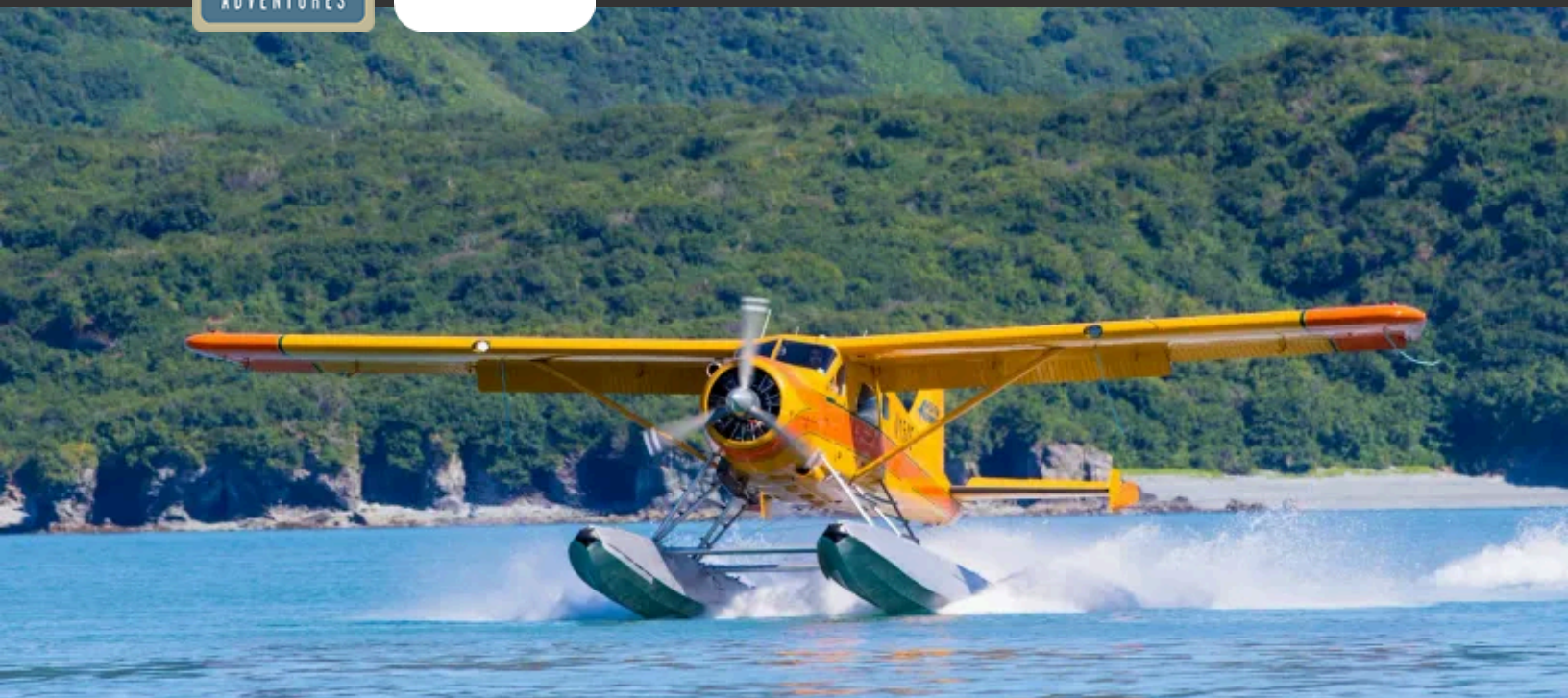
On foot and by raft, spend full, unhurried days photographing Alaskan brown bears at their biggest, as they gorge on the last of the annual salmon run

When people are few and bears have packed on the pounds to become more photogenic than ever, our private chartered floatplane lets us follow them at will!

Our Expedition Leader is not only a talented wildlife photographer but a career naturalist and bear expert whose knowledge enhances your chances for incredible shots



Discovering Our Planet Together



Itinerary At A Glance

Day 1

Anchorage, Alaska

Day 2

Anchorage / King Salmon / Bear Photography

Days 3 & 4

Photographing the Famous Fat Bears of Katmai National Park

Day 5

Bear Photography / King Salmon / Anchorage

Day 6

Anchorage / Depart

Fat Bears of Brooks Falls Photo Expedition Itinerary

A Fall Photography Extravaganza in Katmai with Alaska's Biggest Brown Bears

Day 1: Anchorage, Alaska

Our brown bear photography adventure begins in Anchorage. Located at the head of Cook Inlet, Alaska's largest city is home to half the state's residents plus some 1,500 moose, while the ocean at its doorstep is the domain of all five species of Pacific salmon and an endangered population of endemic beluga whales. Wedged between wilderness areas and within sight of the Chugach, Kenai and Talkeetna mountain ranges, Anchorage enjoys both urban culture and access to outdoor adventure. You're met on arrival at the airport and transferred to our hotel, with time to relax before meeting your Expedition Leader and fellow photographers at a welcome dinner this evening.





Day 2: Anchorage / King Salmon / Bear Photography

Fly southwest from Anchorage to King Salmon, an isolated hamlet at the head of the Alaska Peninsula that is the gateway to Bristol Bay and Katmai National Park. We make the short transfer to the float plane dock for our 20-minute private flight to the Brooks River area, where famous Brooks Lodge is closed for season, significantly lessening crowds at this popular bear-viewing location. Once we touch down, we stop for a safety talk with local rangers who share the proper protocol for behavior in close proximity to brown bears. Bears are usually abundant in the area this time of year, spending the fall fattening up on salmon that remain along the Brooks and Naknek rivers. While they won't be fishing in famous Brooks Falls this time of year, they linger for the end-of-the-season feast where the rivers meet Naknek Lake.

Alaska's autumn light is dramatic with the sun hanging low in the southern sky. A golden glow may linger on the landscape as cottonwood and birch leaves turn yellow before succumbing to frost. It's an irresistible setting for photographing these enormous coastal brown bears. By late September, bears have consumed so much salmon that their weight is up as much as 40% since August, and they sport thick, luxuriant coats in preparation for winter.

Photographing bears in the field is a rustic backcountry experience during a season of changing weather, with spare facilities that include only off-season outhouses at Brooks Camp—but the rewards outweigh any discomfort! After an afternoon of tracking bears in the elements, return by floatplane to our exclusive wilderness lodge retreat on the Naknek River, a tidal estuary with legendary salmon runs and trophy rainbow trout. A small family-managed outpost in the bush, King Salmon Lodge is our comfortable base camp for daily bear photography expeditions. We settle in to our cozy rooms, then enjoy an excellent meal featuring local Alaskan specialties. Once darkness descends, keep an eye out for a possible sighting of the northern lights and the chance for some stunning aurora photography.



Days 3 & 4: Photographing the Famous Fat Bears of Katmai National Park

Prepared for unpredictable fall weather that can often be chilly and wet, we follow the bears during full days along the Brooks and Naknek rivers. Their food supply is prolific, with fish still plentiful following summer's salmon runs that moved from Bristol Bay, the world's largest fishery, into the Naknek River, Naknek Lake and beyond. Chance encounters with snow or one last silver salmon run are possible at this time of year—both of which optimize opportunities for extraordinary photographs.

A highlight of our visit is a chance to see the famous ursine competitors who will be the stars of the Katmai Conservancy's annual Fat Bear Week contest. This popular mid-October event offers the public a chance to "weigh in" by voting online for which brown bear best exemplifies the heft that sets it apart from the rest. As the bears bulk up for their long winter hibernation, they pack on the pounds during a final salmon fling in the Brooks River (which we are witness to), and our Expedition Leaders are typically familiar with "who's who." Once you get home, you can vote for some of the very bears you've likely had a chance to see in person during our photo expedition.

Since we taxi in and out of the Brooks River area in our chartered floatplane, we have flexibility to go to where the bears are! On foot and by raft, we navigate the winding river system to capture close ups of these massive bears. Via aerial flightseeing, we survey different natural areas each day, getting a dramatic vista from on high of the vast Katmai wilderness. Each evening, return to our well-appointed haven of comfort at King Salmon Lodge, surrounded by forest that's home to bald eagles, moose, bears and other wildlife. Relax on leather sofas in front of the river rock fireplace to ward off fall's chill, and enjoy time after dinner for photo editing and photography lessons, bear lectures, ecology talks and more.

Day 5: Bear Photography / King Salmon / Anchorage

After a last round of photographing bears in Katmai National Park and some elevated exploration via our private air taxi this morning, we fly back to King Salmon, then on to Anchorage. Tonight, our Expedition Leader hosts a farewell dinner to celebrate our grand autumn adventure among the bears.

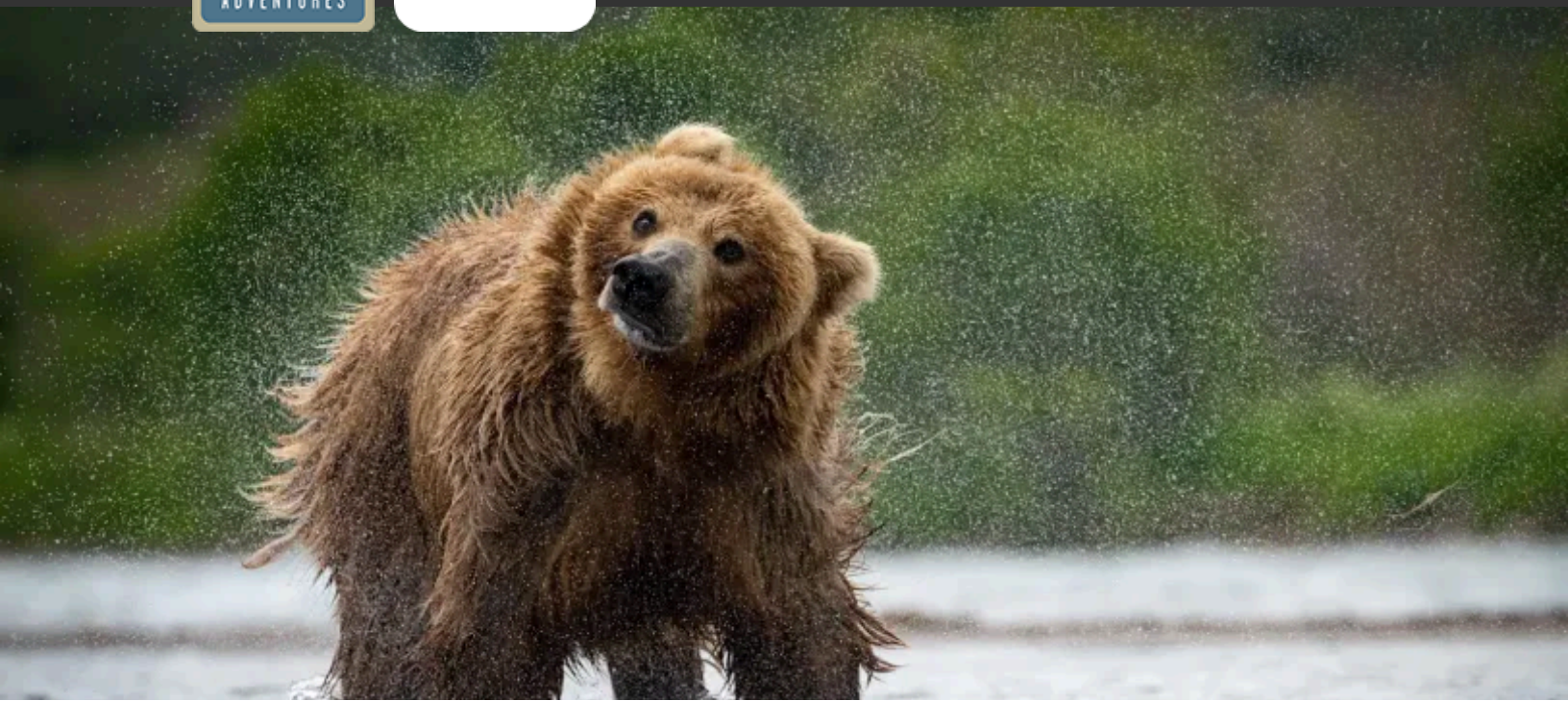
Day 6: Anchorage / Depart

Our Alaska bear expedition comes to a close today as we transfer to the airport for onward flights.

Click [here](#) to view the seasonal variations of grizzly bear activity.



Discovering Our Planet Together



Accommodation Details:

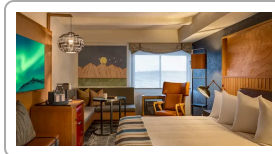
The Wildbirch Hotel

King Salmon Lodge

For detailed descriptions, visit nathab.com/alaska-northern-adventures/brooks-falls-bears/accommodations

Fat Bears of Brooks Falls Photo Expedition Accommodations

A Fall Photography Extravaganza in Katmai with Alaska's Biggest Brown Bears



The Wildbirch Hotel

Newly redesigned and located in downtown Anchorage, this hotel features spacious guest rooms, a welcoming lobby with local art and large fireplace, and an on-site craft brewery.



King Salmon Lodge

This wilderness lodge offers rustic luxury on the Naknek River, with log and stone accents, a cozy fireplace and Alaskan meals—just a short floatplane ride to world-famous bear viewing in Katmai National Park.



A Different View on the Bears of Brooks...Only with Nat Hab!

Nothing evokes Alaska like bears and salmon. And the brown bears of the Brooks River, devouring the last salmon before winter sets in, are among the planet's most iconic wildlife photography subjects. While you won't see many fishing in Brooks Falls this time of year, they're still all over the area fattening up for winter on the salmon that remain—and this exclusive bear photography expedition puts you right in the midst of them, after standard tourist facilities are closed for the season.

1

More Bears, Few People—a Rare Off-Season Opportunity

We take you to the heart of the action near Brooks Lodge, but we arrive after public facilities have closed. We're likely to encounter very few other visitors, even though the bear population remains substantial, as they continue to frequent the river to feast on abundant salmon once Brooks Lodge closes for the season. Though it could be cold and rainy, we might also get low-angle autumn sunlight, lingering fall colors and possible snow dustings. With the bears at their heaviest weight, it's a photographer's dream.

2

An Exclusive Photo-Focused Itinerary

Our itinerary is focused on bear photography from start to finish. On this 6-day trip, we spend four days in the field observing Alaskan brown bears when they are at their heaviest (and most camera-worthy) weight. Our private chartered floatplane is on call to make sure we get close-up views of bears daily, wherever they may be. Even unpredictable late-season weather makes this a coveted adventure, since the prospect of frost or snow can provide a beautiful backdrop.

3

Our Chartered Floatplane Ensures Proximity to the Bears

The special appeal of this trip is that if the bears are not hanging out directly around the Brooks River on any given day, our chartered floatplane will deliver us to where they are. It's like a private "air taxi" that gets us wherever we want to go, maximizing time with the bears, plus photo opportunities from the air on our daily round-trips to from King Salmon to Katmai National Park.

4

On Foot & By Raft, Get Closest to Bears

While we'll have the thrill of watching bears on foot, we also have access to a sturdy raft that lets us float the river system to get even closer to where they are, maximizing our opportunities for exciting shots.



Discovering Our Planet Together

5

Stay at a Comfortable Wilderness Base Lodge

While conditions in the field are rugged, bush-style luxury awaits as we return to King Salmon Lodge each night. A remote retreat near the fly-in hamlet of King Salmon on the edge of Katmai National Park, this warm, well-appointed family-run lodge provides hearty meals, a roaring fire, and a riverside deck that restores you for another day in the backcountry. It's the perfect respite after a day of bushwhacking in the elements as we go in search of bears to photograph.

6

Outstanding Naturalist Guides Who Are Photography Pros

Our Expedition Leaders are outstanding photographers *pros and* bear experts—the combination you need to get coveted shots. Among Alaska's top naturalist guides, they are bear specialists, too, and their knowledge of bear behavior is key to getting you set up for the best shots. Highly accomplished wildlife photographers, they are gifted at sharing tips with photographer peers. We take pride in employing the most qualified, dedicated and passionate natural history guides, who also receive additional training and resources from WWF scientists. Our Expedition Leaders regale guests with their in-depth knowledge while ensuring safety and comfort in every respect. **See Expedition Leader bios** and traveler comments regarding the quality of our leaders.

7

Our Quality-Value Guarantee Ensures Your Outstanding Alaska Bear Photo Adventure

Natural Habitat Adventures offers an exclusive guarantee, which clearly states that we will meet the lofty expectations established in our promotional materials. To our knowledge, this is the most ambitious guarantee made by any adventure travel company.

8

Feel Good About Your Carbon-Neutral Journey

We care deeply about our planet, as we know you do. When you travel with us, the carbon emissions from your trip are 100% offset—including your round-trip flights from home. Natural Habitat Adventures has been the world's first carbon-neutral travel company since 2007.

9

Natural Habitat Adventures is WWF's Travel Partner

Because of our commitment to environmentally friendly travel, as well as the exceptional quality of our adventures. World Wildlife Fund—the planet's leading environmental conservation organization—has named Natural Habitat Adventures as its worldwide travel partner, a designation that makes us exceedingly proud!



Make It Private with Your Family or Friends

Travel privately, exclusively with your immediate family, multi-generational family or group of friends. And when you choose a private departure, you're assured the most exclusive and authentic *Fat Bears of Brooks Falls Photo Expedition* on offer. Request your private departure by completing the form below.

Please note that on Fat Bear Photo Expedition Make It Private departures we require a minimum group size of 5 travelers.

Also, please be aware that your per-person cost on a Make It Private trip will vary depending on the number of travelers in your group and may be as much as 10%-30% higher (ship-based trips may be even higher) than our normal trip cost unless you fill the trip.

This **Make It Private** option is available on nearly every Nat Hab trip for family and friend groups. Call an Adventure Specialist at 800-543-8917 or look for the "Make It Private" icon in the **pricing section** of a trip online at nathab.com to see prices based on your specific group size.



Discovering Our Planet Together



Dates & Pricing Summary:

Prices:
From \$10895
(+Air)

Group Size:
Limited to 10
Travelers

Physical Requirements:
Moderate

Fat Bears of Brooks Falls Photo Expedition Dates, Pricing & Info

A Fall Photography Extravaganza in Katmai with Alaska's Biggest Brown Bears

2025 Departures

Departure	Return	Notes
Sep 17, 2025	Sep 22, 2025	
Sep 20, 2025	Sep 25, 2025	
Sep 23, 2025	Sep 28, 2025	
Sep 26, 2025	Oct 1, 2025	Habitat Club Pricing Available
Sep 29, 2025	Oct 4, 2025	
Oct 2, 2025	Oct 7, 2025	
Oct 5, 2025	Oct 10, 2025	

2026 Departures



Discovering Our Planet Together

Dates & Pricing Summary:

Prices:
From \$10895
(+Air)

Group Size:
Limited to 10
Travelers

Physical Requirements:
Moderate

Departure	Return	Notes
Sep 17, 2026	Sep 22, 2026	
Sep 20, 2026	Sep 25, 2026	
Sep 23, 2026	Sep 28, 2026	
Sep 26, 2026	Oct 1, 2026	Habitat Club Pricing Available
Sep 29, 2026	Oct 4, 2026	
Oct 2, 2026	Oct 7, 2026	
Oct 5, 2026	Oct 10, 2026	

2027 Departures

Departure	Return	Notes
Sep 17, 2027	Sep 22, 2027	
Sep 20, 2027	Sep 25, 2027	
Sep 23, 2027	Sep 28, 2027	
Sep 26, 2027	Oct 1, 2027	Habitat Club Pricing Available
Sep 29, 2027	Oct 4, 2027	
Oct 2, 2027	Oct 7, 2027	
Oct 5, 2027	Oct 10, 2027	



Discovering Our Planet Together

Pricing

2025 Prices

➤ Trip Price

\$10895 (+internal air)



Internal Air Cost: \$2587 per person (this will be listed separately on our invoicing).

Single Occupancy: For a single room add \$1695. **Click here** to learn how you can avoid the single supplement.

Deposit: \$500 per person

Trip prices are per person based on double occupancy and are given in U.S. dollars.

Please read our Payment & Refund Policy here.

2026 Prices

We're still in the process of confirming 2026 pricing. Please contact an Adventure Specialist for more details: 800-543-8917.

2027 Prices

We're still in the process of confirming 2027 pricing. Please contact an Adventure Specialist for more details: 800-543-8917.

Included

- **Trip price includes:** Accommodations, services of Nat Hab's professional Expedition Leader(s) plus local guides and lodge staff, all meals from dinner on Day 1 through breakfast on final day, some gratuities, airport transfers on Day 1 and final day, all rafts, all activities and entrance fees, all taxes, permits and service fees. If necessary due to weather or high water levels, Nat Hab will provide chest waders and boots, as well as waterproof gloves for use during bear-viewing excursions. If you require an especially large or small size, please let us know when you are booking.
- **Internal air cost includes:** Flights from Anchorage to King Salmon and all floatplane flights within the itinerary (this will be listed separately on our invoicing).

Not Included

Travel to and from the start and end point of your trip, alcoholic beverages at King Salmon Lodge, some gratuities, passport and visa fees (if any), optional activities, items of a personal nature (phone calls, laundry and internet, etc.), airline baggage fees, airport and departure taxes (if any), optional travel protection and medical evacuation insurance.



Physical Requirements

Moderate

This expedition to photograph bears at the end of the season in the Brooks Falls region involves terrain that can be difficult to navigate, requiring travelers to be confident on their feet in varying and challenging conditions. A full day of bear viewing typically involves walking up to six miles on multiple outings to daily bear-viewing locations. When conditions are dry and water levels in the river are low, we will wear chest waders to wade up the Brooks River to view bears. When water levels are higher, the bears will typically be at the falls, and walking to view them will be less taxing. At any time, however, conditions can include rough, uneven terrain, bushwhacking through heavy brush, walking in shallow water, and walking through mud—while carrying all of your own gear, including camera equipment. Weather is highly changeable at this time of year and may be inclement, with rain or even snow possible. You must also have sufficient balance and strength to climb into and out of floatplanes and the raft we use to observe bears from the water.

In order to maximize bear photography opportunities, we will spend long days in the field without access to shelter. Once at the bear-viewing site, physical activity is quite limited. We may spend several hours sitting on the ground in essentially one spot with little movement. For safety reasons, it is not possible to split the group: individuals may not opt to return to the lodge early or to stay in one place while the rest of the group moves on. Travelers must be of sound health and able to maintain a positive attitude in a wild, remote and unpredictable setting.

Important Information About This Trip

This adventure is very different from the typical Alaska tour where motorcoaches move long lines of cruise ship clients to crowded destinations. The focus here is specifically on brown bears—the world's largest coastal grizzlies—which, naturally, must be treated with caution and respect. You will always be in the company of our expert naturalist guides who will coach you on how to comport yourself safely in bear territory, and who will offer photography techniques that yield the best shots, providing insight and wisdom on bear behavior that is critical to anticipating and capturing the action. Please note that weather can be unpredictable during this time of year and there is always a possibility of delayed or cancelled flights. With this in mind, we have created an itinerary that includes multiple days of bear viewing.

Important note about restroom facilities: At this time of year, Brooks Lodge has closed for the season, and there are no flush toilets available—only basic outhouses near Brooks Camp will be available during the day while we are observing bears in the field.

Mandatory Insurance

Since the areas we travel to are remote and wild (that's why we go there!), we require that all guests have, at minimum, medical evacuation insurance for this program. This is for the safety of all guests. We require that your chosen independent insurance plan includes at least \$250,000 in medical evacuation coverage.

To protect your investment and to provide peace of mind while you travel, we also strongly recommend purchasing comprehensive travel insurance. Plans may cover everything from medical treatment to trip cancellations and delays and lost luggage. Please contact our office if you would like more information about the medical evacuation and comprehensive travel insurance policies we offer by calling 800-543-8917.



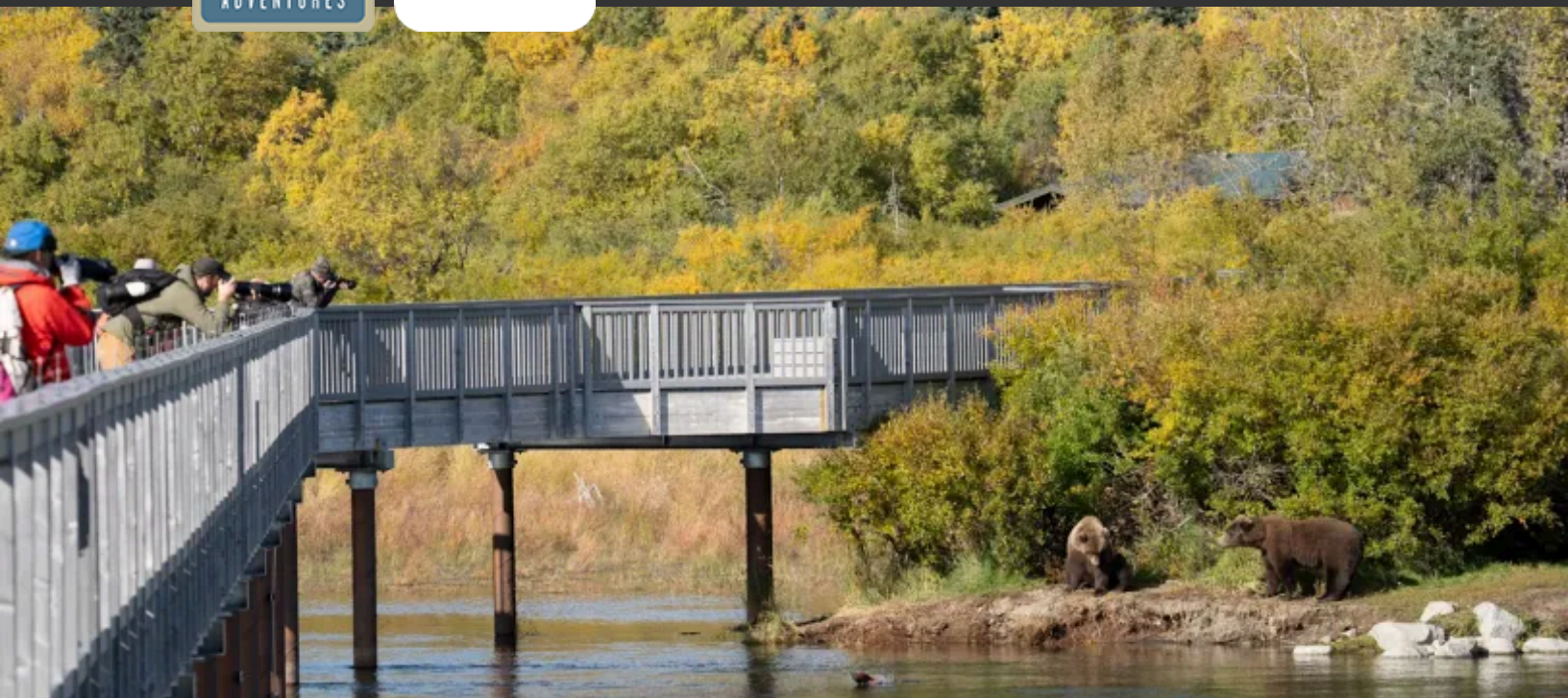
Discovering Our Planet Together

Getting There & Getting Home

This trip begins and ends in Anchorage, Alaska. Arrive in Anchorage by 4 pm on Day 1 in order to attend a 6 pm orientation with our Expedition Leader followed by a welcome dinner. You are free to depart Anchorage at any time on the final day.



Discovering Our Planet Together

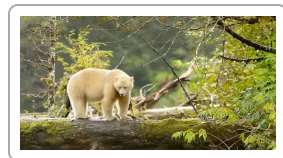


Extension Details:

Spirit Bears, Humpbacks &
Wildlife of BC
\$11795

Fat Bears of Brooks Falls Photo Expedition Extensions

A Fall Photography Extravaganza in Katmai with Alaska's Biggest Brown Bears



Spirit Bears, Humpbacks & Wildlife of BC

Discover British Columbia at its wildest, in search of the elusive white Spirit Bear in the remote valleys of western Canada's Coast Range. Offshore, scout for humpback whales and orcas in emerald fjords.

\$11795 (+air)



Natural Habitat & WWF: Discovering Our Planet Together

Natural Habitat Adventures • PO Box 3065 • Boulder, CO USA 80307

USA & Canada: 800-543-8917 • International: 303-449-3711

© 2025 Natural Habitat Adventures

WWF's membership travel program is operated by Natural Habitat Adventures (Nat Hab). To date, Nat Hab has provided more than \$6 million in support of WWF's mission and will continue to give 1% of gross sales plus \$175,000 annually through 2028. WWF® and ©1986 Panda Symbol are owned by WWF. All rights reserved.