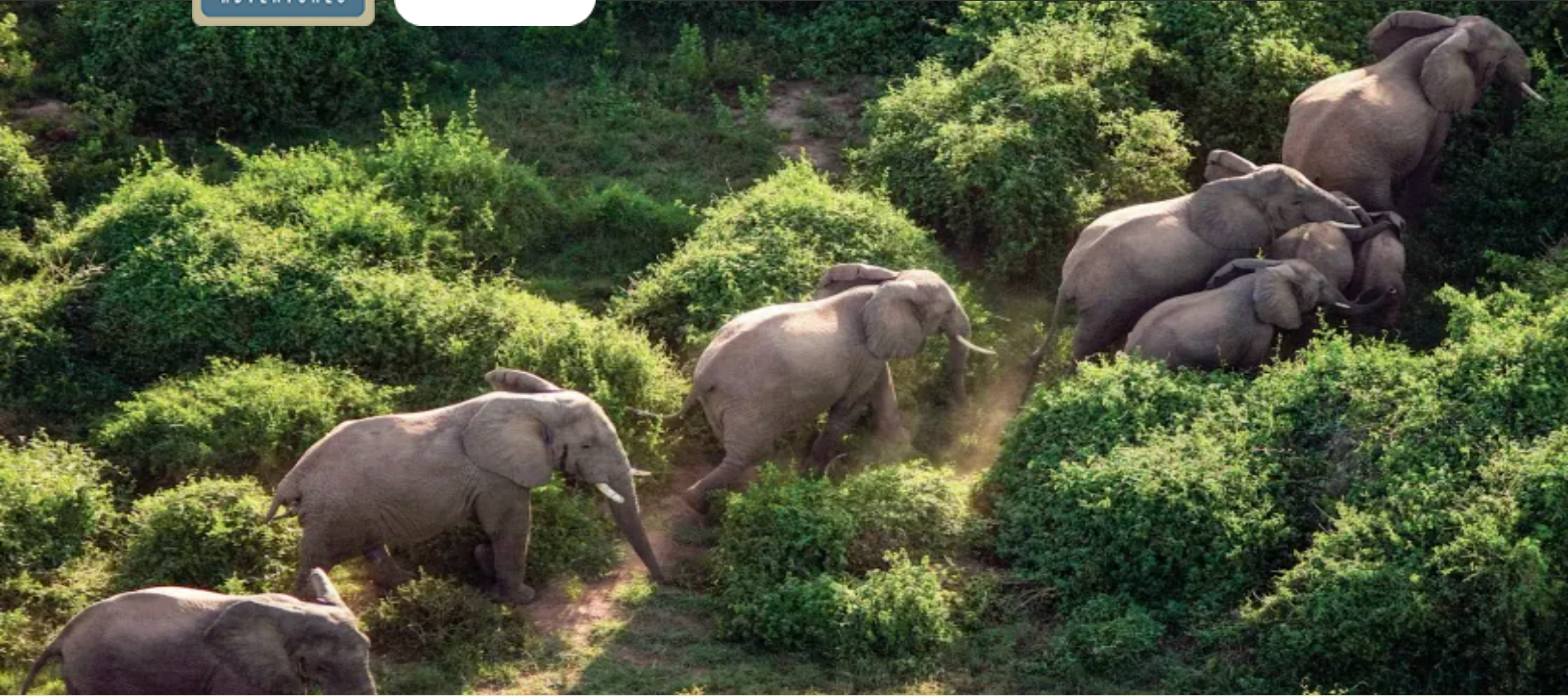




Discovering Our Planet Together



Botswana Green Season Photo Expedition

Explore Desert & Delta in the Kalahari & Okavango, with Dramatic Skies & Baby Animals

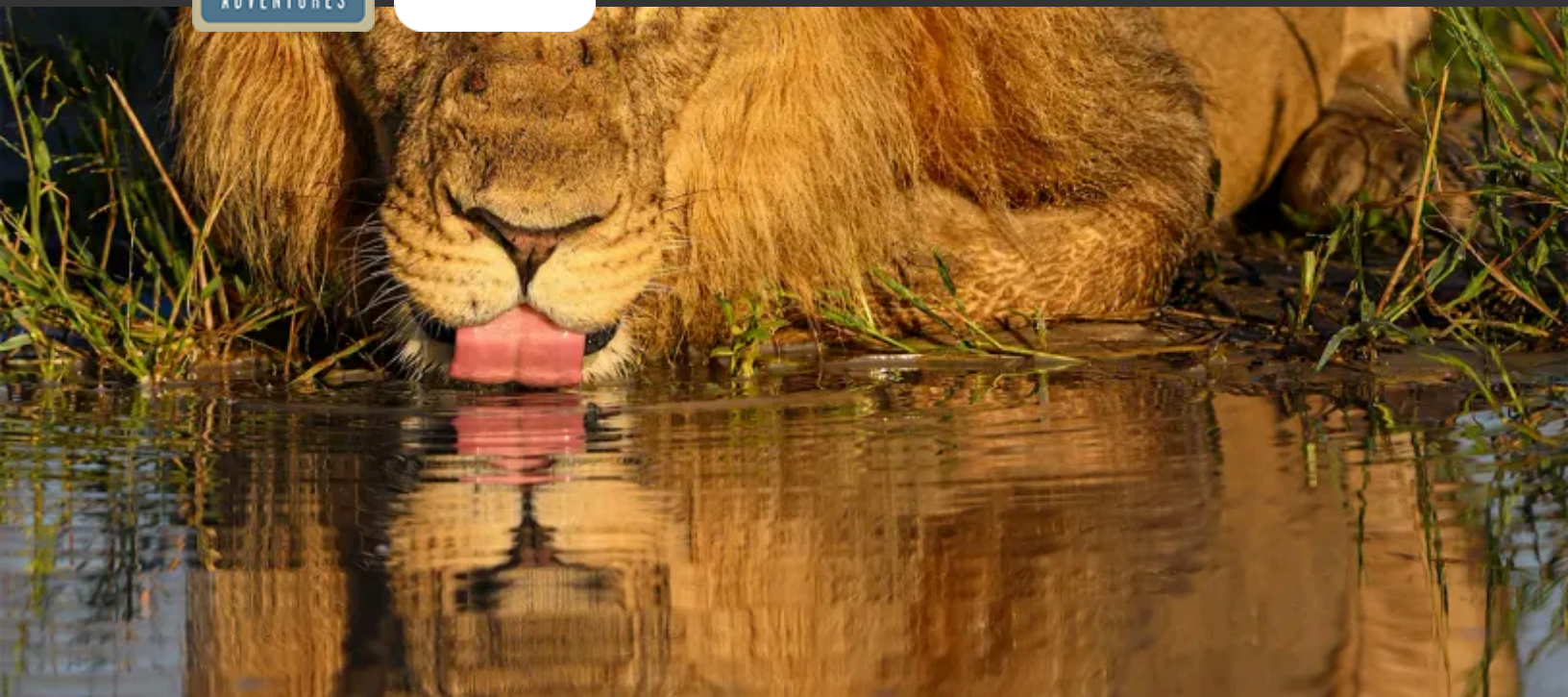


Table of Contents:

Trip Overview	3
Trip Itinerary	4
Trip Accommodations	8
What Makes Nat Hab Different?	10
Make It Private	13
Dates & Pricing Information	14
Trip Extensions	19



Discovering Our Planet Together



Trip Details:

Days
12 Days / Nov–Mar

Price
From \$17995 (+Air)

Physical Requirements
Easy to Moderate

Botswana Green Season Photo Expedition

Explore Desert & Delta in the Kalahari & Okavango, with Dramatic Skies & Baby Animals

Botswana's shoulder season holds peak prospects for nature photographers. When light seasonal rains bring moisture to the arid Kalahari, landscapes are transformed with color and drama. Life bursts forth, with fresh grass attracting migrating herds and new births filling the plains. Clouds mass in charcoal and silver and create stunning orange sunsets. From January to April, photograph Africa's second-largest migration, with 50,000 zebra and wildebeest passing through the Kalahari. Meet the San people, the earliest hunter-gatherers in southern Africa, whose culture dates back more than 30,000 years. In the Okavango Delta, water levels are typically low during this season, and the drier region of the delta offers superb wildlife photography, with stable populations of lion, leopard, wild dog and much more. Highlights include a doors-off helicopter flight over the Okavango Delta, a visit with a predator researcher at Gomoti Camp, private stays at intimate luxury camps, and personal photography coaching from your Expedition Leader who is one of Africa's top photo safari guides!

Trip Highlights

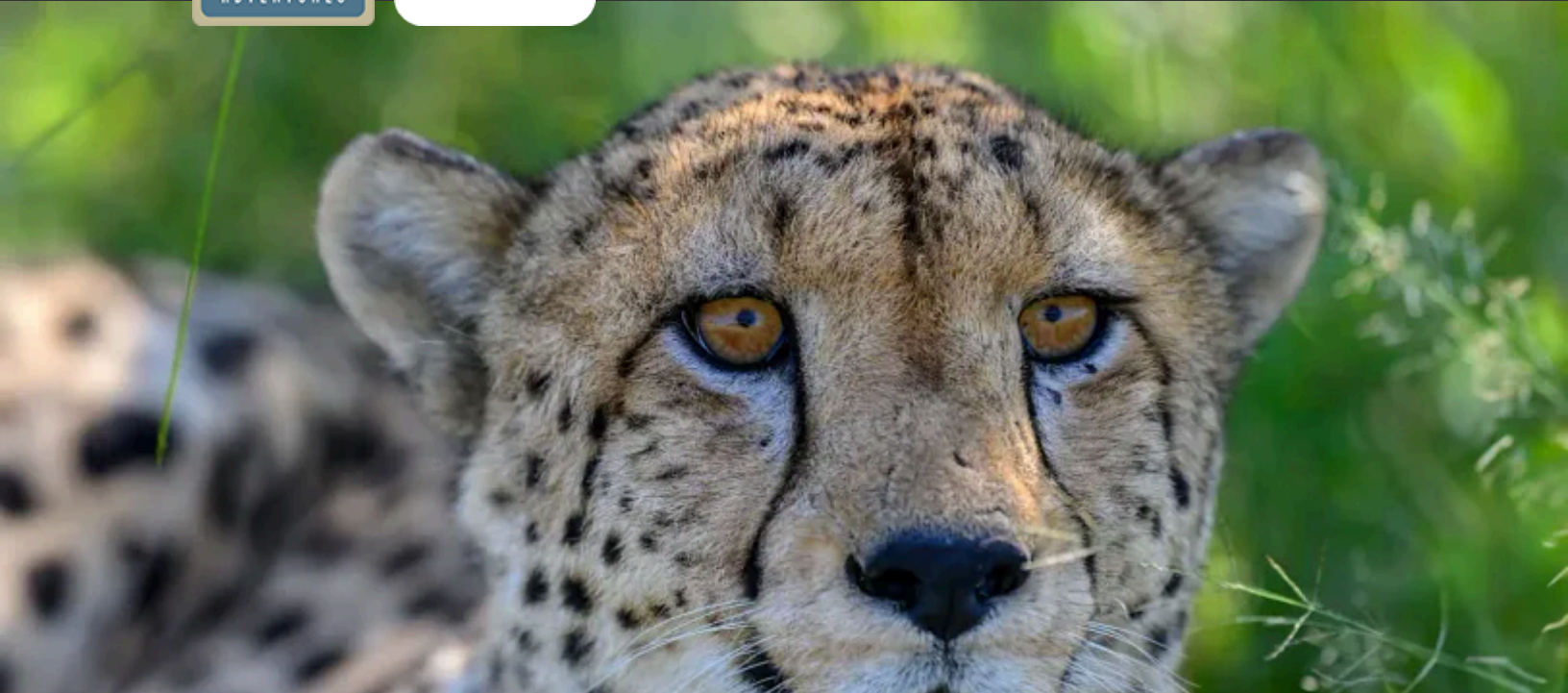
Amid Botswana's prolific big game, you'll have matchless photo opportunities, with just four guests per safari vehicle and a superb naturalist-photographer guide

Fly over the Okavango Delta—with an open side view!—to capture spectacular images and video of the verdant watery maze and wildlife on the move

Stand on the rim of Victoria Falls during its mightiest seasonal flow, producing enough spray to create a rain forest microclimate on the edge



Discovering Our Planet Together



Itinerary At A Glance

- Day 1**
Livingstone, Zambia—Zambezi River
- Day 2**
Mosi-oa-Tunya National Park—Victoria Falls / Village Visit / Rhino Walk
- Day 3**
Chobe National Park, Botswana / Okavango Delta—Santawani Private Concession
- Days 4 & 5**
Okavango Delta—Visit with Predator Researcher
- Days 6 - 8**
Central Okavango—Private Jao Concession / Helicopter Flightseeing
- Days 9 - 11**
Eastern Kalahari—Makgadikgadi Pans
- Day 12**
Maun / Depart

Botswana Green Season Photo Expedition Itinerary

Explore Desert & Delta in the Kalahari & Okavango, with Dramatic Skies & Baby Animals

Day 1: Livingstone, Zambia—Zambezi River

Our Botswana photo tour begins just over the border in Livingstone, Zambia, where our Expedition Leader meets you on arrival at the airport. Transfer to Toka Leya Camp, which enjoys a superb setting on the banks of the mighty Zambezi. Individual chalets face west over the river for expansive sunset views. Keep your camera ready, as we frequently see elephants and hippos on shore. A sunset cruise offers a chance to photograph the river scenery before returning to camp for a welcome dinner.





Day 2: Mosi-oa-Tunya National Park—Victoria Falls / Village Visit / Rhino Walk

Our focus today is Mosi-oa-Tunya National Park with its centerpiece, Victoria Falls, which we explore on a guided walking tour along the rim this morning. The world's most astounding cataract, Victoria Falls spans more than a mile and plummets 350 feet into the Zambezi Gorge below, producing so much spray that the intense moisture has created a rain forest microecosystem on the rim. A network of walkways offers varying viewpoints over the falls, with exciting photography opportunities.

Next, we visit a nearby village to learn about the culture and daily life of the local people. Then, we head farther into the national park to look for white rhinos—our best chance to see them up close. This small but growing population currently numbers 10 individuals including calves. They're carefully managed and protected from poaching by around-the-clock armed guards. Because predators do not live in the park, we approach the rhinos via a short walk through the diverse landscape, a combination of tall riverine forests, woodland and open grasslands. We're likely to see elephants, giraffes, baboons, plentiful birds and zebra. But the true prize is encountering the placid rhinos, endangered icons of the African wild. During the excursion, we follow the rhinos' movements and observe their behavior as we learn about the critical conservation measures striving to bring this population — and the entire species — back from the brink.

Day 3: Chobe National Park, Botswana / Okavango Delta—Santawani Private Concession

Leaving Zambia by road, we reach the Kazungula border on the Chobe River, where Botswana, Zambia, Zimbabwe and Namibia meet. Entering Botswana, our destination is Chobe National Park, known for its enormous elephant herds and stable population of general wildlife species throughout the year. On a private boat cruise on the Chobe River, expect to photograph elephant, hippo, crocodile, and possibly the more elusive puku and Chobe bushbuck. Up to 400 bird species reside in the park at this time of year, and waterbirds abound, especially herons, storks and egrets. Later this afternoon, fly by light aircraft to Gomoti Tented Camp in the community-owned Santawani Concession in the Okavango Delta. This intimate camp, reserved exclusively for our group, offers the utmost in a private, secluded experience of the delta—an optimal base for wildlife photography.



Days 4 & 5: Okavango Delta—Visit with Predator Researcher

Earth's largest inland water system, the Okavango Delta, became UNESCO's 1,000th World Heritage Site in 2014. The Okavango River's headwaters lie in the western highlands of Angola, joining with other rivers in Namibia and Botswana to meet the Kalahari Desert, where a green oasis sprawls amid the sands and dry savanna. With its vast network of channels and wetlands, the delta is home to a profuse collection of wildlife and vegetation. Though some of the region is permanently flooded (or typically has been), the water recedes during the southern summer months, and normally wetter areas of the delta open up for game drives and expansive wildlife photo opportunities. Specific wildlife sightings, while always abundant, will depend on seasonal water levels. Among the many species we may have a chance to photograph are leopard, lion, wild dog, hyena, cheetah, giraffe, elephant, impala, kudu, zebra, wildebeest and buffalo. Wildlife is abundant around camp, and we often see animals wandering through. Birdlife is also outstanding, and we may see ground hornbill, crimson-breasted shrike and yellow morph, among dozens of others.

The diverse range of habitats, plus the year-round lifeline of the Gomoti River, make this region ideal for all-day photography excursions including on traditional 4x4 game drives and night drives. A mix of riverine woodlands, acacia scrub and open floodplains provides ample food for a large array of browsers and grazers, as well as predators. During a private visit with an on-site predator researcher, learn about local studies on wild dog, cheetah and leopard. After each day's adventures, retreat to the comfort of our camp, where paraffin hurricane lanterns and the glow of a campfire lend romantic ambience.

Days 6 - 8: Central Okavango—Private Jao Concession / Helicopter Flightseeing

Fly this afternoon to the center of the Okavango Delta for a three-night stay on the private Jao Concession, marked by palm-studded islands, riverine forest and sprawling floodplains. Our secluded camp is set within a productive wetland that nurtures prolific wildlife, which we'll photograph in thrilling proximity on 4x4 drives, guided walks (safety permitting), boat rides and poled mokoro excursions if water levels permit. The mokoro is the traditional dugout canoe of the delta, and Okavango-born polers reveal intimate secrets of delta life as we spot tiny frogs and colorful waterbirds. (Please note that water levels and activities may vary based on actual amounts of annual rainfall).

The Okavango is dramatic big-game country, home to plentiful buffalo, blue wildebeest, giraffe, zebra, bushbuck, tsessebe, water-adapted antelope like red lechwe and the rare sitatunga, and, of course, elephants. And where game thrives, so do predators—keep cameras poised for shots of lion, leopard and hyena on the prowl. In the channels, capture photos of hippos and crocodiles, plus scores of birds in the marshes. Pel's fishing owl is a prize sighting, and we may also spot African and lesser jacanas, slaty egret, African skimmer, wattled crane and malachite kingfisher, to name just a few. A highlight of our time in this region is a 30-minute helicopter flight over the greater Okavango Delta...with doors off for the most spectacular photography opportunities! Back in camp, there's time to review and edit photos from the day's exploits. Later, sleep comes easily under canvas as we're lulled by the soothing sounds of the African night.



Days 9 - 11: Eastern Kalahari—Makgadikgadi Pans

Thrilling photography prospects are in store as we transfer by light aircraft to the eastern side of the 360,000-square-mile Kalahari Desert, offering an aerial view on the stark landscape and roaming wildlife below. Our tented camp rests on the edge of the world's largest salt pan, an oasis of comfort shaded by acacia and palm trees. The Makgadikgadi Pans formed when an ancient lake evaporated thousands of years ago, and these shallow depressions are all that remain of once-enormous Lake Makgadikgadi. Today, this vast expanse of salt glitters in the intense sun, evoking a moonscape. The only visible plant life is a thin layer of blue-green algae, but seasonal rains turn the pans into an important habitat for migrating animals, including wildebeest and one of Africa's largest zebra populations, along with the predators that pursue them, including the famous Kalahari black-maned lions.

Have your camera ready as we look for unusual desert-adapted creatures on private game drives, heading out in search of gemsbok, springbok, red hartebeest, steenbok, plus many small mammals such as honey badger and mongoose, and plentiful birds and reptiles. We'll also interact with a friendly habituated colony of meerkats. The Kalahari is the ancient home of the San people, who have subsisted in these austere environs for more than 30,000 years. Our time includes cultural engagements offering insight into the history and traditions of the clans in the area. Back at camp each night, enjoy some of the best stargazing on the planet.

Day 12: Maun / Depart

Our Botswana photo safari comes to a close today when we depart by air for Maun to connect with onward flights.

Click here to view the seasonal variations of weather and wildlife viewing in Botswana.



Discovering Our Planet Together



Accommodation Details:

Toka Leya

Nat Hab's Gomoti Camp-
Okavango South

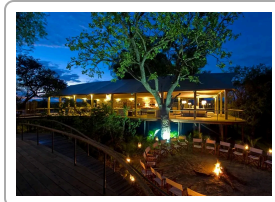
Nat Hab's Pelo Camp-Heart of
the Delta

Camp Kalahari

For detailed descriptions, visit
nathab.com/africa/botswana-kalahari-photo-expedition/accommodations

Botswana Green Season Photo Expedition Accommodations

Explore Desert & Delta in the Kalahari & Okavango, with Dramatic Skies & Baby Animals



Toka Leya

This luxurious camp on the Zambia side overlooks the Zambezi River and its islands, with hippos and crocodiles on view from tents that are raised on stilts and connected by wooden walkways.



Nat Hab's Gomoti Camp-Okavango South

Our private camp, exclusively for our use, has just five canvas tents in an intimate setting evocative of an earlier safari era, illuminated by the vintage glow of paraffin lanterns and a crackling campfire.

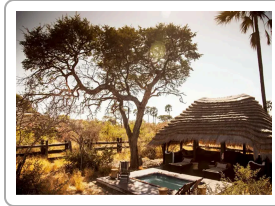


Nat Hab's Pelo Camp-Heart of the Delta

From this seasonal tented camp on the Jao Concession in the heart of the delta, guests experience a watery wilderness immersion with lodging and excursions inside permanently flooded terrain.



Discovering Our Planet Together



Camp Kalahari

Nestled among acacias and Mokolwane palms on Hyena Island at the edge of the vast Makgadikgadi Salt Pans, 10 spacious Meru tents occupy the historic site of storied expeditions.



A Less Common Photo Safari...for More Distinctive Images!

A photography adventure in Botswana's Kalahari Desert and Okavango Delta during the green season is distinctive in its own right. But to do it the way we do it—in a very small group, maximizing seclusion, with close-up wildlife encounters in especially remote areas—takes this photo safari to a whole different level.

1

The Smallest Group—Just 8 Guests Divided Between Two Vehicles

Photo opportunities in nature are enhanced in quieter contexts—that's why we limit this photo safari to just eight guests (divided into two vehicles with four travelers each). This very small group size ensures the most personalized experience possible in secluded locations where other visitors are few.

2

A Diverse Summer Season Itinerary

Our less-conventional itinerary offers an experience of Botswana's prolific wildlife during a season when new life abounds but other travelers do not. We've designed it to showcase a diverse array of habitats for the best range of wildlife photography—including Africa's second-largest migration of zebra and wildebeest from January to April.

3

Private Reserves Facilitate Solitude

In contrast to more heavily visited national parks, we stay in seclusion on Botswana's premier private reserves, including a coveted location next to Makgadikgaki Pans National Park with easy access to all the activities the area has to offer. At this time of year, floodwaters are receding in some areas of the Okavango Delta, opening up vast areas for wildlife viewing on land. In addition to regular daytime game drives, we also do exciting night drives, not allowed in the public parks, in search of nocturnal wildlife.

4

Intimate Luxury Camps

A stand-apart element of this safari is our exceptionally small and secluded camps. Within the privately owned Santawani Concession, Gomoti Camp is ours alone, offering an encounter with the African wilderness evocative of a century ago—which very few safari-goers get to experience.



5

Chartered Flights Maximize Your Time for Photography

We book seats on chartered light aircraft for transfers between safari locations, increasing your time with wildlife and maximizing comfort by eliminating long drives over rough dirt roads. On our Photo Expedition, we include an additional baggage allowance so you can take all your camera gear, too—a real plus when you compare operators and options.

6

Explore from Our New Electric Safari Vehicle

From our private Gomoti Camp in the southern Okavango Delta, experience quiet game drives in our new fully electric safari vehicle. Operating from our off-grid camp and powered by the sun, this retrofitted Toyota Land Cruiser marks a new era in more sustainable safari transportation.

7

An Open "Window" Seat for Every Guest

The top-quality safari vehicles we charter have open sides (no glass to impede your shots) and 10 cushioned passenger seats—one in front next to the driver followed by three rows of three seats each. Yet we limit our capacity to just four travelers per vehicle on photo safaris! Furthermore, the three rows of seats are tiered—those in the rear sit up higher so no one's forward view is impaired. This ensures maximum comfort, viewing, space for gear, and easy photo opportunities.

8

Private Verandas for Personal Wildlife Photography

Our luxury tented safari camps have private verandas so you never miss a chance to encounter animals that may wander past—and enjoy snapping impromptu shots from your own secluded space.

9

Doors-Off Helicopter Flight over the Okavango Delta

Your Photo Expedition includes an exciting helicopter flight, with doors off for the best photography access! Soar over the mosaic of marshes and islands that comprise the Okavango Delta, one of the richest wildlife enclaves in all Africa. Year-round water supports an abundance of animals that we survey from the sky, getting unique aerial shots of creatures on the move.

10

The World's Finest Naturalist Guides

We're proud to work with the best-trained, most experienced Photo Expedition Leaders in Africa—guides who hold equal expertise as naturalists and photographers. Your Expedition Leader accompanies your group from start to finish, ensuring highly personalized service. We also have additional training resources provided by WWF scientists, to further enhance your interpretive experience. Our philosophy is simple: an African safari is only as good as the guide, so we must provide the very best! See Expedition Leader bios with traveler comments regarding the quality of our leaders.



11

Our Quality-Value Guarantee Ensures Your Outstanding Photo Safari

Every traveler receives Nat Hab's exclusive guarantee, which clearly states that we will meet the lofty expectations we set in our promotional materials. To our knowledge, this is the most ambitious guarantee made by any adventure travel company. Read our important promise.

12

Feel Good About Your Carbon-Neutral Journey

We care deeply about our planet, as we know you do. When you travel with us, the carbon emissions from your trip are 100% offset—including your round-trip flights from home. Natural Habitat Adventures became the world's first carbon-neutral travel company in 2007.

13

Natural Habitat Adventures is WWF's Travel Partner

Because of our commitment to environmentally friendly travel, as well as the exceptional quality of our adventures, World Wildlife Fund—the world's leading environmental conservation organization—has named Natural Habitat Adventures as its worldwide travel partner, a designation that makes us exceedingly proud.



Make It Private with Your Family or Friends

Travel privately, exclusively with your immediate family, multi-generational family or group of friends. Our in-house safari experts can reserve a private departure for your group or help you design your own custom Africa itinerary—their expertise is second to none! **Click here** to request more info.

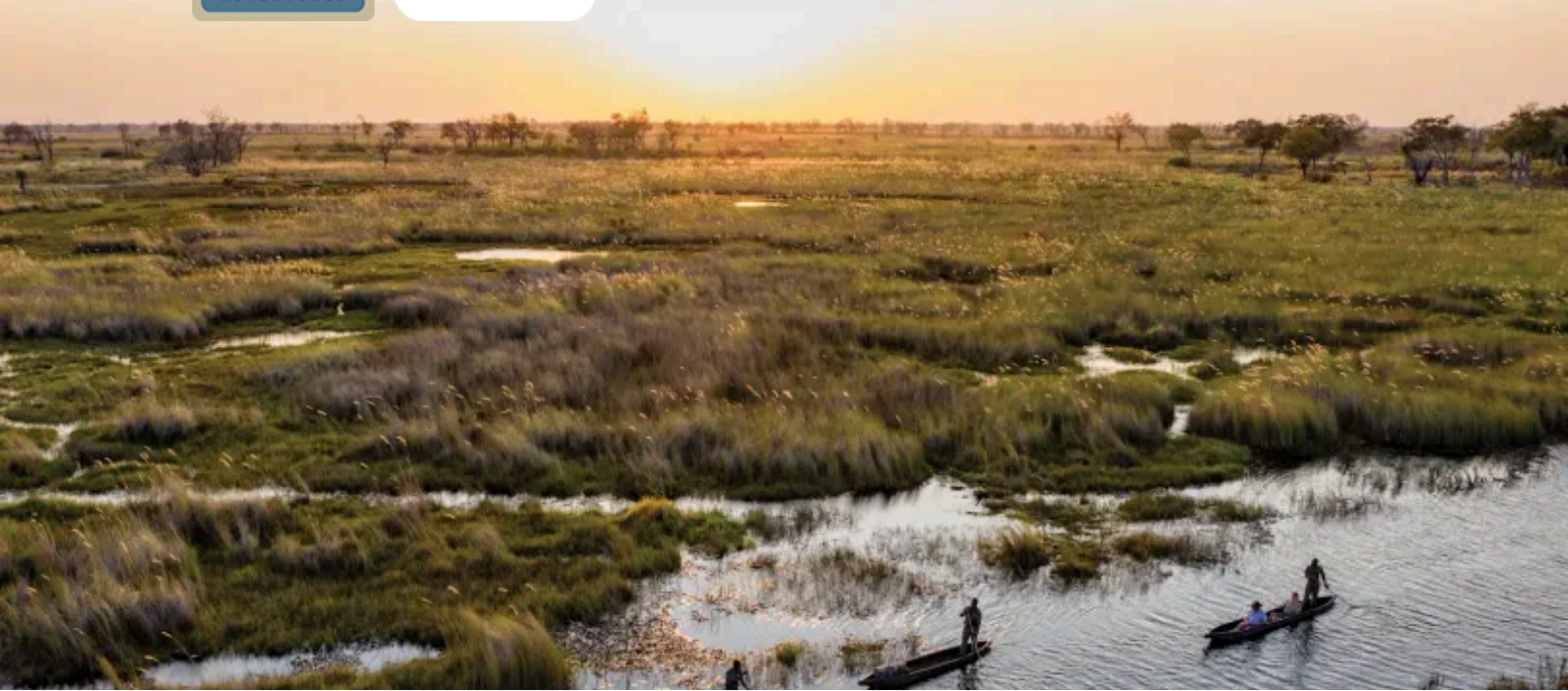
Please note that on Botswana Green Season Photo Expedition Make It Private departures we require a minimum group size of 4 travelers.

Also, please be aware that your per-person cost on a Make It Private trip will vary depending on the number of travelers in your group and may be as much as 10%-30% higher (ship-based trips may be even higher) than our normal trip cost unless you fill the trip.

This **Make It Private** option is available on nearly every Nat Hab trip for family and friend groups. Call an Adventure Specialist at 800-543-8917 or look for the "Make It Private" icon in the **pricing section** of a trip online at nathab.com to see prices based on your specific group size.



Discovering Our Planet Together



Dates & Pricing Summary:

Prices:
From \$17995
(+Air)

Group Size:
Limited to 8
Travelers

Physical Requirements:
Easy to Moderate

Botswana Green Season Photo Expedition Dates, Pricing & Info

Explore Desert & Delta in the Kalahari & Okavango, with Dramatic Skies & Baby Animals

2025 Departures

Departure	Return	Notes
Nov 27, 2025	Dec 8, 2025	
Dec 27, 2025	Jan 7, 2026	

2026 Departures

Departure	Return	Notes
Feb 7, 2026	Feb 18, 2026	
Mar 6, 2026	Mar 17, 2026	
Nov 28, 2026	Dec 9, 2026	
Dec 28, 2026	Jan 8, 2027	

2027 Departures



Discovering Our Planet Together

Departure	Return	Notes
Feb 7, 2027	Feb 18, 2027	
Mar 6, 2027	Mar 17, 2027	
Nov 28, 2027	Dec 9, 2027	
Dec 28, 2027	Jan 8, 2028	



Pricing

2025 Prices

Mouse over or tap dates above to view prices for specific departure dates.

- **Photo Expedition Price**
\$17995 to \$18495 (+internal air)



Internal Air Cost: \$2327 per person on Photo Expedition (this will be listed separately on our invoicing).

Single Occupancy: For a single room add \$1395. **Click here** to learn how you can avoid the single supplement.

Deposit: \$500 per person (nonrefundable)

Trip prices are per person based on double occupancy and are given in U.S. dollars.

Please read our Payment & Refund Policy here.

2026 Prices

Mouse over or tap dates above to view prices for specific departure dates.

- **Photo Expedition Price**
\$18995 to \$19495 (+internal air)

Internal Air Cost: \$2556 per person (this will be listed separately on our invoicing).

Single Occupancy: For a single room add \$1395. **Click here** to learn how you can avoid the single supplement.

Deposit: \$500 per person (nonrefundable)

Make It Private: View pricing to take this trip privately with just you and your select travel companions.

Trip prices are per person based on double occupancy and are given in U.S. dollars. **Please read our Payment & Refund Policy here.**

Included

- **Trip price includes:** Accommodations in luxury safari camps, services of Nat Hab's professional Expedition Leader, local guides and camp staff, premier open-sided 4-wheel drive Land Cruisers or Rovers, private Chobe boat cruise, visit with predator researcher at Gomoti Camp, all meals from dinner on Day 1 through breakfast on final day, some alcoholic beverages, some gratuities, airport transfers on Day 1 and final day, all activities and entrance fees, all taxes, permits and service fees.
- **Private helicopter flight** over the Okavango Delta, plus extra luggage allowance.
- **Internal air cost includes:** All light aircraft flights within the itinerary (this will be listed separately on our invoicing).



Not Included

Travel to and from the start and end point of your trip, some alcoholic beverages, some gratuities, passport and visa fees (if any), optional activities, items of a personal nature (phone calls, laundry and internet, etc.), airline baggage fees, airport and departure taxes (if any), required medical evacuation insurance, optional travel protection insurance.

Physical Requirements

Easy to Moderate

To participate in this trip, you must be able to walk unassisted at a steady pace for at least one mile over uneven terrain, climb steps to get into and out of our raised safari vehicles, and be able to tolerate daily outdoor excursions that may last 4-5 hours or even a full day at a time, sometimes in hot, windy and/or dusty conditions. Wildlife drives pose a particular type of physical demand on the body, as they require long hours of sitting and take place over terrain that is often very rough and bumpy, including dirt roads with many ruts and potholes. Travelers with back or neck problems, or other health issues that could be exacerbated by such conditions, should take this into consideration. While any walking safaris are considered optional, travelers must be able to walk unassisted to and from the vehicle to our camp accommodations, sometimes walking over uneven ground or on boardwalks. Days spent on safari are often long, as mornings typically start before daybreak and evening meals are served after sundown. Safari accommodations and vehicles are not climate-controlled and, depending on the season, temperatures can range from quite cold to extremely hot, so it is critical that travelers come prepared.

On custom or private departures with smaller groups, our ability to accommodate varying levels of physical abilities or interests is limited, since these trips are staffed with a single Expedition Leader who may be assisted, pending availability, by local guides.

Important Information About This Trip

During Botswana's green season, photography and game viewing offer a unique experience, as mother ungulates give birth at this time and the lush landscape provides a spectacular backdrop against which to observe the animals. To maximize access to the most exciting and remote areas, we stay in luxury tented camps (all amenities en suite) to provide comfort while enhancing the total safari experience. Changes to the itinerary may occur on these trips in order to take advantage of conditions unique to the season. Depending upon availability, itineraries may run in a different order from what is designated.

Mandatory Insurance

Since the areas we travel to are remote and wild (that's why we go there!), we require that all guests have, at minimum, medical evacuation insurance for this program. This is for the safety of all guests. We require that your chosen independent insurance plan includes at least \$250,000 in medical evacuation coverage.

To protect your investment and to provide peace of mind while you travel, we also strongly recommend purchasing comprehensive travel insurance. Plans may cover everything from medical treatment to trip cancellations and delays and lost luggage. Please contact our office if you would like more information about the medical evacuation and comprehensive travel insurance policies we offer by calling 800-543-8917.



Getting There & Getting Home

Plan to arrive in Livingstone, Zambia before 1 pm on Day 1 and you may depart Maun, Botswana anytime after 1:30 pm on the final day.

We can best serve you if our Natural Habitat Adventures Travel Desk makes your reservations, as our staff is intimately familiar with the special requirements of these programs and can arrange the most efficient travel. Please call us at 800-543-8917. Note that while we offer you the best possible rates available to us on airfare and additional nights' accommodations, you may find special web rates or better fares online.



Discovering Our Planet Together



Extension Details:

Cape Town Extension
\$1995

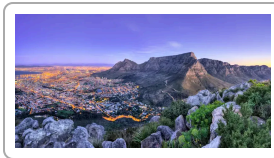
Wild Cape Coast Extension
\$2995

Sabi Sand Extension
\$4395

Namibia Desert Extension
\$5795

Botswana Green Season Photo Expedition Extensions

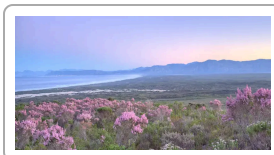
Explore Desert & Delta in the Kalahari & Okavango, with Dramatic Skies & Baby Animals



Cape Town Extension

Discover one of the world's most entrancing cities and its natural environs. Survey the view from Table Mountain, explore the Cape Peninsula, visit Cape Point Nature Reserve, see penguins at Boulders Beach, and tour the Winelands.

\$1995



Wild Cape Coast Extension

From our luxury ecolodge base on the Grootbos Private Nature Reserve, explore pristine coastal wilderness including the rare Cape Floral plant kingdom and Stony Point penguin colony.

\$2995



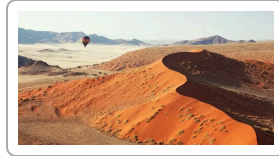
Sabi Sand Extension

An exclusive safari experience on a 160,000-acre private reserve that's one of Africa's best places to spot the famous Big Five—choose among intimate luxury camps and secluded boutique lodges.

\$4395



Discovering Our Planet Together



Namibia Desert Extension

Namibia's towering sand dunes, arid canyons and desert-adapted wildlife offer a distinct contrast to other southern Africa safari destinations—look for endangered black rhino, desert elephant and more.

\$5795 (+air)



Natural Habitat & WWF: Discovering Our Planet Together

Natural Habitat Adventures • PO Box 3065 • Boulder, CO USA 80307

USA & Canada: 800-543-8917 • International: 303-449-3711

© 2025 Natural Habitat Adventures

WWF's membership travel program is operated by Natural Habitat Adventures (Nat Hab). To date, Nat Hab has provided more than \$6 million in support of WWF's mission and will continue to give 1% of gross sales plus \$175,000 annually through 2028. WWF® and ©1986 Panda Symbol are owned by WWF. All rights reserved.