



Discovering Our Planet Together



Botswana: Kalahari, the Delta & Beyond

On This Green Season Safari, Fresh Grass Draws Desert Wildlife & New Babies Abound



Table of Contents:

Trip Overview	3
Trip Itinerary	4
Trip Accommodations	8
What Makes Nat Hab Different?	10
Make It Private	13
Dates & Pricing Information	14
Trip Extensions	19



Discovering Our Planet Together



Trip Details:

Days
12 Days / Nov–Mar

Price
From \$15895 (+Air)

Physical Requirements
Easy to Moderate

Botswana: Kalahari, the Delta & Beyond

On This Green Season Safari, Fresh Grass Draws Desert Wildlife & New Babies Abound

Botswana's lush summer, its most productive and colorful time, offers natural spectacles most travelers miss. Sporadic light rains in the Kalahari Desert mark a time of dramatic change, signaling a great influx of migrating wildlife and plains animal births..."bush babies" are everywhere! From January to April, witness Africa's second-largest migration, with 50,000 zebra and wildebeest passing through the Kalahari. Meet the San people, the earliest hunter-gatherers in southern Africa, whose culture dates back more than 30,000 years. In the Okavango Delta, water levels are typically low during this season, and the drier region of the delta bordering the Moremi Game Reserve offers superb wildlife viewing, with stable populations of lion, leopard, wild dog and much more. A special highlight is a visit with a predator researcher at Gomoti Camp, plus exclusive private stays at intimate luxury camps.

Trip Highlights

Experience intimate animal encounters at a quiet time of year, and capture stunning landscape photos against a backdrop of dramatic skies with constantly shifting clouds

On 4x4 game drives, enjoy prolific wildlife encounters at the time of year when new births fill the plains

Witness Victoria Falls during its mightiest seasonal flow, producing spray so profuse it creates a rain forest microclimate on the rim



Discovering Our Planet Together



Itinerary At A Glance

Day 1

Livingstone, Zambia—Zambezi River

Day 2

Mosi-oa-Tunya National Park—Victoria Falls / Village Visit / Rhino Walk

Day 3

Chobe National Park, Botswana / Okavango Delta—Santawani Private Concession

Days 4 & 5

Okavango Delta—Visit with Predator Researcher

Days 6 - 8

Central Okavango—Jao Private Concession

Days 9 - 11

Eastern Kalahari—Makgadikgadi Pans

Day 12

Maun / Depart

Botswana: Kalahari, the Delta & Beyond Itinerary

On This Green Season Safari, Fresh Grass Draws Desert Wildlife & New Babies Aboard

Day 1: Livingstone, Zambia—Zambezi River

Our Botswana green season safari begins just over the border in Livingstone, Zambia, where our Expedition Leader meets you on arrival at the airport. Transfer to Toka Leya Camp on the banks of the mighty Zambezi. Individual chalets face west over the river for sunset views, and we frequently see and hear elephants and hippos on shore. Admire the scenery on a sunset cruise before returning to camp for a welcome dinner.





Day 2: Mosi-oa-Tunya National Park—Victoria Falls / Village Visit / Rhino Walk

Our focus today is Mosi-oa-Tunya National Park, which means "the smoke that thunders" in the local Kololo and Lozi languages—a reference to the park's centerpiece, Victoria Falls, which we explore on a guided walking tour this morning. The world's most astounding cataract, Victoria Falls spans more than a mile and plummets 350 feet into the Zambezi Gorge below, producing so much spray that the intense moisture has created a rain forest microecosystem on the rim. A network of walkways offers varying viewpoints over the falls, with exciting photography opportunities.

Next, we visit a nearby village to learn about the culture and daily life of the local people. Then, we head farther into the national park to look for white rhinos—our best chance to see them up close. This small but growing population currently numbers 10 individuals including calves. They're carefully managed and protected from poaching by around-the-clock armed guards. Because predators do not live in the park, we approach the rhinos via a short walk through the diverse landscape, a combination of tall riverine forests, woodland and open grasslands. We're likely to see elephants, giraffes, baboons, plentiful birds and zebra. But the true prize is encountering the placid rhinos, endangered icons of the African wild. During the excursion, we follow the rhinos' movements and observe their behavior as we learn about the critical conservation measures striving to bring this population — and the entire species — back from the brink.

Day 3: Chobe National Park, Botswana / Okavango Delta—Santawani Private Concession

Leaving Zambia by road, we reach the Kazungula border on the Chobe River, where Botswana, Zambia, Zimbabwe and Namibia meet. Entering Botswana, our destination is Chobe National Park, known for its enormous elephant herds and stable population of general wildlife species throughout the year. On a private boat cruise on the Chobe River, expect to see elephant, hippo, crocodile and possibly the more elusive puku and Chobe bushbuck. Up to 400 bird species reside in the park at this time of year, and waterbirds abound, especially herons, storks and egrets. Later this afternoon we fly by light aircraft to Nat Hab's Gomoti Camp in the heart of the community-owned Santawani Concession in the Okavango Delta. This small, intimate camp is reserved exclusively for our group, offering a tremendous sense of seclusion on this private reserve.



Days 4 & 5: Okavango Delta—Visit with Predator Researcher

Earth's largest inland water system, the Okavango Delta, became UNESCO's 1,000th World Heritage Site in 2014. The Okavango River's headwaters lie in the western highlands of Angola, joining with other rivers in Namibia and Botswana to meet the Kalahari Desert, where a green oasis sprawls amid the sands and dry savanna. With its vast network of channels and wetlands, the delta is home to a profuse collection of wildlife and vegetation. Though some of the region is permanently flooded (or typically has been in years past), the water recedes during the southern summer months, opening up normally wetter areas of the delta for game drives and expansive wildlife viewing. Specific wildlife sightings, while always abundant, will depend somewhat on seasonal water levels.

Beyond the flooded areas, a mosaic of varied landscapes includes drier zones like the one surrounding our private Gomoti Camp. A mix of riverine woodland, acacia scrub and open floodplains provides ample food for a large array of browsers and grazers as well as predators. During a private visit with an on-site predator researcher, learn about local studies on wild dog, cheetah and leopard. Wildlife is abundant around camp, and we often see animals wandering through. The diverse range of habitats, plus the year-round lifeline of the Gomoti River, make this region ideal for all-day wildlife excursions, including on traditional 4x4 game drives and night drives. Regular sightings include leopard, lion, wild dog, hyena, cheetah, giraffe, elephant, impala, kudu, zebra, wildebeest and buffalo. Birdlife is also outstanding, and we may see ground hornbill, crimson-breasted shrike and yellow morph, among many others. In the evenings, paraffin hurricane lanterns and a crackling campfire create a romantic ambience in camp.

Days 6 - 8: Central Okavango—Jao Private Concession

This afternoon we fly to the center of the Okavango Delta for a three-night stay on the private Jao Concession, marked by palm-studded islands, riverine forests and sprawling floodplains. Our secluded camp is set within a productive wetland nurturing water-adapted wildlife like the rare sitatunga and abundant red lechwe. In the summer months when typical inundation recedes, lechwe, tsessebe and elephant are prevalent, and we may see lion and the occasional leopard. In the channels, look for hippos and crocodiles, plus scores of birds in the marshes. Pel's fishing owl is a prize sighting, and we may spot African and lesser jacanas, slaty egret, African skimmer, wattled crane and malachite kingfisher, to name just a few. Wildlife concentrations depend on water flow and volume, changing from season to season.

Encounter wildlife in thrilling proximity on 4x4 drives, guided walks (safety permitting), and poled mokoro excursions if water levels permit. The mokoro is the traditional dugout canoe of the delta, and Okavango-born polers reveal intimate secrets of delta life as we spot tiny frogs and colorful waterbirds. Guests may also add an optional 30-minute helicopter flight over the greater Okavango Delta (additional cost), with doors off for the most spectacular photography opportunities! Each evening, retreat to camp for dinner and stories around the flickering campfire before retiring under canvas, surrounded by the night sounds of the African bush.

Please note: Water levels and activities may vary based on actual amounts of annual rainfall.



Days 9 - 11: Eastern Kalahari—Makgadikgadi Pans

Transfer via Maun by light aircraft to the eastern side of the 360,000-square-mile Kalahari Desert, enjoying a thrilling aerial view on the stark landscape and roaming wildlife below. Our tented camp rests on the edge of the world's largest salt pan, an oasis of comfort shaded by acacia and palm trees. The Makgadikgadi Pans formed when an ancient lake evaporated thousands of years ago, and these shallow depressions are all that remain of once-enormous Lake Makgadikgadi. Today, this vast expanse of salt glitters in the intense sun, evoking a moonscape. The only visible plant life is a thin layer of blue-green algae, but seasonal rains turn the pans into an important habitat for migrating animals, including wildebeest and one of Africa's largest zebra populations, along with the predators that pursue them, including the Kalahari's famous black-maned lions.

During our visit, look for unusual desert-adapted creatures on private game drives as we head out in search of gemsbok, springbok, red hartebeest and steenbok, plus many small mammals such as honey badger and mongoose, and plentiful birds and reptiles. We'll also interact with a friendly habituated colony of meerkats. The Kalahari is the ancient home of the San people, who have subsisted in these austere environs for millennia. Our time includes cultural engagements offering insight into the history and traditions of the clans in the area. Back at camp each night, enjoy some of the best stargazing on the planet.

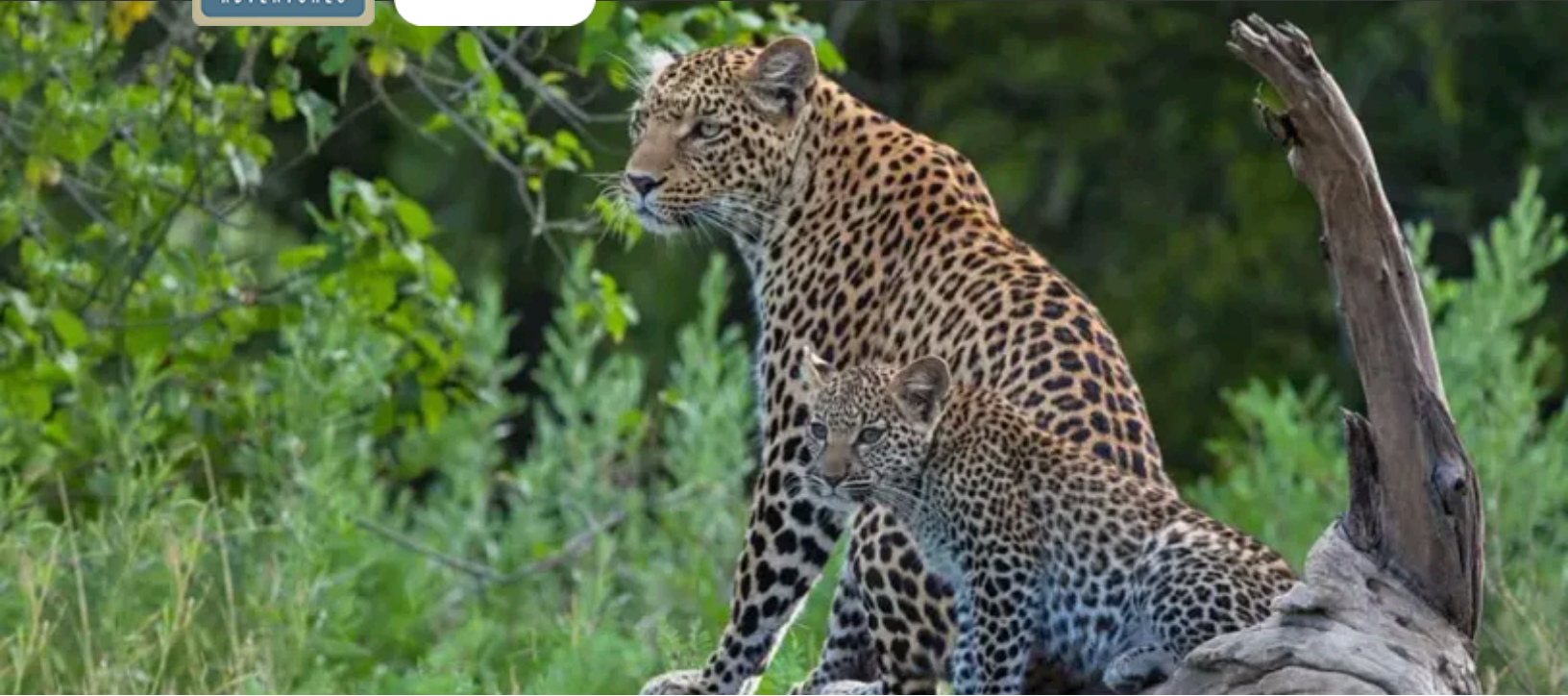
Day 12: Maun / Depart

Our Botswana safari comes to a close today when we depart by air for Maun to connect with onward flights.

Click here *to view the seasonal variations of weather and wildlife viewing in Botswana.*



Discovering Our Planet Together



Accommodation Details:

Toka Leya

Nat Hab's Gomoti Camp–Okavango South

Nat Hab's Pelo Camp–Heart of the Delta

Camp Kalahari

For detailed descriptions, visit nathab.com/africa/botswana-kalahari-delta-beyond/accommodations

Botswana: Kalahari, the Delta & Beyond Accommodations

On This Green Season Safari, Fresh Grass Draws Desert Wildlife & New Babies Aboard



Toka Leya

This luxurious camp on the Zambia side overlooks the Zambezi River and its islands, with hippos and crocodiles on view from tents that are raised on stilts and connected by wooden walkways.



Nat Hab's Gomoti Camp–Okavango South

Our private camp, exclusively for our use, has just five canvas tents in an intimate setting evocative of an earlier safari era, illuminated by the vintage glow of paraffin lanterns and a crackling campfire.

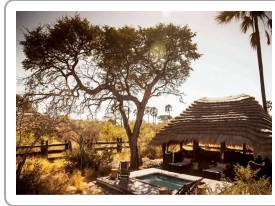


Nat Hab's Pelo Camp–Heart of the Delta

From this seasonal tented camp on the Jao Concession in the heart of the delta, guests experience a watery wilderness immersion with lodging and excursions inside permanently flooded terrain.



Discovering Our Planet Together



Camp Kalahari

Nestled among acacias and Mokolwane palms on Hyena Island at the edge of the vast Makgadikgadi Salt Pans, 10 spacious Meru tents occupy the historic site of storied expeditions.



The Best Southern Summer Safari You'll Find

Experiencing the Kalahari Desert and Botswana's Okavango Delta during the green season is a distinctive nature adventure in its own right. But to do it the way *we* do it—maximizing seclusion, with close-up wildlife encounters in especially remote areas—takes this safari experience to a whole different level. Read on!

- 1 A Small Group—Just 7 Guests—Ensures a More Authentic Safari** Encounters with the natural world are more meaningful in smaller groups—that's why we limit this safari to a maximum of seven guests. This very small group size ensures the most personalized experience possible, in exceptionally secluded locations.
- 2 A Diverse Summer Season Itinerary** Our less-conventional itinerary offers an experience of Botswana's prolific wildlife during a season when new life abounds but visitors are few. In tandem with World Wildlife Fund, we've designed it to maximize a diverse array of habitats and settings, for the best range of wildlife viewing—including Africa's second-largest migration of zebra and wildebeest from January to April.
- 3 Stay in Solitude on Private Reserves** In contrast to more heavily visited national parks, we stay in seclusion on Botswana's premier private reserves, including a coveted location next to Makgadikgaki Pans National Park, where we have easy access to all the activities the area has to offer. At this time of year, floodwaters are receding in some areas of the Okavango Delta, opening up vast areas for wildlife viewing on land. In addition to regular daytime game drives, we also do exciting night drives, not allowed in the public parks, in search of nocturnal wildlife.
- 4 Intimate Luxury Camps** A stand-apart element of this safari is our exceptionally small and secluded camps. Within the privately owned Santawani Concession, Gomoti Tented Camp is for us alone, offering an encounter with the African wilderness evocative of a century ago—which very few safari-goers get to experience.
- 5 Chartered Flights Maximize Your Time on Safari** We book seats on chartered light aircraft for transfers between safari locations, enhancing your time with wildlife and maximizing comfort by eliminating long drives over rough dirt roads.



6

Explore from Our Electric Safari Vehicle

From our private Gomoti Camp in the southern Okavango Delta, experience quiet game drives in our new fully **electric safari vehicle**. Operating from our off-grid camp and powered by the sun, this retrofitted Toyota Land Cruiser marks a new era in more sustainable safari transportation.

7

An Open "Window" Seat for Everyone

The top-quality safari vehicles we charter have open sides (no glass to interfere with your view) and 10 cushioned passenger seats—one in front next to the driver followed by three rows of three seats each. Yet we limit our capacity to just seven travelers per vehicle on wildlife drives! The three rows of seats are tiered, with higher seats in the rear so no one's forward view is impaired. This ensures maximum comfort, viewing, space for gear, and easy photo opportunities.

8

Private Verandas for Personal Wildlife Viewing Our luxury tented safari camps have private verandas so you never miss a chance to encounter animals that may wander past—and enjoy the view from your own secluded space.

9

The World's Finest Naturalist Guides We're proud to work with the best-trained, most experienced naturalist guides in Africa. A Nat Hab Safari Expedition Leader accompanies your group from start to finish, ensuring highly personalized service. Our Expedition Leaders are among the most qualified guides in Africa, averaging 15 years' guiding experience, with additional training resources provided by WWF scientists. Our philosophy is simple: an African safari is only as good as the guide, so we must provide the very best! **See Expedition Leader bios** with traveler comments regarding the quality of our leaders.

10

Our Quality-Value Guarantee Ensures Your Outstanding Safari Every traveler receives Natural Habitat's exclusive guarantee, which clearly states that we will meet the lofty expectations we set in our promotional materials. To our knowledge, this is the most ambitious guarantee made by any adventure travel company.

11

Feel Good About Your Carbon-Neutral Journey

We care deeply about our planet, as we know you do. When you travel with us, the carbon emissions from your trip are 100% offset—including your round-trip flights from home. Natural Habitat Adventures has been the world's first carbon-neutral travel company since 2007.



12

Natural Habitat Adventures is WWF's Travel Partner

Because of our commitment to environmentally friendly travel, as well as the exceptional quality of our adventures, World Wildlife Fund—the world's leading environmental conservation organization—has named Natural Habitat Adventures as its worldwide travel partner, a designation that makes us exceedingly proud.



Make It Private or Design Your Own Custom Safari

Travel privately, exclusively with your immediate family, multi-generational family or group of friends. Our in-house safari experts can reserve a private departure for your group or help you design your own custom Africa itinerary—their expertise is second to none! **Click here** to request more info.

Please note that on Botswana: Kalahari, the Delta & Beyond Make It Private departures we require a minimum group size of 3 travelers.

Also, please be aware that your per-person cost on a Make It Private trip will vary depending on the number of travelers in your group and may be as much as 10%-30% higher (ship-based trips may be even higher) than our normal trip cost unless you fill the trip.

This **Make It Private** option is available on nearly every Nat Hab trip for family and friend groups. Call an Adventure Specialist at 800-543-8917 or look for the "Make It Private" icon in the **pricing section** of a trip online at nathab.com to see prices based on your specific group size.



Discovering Our Planet Together



Dates & Pricing Summary:

Prices:
From \$15895
(+Air)

Group Size:
Limited to 7
Travelers

Physical Requirements:
Easy to Moderate

Botswana: Kalahari, the Delta & Beyond Dates, Pricing & Info

On This Green Season Safari, Fresh Grass Draws Desert Wildlife & New Babies Abound

2025 Departures

Departure	Return	Notes
Nov 21, 2025	Dec 2, 2025	
Nov 30, 2025	Dec 11, 2025	
Dec 9, 2025	Dec 20, 2025	
Dec 18, 2025	Dec 29, 2025	
Dec 30, 2025	Jan 10, 2026	

2026 Departures

Departure	Return	Notes
Jan 20, 2026	Jan 31, 2026	
Jan 26, 2026	Feb 6, 2026	



Dates & Pricing Summary:

Prices:

From \$15895 (+Air)

Group Size:

Limited to 7 Travelers

Physical Requirements:

Easy to Moderate

Departure	Return	Notes
Feb 1, 2026	Feb 12, 2026	
Feb 19, 2026	Mar 2, 2026	
Feb 28, 2026	Mar 11, 2026	
Mar 3, 2026	Mar 14, 2026	
Mar 11, 2026	Mar 22, 2026	
Mar 20, 2026	Mar 31, 2026	
Mar 26, 2026	Apr 6, 2026	
Mar 29, 2026	Apr 9, 2026	
Nov 22, 2026	Dec 3, 2026	
Dec 1, 2026	Dec 12, 2026	
Dec 10, 2026	Dec 21, 2026	
Dec 19, 2026	Dec 30, 2026	
Dec 31, 2026	Jan 11, 2027	



Pricing

2025 Prices

➤ **Trip Price**

\$15895 to \$16295 (+internal air)

Internal Air Cost: \$1984 per person (this will be listed separately on our invoicing).

Single Occupancy: For a single room add \$1395. **Click here** to learn how you can avoid the single supplement.

Deposit: \$500 per person (nonrefundable)

Make It Private: View pricing to take this trip privately with just you and your select travel companions on our Kalahari, Delta & Beyond Itinerary.

Trip prices are per person based on double occupancy and are given in U.S. dollars.

Please read our Payment & Refund Policy here.



2026 Prices

Mouse over or tap dates above to view prices for specific departure dates.

➤ **Trip Price**

\$16995 to \$17395 (+internal air)

Internal Air Cost: \$1984 per person (this will be listed separately on our invoicing).

Single Occupancy: For a single room add \$1395. **Click here** to learn how you can avoid the single supplement.

Deposit: \$500 per person (nonrefundable)

Make It Private: View pricing to take this trip privately with just you and your select travel companions on our Kalahari, Delta & Beyond Itinerary.

Trip prices are per person based on double occupancy and are given in U.S. dollars. **Please read our**

Payment & Refund Policy here.

Included

➤ **Trip price includes:** Accommodations in luxury safari camps, services of Nat Hab's professional Expedition Leader, local guides and camp staff, premier open-sided 4-wheel drive Land Cruisers or Rovers, private Chobe boat cruise, visit with predator researcher at Gomoti Camp, all meals from dinner on Day 1 through breakfast on final day, some alcoholic beverages, some gratuities, airport transfers on Day 1 and final day, all activities and entrance fees, all taxes, permits and service fees.

➤ **Internal air cost includes:** All light aircraft flights within the itinerary (this will be listed separately on our invoicing).



Not Included

Travel to and from the start and end point of your trip, some alcoholic beverages, some gratuities, passport and visa fees (if any), optional activities, items of a personal nature (phone calls, laundry and internet, etc.), airline baggage fees, airport and departure taxes (if any), required medical evacuation insurance, optional travel protection insurance.

Physical Requirements

Easy to Moderate

To participate in this trip, you must be able to walk unassisted at a steady pace for at least one mile over uneven terrain, climb steps to get into and out of our raised safari vehicles, and be able to tolerate daily outdoor excursions that may last 4-5 hours or even a full day at a time, sometimes in hot, windy and/or dusty conditions. Wildlife drives pose a particular type of physical demand on the body, as they require long hours of sitting and take place over terrain that is often very rough and bumpy, including dirt roads with many ruts and potholes. Travelers with back or neck problems, or other health issues that could be exacerbated by such conditions, should take this into consideration. While any walking safaris are considered optional, travelers must be able to walk unassisted to and from the vehicle to our camp accommodations, sometimes walking over uneven ground or on boardwalks. Days spent on safari are often long, as mornings typically start before daybreak and evening meals are served after sundown. Safari accommodations and vehicles are not climate-controlled and, depending on the season, temperatures can range from quite cold to extremely hot, so it is critical that travelers come prepared.

On custom or private departures with smaller groups, our ability to accommodate varying levels of physical abilities or interests is limited, since these trips are staffed with a single Expedition Leader who may be assisted, pending availability, by local guides.

Important Information About This Trip

During Botswana's green season, photography and game viewing offer a unique experience, as mother ungulates give birth at this time and the lush landscape provides a spectacular backdrop against which to observe the animals. To maximize access to the most exciting and remote areas, we stay in luxury tented camps (all amenities en suite) to provide comfort while enhancing the total safari experience. Changes to the itinerary may occur on these trips in order to take advantage of conditions unique to the season. Depending upon availability, itineraries may run in a different order from what is designated.

Mandatory Insurance

Since the areas we travel to on this trip are remote and wild (that's why we go there!), we require medical evacuation insurance for our guests' safety. If you decline the medical evacuation insurance coverage offered by Natural Habitat, we request that you send us documentation of the independent coverage you have selected. We will add the cost of a medical evacuation policy to your tour invoice until you provide our office with proof of coverage, including your insurance company's name, contact number and your individual policy number. Thank you for understanding that our policy exists exclusively in the interest of our guests' safety.



Getting There & Getting Home

Plan to arrive in Livingstone, Zambia before 1 pm on Day 1 and you may depart Maun, Botswana anytime after 1:30 pm on the final day.

We can best serve you if our Natural Habitat Adventures Travel Desk makes your reservations, as our staff is intimately familiar with the special requirements of these programs and can arrange the most efficient travel. Please call us at 800-543-8917. Note that while we offer you the best possible rates available to us on airfare and additional nights' accommodations, you may find special web rates or better fares online.



Discovering Our Planet Together



Extension Details:

Cape Town Extension
\$1995

Wild Cape Coast Extension
\$2995

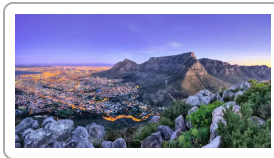
Namibia Desert Extension
\$5795

Sabi Sand Extension
\$4395

Okavango Delta Helicopter Adventure

Botswana: Kalahari, the Delta & Beyond Extensions

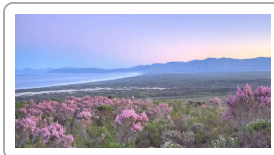
On This Green Season Safari, Fresh Grass Draws Desert Wildlife & New Babies Aboard



Cape Town Extension

Discover one of the world's most entrancing cities and its natural environs. Survey the view from Table Mountain, explore the Cape Peninsula, visit Cape Point Nature Reserve, see penguins at Boulders Beach, and tour the Winelands.

\$1995



Wild Cape Coast Extension

From our luxury ecolodge base on the Grootbos Private Nature Reserve, explore pristine coastal wilderness including the rare Cape Floral plant kingdom and Stony Point penguin colony.

\$2995



Namibia Desert Extension

Namibia's towering sand dunes, arid canyons and desert-adapted wildlife offer a distinct contrast to other southern Africa safari destinations—look for endangered black rhino, desert elephant and more.

\$5795 (+air)



Discovering Our Planet Together



Sabi Sand Extension

An exclusive safari experience on a 160,000-acre private reserve that's one of Africa's best places to spot the famous Big Five—choose among intimate luxury camps and secluded boutique lodges.

\$4395



Okavango Delta Helicopter Adventure

Search for wildlife amid the Okavango Delta's rich tapestry of islands, plains and lagoons on an exhilarating scenic helicopter flight.



Natural Habitat & WWF: Discovering Our Planet Together

Natural Habitat Adventures • PO Box 3065 • Boulder, CO USA 80307

USA & Canada: 800-543-8917 • International: 303-449-3711

© 2025 Natural Habitat Adventures

WWF's membership travel program is operated by Natural Habitat Adventures (Nat Hab). To date, Nat Hab has provided more than \$6 million in support of WWF's mission and will continue to give 1% of gross sales plus \$175,000 annually through 2028. WWF® and ©1986 Panda Symbol are owned by WWF. All rights reserved.