



Discovering Our Planet Together



Ultimate Alaska Wildlife Safari

Go Farther into the Last Frontier on Our Small-Group Wildland Immersion



Table of Contents:

Trip Overview	3
Trip Itineraries	4
June Itinerary — Nat Hab's Bear Camp	5
July & August Itinerary — Brooks Falls	11
Trip Accommodations	16
What Makes Nat Hab Different?	18
Make It Private	21
Dates & Pricing Information	22
Trip Extensions	27



Discovering Our Planet Together



Trip Details:

Days
12 Days / Jun-Aug

Price
From \$17795 (+Air)

Physical Requirements
Moderate

Ultimate Alaska Wildlife Safari

Go Farther into the Last Frontier on Our Small-Group Wildland Immersion

While superlatives strive to convey the grandeur of Alaska, they never quite manage to capture the reality. But you'll find it on this peerless wilderness adventure! In the company of top naturalist guides, experience the remote backcountry of Denali National Park where grizzlies, wolves and caribou roam the tundra beneath the Alaska Range. Ride the historic Alaska Railroad over Moose Pass to Seward. Look for whales, otters and puffins in Kenai Fjords, cruise to the face of a tidewater glacier, and overnight on private Fox Island. Then, cap off your northern safari with the world's best bear viewing! Following the seasonal patterns of the bears, our itinerary includes either our private Bear Camp in Lake Clark National Park or a visit to Katmai National Park when the salmon are running up the Brooks River. Discover the real Alaska: bigger, wilder and more enthralling than you ever imagined!

Trip Highlights

Spend intimate, unhurried time with brown bears on a rare comprehensive Alaska itinerary that includes a fly-in wilderness experience on Alaska's Bear Coast

Fly past the icy flanks of 20,310-foot Denali to our wilderness lodge, and search for wildlife among the tundra, taiga and glacial river valleys in solitude

Cruise Kenai Fjords National Park aboard our chartered boat, surrounded by glaciers, seabirds and marine mammals, and stay on an isolated beach



Discovering Our Planet Together



Trip Details:

Days

12 Days / Jun-Aug

Price

From \$17795
(+Air)

Physical Requirements

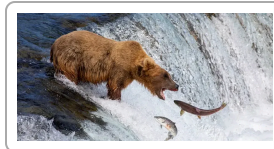
Moderate

Ultimate Alaska Wildlife Safari Itineraries

Go Farther into the Last Frontier on Our Small-Group Wildland Immersion



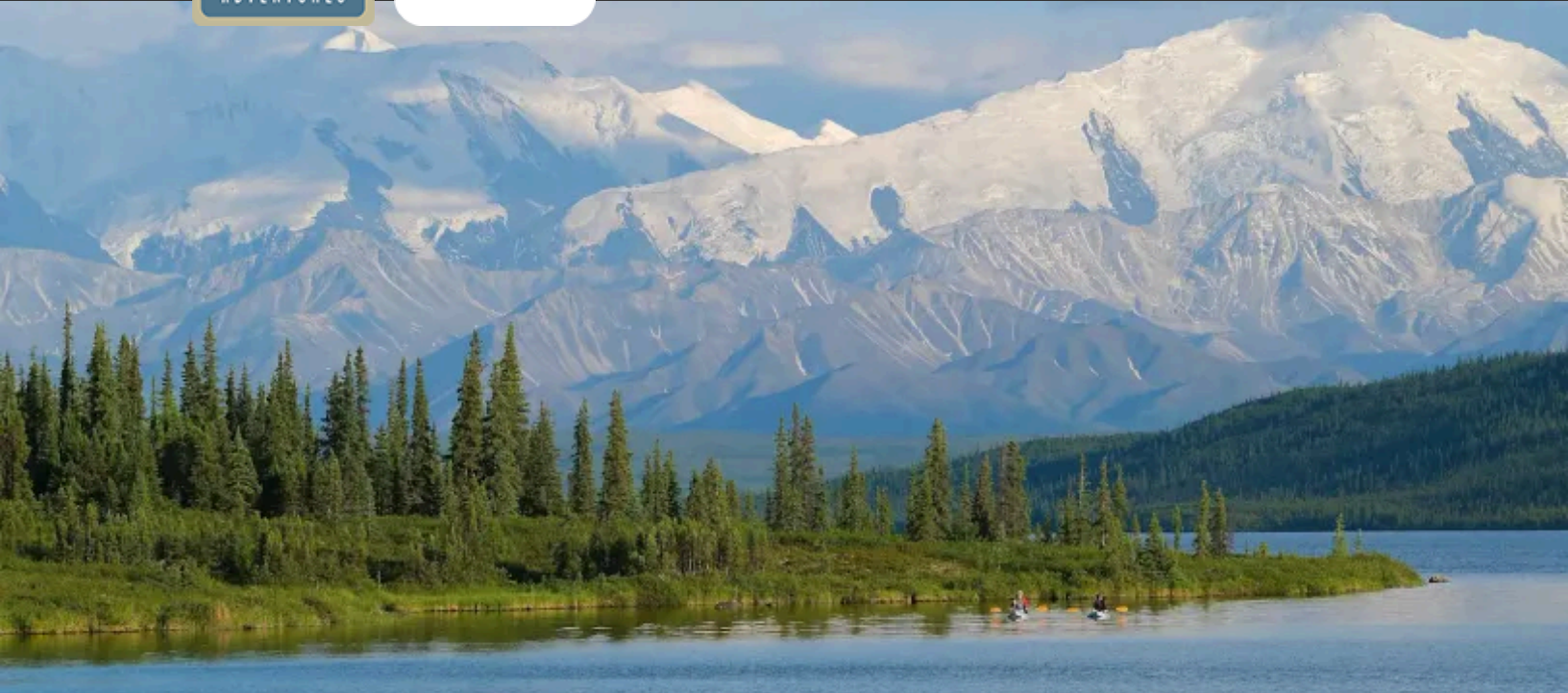
June Itinerary — Nat Hab's Bear Camp



July & August Itinerary — Brooks Falls



Discovering Our Planet Together



Itinerary At A Glance

- Day 1**
Fairbanks, Alaska
- Day 2**
Denali National Park—Chartered Helicopter to Backcountry Lodge
- Day 3**
Exploring the Remote Denali Wilderness
- Day 4**
Denali / Anchorage
- Day 5**
Alaska Railroad Dome Car to Seward / Private Fox Island—Kayaking
- Day 6**
Private Wildlife Cruise in Kenai Fjords National Park / Fox Island
- Day 7**
Fox Island / Seward / Homer / Odyssey Lodge

June Itinerary — Nat Hab's Bear Camp Itinerary

Go Farther into the Last Frontier on Our Small-Group Wildland Immersion

Day 1: Fairbanks, Alaska

Our grand Alaska nature adventure begins in Fairbanks, Alaska's "Golden Heart City." Capital of the vast Interior, Fairbanks retains its frontier flavor with pioneer saloons, paddlewheelers and outlying mining camps. Fairbanks is also home to the flagship campus of the University of Alaska system, where the famous Geophysical Institute is headquartered, leading research in the study of permafrost, earthquakes, sea ice and the aurora borealis. Meet your Expedition Leader at a welcome dinner this evening, who offers an orientation to all the adventures to come.





Itinerary At A Glance

Day 8

Kachemak Bay State Park—
Grewingk Glacier Hike

Day 9

Homer / Private Flight to Nat
Hab's Alaska Bear Camp

Day 10

Bear Viewing in Lake Clark
National Park

Day 11

Bear Viewing / Private Flight to
Homer

Day 12

Homer / Depart

Day 2: Denali National Park—Chartered Helicopter to Backcountry Lodge

This morning we drive south through boreal forest along the Nenana River to Denali National Park. At 6 million acres—larger than the state of Massachusetts—Denali is one of the world's great wilderness preserves. The park's namesake is the highest peak in North America, towering 20,310 feet over alpine tundra and taiga that provide habitat for abundant wildlife. The mountain's name—Denali—means "The High One" in the Athabascan language.

Due to an extended road closure in the interior of Denali National Park as a result of a major landslide in 2021, access to the remote backcountry at the end of the 92-mile-long park road is now possible only by air. At the park entrance, we board a chartered helicopter for a spectacular aerial journey to Denali Backcountry Lodge, isolated in a vast expanse of wilderness. Spending two nights here is an exclusive experience very few visitors to Alaska get, even before the road was closed – and it's an even rarer opportunity now. As we fly over the tangled veins of glacier-fed rivers, broad valleys and steep mountainsides, look for wildlife along the edge of the spruce forest and on the braided gravel river bars—we could see moose, caribou, Dall sheep, grizzlies and occasionally wolves—"Alaska's Big Five."

Day 3: Exploring the Remote Denali Wilderness

From our base at Denali Backcountry Lodge, a host of activities offers a chance to learn about the natural and cultural history of our environs, including the wildlife that thrives here, the Athabascan people who lived off this land for 10,000 years, and the pioneers who mined for gold in nearby Kantishna at the turn of the 20th century. Take a hike in search of wildlife with our Expedition Leader and lodge naturalist guides. Paddle a kayak on Wonder Lake, offering the iconic postcard shot of Denali's massive white hulk rising behind. Try your hand at fishing in Moose Creek. Ride a mountain bike. And just drink up the profound beauty and silence of wild country on a scale few people will experience in their lifetimes. At the end of our day of adventure, return to the lodge for a hearty dinner featuring fresh seasonal, regional fare spotlighted in every dish. Afterward, head to the campfire to roast marshmallows for s'mores.



Day 4: Denali / Anchorage

After lunch, depart our wilderness lodge and fly back to the park entrance via chartered helicopter. Weather permitting, we'll have stunning eye-level views of the icy flanks of Denali en route. We disembark and board a spacious mini-bus for our journey south to Anchorage across the Alaska Range. Our route climbs above tree line over Broad Pass, then descends through taiga forest to follow the Susitna River through thick stands of birch, balsam poplar, willow and spruce. Eventually, we reach Anchorage on Cook Inlet, backdropped by the glacier-crowned peaks of the Chugach Range. With a population of roughly 300,000, Anchorage is Alaska's largest city and its primary commerce and transportation hub.

Day 5: Alaska Railroad Dome Car to Seward / Private Fox Island—Kayaking

Today we wake early to travel the most scenic section of the historic Alaska Railroad, built in the early 20th century. The state-owned railroad's mainline is 470 miles long, connecting Seward in the south with Fairbanks up north. From the dome car, enjoy a classic train journey along Turnagain Arm as we keep an eye out for tidal bores that create waves big enough for local surfers to ride! To the north lie the ice-clad peaks and lush glacial valleys of the Chugach Range, harboring the northernmost temperate rain forest in North America. The corridor we follow winds through the Kenai Mountains–Turnagain Arm National Heritage Area, a designation that recognizes the area's unique cultural, geographic and historical features. Once we cross Moose Pass, the rail line drops back to the coast, ending at its southern terminus, the Port of Seward on Resurrection Bay.

In Seward's small boat harbor, look for sea otters frequently seen bobbing among the yachts and docks. Here, we board a boat for the voyage to private Fox Island on the edge of Kenai Fjords National Park. Our isolated location, fronting a wild pebble beach backdropped by steep forested mountains, reveals the pristine side of Alaska most visitors miss. The Kenai Fjords region is famed for its sea kayaking, and an optional paddling excursion late this afternoon is likely to reveal some of the area's prolific marine life.

Day 6: Private Wildlife Cruise in Kenai Fjords National Park / Fox Island

Iconic images of Alaska are on display today from our private chartered boat as we explore a marine realm where vestiges of the Ice Age linger. Our small vessel allows us to approach wildlife at close range, and Kenai Fjords National Park provides excellent opportunities for viewing humpback whales, orcas, Dall's porpoise, sea lions, sea otters and bobbing puffins. Weave among islands and rocky cliffs where seabirds nest, and look for bald eagles in the treetops above. Jagged glaciers wind from the mountain heights to the sea, and we may observe icebergs calving with a thunderous crash from a glacier's towering blue face. Following our all-day outing, our boat returns us to our secluded lodge on Fox Island for another night of peace and solitude in the coastal wilderness.



Day 7: Fox Island / Seward / Homer / Odyssey Lodge

After a last morning on serene Fox Island, board our private boat for the return journey up Resurrection Bay to Seward, where you'll have some free time to wander around this historic harbor town. From Seward, we head south on a spectacular drive to Homer. The mountain ranges of the Kenai Peninsula rise one after another, sourcing some of Alaska's richest salmon rivers. Homer is known as "the End of the Road" in Alaska, and we follow it all the way down to the harbor on the Homer Spit. Homer is renowned as the Halibut Fishing Capital of the World, and we may see fishermen unloading their catch—the biggest halibut can be eight feet long and up to 500 pounds! While halibut are one of Alaska's most valuable fisheries, Homer also offers excellent fishing for several salmon species, lingcod and rockfish. At the marina, board a private boat transfer to Odyssey Lodge, a secluded wilderness retreat on China Poot Bay, where we spend the next two nights in exceptional privacy.

Day 8: Kachemak Bay State Park—Grewingk Glacier Hike

Set out this morning for all-day hiking adventure in Kachemak Bay State Park. Depart from the beach in front of our lodge on a 20-minute water taxi ride through the island-studded marine realm that's home not only to coveted sport fish but also sea otters, seals, porpoises, sea lions, orcas, whales, bald eagles and puffins. We disembark at the trailhead to Grewingk Glacier, a 13-mile-long river of ice that winds down from the Kenai Mountains. The glacier was named in 1880 by famed naturalist William Healey Dall, for Constantin Grewingk, who published a study in German on the geology and volcanism of Alaska. The trail climbs gently but steadily upward through a forest of cottonwoods and Sitka spruce to emerge above tree line onto the alluvial flats marking the glacier's former advance. Eventually, we reach the pristine meltwater lake in front of the glacier, viewing its jagged hulk in the distance. Icebergs float on the surface, and we may get to see more of them calve from the glacier's face. Once we return to our lodge, there's time to relax on the deck overlooking the bay before another gourmet dinner featuring fresh Alaskan seafood.



Day 9: Homer / Private Flight to Nat Hab's Alaska Bear Camp

Is it possible to say we've saved the best for last? Well, it all depends on how you weigh the wonders of Alaska, but our bear adventures begin today and will surely be a highlight of your trip. After lunch, depart Odyssey Lodge by boat and head back to the mainland, where it's time to board our chartered flight across Cook Inlet to Nat Hab's own Alaska Bear Camp, where we spend the next two nights. The views from our private bush plane are stunning as we pass snow-clad volcanoes and glaciers winding down from vast icefields. The terrain below, where the Aleutian and Alaska ranges meet, comprises some of the world's most critical brown bear habitat. Look for bears in the meadows and along the shoreline as we come in for a landing, taxiing down the beach along Chinitna Bay.

Bear Camp is located on a historic homestead, a private inholding of coastal land surrounded by Lake Clark National Park and Preserve. These 4 million protected acres of wilderness are the ancestral homelands of the Dena'ina people, preserving an intact ecosystem at the headwaters of the largest sockeye salmon fishery in the world. Accessible only by plane or boat, Bear Camp offers an unparalleled immersion in pristine brown bear habitat. From our weatherproof tent cabins, we have immediate access to some of the best, most consistent bear viewing opportunities anywhere in Alaska, due to the season-long availability of food. In late spring, protein-rich sedge grass supports rapid growth, and bears are often seen browsing in the meadow behind camp, as well as digging clams from the beach. Accustomed to our non-threatening presence, they see us humans merely as part of the scenery, allowing us to move safely in their midst on guided outings, at times watching them from just a few yards away.

Day 10: Bear Viewing in Lake Clark National Park

There's simply no wildlife encounter to match being at close range among bears in their wild home. Against a backdrop of sheer-sided peaks rising above the green valley floor, the bears are sometimes near enough that we can hear them chewing their food and communicating with one another in woofs, purrs and growls. Alaska's mighty brown bears—the coastal version of the interior grizzly bear (which is the same species, *Ursus arctos*)—are the largest land predators in North America. Adult males can weigh up to 1,500 pounds!

While the bear activity we witness can vary according to seasonal and weather conditions, there's always something interesting going on. And while bears are usually plentiful right in the vicinity of camp, we also go into adjacent Lake Clark National Park for added variety. At every turn, we explore the area in the careful company of our seasoned bear naturalists who offer thorough coaching in respectful "bear etiquette." Our low-impact presence ensures that we never disturb the bears, and they in turn grant us comfortable access to watch them go about their daily routines.



Day 11: Bear Viewing / Private Flight to Homer

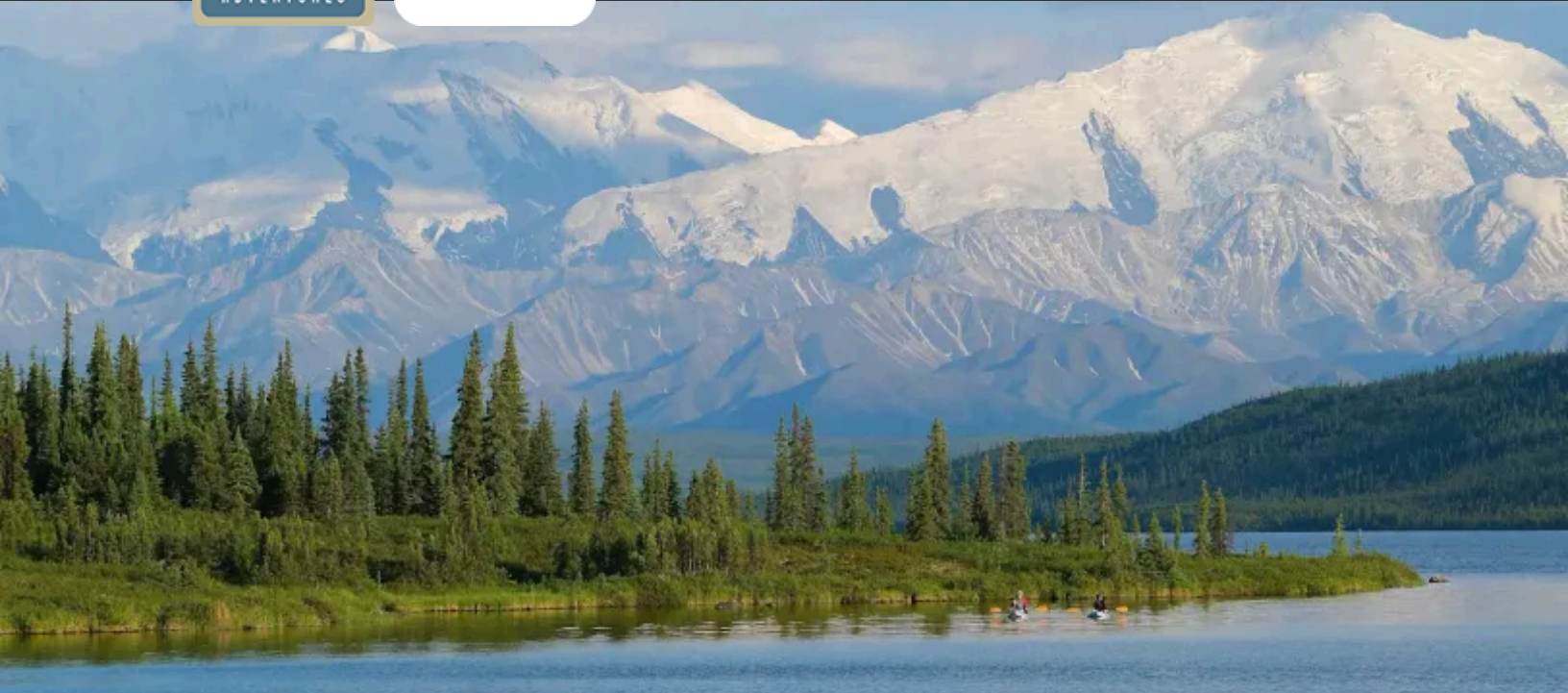
We have one last chance this morning to marvel at the bears, admiring their majesty and whimsy alike. Few travelers have such an encounter with the raw beauty and profound silence of a landscape this size—these things alone would make for a life-transforming experience. But the chance to watch Alaskan brown bears, incomparable icons of the wild, on their turf, their terms...it's a wonder to have bears welcome us into their world. We depart as ambassadors for the bears, our time among them leaving an indelible mark on us, inspiring us to do all we can to protect them. Leaving Bear Camp behind, we board our small bush plane to return to Homer, where we enjoy some free time browsing on the spit. The marina, a site of busy fishing boat traffic, offers some appealing photo opportunities. This evening, we celebrate our adventures at a festive farewell dinner.

Day 12: Homer / Depart

Our Alaska adventure comes to a close today as we transfer to the Homer airport for onward flights.



Discovering Our Planet Together



Itinerary At A Glance

- Day 1**
Fairbanks, Alaska
- Day 2**
Denali National Park—Chartered Helicopter to Backcountry Lodge
- Day 3**
Exploring the Remote Denali Wilderness
- Day 4**
Denali / Anchorage
- Day 5**
Alaska Railroad Dome Car to Seward / Private Fox Island—Kayaking
- Day 6**
Kenai Fjords National Park—Private Wildlife Cruise / Fox Island
- Day 7**
Fox Island / Seward / Homer / Odyssey Lodge

July & August Itinerary — Brooks Falls Itinerary

Go Farther into the Last Frontier on Our Small-Group Wildland Immersion

Day 1: Fairbanks, Alaska

Our grand Alaska nature adventure begins in Fairbanks, Alaska's "Golden Heart City." Capital of the vast Interior, Fairbanks retains its frontier flavor with pioneer saloons, paddlewheelers and outlying mining camps. Fairbanks is also home to the flagship campus of the University of Alaska system, where the famous Geophysical Institute is headquartered, leading research in the study of permafrost, earthquakes, sea ice and the aurora borealis. Meet your Expedition Leader at a welcome dinner this evening, who offers an orientation to all the adventures to come.





Itinerary At A Glance

Day 8

Kachemak Bay State Park—
Grewingk Glacier Hike

Day 9

Homer / Private Flight to King
Salmon

Day 10

King Salmon / Katmai National
Park—Bear Viewing on the Brooks
River

Day 11

Katmai Bear Viewing / King
Salmon / Homer

Day 12

Homer / Depart

Day 2: Denali National Park—Chartered Helicopter to Backcountry Lodge

This morning we drive south through boreal forest along the Nenana River to Denali National Park. At 6 million acres—larger than the state of Massachusetts—Denali is one of the world's great wilderness preserves. The park's namesake is the highest peak in North America, towering 20,310 feet over alpine tundra and taiga that provide habitat for abundant wildlife. The mountain's name—Denali—means "The High One" in the Athabascan language.

Due to an extended road closure in the interior of Denali National Park as a result of a major landslide in 2021, access to the remote backcountry at the end of the 92-mile-long park road is now possible only by air. At the park entrance, we board a chartered helicopter for a spectacular aerial journey to Denali Backcountry Lodge, isolated in a vast expanse of wilderness. Spending two nights here is an exclusive experience very few visitors to Alaska get, even before the road was closed – and it's an even rarer opportunity now. As we fly over the tangled veins of glacier-fed rivers, broad valleys and steep mountainsides, look for wildlife along the edge of the spruce forest and on the braided gravel river bars—we often see moose, caribou, Dall sheep, grizzlies and occasionally wolves, "Alaska's Big Five."

Day 3: Exploring the Remote Denali Wilderness

From our base at Denali Backcountry Lodge, a host of activities offers a chance to learn about the natural and cultural history of our environs, including the wildlife that thrives here, the Athabascan people who lived off this land for 10,000 years, and the pioneers who mined for gold in nearby Kantishna at the turn of the 20th century. Take a hike in search of wildlife with our Expedition Leader and lodge naturalist guides. Paddle a kayak on Wonder Lake, offering the iconic postcard shot of Denali's massive white hulk rising behind. Try your hand at fishing in Moose Creek. Ride a mountain bike. And just drink up the profound beauty and silence of wild country on a scale few people will experience in their lifetimes. At the end of our day of adventure, return to the lodge for a hearty dinner featuring fresh seasonal, regional fare spotlighted in every dish. Afterward, head to the campfire to roast marshmallows for s'mores.



Day 4: Denali / Anchorage

After lunch, depart our wilderness lodge and fly back to the park entrance via chartered helicopter. Weather permitting, we'll have stunning eye-level views of the icy flanks of Denali en route. We disembark and board a spacious mini-bus for our journey south to Anchorage across the Alaska Range. Our route climbs above tree line over Broad Pass, then descends through taiga forest to follow the Susitna River through thick stands of birch, balsam poplar, willow and spruce. Eventually, we reach Anchorage on Cook Inlet, backdropped by the glacier-crowned peaks of the Chugach Range. With a population of roughly 300,000, Anchorage is Alaska's largest city and its primary commerce and transportation hub.

Day 5: Alaska Railroad Dome Car to Seward / Private Fox Island—Kayaking

Today we wake early to travel the most scenic section of the historic Alaska Railroad, built in the early 20th century. The state-owned railroad's mainline is 470 miles long, connecting Seward in the south with Fairbanks up north. From the dome car, enjoy a classic train journey along Turnagain Arm as we look for beluga whales and keep an eye out for tidal bores that create waves big enough for local surfers to ride! To the north lie the ice-clad peaks and lush glacial valleys of the Chugach Range, harboring the northernmost temperate rain forest in North America. The corridor we follow winds through the Kenai Mountains–Turnagain Arm National Heritage Area, a designation that recognizes the area's unique cultural, geographic and historical features. Once we cross Moose Pass, the rail line drops back to the coast, ending at the fishing town, port and southern terminus of Seward on Resurrection Bay.

In Seward's small boat harbor, look for sea otters frequently seen bobbing among the yachts and docks. Here, we board a boat for the voyage to private Fox Island on the edge of Kenai Fjords National Park. Our isolated location, fronting a wild pebble beach backdropped by steep forested mountains, reveals the pristine side of Alaska most visitors miss. The Kenai Fjords region is famed for its sea kayaking, and an optional paddling excursion late this afternoon is likely to reveal some of the area's prolific marine life.

Day 6: Kenai Fjords National Park—Private Wildlife Cruise / Fox Island

Iconic images of Alaska are on display today from our private chartered boat as we explore a marine realm where vestiges of the Ice Age linger. Our small vessel allows us to approach wildlife at close range, and Kenai Fjords National Park provides excellent opportunities for viewing humpback whales, orcas, Dall's porpoise, sea lions, sea otters and bobbing puffins. Weave among islands and rocky cliffs where seabirds nest, and look for bald eagles in the treetops above. Jagged glaciers wind from the mountain heights to the sea, and we may observe icebergs calving with a thunderous crash from a glacier's towering blue face. Following our all-day outing, our boat returns us to our secluded lodge on Fox Island for another night of peace and solitude in the coastal wilderness.



Day 7: Fox Island / Seward / Homer / Odyssey Lodge

After a last morning on serene Fox Island, board our private boat for the return journey up Resurrection Bay to Seward, where you'll have some free time to chance to wander around this historic harbor town. From Seward, head south on a spectacular drive to Homer. The mountain ranges of the Kenai Peninsula rise one after another, sourcing some of Alaska's richest salmon rivers. Homer is known as "the End of the Road" in Alaska, and we follow it all the way down to the harbor on the Homer Spit. Homer is renowned as the Halibut Fishing Capital of the World, and we may see fishermen unloading their catch—the biggest halibut can be eight feet long and up to 500 pounds! While halibut are one of Alaska's most valuable fisheries, Homer also offers excellent fishing for several salmon species, lingcod and rockfish. At the marina, board a private boat transfer to Odyssey Lodge, a secluded wilderness retreat on China Poot Bay, where we spend the next two nights in exceptional privacy.

Day 8: Kachemak Bay State Park—Grewingk Glacier Hike

Set out this morning for all-day hiking adventure in Kachemak Bay State Park. Depart from the beach in front of our lodge on a 20-minute water taxi ride through the island-studded marine realm that's home not only to coveted sport fish but also sea otters, seals, porpoises, sea lions, orcas, whales, bald eagles and puffins. We disembark at the trailhead to Grewingk Glacier, a 13-mile-long river of ice that winds down from the Kenai Mountains. The glacier was named in 1880 by famed naturalist William Healey Dall, for Constantin Grewingk, who published a study in German on the geology and volcanism of Alaska. The trail climbs gently but steadily upward through a forest of cottonwoods and Sitka spruce to emerge above tree line onto the alluvial flats marking the glacier's former advance. Eventually, we reach the pristine meltwater lake in front of the glacier, viewing its jagged hulk in the distance. Icebergs float on the surface, and we may get to see more of them calve from the glacier's face. Once we return to our lodge, there's time to relax on the deck overlooking the bay before another gourmet dinner featuring fresh Alaskan seafood.

Day 9: Homer / Private Flight to King Salmon

Is it possible to say we've saved the best for last? Well, it all depends on how you weigh the wonders of Alaska, but our bear adventures begin today and will surely be a highlight of your trip. After lunch, depart Odyssey Lodge by boat and head back to the mainland where it's time to board a chartered flight from Homer across Cook Inlet to King Salmon at the head of the Alaska Peninsula, then transfer to our classic Alaskan lodge on the Naknek River. This cozy wood-beamed lodge offers a comfortable base for wilderness bear viewing in nearby Katmai National Park. Once we get settled into our cabins, reconvene for a presentation by our Expedition Leader on bear biology and behavior, to prepare us for the adventures ahead tomorrow. This evening, enjoy a fine dinner featuring wild Alaskan salmon in the lodge dining room.



Day 10: King Salmon / Katmai National Park—Bear Viewing on the Brooks River

After a hearty breakfast, depart early for the nearby floatplane base where we board our short flight to Katmai National Park with access to world-renowned Brooks Falls, one of the best places to view brown bears in their natural habitat. Katmai is home to the world's largest population of these enormous omnivores, with some 2,200 individuals inside the park. As many bear populations around the world decline, Katmai's 4 million acres of wilderness provides some of the last pristine habitat to sustain them.

Within Katmai's protected bounds, bears live largely undisturbed, and visitors have unparalleled photography opportunities. From the safety of platforms built over world-famous Brooks Falls, we get a close angle on one of the world's most iconic wildlife spectacles: bears standing in the rushing whitewater, jaws gaping, trying to catch the salmon that leap up the falls once spawning season starts. July departures offer a good chance to see fishing bears, since this is when the salmon are running, but viewing is excellent in August and September, too, with even more (and fatter!) bears in the vicinity, wandering up and down the Brooks River. Each day, we break for lunch at Brooks Lodge, an easy walk from the falls. In the evenings, shuttle back to King Salmon by floatplane or water taxi to spend the night enjoying "rustic luxury" at our riverfront Lodge.

Day 11: Katmai Bear Viewing / King Salmon / Homer

After another day of bear viewing around Brooks Falls, we fly once more to King Salmon, then back to Homer in the early evening. Tonight we celebrate our adventures at a festive farewell dinner hosted by our Expedition Leader.

Day 12: Homer / Depart

Our grand Alaska wildlife safari comes to a close today as we transfer to the Homer airport for homeward flights, or ongoing travel for those who have booked extensions.



Discovering Our Planet Together



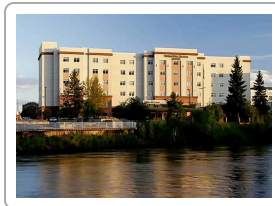
Accommodation Details:

- Springhill Suites Fairbanks
- Denali Backcountry Lodge
- The Wildbirch Hotel
- Kenai Fjords Wilderness Lodge
- Nat Hab's Alaska Bear Camp
- Odyssey Lodge
- King Salmon Lodge

For detailed descriptions, visit nathab.com/alaska-northern-adventures/alaska-wildlife-safari/accommodations

Ultimate Alaska Wildlife Safari Accommodations

Go Farther into the Last Frontier on Our Small-Group Wildland Immersion



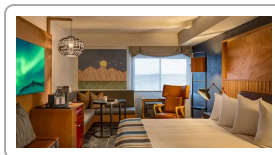
Springhill Suites Fairbanks

Located on the banks of the Chena River in downtown Fairbanks, the hotel features large studio-suite rooms and a host of amenities including a fitness center, heated indoor pool and whirlpool spa.



Denali Backcountry Lodge

Denali Backcountry Lodge, currently accessible only by helicopter, enjoys a wilderness setting 90 miles from the national park entrance, with private cedar cabins along Moose Creek.



The Wildbirch Hotel

Newly redesigned and located in downtown Anchorage, this hotel features spacious guest rooms, a welcoming lobby with local art and large fireplace, and an on-site craft brewery.

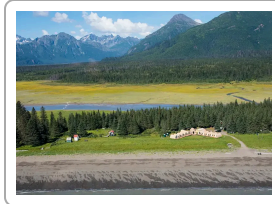


Discovering Our Planet Together



Kenai Fjords Wilderness Lodge

Accessed via a scenic boat ride from Seward on Resurrection Bay, this remote outpost on private Fox Island offers total tranquility in eight waterfront log cabins surrounded by Kenai Fjords National Park.



Nat Hab's Alaska Bear Camp

Nat Hab's fly-in camp, on a private inholding in Lake Clark National Park, is a sustainable base for exploring pristine brown bear habitat, providing remote wilderness accommodations that are low on impact yet high on comfort.



Odyssey Lodge

This contemporary luxury retreat on Kachemak Bay, accessible only via boat from Homer, features bay view cabins and treehouse suites with expansive water and mountain views.



King Salmon Lodge

This wilderness lodge offers rustic luxury on the Naknek River, with log and stone accents, a cozy fireplace and Alaskan meals—just a short floatplane ride to world-famous bear viewing in Katmai National Park.



Want to See the Real Alaska? Choose Nat Hab

No state is as vast, stunning and wild as Alaska. While most companies claim they show you Alaska, the truth is that 99% of visitors end up in the same crowded complex of bland hotels, big buses and massive cruise ships, missing the genuine wilderness and wildlife spectacles that make the 49th State the true Last Frontier. That's why we've crafted a different approach to Alaska, away from overdone conventional routes, enhanced with insider knowledge of Alaska's unique places, majestic wildlife and scenic wonders. The result? You'll get an immersive Alaska nature adventure that's heads above the rest.

1 A Small Group for a Richer Nature Experience

With a maximum of 14 travelers, you'll enjoy plenty of room on our vehicles, personalized attention from your Expedition Leader, and, most importantly, quieter and more immersive nature experiences you can't get as part of a large bus tour or aboard a huge cruise ship with thousands of other passengers.

2 The Optimal Alaska Wildlife Itinerary

Our itinerary offers the best chances to see Alaska's famous wildlife, from the brown bears of Lake Clark National Park and Brooks Falls—famous for its leaping salmon—to the marine life of Kenai Fjords. We've enhanced it annually for more than 30 years to create a flagship Alaska adventure in which we take great pride.

3 Cover More Terrain Via More Transportation Modes

Alaska is so big that locals like to tease Texans about cutting Alaska in half to make Texas the third-largest state! Point being, there's a lot to explore here, and a lot of ground to cover. We show you only a portion of the 49th State's 365 million acres—but it's a grand and diverse portion, covering more than 2,000 linear miles via bush plane, floatplane, helicopter, train, boat and mini bus.

4 Private Helicopter Flight to the Denali Backcountry

Board a chartered helicopter and fly 90 miles to Denali Backcountry Lodge, deep inside the national park and currently inaccessible by road—with exhilarating views of the mountain and, hopefully, wildlife below. Due to a massive landslide, the park road is closed until at least 2026, and very few visitors will have the chance to see much beyond the park entrance. But you will!



5

Cruise Kenai Fjords Aboard Our Private Chartered Boat

View glaciers, icebergs, whales, seals, sea lions, otters and abundant birdlife in Kenai Fjords National Park aboard our private chartered boat, rather than from the crowded deck of an excursion boat or a cruise ship carrying thousands.

6

Stay on a Private Island in Kenai Fjords

Overnight at a secluded beachfront lodge on private Fox Island in Kenai Fjords, for a rare experience of genuine solitude in the Alaskan wilderness.

7

See Brown Bears Up Close on Alaska's Bear Coast

Very few Alaska tour itineraries include bear viewing on the Alaska Peninsula, home to North America's densest brown bear population. Depending on the time you travel, you'll spend unhurried time with the bears where seasonal conditions assure the best viewing. June departures spend two nights at Nat Hab's Alaska Bear Camp on a private inholding in Lake Clark National Park with abundant bears on view directly from camp. July and August departures visit Katmai National Park to view brown bears fishing at world-famous Brooks Falls. From our base at King Salmon Lodge, we make daily float plane excursions to the Brooks River and Falls area. You'll never get bear experiences like these from a cruise ship or tour bus!

8

The World's Finest Naturalist Guides

Natural Habitat Adventures is renowned for employing the finest naturalist guides on the planet, and our Alaska Expedition Leaders receive additional training and resources from WWF scientists. Expedition Leaders remain with our private groups throughout the entire itinerary. They are not "ship lecturers" or lodge-based guides who see different travelers every day. Rather, they are the Alaska's most qualified, dedicated and passionate natural history guides, regaling our guests with their insights and expertise while ensuring your safety and comfort. **See Expedition Leader bios** and traveler comments regarding the quality of our leaders.

9

Our Quality-Value Guarantee Ensures Your Superior Alaska Experience

With Natural Habitat Adventures, you receive our exclusive guarantee, which clearly states that we will meet the lofty expectations we set in our promotional materials. To our knowledge, this is the most ambitious guarantee made by any adventure travel company.

10

Feel Good About Your Carbon-Neutral Journey

We care deeply about our planet, as we know you do. When you travel with us, the carbon emissions from your trip are 100% offset—including your round-trip flights from home. Natural Habitat Adventures has been the world's first carbon-neutral travel company since 2007.



11

Nat Hab is WWF's Travel Partner

Because of our commitment to environmentally friendly travel, as well as the exceptional quality of our adventures, World Wildlife Fund—the world's leading environmental conservation organization—has named Natural Habitat Adventures as its worldwide travel partner, a designation that makes us exceedingly proud!



Make It Private with Your Family or Friends

Travel privately, exclusively with your immediate family, multi-generational family or group of friends. And when you choose a private departure, you're assured the most exclusive and authentic Alaska Wildlife Safari on offer. Request your private departure by completing the form below.

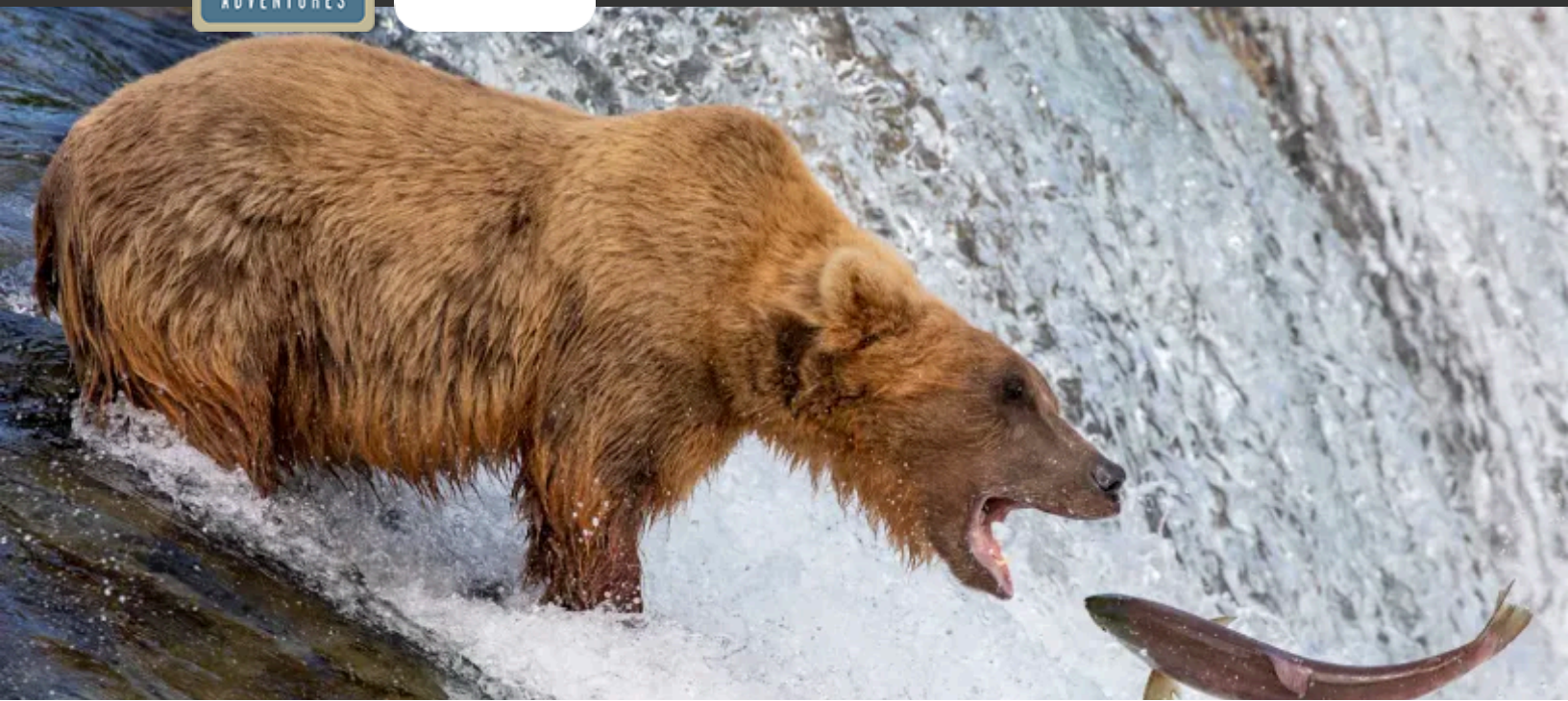
Please note that on Ultimate Alaska Make It Private departures we require a minimum group size of 7 travelers.

Also, please be aware that your per-person cost on a Make It Private trip will vary depending on the number of travelers in your group and may be as much as 10%-30% higher (ship-based trips may be even higher) than our normal trip cost unless you fill the trip.

This **Make It Private** option is available on nearly every Nat Hab trip for family and friend groups. Call an Adventure Specialist at 800-543-8917 or look for the "Make It Private" icon in the **pricing section** of a trip online at nathab.com to see prices based on your specific group size.



Discovering Our Planet Together



Dates & Pricing Summary:

Prices: From \$17795 (+Air)

Group Size: Limited to 14 Travelers

Physical Requirements: Moderate

Ultimate Alaska Wildlife Safari Dates, Pricing & Info

Go Farther into the Last Frontier on Our Small-Group Wildland Immersion

2025 Departures

Departure	Return	Notes
Jul 2, 2025	Jul 13, 2025	Brooks Falls departure Pair with our Alaska Bear Camp trip
Jul 4, 2025	Jul 15, 2025	Brooks Falls departure Pair with our Alaska Bear Camp trip
Jul 6, 2025	Jul 17, 2025	Brooks Falls departure Pair with our Alaska Bear Camp trip
Jul 8, 2025	Jul 19, 2025	Brooks Falls departure Pair with our Alaska Bear Camp trip
Jul 10, 2025	Jul 21, 2025	Brooks Falls departure Pair with our Alaska Bear Camp trip
Jul 12, 2025	Jul 23, 2025	Brooks Falls departure Pair with our Alaska Bear Camp trip
Jul 14, 2025	Jul 25, 2025	Brooks Falls departure Pair with our Alaska Bear Camp trip
Jul 16, 2025	Jul 27, 2025	Brooks Falls departure Pair with our Alaska Bear Camp trip
Jul 18, 2025	Jul 29, 2025	Brooks Falls departure Pair with our Alaska Bear Camp trip
Aug 24, 2025	Sep 4, 2025	Brooks Falls departure Pair with our Alaska Bear Camp trip



Dates & Pricing Summary:

Prices:
From \$17795 (+Air)

Group Size:
Limited to 14 Travelers

Physical Requirements:
Moderate

Departure	Return	Notes
Aug 26, 2025	Sep 6, 2025	Brooks Falls departure Pair with our Alaska Bear Camp trip
Aug 28, 2025	Sep 8, 2025	Brooks Falls departure Pair with our Alaska Bear Camp trip
Aug 30, 2025	Sep 10, 2025	Brooks Falls departure Pair with our Alaska Bear Camp trip

2026 Departures

Departure	Return	Notes
Jul 2, 2026	Jul 13, 2026	Brooks Falls departure Pair with our Alaska Bear Camp trip
Jul 4, 2026	Jul 15, 2026	Brooks Falls departure Pair with our Alaska Bear Camp trip
Jul 6, 2026	Jul 17, 2026	Brooks Falls departure Pair with our Alaska Bear Camp trip
Jul 8, 2026	Jul 19, 2026	Brooks Falls departure Pair with our Alaska Bear Camp trip
Jul 12, 2026	Jul 23, 2026	Brooks Falls departure Pair with our Alaska Bear Camp trip
Jul 14, 2026	Jul 25, 2026	Brooks Falls departure Pair with our Alaska Bear Camp trip
Jul 16, 2026	Jul 27, 2026	Brooks Falls departure Pair with our Alaska Bear Camp trip
Jul 18, 2026	Jul 29, 2026	Brooks Falls departure Pair with our Alaska Bear Camp trip
Jul 20, 2026	Jul 31, 2026	Brooks Falls departure Pair with our Alaska Bear Camp trip
Jul 22, 2026	Aug 2, 2026	Brooks Falls departure Pair with our Alaska Bear Camp trip
Jul 26, 2026	Aug 6, 2026	Brooks Falls departure Pair with our Alaska Bear Camp trip
Aug 21, 2026	Sep 1, 2026	Brooks Falls departure Pair with our Alaska Bear Camp trip
Aug 23, 2026	Sep 3, 2026	Brooks Falls departure Pair with our Alaska Bear Camp trip
Aug 25, 2026	Sep 5, 2026	Brooks Falls departure Pair with our Alaska Bear Camp trip
Aug 27, 2026	Sep 7, 2026	Brooks Falls departure Pair with our Alaska Bear Camp trip



Pricing

2025 Prices

Trip Price

\$17795 to \$18995 (+internal air)



June Departures Internal Air Fee: \$2184 per person (listed separately on our invoicing).

- Healy to Denali Backcountry Lodge: Helicopter
- Denali Backcountry Lodge to Healy: Helicopter
- Homer to Bear Camp: Bush plane
- Bear Camp to Homer: Bush plane

July & August Internal Air Fee: \$2984 per person (listed separately on our invoicing).

- Healy to Denali Backcountry Lodge: Helicopter
- Denali Backcountry Lodge to Healy: Helicopter
- Homer to King Salmon: Jet
- King Salmon to Brooks Falls: Float plane
- Brooks Falls to King Salmon: Float plane
- King Salmon- to Brooks Falls: Float plane
- Brooks Falls to King Salmon: Float plane
- King Salmon to Homer: Jet

Single Occupancy: For a single room add \$3895. **Click here** to learn how you can avoid the single supplement.

Deposit: \$500 per person (non-refundable)

For private customized trips for your family, check out our partners at **Off the Beaten Path!**

Trip prices are per person based on double occupancy and are given in U.S. dollars.

Please read our Payment & Refund Policy here.

2026 Prices

We're still in the process of confirming 2026 pricing. Please contact an Adventure Specialist for more details: 800-543-8917.

Included

- **Trip price includes:** Accommodations, services of Nat Hab's professional Expedition Leader(s), local guides and lodge staff, all meals from dinner on Day 1 through breakfast on the final day, dome car train from Anchorage to Seward, private full-day boat charter in Kenai Fjords National Park, some gratuities, airport transfers on Day 1 and the final day, all activities and entrance fees, all taxes, permits and service fees. For Bear Camp departures, access to rain jackets, rubber boots, mosquito nets, Swarovski binoculars, scopes and tripods while at Camp.
- **Internal air cost includes:** Helicopter flights to and from the backcountry of Denali National Park as well as chartered flights between Homer and King Salmon or Homer and Bear Camp (this will be listed separately on our invoicing).



Not Included

Travel to and from the start and end point of your trip, alcoholic beverages, some gratuities, passport and visa fees (if any), optional activities, items of a personal nature (phone calls, laundry and internet, etc.), airline baggage fees, airport and departure taxes (if any), required medical evacuation insurance, optional travel protection insurance.

Physical Requirements

Moderate

The activities on our Alaska wildlife adventure are diverse, requiring general mobility and fitness. All travelers must be in good health and able to navigate uneven terrain without assistance. While our longest walk is about two miles (one way), most walks and hikes are off-trail and sometimes uphill, requiring strong mobility and stability.

Travelers also have the opportunity to participate in optional kayaking on Fox Island, weather permitting. Though no prior kayaking experience is required, general fitness and mobility, including the ability to get into and out of a kayak, are essential. Finally, travelers should have the agility to climb in and out of float planes or bush planes with limited assistance. We stress that travelers are not required to participate in every activity, but transportation options on this trip require that all participants be generally physically fit.

On this adventure, our ability to accommodate varying levels of physical abilities or interests is at times limited, as these trips are generally guided by a single Expedition Leader. On some portions of the itinerary, however, Expedition Leaders may be assisted by a local guide who can provide additional flexibility within the group.

On private departures with smaller groups, our ability to accommodate varying levels of physical abilities or interests is limited, since these trips are staffed with a single Expedition Leader who may be assisted, pending availability, by local guides.

Important Information About This Trip

This trip ventures far afield from the typical Alaska tour circuit where large motorcoaches move long lines of cruise clients to crowded destinations. A couple of details you should be aware of: Power is available at Denali Backcountry Lodge, Kenai Fjords Wilderness Lodge on Fox Island, and at Bear Camp or King Salmon Lodge.

A prime focus of our Alaska adventure is bears, which, naturally, should be treated with caution. At Brooks Falls, thousands of visitors have traveled here to view bears over the past 50+ years and, to our knowledge, there has never been a bear attack. But we never know exactly what bears are thinking, so we ask our travelers to consider this and pay close attention to the rules set forth by the park rangers.

Mandatory Insurance

Since the areas we travel to are remote and wild (that's why we go there!), we require that all guests have, at minimum, medical evacuation insurance for this program. This is for the safety of all guests. We require that your chosen independent insurance plan includes at least \$250,000 in medical evacuation coverage.

To protect your investment and to provide peace of mind while you travel, we also strongly recommend purchasing comprehensive travel insurance. Plans may cover everything from medical treatment to trip cancellations and delays and lost luggage. Please contact our office if you would like more information about the medical evacuation and comprehensive travel insurance policies we offer by calling 800-543-8917.



Getting There & Getting Home

This adventure begins in Fairbanks and ends in Homer. Please book your flights so that you can arrive in Fairbanks by 4 pm on Day 1 of the program in order to attend an orientation and welcome dinner at 5:30 pm. You are free to depart Homer any time on the final day.



Discovering Our Planet Together



Extension Details:

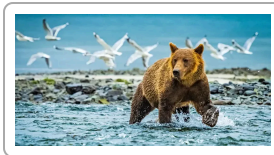
Nat Hab's Alaska Bear Camp
\$6995

Alaska's Grizzly Ship: Kodiak to Katmai
\$10995

Alaska's Inside Passage
\$6604

Ultimate Alaska Wildlife Safari Extensions

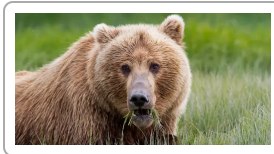
Go Farther into the Last Frontier on Our Small-Group Wildland Immersion



Nat Hab's Alaska Bear Camp

A secluded immersion with brown bears in the wilderness of Lake Clark National Park—enjoy total privacy and comfort at our deluxe fly-in wilderness camp accessed via chartered bush plane from Homer.

\$6995 (+air)



Alaska's Grizzly Ship: Kodiak to Katmai

An exclusive small-ship adventure to view giant brown bears—the world's largest "coastal grizzlies"—up close! Walk the shores as bears dig for clams, forage for sedges and pursue salmon in season in tidal streams.

\$10995 (+air)



Alaska's Inside Passage

A small-ship voyage through the narrow channels and fjords of Southeast Alaska's storied Inside Passage—meet wildlife up close in the company of top naturalists.

\$6604



Natural Habitat & WWF: Discovering Our Planet Together

Natural Habitat Adventures • PO Box 3065 • Boulder, CO USA 80307

USA & Canada: 800-543-8917 • International: 303-449-3711

© 2025 Natural Habitat Adventures

WWF's membership travel program is operated by Natural Habitat Adventures (Nat Hab). To date, Nat Hab has provided more than \$6 million in support of WWF's mission and will continue to give 1% of gross sales plus \$175,000 annually through 2028. WWF® and ©1986 Panda Symbol are owned by WWF. All rights reserved.